

HIGH FOREST

APARTMENTS

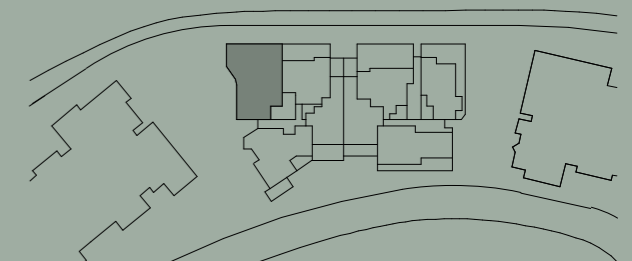
Apartment No. 222 Building BLUEGUM Lot No. 06

Colour Scheme
SUMMER

2 BEDROOM + STUDY APARTMENT

Internal Area 98 m²
Balcony Area 89 m²
Total Area 187 m²

Areas subject to change in accordance with the provisions of the contract. Area includes balcony and/or terrace where applicable. It excludes associated parking and external storage areas.

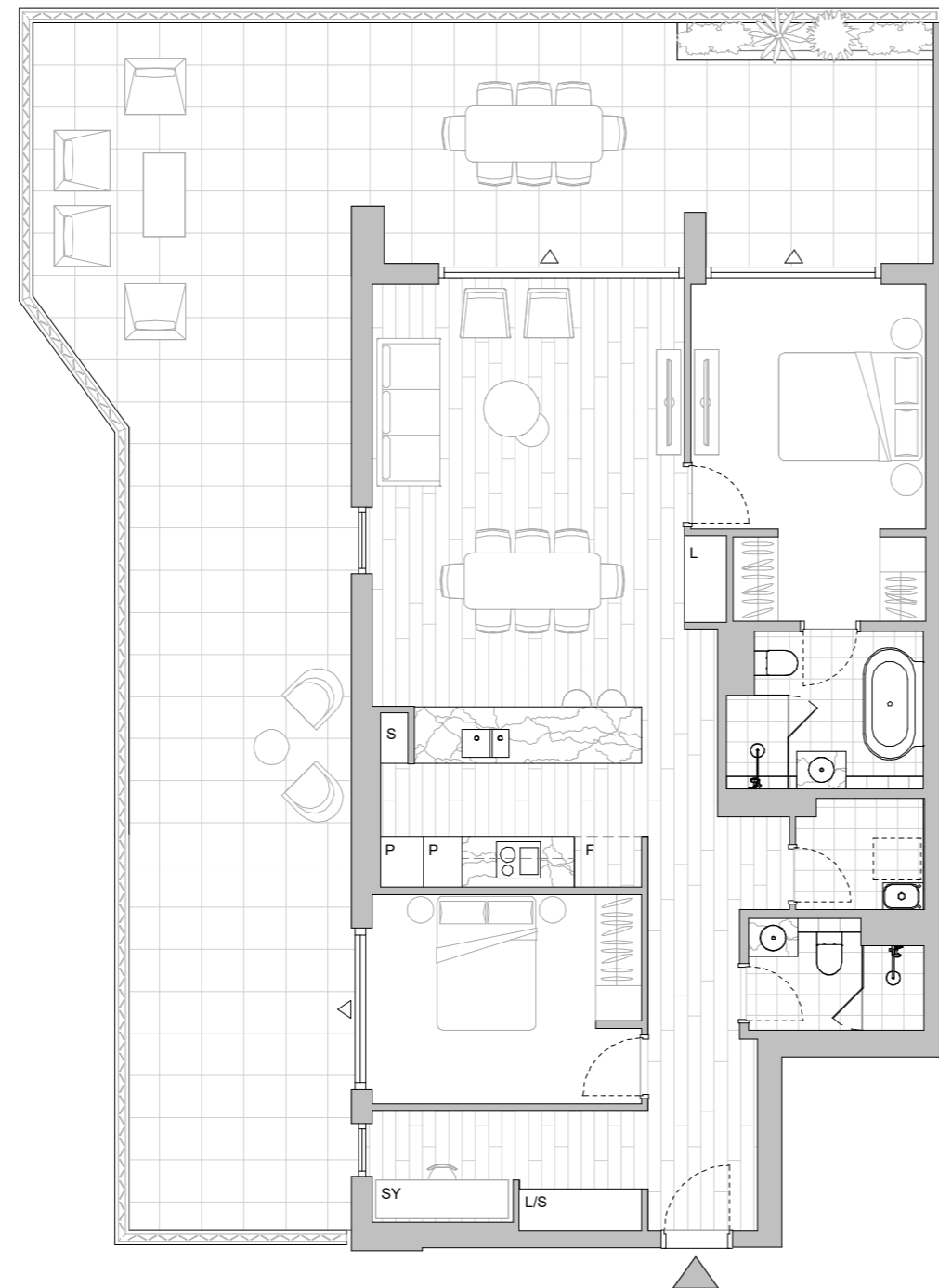


LEGEND - As Applicable

▲ Access	△ Balcony Access	** Vertical Screen
F Fridge Space	IF Integrated Fridge	SL Skylight
P Pantry	S Storage	SY Study
O Oven Stack	L Linen	
M Media	K King Bed	



This floor plan was produced prior to construction and while the information contained herein is believed to be correct it is not guaranteed. Changes will undoubtedly be made in accordance with the contract for sale. The plan does not show additional features such as hot water systems, services or bulkheads necessary for services. Dimensions, areas and scale of floor plans are approximate only. Dimensions are measured, and areas are calculated, in accordance with the Australian Property Institute Method of Measurement effective at the date of preparation of the Floor Plan. The furniture and furnishings depicted are not included with any sale. Purchasers must refer to the contract for sale for the list of inclusions. Furnishings should not be taken to indicate the final position of power points, TV connection points and the like. Bed sizes shown are indicative only and not guaranteed. All graphics, including design and extent of tile/paver/carpet areas, landscaping, balustrades, louvres, sun shading, fencing, privacy screens, services equipment and wintergardens are for illustrative purposes only and are not to be relied on as a representative of the final product. All level changes in the courtyards may not be shown.



LEVEL 2

HIGH FOREST

APARTMENTS

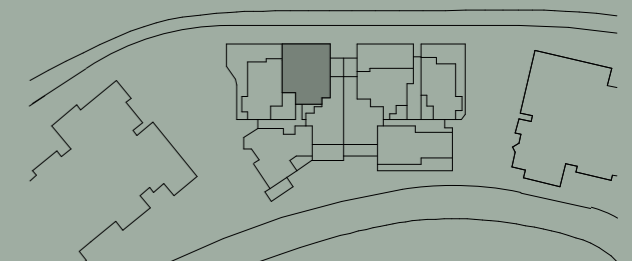
Apartment No. 223 Building BLUEGUM Lot No. 07

Colour Scheme
AUTUMN

2 BEDROOM APARTMENT

Internal Area 82 m²
Balcony Area 38 m²
Total Area 120 m²

Areas subject to change in accordance with the provisions of the contract. Area includes balcony and/or terrace where applicable. It excludes associated parking and external storage areas.

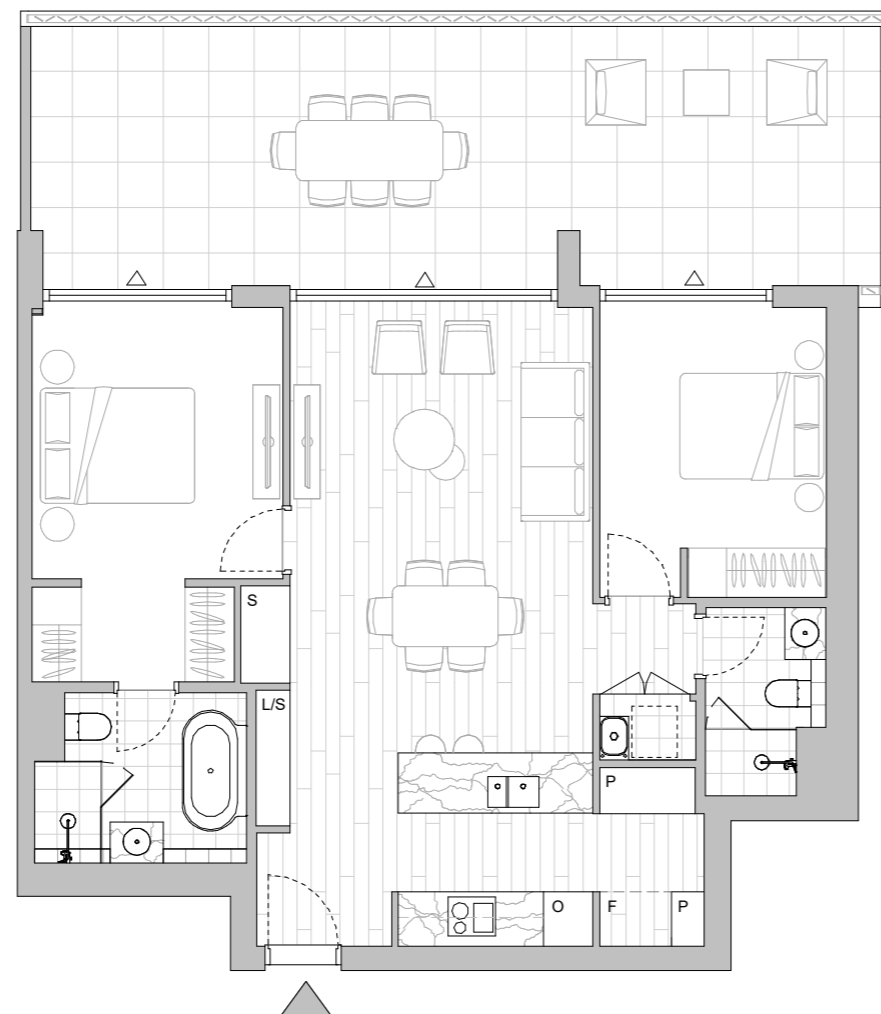


LEGEND - As Applicable

- | | | |
|----------------|----------------------|--------------------|
| ▲ Access | △ Balcony Access | ** Vertical Screen |
| F Fridge Space | IF Integrated Fridge | SL Skylight |
| P Pantry | S Storage | SY Study |
| O Oven Stack | L Linen | |
| M Media | K King Bed | |



This floor plan was produced prior to construction and while the information contained herein is believed to be correct it is not guaranteed. Changes will undoubtedly be made in accordance with the contract for sale. The plan does not show additional features such as hot water systems, services or bulkheads necessary for services. Dimensions, areas and scale of floor plans are approximate only. Dimensions are measured, and areas are calculated, in accordance with the Australian Property Institute Method of Measurement effective at the date of preparation of the Floor Plan. The furniture and furnishings depicted are not included with any sale. Purchasers must refer to the contract for sale for the list of inclusions. Furnishings should not be taken to indicate the final position of power points, TV connection points and the like. Bed sizes shown are indicative only and not guaranteed. All graphics, including design and extent of tile/paver/carpet areas, landscaping, balustrades, louvres, sun shading, fencing, privacy screens, services equipment and wintergardens are for illustrative purposes only and are not to be relied on as a representative of the final product. All level changes in the courtyards may not be shown.



LEVEL 2

HIGHFOREST

APARTMENTS

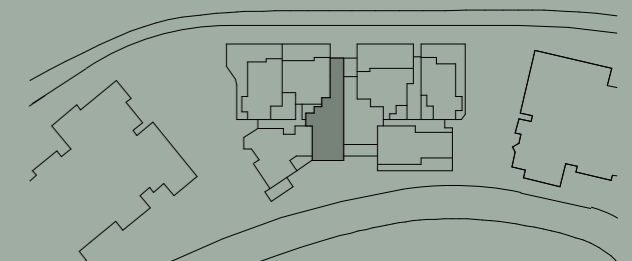
Apartment No. 224 Building BLUEGUM Lot No. 08

Colour Scheme
SUMMER - Kitchen
AUTUMN - Bathroom

2 BEDROOM APARTMENT

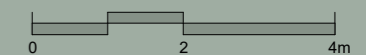
Internal Area 102 m²
Balcony Area 20 m²
Total Area 122 m²

Areas subject to change in accordance with the provisions of the contract. Area includes balcony and/or terrace where applicable. It excludes associated parking and external storage areas.

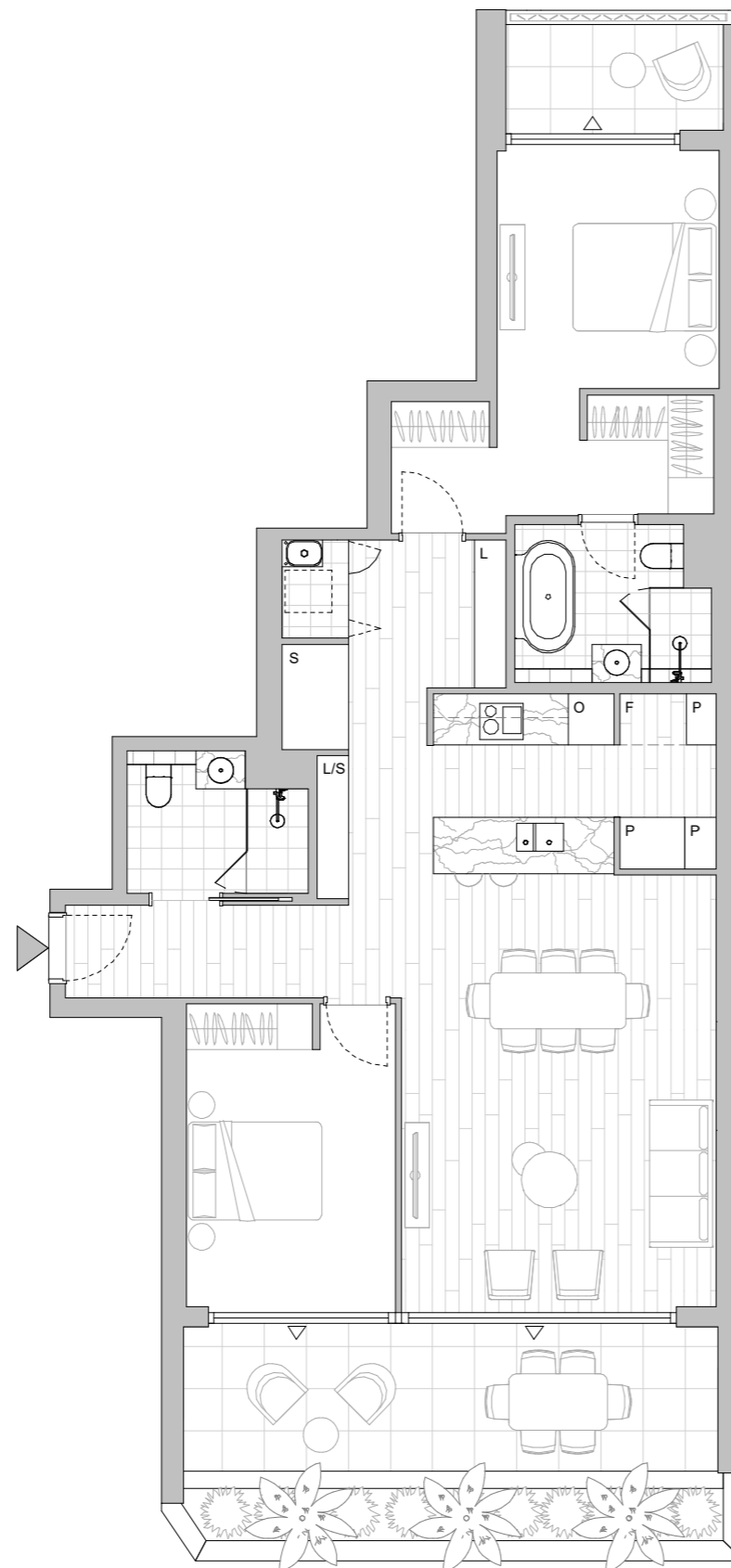


LEGEND - As Applicable

- | | | |
|----------------|----------------------|--------------------|
| ▲ Access | △ Balcony Access | ** Vertical Screen |
| F Fridge Space | IF Integrated Fridge | SL Skylight |
| P Pantry | S Storage | SY Study |
| O Oven Stack | L Linen | |
| M Media | K King Bed | |



This floor plan was produced prior to construction and while the information contained herein is believed to be correct it is not guaranteed. Changes will undoubtedly be made in accordance with the contract for sale. The plan does not show additional features such as hot water systems, services or bulkheads necessary for services. Dimensions, areas and scale of floor plans are approximate only. Dimensions are measured, and areas are calculated, in accordance with the Australian Property Institute Method of Measurement effective at the date of preparation of the Floor Plan. The furniture and furnishings depicted are not included with any sale. Purchasers must refer to the contract for sale for the list of inclusions. Furnishings should not be taken to indicate the final position of power points, TV connection points and the like. Bed sizes shown are indicative only and not guaranteed. All graphics, including design and extent of tile/paver/carpet areas, landscaping, balustrades, louvres, sun shading, fencing, privacy screens, services equipment and wintergardens are for illustrative purposes only and are not to be relied on as a representative of the final product. All level changes in the courtyards may not be shown.



LEVEL 2

HIGHFOREST

APARTMENTS

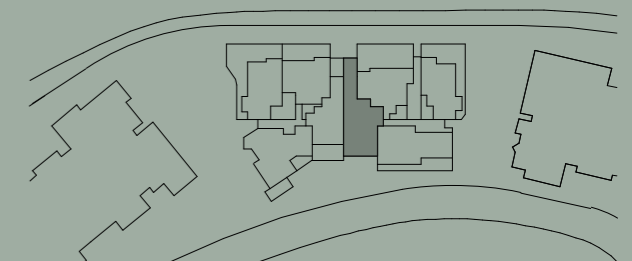
Apartment No. 226 Building BLUEGUM Lot No. 10

Colour Scheme
AUTUMN

2 BEDROOM + MEDIA APARTMENT

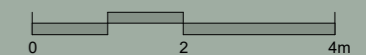
Internal Area 96 m²
Balcony Area 20 m²
Total Area 116 m²

Areas subject to change in accordance with the provisions of the contract. Area includes balcony and/or terrace where applicable. It excludes associated parking and external storage areas.

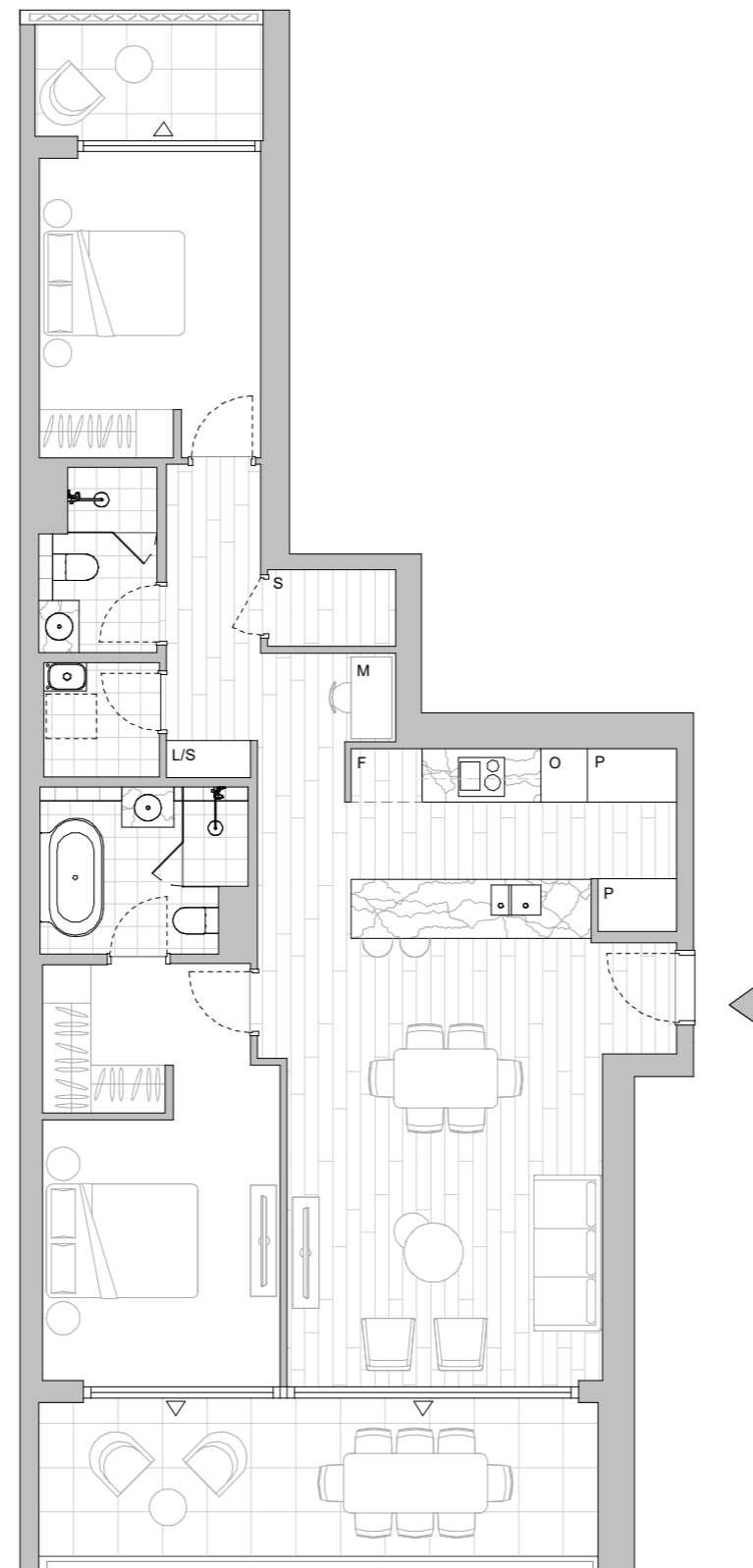


LEGEND - As Applicable

Access	Balcony Access	** Vertical Screen
F Fridge Space	IF Integrated Fridge	SL Skylight
P Pantry	S Storage	SY Study
O Oven Stack	L Linen	
M Media	K King Bed	



This floor plan was produced prior to construction and while the information contained herein is believed to be correct it is not guaranteed. Changes will undoubtedly be made in accordance with the contract for sale. The plan does not show additional features such as hot water systems, services or bulkheads necessary for services. Dimensions, areas and scale of floor plans are approximate only. Dimensions are measured, and areas are calculated, in accordance with the Australian Property Institute Method of Measurement effective at the date of preparation of the Floor Plan. The furniture and furnishings depicted are not included with any sale. Purchasers must refer to the contract for sale for the list of inclusions. Furnishings should not be taken to indicate the final position of power points, TV connection points and the like. Bed sizes shown are indicative only and not guaranteed. All graphics, including design and extent of tile/paver/carpet areas, landscaping, balustrades, louvres, sun shading, fencing, privacy screens, services equipment and wintergardens are for illustrative purposes only and are not to be relied on as a representative of the final product. All level changes in the courtyards may not be shown.



LEVEL 2

HIGHFOREST

APARTMENTS

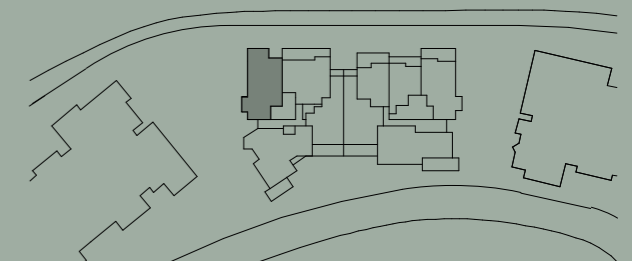
Apartment No. 322 Building BLUEGUM Lot No. 14

Colour Scheme
AUTUMN

2 BEDROOM + STUDY APARTMENT

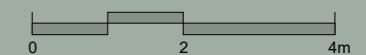
Internal Area 98 m²
Balcony Area 10 m²
Total Area 108 m²

Areas subject to change in accordance with the provisions of the contract. Area includes balcony and/or terrace where applicable. It excludes associated parking and external storage areas.

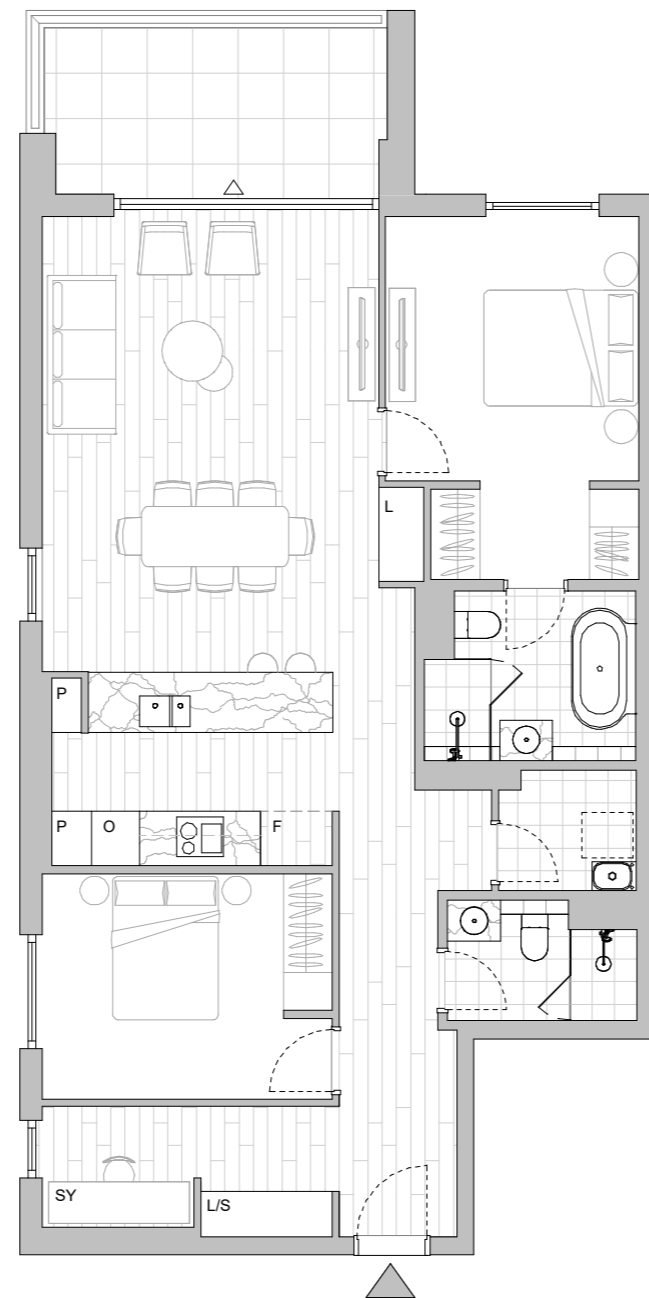


LEGEND - As Applicable

▲ Access	△ Balcony Access	** Vertical Screen
F Fridge Space	IF Integrated Fridge	SL Skylight
P Pantry	S Storage	SY Study
O Oven Stack	L Linen	
M Media	K King Bed	



This floor plan was produced prior to construction and while the information contained herein is believed to be correct it is not guaranteed. Changes will undoubtedly be made in accordance with the contract for sale. The plan does not show additional features such as hot water systems, services or bulkheads necessary for services. Dimensions, areas and scale of floor plans are approximate only. Dimensions are measured, and areas are calculated, in accordance with the Australian Property Institute Method of Measurement effective at the date of preparation of the Floor Plan. The furniture and furnishings depicted are not included with any sale. Purchasers must refer to the contract for sale for the list of inclusions. Furnishings should not be taken to indicate the final position of power points, TV connection points and the like. Bed sizes shown are indicative only and not guaranteed. All graphics, including design and extent of tile/paver/carpet areas, landscaping, balustrades, louvres, sun shading, fencing, privacy screens, services equipment and wintergardens are for illustrative purposes only and are not to be relied on as a representative of the final product. All level changes in the courtyards may not be shown.



LEVEL 3

HIGH FOREST

APARTMENTS

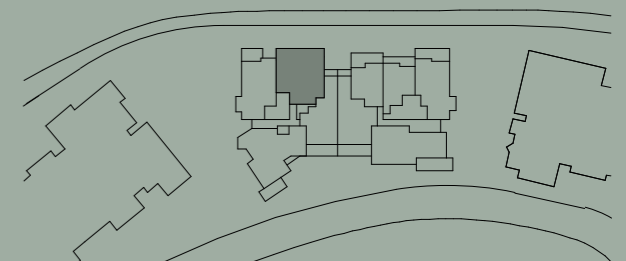
Apartment No. 323 Building BLUEGUM Lot No. 15

Colour Scheme
SUMMER - Kitchen
AUTUMN - Bathroom

2 BEDROOM APARTMENT

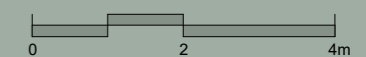
Internal Area 82 m²
Balcony Area 15 m²
Total Area 97 m²

Areas subject to change in accordance with the provisions of the contract. Area includes balcony and/or terrace where applicable. It excludes associated parking and external storage areas.

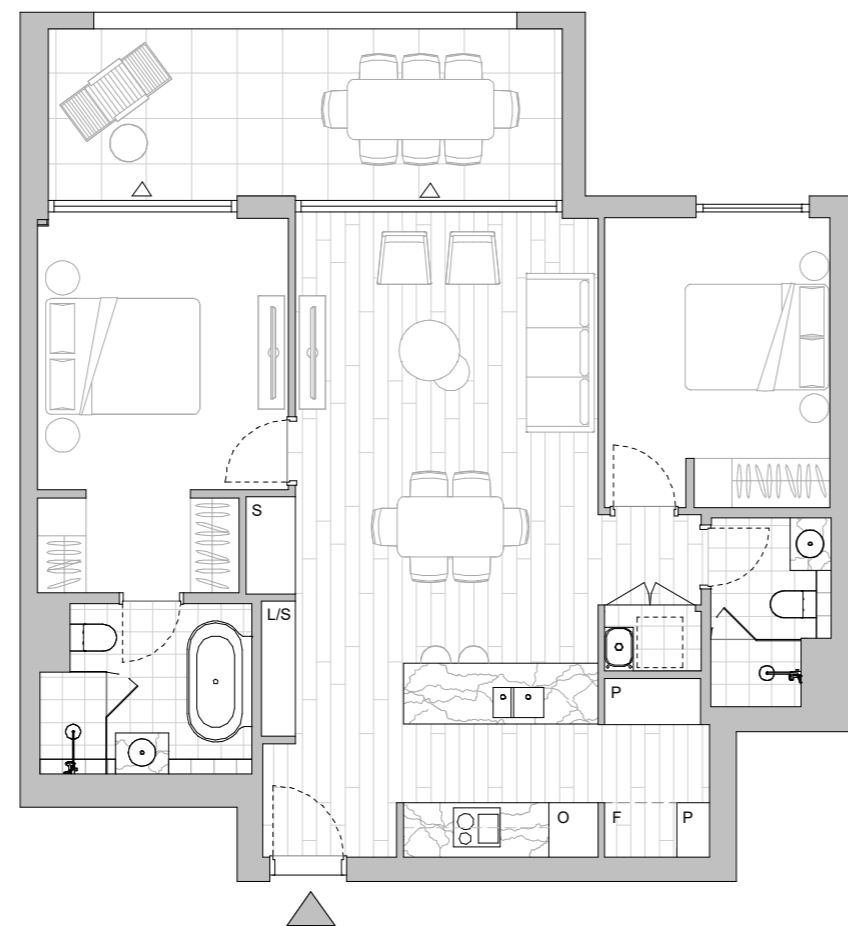


LEGEND - As Applicable

- | | | |
|----------------|----------------------|--------------------|
| ▲ Access | △ Balcony Access | ** Vertical Screen |
| F Fridge Space | IF Integrated Fridge | SL Skylight |
| P Pantry | S Storage | SY Study |
| O Oven Stack | L Linen | |
| M Media | K King Bed | |



This floor plan was produced prior to construction and while the information contained herein is believed to be correct it is not guaranteed. Changes will undoubtedly be made in accordance with the contract for sale. The plan does not show additional features such as hot water systems, services or bulkheads necessary for services. Dimensions, areas and scale of floor plans are approximate only. Dimensions are measured, and areas are calculated, in accordance with the Australian Property Institute Method of Measurement effective at the date of preparation of the Floor Plan. The furniture and furnishings depicted are not included with any sale. Purchasers must refer to the contract for sale for the list of inclusions. Furnishings should not be taken to indicate the final position of power points, TV connection points and the like. Bed sizes shown are indicative only and not guaranteed. All graphics, including design and extent of tile/paver/carpet areas, landscaping, balustrades, louvres, sun shading, fencing, privacy screens, services equipment and wintergardens are for illustrative purposes only and are not to be relied on as a representative of the final product. All level changes in the courtyards may not be shown.



LEVEL 3

HIGHFOREST

APARTMENTS

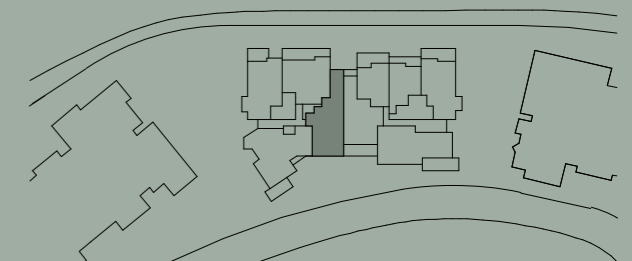
Apartment No. 324 Building BLUEGUM Lot No. 16

Colour Scheme
AUTUMN

2 BEDROOM APARTMENT

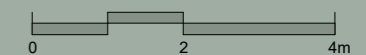
Internal Area 102 m²
Balcony Area 16 m²
Total Area 118 m²

Areas subject to change in accordance with the provisions of the contract. Area includes balcony and/or terrace where applicable. It excludes associated parking and external storage areas.

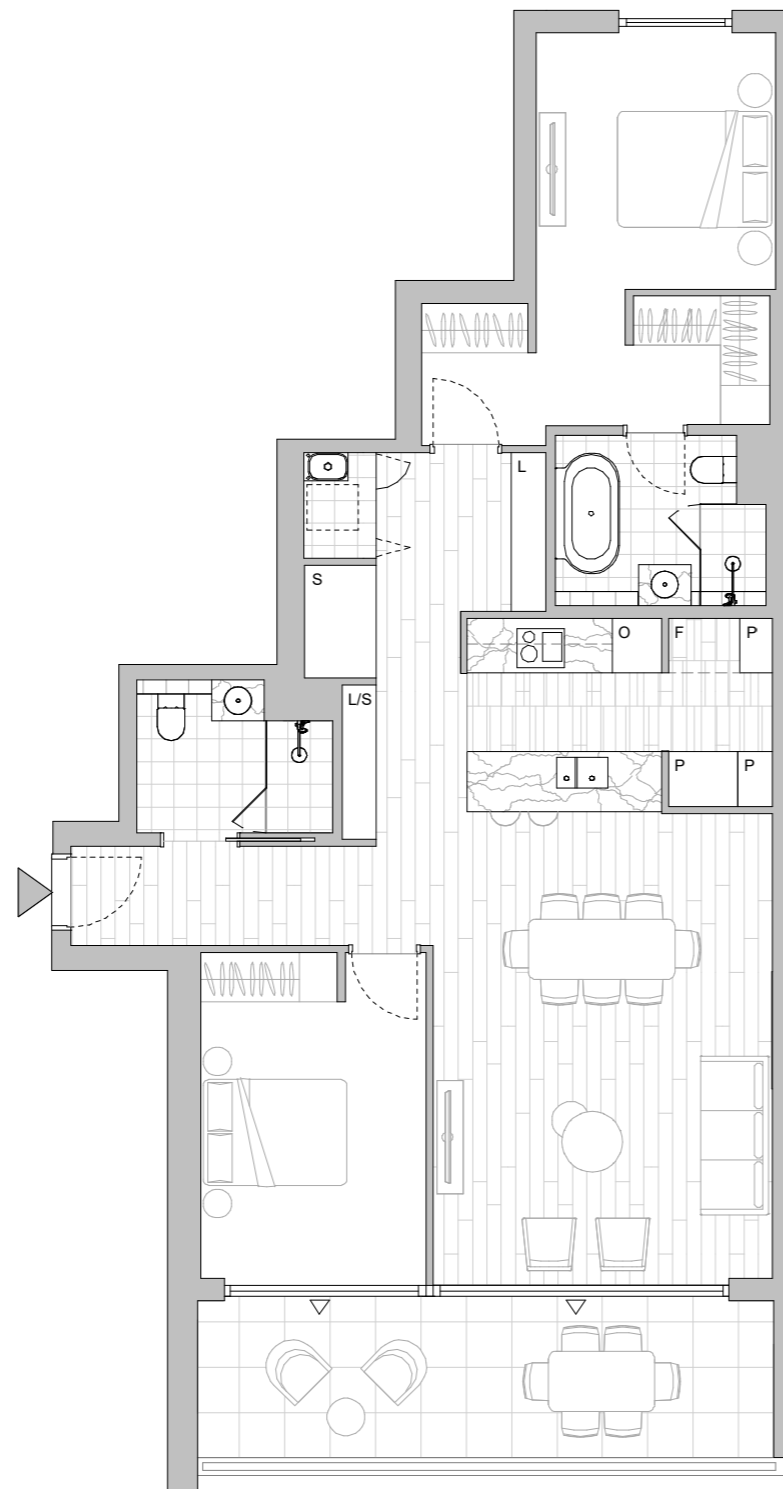


LEGEND - As Applicable

- | | | |
|----------------|----------------------|--------------------|
| ▲ Access | △ Balcony Access | ** Vertical Screen |
| F Fridge Space | IF Integrated Fridge | SL Skylight |
| P Pantry | S Storage | SY Study |
| O Oven Stack | L Linen | |
| M Media | K King Bed | |



This floor plan was produced prior to construction and while the information contained herein is believed to be correct it is not guaranteed. Changes will undoubtedly be made in accordance with the contract for sale. The plan does not show additional features such as hot water systems, services or bulkheads necessary for services. Dimensions, areas and scale of floor plans are approximate only. Dimensions are measured, and areas are calculated, in accordance with the Australian Property Institute Method of Measurement effective at the date of preparation of the Floor Plan. The furniture and furnishings depicted are not included with any sale. Purchasers must refer to the contract for sale for the list of inclusions. Furnishings should not be taken to indicate the final position of power points, TV connection points and the like. Bed sizes shown are indicative only and not guaranteed. All graphics, including design and extent of tile/paver/carpet areas, landscaping, balustrades, louvres, sun shading, fencing, privacy screens, services equipment and wintergardens are for illustrative purposes only and are not to be relied on as a representative of the final product. All level changes in the courtyards may not be shown.



LEVEL 3

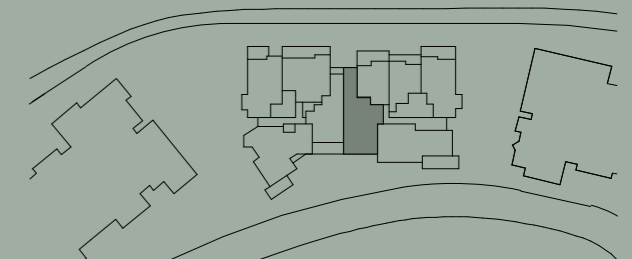
Apartment No. 326 Building BLUEGUM Lot No. 18

Colour Scheme
SUMMER - Kitchen
AUTUMN - Bathroom

2 BEDROOM + MEDIA APARTMENT

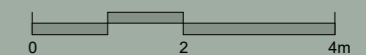
Internal Area 97 m²
Balcony Area 16 m²
Total Area 113 m²

Areas subject to change in accordance with the provisions of the contract. Area includes balcony and/or terrace where applicable. It excludes associated parking and external storage areas.

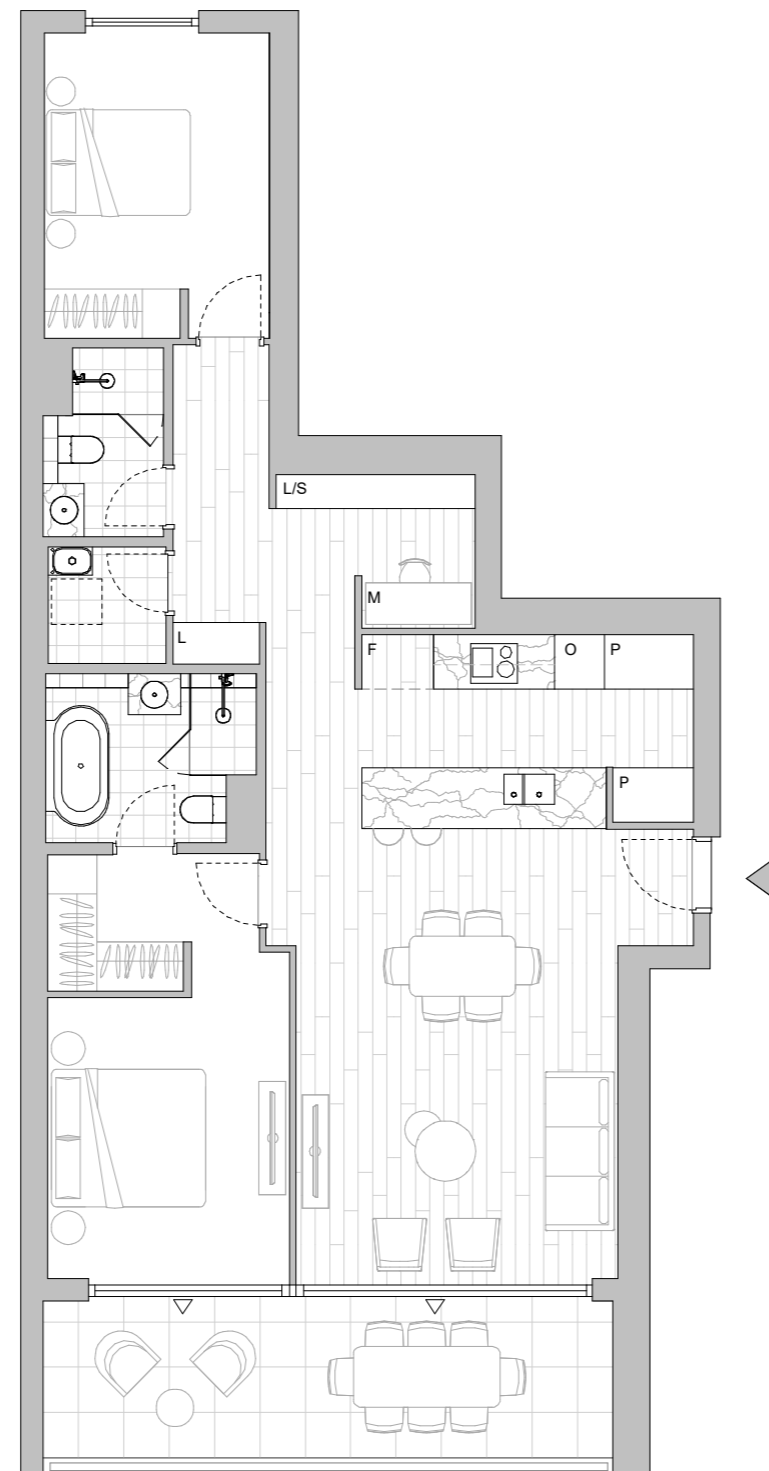


LEGEND - As Applicable

- | | | |
|----------------|----------------------|--------------------|
| ▲ Access | △ Balcony Access | ** Vertical Screen |
| F Fridge Space | IF Integrated Fridge | SL Skylight |
| P Pantry | S Storage | SY Study |
| O Oven Stack | L Linen | |
| M Media | K King Bed | |



This floor plan was produced prior to construction and while the information contained herein is believed to be correct it is not guaranteed. Changes will undoubtedly be made in accordance with the contract for sale. The plan does not show additional features such as hot water systems, services or bulkheads necessary for services. Dimensions, areas and scale of floor plans are approximate only. Dimensions are measured, and areas are calculated, in accordance with the Australian Property Institute Method of Measurement effective at the date of preparation of the Floor Plan. The furniture and furnishings depicted are not included with any sale. Purchasers must refer to the contract for sale for the list of inclusions. Furnishings should not be taken to indicate the final position of power points, TV connection points and the like. Bed sizes shown are indicative only and not guaranteed. All graphics, including design and extent of tile/paver/carpet areas, landscaping, balustrades, louvres, sun shading, fencing, privacy screens, services equipment and wintergardens are for illustrative purposes only and are not to be relied on as a representative of the final product. All level changes in the courtyards may not be shown.



LEVEL 3

HIGHFOREST

APARTMENTS

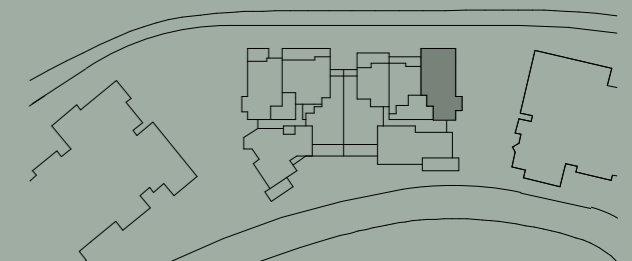
Apartment No. 329 Building BLUEGUM Lot No. 21

Colour Scheme
SUMMER

2 BEDROOM + STUDY APARTMENT

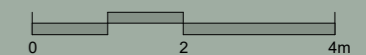
Internal Area 94 m²
Balcony Area 15 m²
Total Area 109 m²

Areas subject to change in accordance with the provisions of the contract. Area includes balcony and/or terrace where applicable. It excludes associated parking and external storage areas.

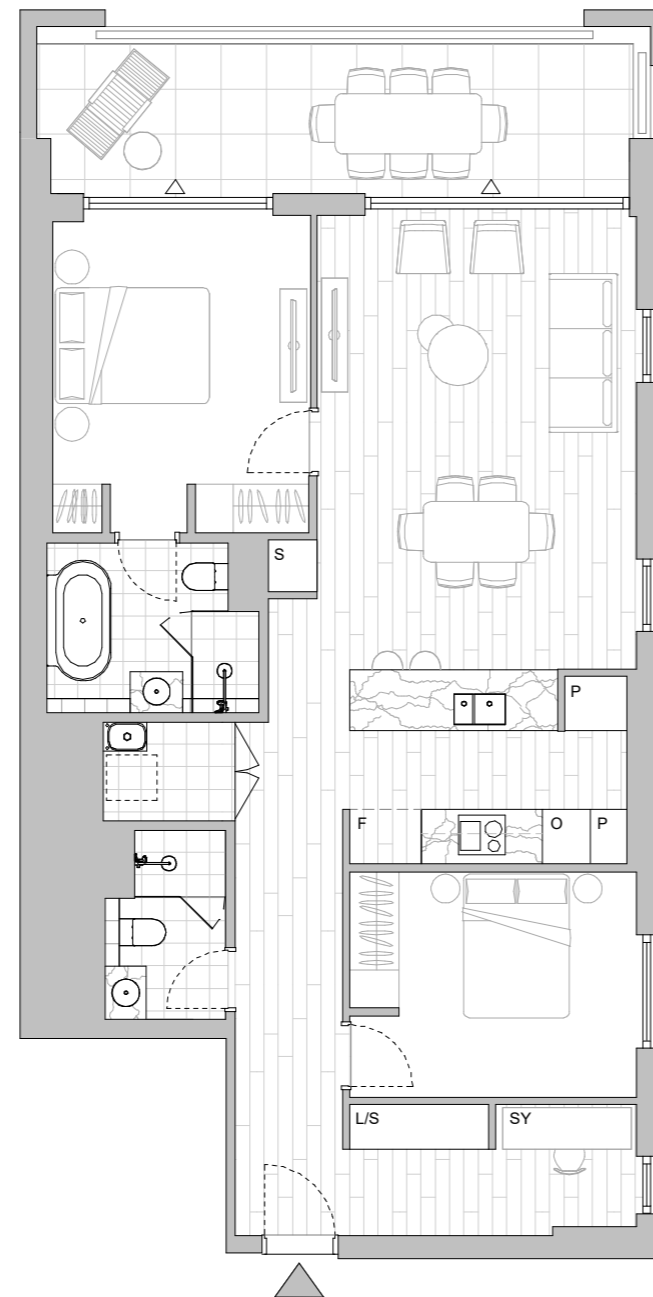


LEGEND - As Applicable

Access	Balcony Access	** Vertical Screen
F Fridge Space	IF Integrated Fridge	SL Skylight
P Pantry	S Storage	SY Study
O Oven Stack	L Linen	
M Media	K King Bed	



This floor plan was produced prior to construction and while the information contained herein is believed to be correct it is not guaranteed. Changes will undoubtedly be made in accordance with the contract for sale. The plan does not show additional features such as hot water systems, services or bulkheads necessary for services. Dimensions, areas and scale of floor plans are approximate only. Dimensions are measured, and areas are calculated, in accordance with the Australian Property Institute Method of Measurement effective at the date of preparation of the Floor Plan. The furniture and furnishings depicted are not included with any sale. Purchasers must refer to the contract for sale for the list of inclusions. Furnishings should not be taken to indicate the final position of power points, TV connection points and the like. Bed sizes shown are indicative only and not guaranteed. All graphics, including design and extent of tile/paver/carpet areas, landscaping, balustrades, louvres, sun shading, fencing, privacy screens, services equipment and wintergardens are for illustrative purposes only and are not to be relied on as a representative of the final product. All level changes in the courtyards may not be shown.



LEVEL 3

HIGH FOREST

APARTMENTS

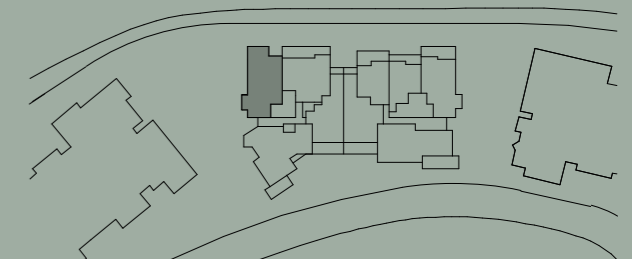
Apartment No. 422 Building BLUEGUM Lot No. 23

Colour Scheme
SUMMER

2 BEDROOM + STUDY APARTMENT

Internal Area 98 m²
Balcony Area 10 m²
Total Area 108 m²

Areas subject to change in accordance with the provisions of the contract. Area includes balcony and/or terrace where applicable. It excludes associated parking and external storage areas.

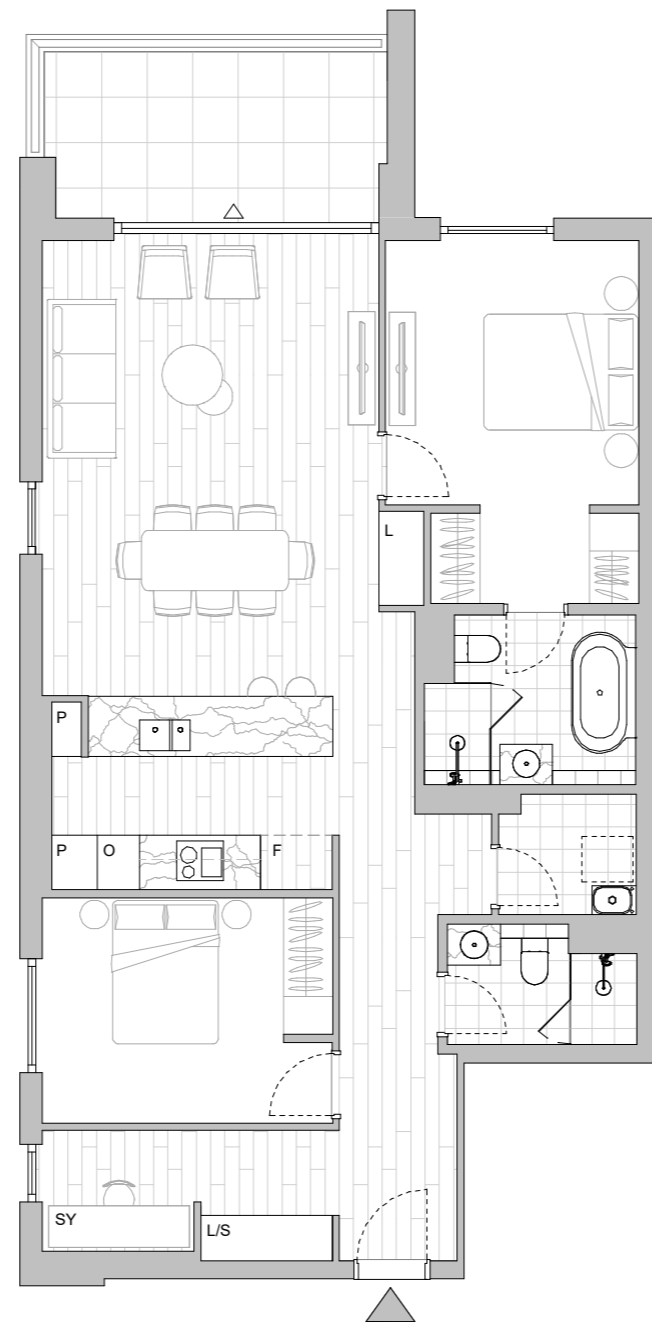


LEGEND - As Applicable

- | | | |
|----------------|----------------------|--------------------|
| ▲ Access | △ Balcony Access | ** Vertical Screen |
| F Fridge Space | IF Integrated Fridge | SL Skylight |
| P Pantry | S Storage | SY Study |
| O Oven Stack | L Linen | |
| M Media | K King Bed | |



This floor plan was produced prior to construction and while the information contained herein is believed to be correct it is not guaranteed. Changes will undoubtedly be made in accordance with the contract for sale. The plan does not show additional features such as hot water systems, services or bulkheads necessary for services. Dimensions, areas and scale of floor plans are approximate only. Dimensions are measured, and areas are calculated, in accordance with the Australian Property Institute Method of Measurement effective at the date of preparation of the Floor Plan. The furniture and furnishings depicted are not included with any sale. Purchasers must refer to the contract for sale for the list of inclusions. Furnishings should not be taken to indicate the final position of power points, TV connection points and the like. Bed sizes shown are indicative only and not guaranteed. All graphics, including design and extent of tile/paver/carpet areas, landscaping, balustrades, louvres, sun shading, fencing, privacy screens, services equipment and wintergardens are for illustrative purposes only and are not to be relied on as a representative of the final product. All level changes in the courtyards may not be shown.



LEVEL 4

HIGH FOREST

APARTMENTS

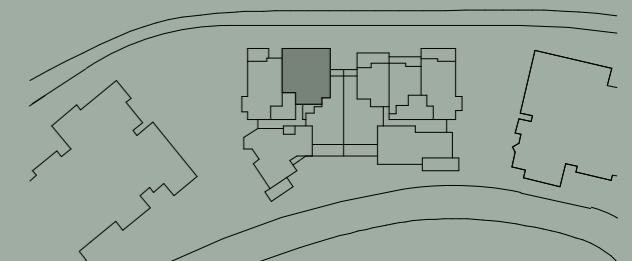
Apartment No. 423 Building BLUEGUM Lot No. 24

Colour Scheme
AUTUMN

2 BEDROOM APARTMENT

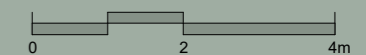
Internal Area 82 m²
Balcony Area 15 m²
Total Area 97 m²

Areas subject to change in accordance with the provisions of the contract. Area includes balcony and/or terrace where applicable. It excludes associated parking and external storage areas.

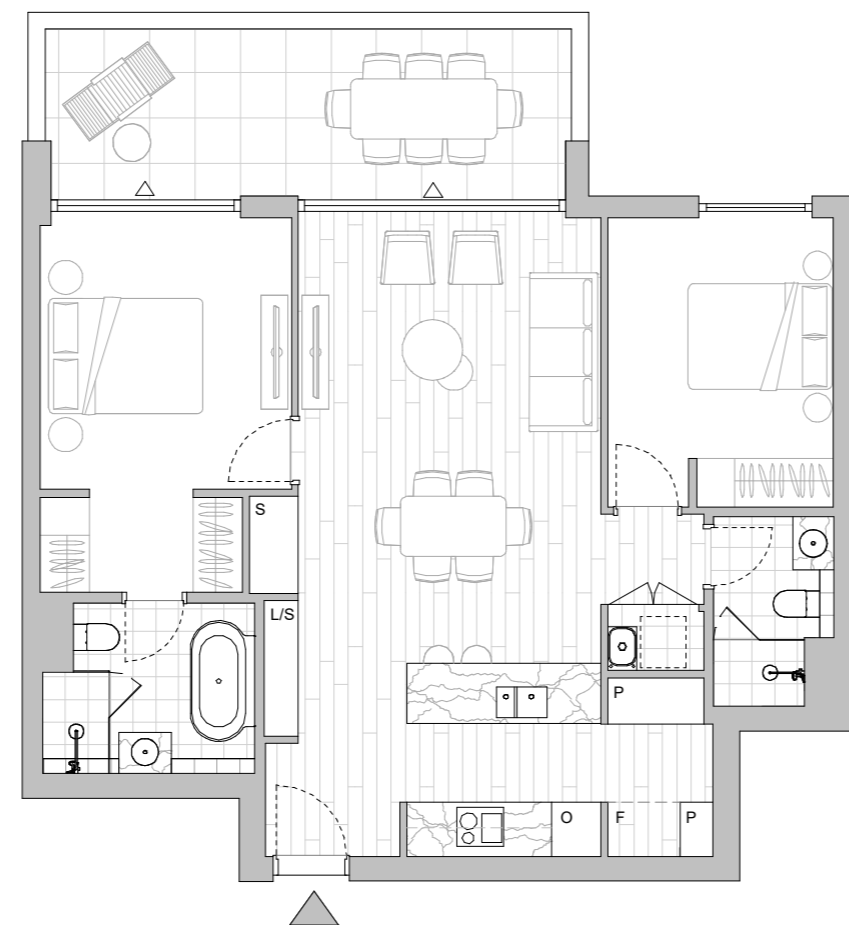


LEGEND - As Applicable

- | | | |
|----------------|----------------------|--------------------|
| ▲ Access | △ Balcony Access | ** Vertical Screen |
| F Fridge Space | IF Integrated Fridge | SL Skylight |
| P Pantry | S Storage | SY Study |
| O Oven Stack | L Linen | |
| M Media | K King Bed | |



This floor plan was produced prior to construction and while the information contained herein is believed to be correct it is not guaranteed. Changes will undoubtedly be made in accordance with the contract for sale. The plan does not show additional features such as hot water systems, services or bulkheads necessary for services. Dimensions, areas and scale of floor plans are approximate only. Dimensions are measured, and areas are calculated, in accordance with the Australian Property Institute Method of Measurement effective at the date of preparation of the Floor Plan. The furniture and furnishings depicted are not included with any sale. Purchasers must refer to the contract for sale for the list of inclusions. Furnishings should not be taken to indicate the final position of power points, TV connection points and the like. Bed sizes shown are indicative only and not guaranteed. All graphics, including design and extent of tile/paver/carpet areas, landscaping, balustrades, louvres, sun shading, fencing, privacy screens, services equipment and wintergardens are for illustrative purposes only and are not to be relied on as a representative of the final product. All level changes in the courtyards may not be shown.



LEVEL 4

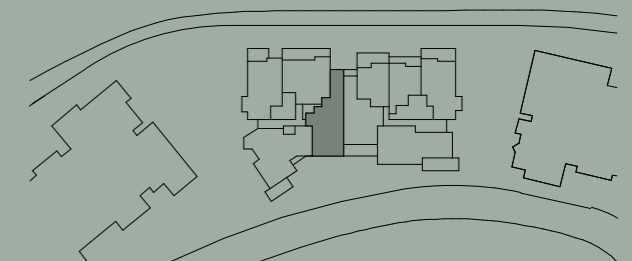
Apartment No. 424 Building BLUEGUM Lot No. 25

Colour Scheme
 SUMMER - Kitchen
 AUTUMN - Bathroom

2 BEDROOM APARTMENT

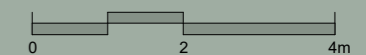
Internal Area 102 m²
 Balcony Area 16 m²
 Total Area 118 m²

Areas subject to change in accordance with the provisions of the contract. Area includes balcony and/or terrace where applicable. It excludes associated parking and external storage areas.

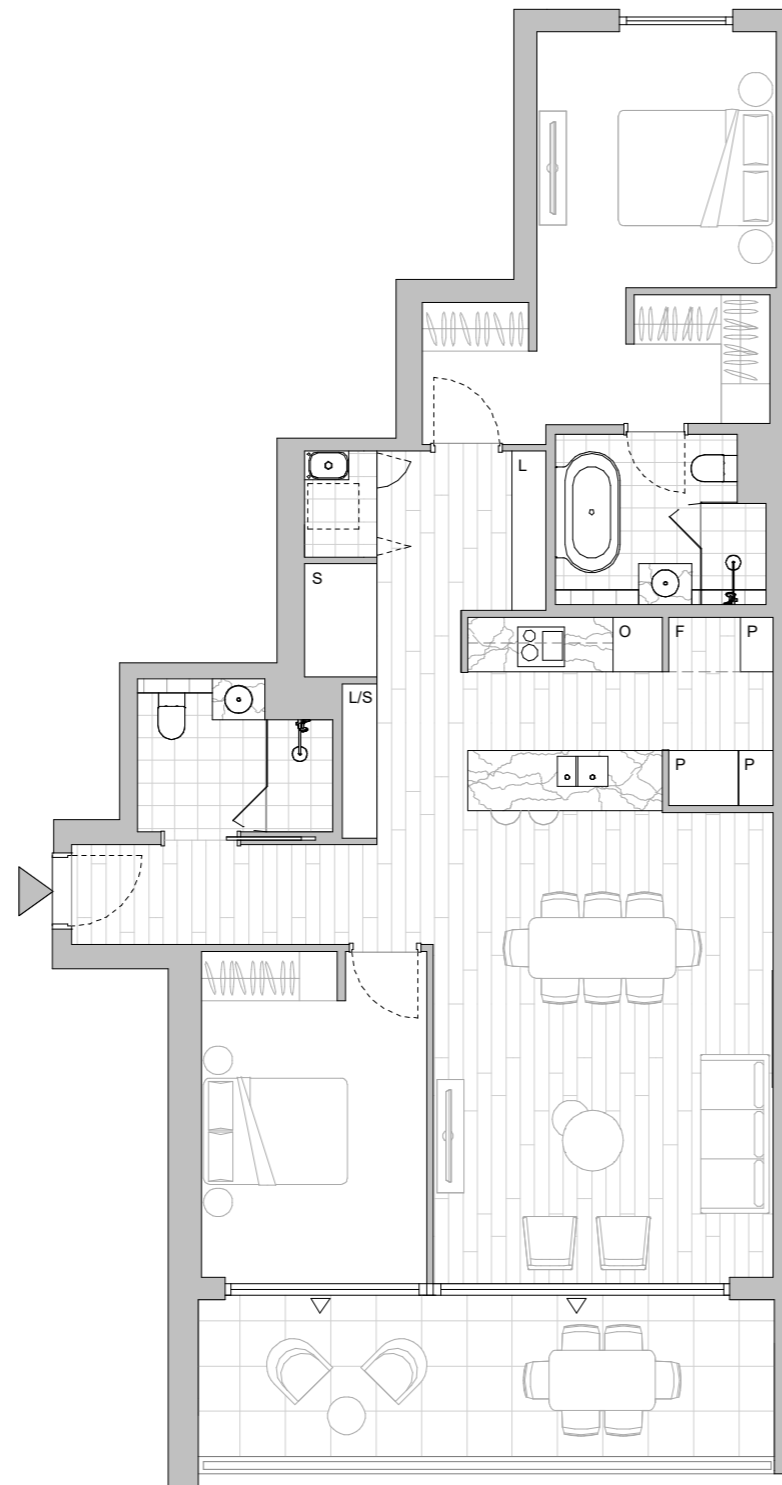


LEGEND - As Applicable

- | | | |
|----------------|----------------------|--------------------|
| ▲ Access | △ Balcony Access | ** Vertical Screen |
| F Fridge Space | IF Integrated Fridge | SL Skylight |
| P Pantry | S Storage | SY Study |
| O Oven Stack | L Linen | |
| M Media | K King Bed | |



This floor plan was produced prior to construction and while the information contained herein is believed to be correct it is not guaranteed. Changes will undoubtedly be made in accordance with the contract for sale. The plan does not show additional features such as hot water systems, services or bulkheads necessary for services. Dimensions, areas and scale of floor plans are approximate only. Dimensions are measured, and areas are calculated, in accordance with the Australian Property Institute Method of Measurement effective at the date of preparation of the Floor Plan. The furniture and furnishings depicted are not included with any sale. Purchasers must refer to the contract for sale for the list of inclusions. Furnishings should not be taken to indicate the final position of power points, TV connection points and the like. Bed sizes shown are indicative only and not guaranteed. All graphics, including design and extent of tile/paver/carpet areas, landscaping, balustrades, louvres, sun shading, fencing, privacy screens, services equipment and wintergardens are for illustrative purposes only and are not to be relied on as a representative of the final product. All level changes in the courtyards may not be shown.



LEVEL 4

HIGH FOREST

APARTMENTS

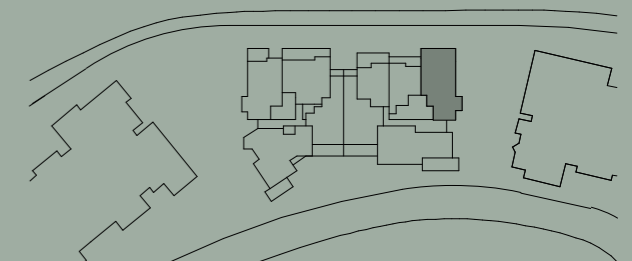
Apartment No. 429 Building BLUEGUM Lot No. 30

Colour Scheme
AUTUMN - Kitchen
SUMMER - Bathroom

2 BEDROOM + STUDY APARTMENT

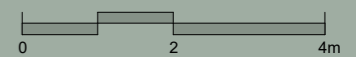
Internal Area 94 m²
Balcony Area 17 m²
Total Area 111 m²

Areas subject to change in accordance with the provisions of the contract. Area includes balcony and/or terrace where applicable. It excludes associated parking and external storage areas.

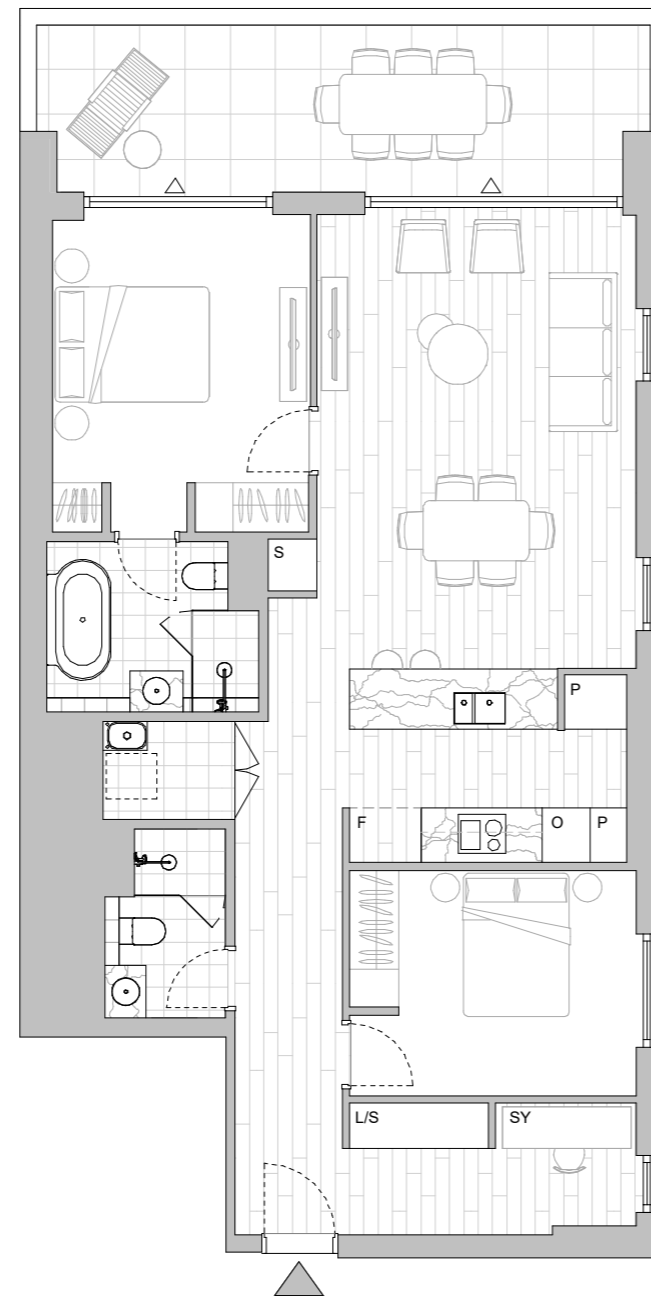


LEGEND - As Applicable

- | | | |
|----------------|----------------------|--------------------|
| ▲ Access | △ Balcony Access | ** Vertical Screen |
| F Fridge Space | IF Integrated Fridge | SL Skylight |
| P Pantry | S Storage | SY Study |
| O Oven Stack | L Linen | |
| M Media | K King Bed | |



This floor plan was produced prior to construction and while the information contained herein is believed to be correct it is not guaranteed. Changes will undoubtedly be made in accordance with the contract for sale. The plan does not show additional features such as hot water systems, services or bulkheads necessary for services. Dimensions, areas and scale of floor plans are approximate only. Dimensions are measured, and areas are calculated, in accordance with the Australian Property Institute Method of Measurement effective at the date of preparation of the Floor Plan. The furniture and furnishings depicted are not included with any sale. Purchasers must refer to the contract for sale for the list of inclusions. Furnishings should not be taken to indicate the final position of power points, TV connection points and the like. Bed sizes shown are indicative only and not guaranteed. All graphics, including design and extent of tile/paver/carpet areas, landscaping, balustrades, louvres, sun shading, fencing, privacy screens, services equipment and wintergardens are for illustrative purposes only and are not to be relied on as a representative of the final product. All level changes in the courtyards may not be shown.



LEVEL 4

HIGHFOREST

APARTMENTS

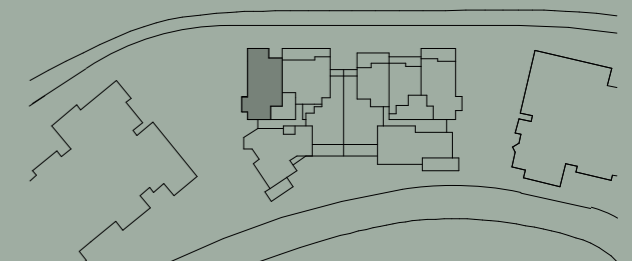
Apartment No. 522 Building BLUEGUM Lot No. 32

Colour Scheme
AUTUMN - Kitchen
SUMMER - Bathroom

2 BEDROOM + STUDY APARTMENT

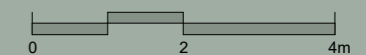
Internal Area 98 m²
Balcony Area 9 m²
Total Area 107 m²

Areas subject to change in accordance with the provisions of the contract. Area includes balcony and/or terrace where applicable. It excludes associated parking and external storage areas.

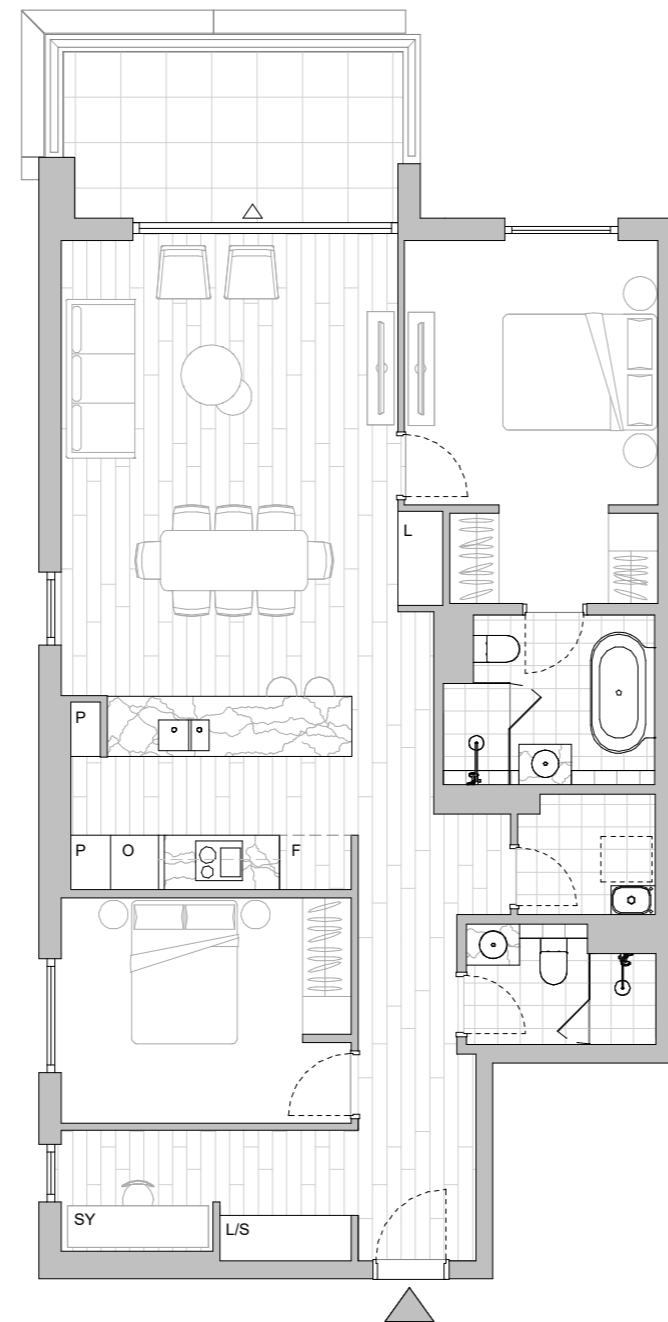


LEGEND - As Applicable

- | | | |
|----------------|----------------------|--------------------|
| ▲ Access | △ Balcony Access | ** Vertical Screen |
| F Fridge Space | IF Integrated Fridge | SL Skylight |
| P Pantry | S Storage | SY Study |
| O Oven Stack | L Linen | |
| M Media | K King Bed | |



This floor plan was produced prior to construction and while the information contained herein is believed to be correct it is not guaranteed. Changes will undoubtedly be made in accordance with the contract for sale. The plan does not show additional features such as hot water systems, services or bulkheads necessary for services. Dimensions, areas and scale of floor plans are approximate only. Dimensions are measured, and areas are calculated, in accordance with the Australian Property Institute Method of Measurement effective at the date of preparation of the Floor Plan. The furniture and furnishings depicted are not included with any sale. Purchasers must refer to the contract for sale for the list of inclusions. Furnishings should not be taken to indicate the final position of power points, TV connection points and the like. Bed sizes shown are indicative only and not guaranteed. All graphics, including design and extent of tile/paver/carpet areas, landscaping, balustrades, louvres, sun shading, fencing, privacy screens, services equipment and wintergardens are for illustrative purposes only and are not to be relied on as a representative of the final product. All level changes in the courtyards may not be shown.



LEVEL 5

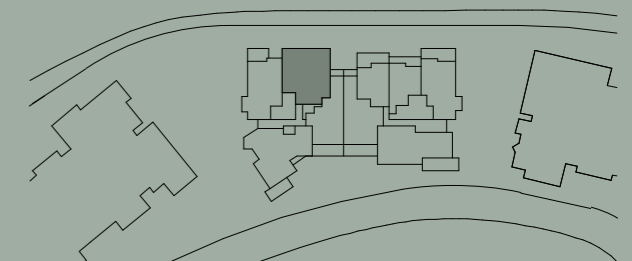
Apartment No. 523 Building BLUEGUM Lot No. 33

Colour Scheme
 SUMMER - Kitchen
 AUTUMN - Bathroom

2 BEDROOM APARTMENT

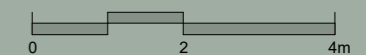
Internal Area 82 m²
 Balcony Area 15 m²
 Total Area 97 m²

Areas subject to change in accordance with the provisions of the contract. Area includes balcony and/or terrace where applicable. It excludes associated parking and external storage areas.

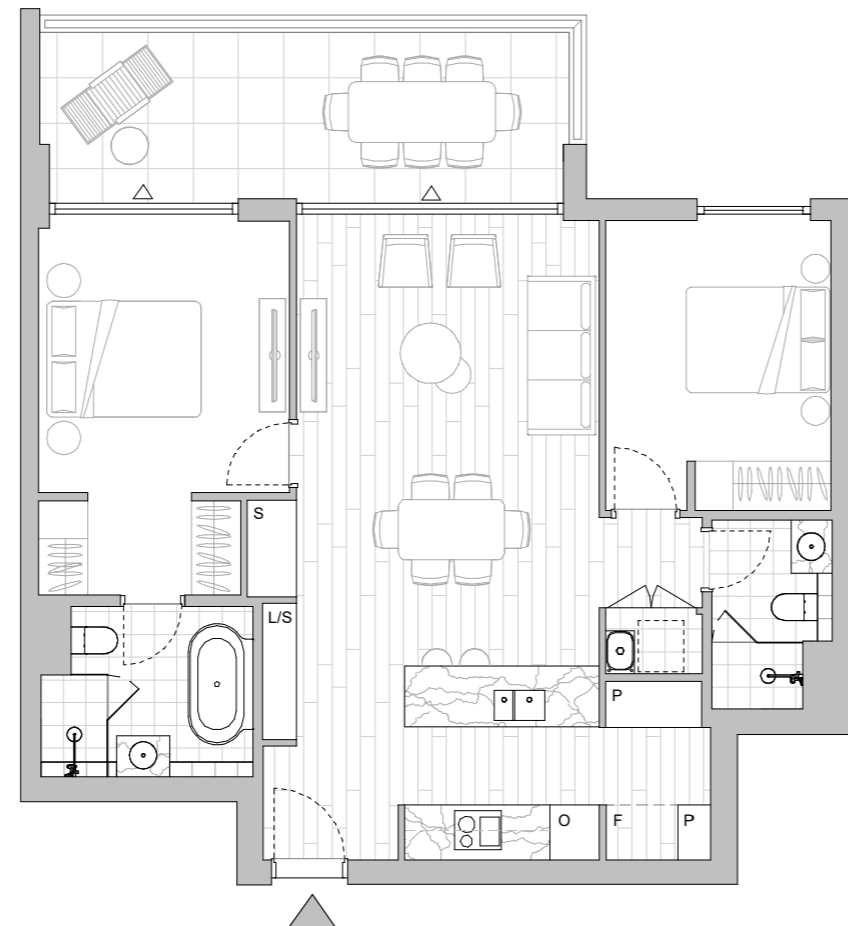


LEGEND - As Applicable

- | | | |
|----------------|----------------------|--------------------|
| ▲ Access | △ Balcony Access | ** Vertical Screen |
| F Fridge Space | IF Integrated Fridge | SL Skylight |
| P Pantry | S Storage | SY Study |
| O Oven Stack | L Linen | |
| M Media | K King Bed | |



This floor plan was produced prior to construction and while the information contained herein is believed to be correct it is not guaranteed. Changes will undoubtedly be made in accordance with the contract for sale. The plan does not show additional features such as hot water systems, services or bulkheads necessary for services. Dimensions, areas and scale of floor plans are approximate only. Dimensions are measured, and areas are calculated, in accordance with the Australian Property Institute Method of Measurement effective at the date of preparation of the Floor Plan. The furniture and furnishings depicted are not included with any sale. Purchasers must refer to the contract for sale for the list of inclusions. Furnishings should not be taken to indicate the final position of power points, TV connection points and the like. Bed sizes shown are indicative only and not guaranteed. All graphics, including design and extent of tile/paver/carpet areas, landscaping, balustrades, louvres, sun shading, fencing, privacy screens, services equipment and wintergardens are for illustrative purposes only and are not to be relied on as a representative of the final product. All level changes in the courtyards may not be shown.



LEVEL 5

HIGHFOREST

APARTMENTS

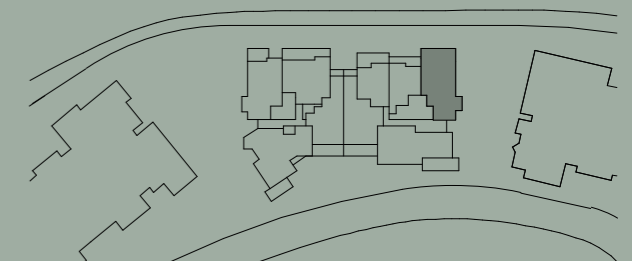
Apartment No. 529 Building BLUEGUM Lot No. 39

Colour Scheme
SUMMER

2 BEDROOM + STUDY APARTMENT

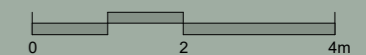
Internal Area 94 m²
Balcony Area 17 m²
Total Area 111 m²

Areas subject to change in accordance with the provisions of the contract. Area includes balcony and/or terrace where applicable. It excludes associated parking and external storage areas.

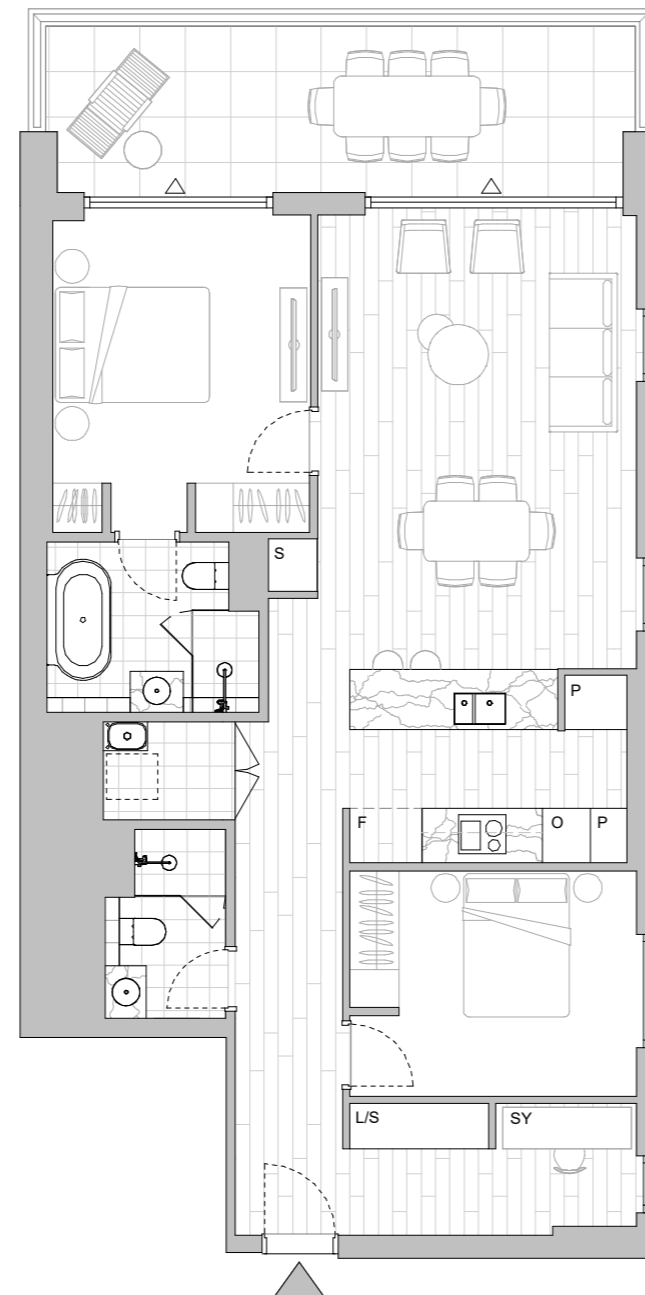


LEGEND - As Applicable

Access	Balcony Access	** Vertical Screen
F Fridge Space	IF Integrated Fridge	SL Skylight
P Pantry	S Storage	SY Study
O Oven Stack	L Linen	
M Media	K King Bed	



This floor plan was produced prior to construction and while the information contained herein is believed to be correct it is not guaranteed. Changes will undoubtedly be made in accordance with the contract for sale. The plan does not show additional features such as hot water systems, services or bulkheads necessary for services. Dimensions, areas and scale of floor plans are approximate only. Dimensions are measured, and areas are calculated, in accordance with the Australian Property Institute Method of Measurement effective at the date of preparation of the Floor Plan. The furniture and furnishings depicted are not included with any sale. Purchasers must refer to the contract for sale for the list of inclusions. Furnishings should not be taken to indicate the final position of power points, TV connection points and the like. Bed sizes shown are indicative only and not guaranteed. All graphics, including design and extent of tile/paver/carpet areas, landscaping, balustrades, louvres, sun shading, fencing, privacy screens, services equipment and wintergardens are for illustrative purposes only and are not to be relied on as a representative of the final product. All level changes in the courtyards may not be shown.



LEVEL 5

HIGH FOREST

APARTMENTS

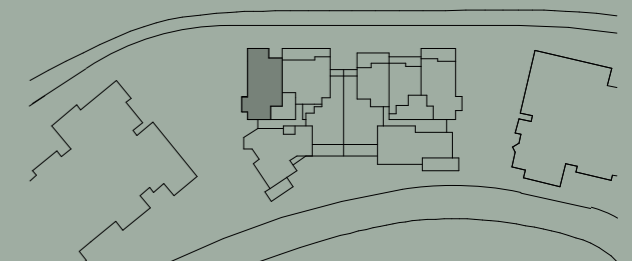
Apartment No. 615 Building BLUEGUM Lot No. 41

Colour Scheme
SUMMER

2 BEDROOM + STUDY APARTMENT

Internal Area 98 m²
Balcony Area 9 m²
Total Area 107 m²

Areas subject to change in accordance with the provisions of the contract. Area includes balcony and/or terrace where applicable. It excludes associated parking and external storage areas.

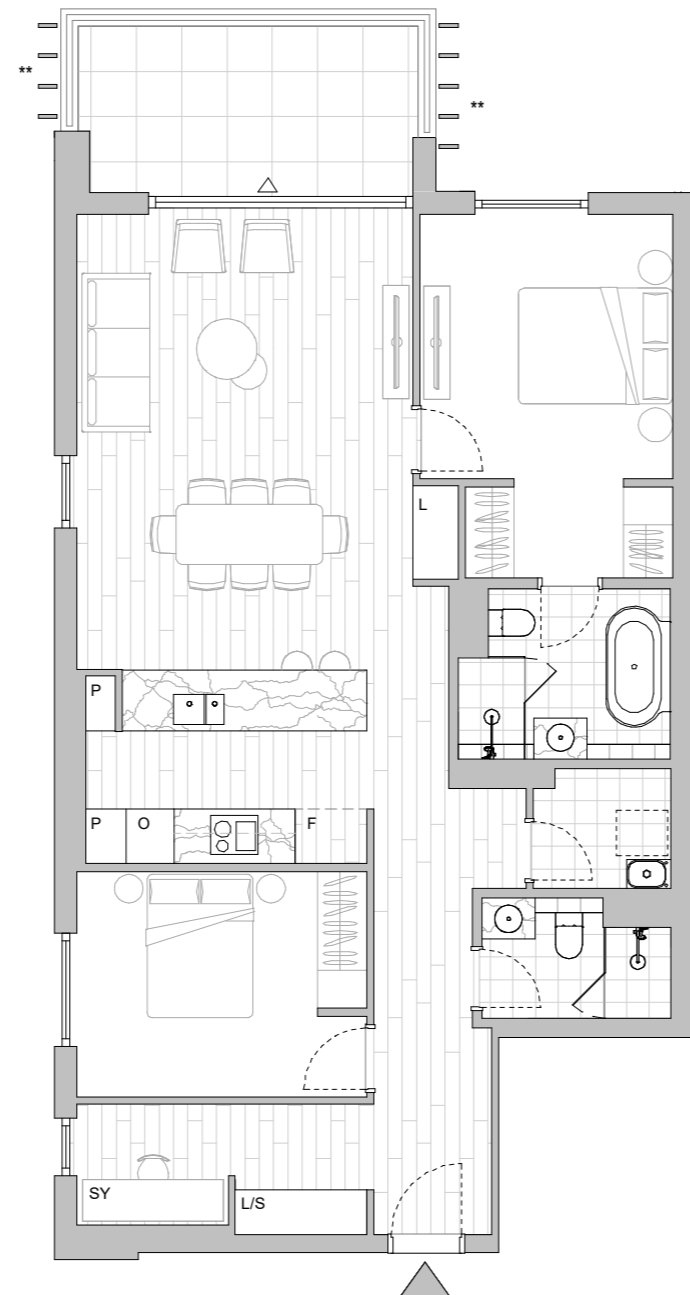


LEGEND - As Applicable

- | | | |
|----------------|----------------------|--------------------|
| ▲ Access | △ Balcony Access | ** Vertical Screen |
| F Fridge Space | IF Integrated Fridge | SL Skylight |
| P Pantry | S Storage | SY Study |
| O Oven Stack | L Linen | |
| M Media | K King Bed | |



This floor plan was produced prior to construction and while the information contained herein is believed to be correct it is not guaranteed. Changes will undoubtedly be made in accordance with the contract for sale. The plan does not show additional features such as hot water systems, services or bulkheads necessary for services. Dimensions, areas and scale of floor plans are approximate only. Dimensions are measured, and areas are calculated, in accordance with the Australian Property Institute Method of Measurement effective at the date of preparation of the Floor Plan. The furniture and furnishings depicted are not included with any sale. Purchasers must refer to the contract for sale for the list of inclusions. Furnishings should not be taken to indicate the final position of power points, TV connection points and the like. Bed sizes shown are indicative only and not guaranteed. All graphics, including design and extent of tile/paver/carpet areas, landscaping, balustrades, louvres, sun shading, fencing, privacy screens, services equipment and wintergardens are for illustrative purposes only and are not to be relied on as a representative of the final product. All level changes in the courtyards may not be shown.



LEVEL 6

HIGH FOREST

APARTMENTS

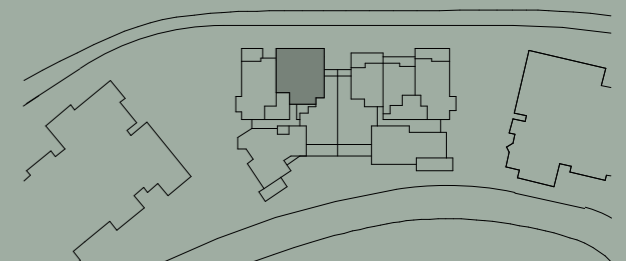
Apartment No. 616 Building BLUEGUM Lot No. 42

Colour Scheme
AUTUMN

2 BEDROOM APARTMENT

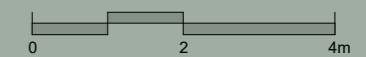
Internal Area 82 m²
Balcony Area 15 m²
Total Area 97 m²

Areas subject to change in accordance with the provisions of the contract. Area includes balcony and/or terrace where applicable. It excludes associated parking and external storage areas.

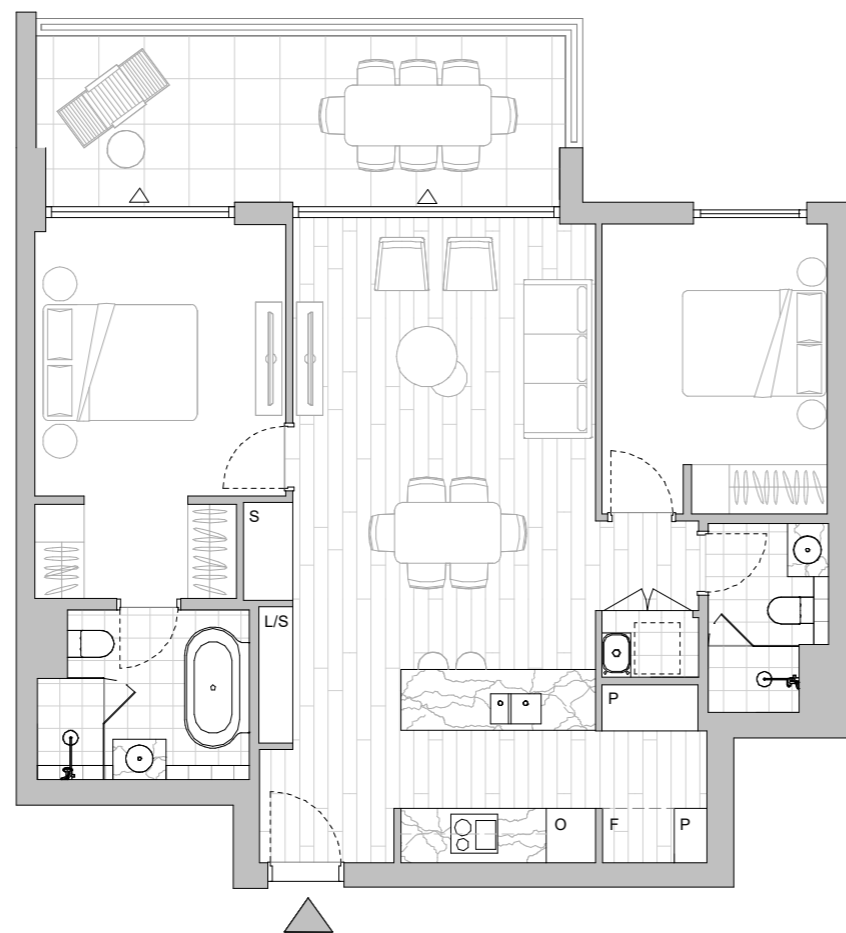


LEGEND - As Applicable

- | | | |
|----------------|----------------------|--------------------|
| ▲ Access | △ Balcony Access | ** Vertical Screen |
| F Fridge Space | IF Integrated Fridge | SL Skylight |
| P Pantry | S Storage | SY Study |
| O Oven Stack | L Linen | |
| M Media | K King Bed | |



This floor plan was produced prior to construction and while the information contained herein is believed to be correct it is not guaranteed. Changes will undoubtedly be made in accordance with the contract for sale. The plan does not show additional features such as hot water systems, services or bulkheads necessary for services. Dimensions, areas and scale of floor plans are approximate only. Dimensions are measured, and areas are calculated, in accordance with the Australian Property Institute Method of Measurement effective at the date of preparation of the Floor Plan. The furniture and furnishings depicted are not included with any sale. Purchasers must refer to the contract for sale for the list of inclusions. Furnishings should not be taken to indicate the final position of power points, TV connection points and the like. Bed sizes shown are indicative only and not guaranteed. All graphics, including design and extent of tile/paver/carpet areas, landscaping, balustrades, louvres, sun shading, fencing, privacy screens, services equipment and wintergardens are for illustrative purposes only and are not to be relied on as a representative of the final product. All level changes in the courtyards may not be shown.



LEVEL 6

HIGH FOREST

APARTMENTS

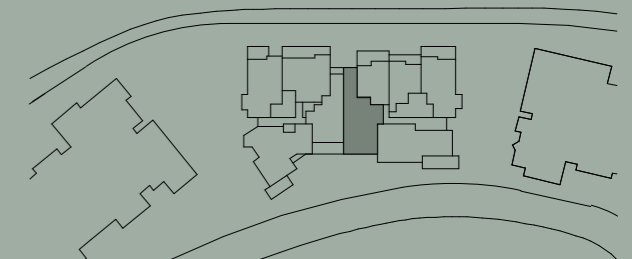
Apartment No. 619 Building BLUEGUM Lot No. 45

Colour Scheme
AUTUMN

2 BEDROOM + MEDIA APARTMENT

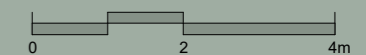
Internal Area 97 m²
Balcony Area 16 m²
Total Area 113 m²

Areas subject to change in accordance with the provisions of the contract. Area includes balcony and/or terrace where applicable. It excludes associated parking and external storage areas.

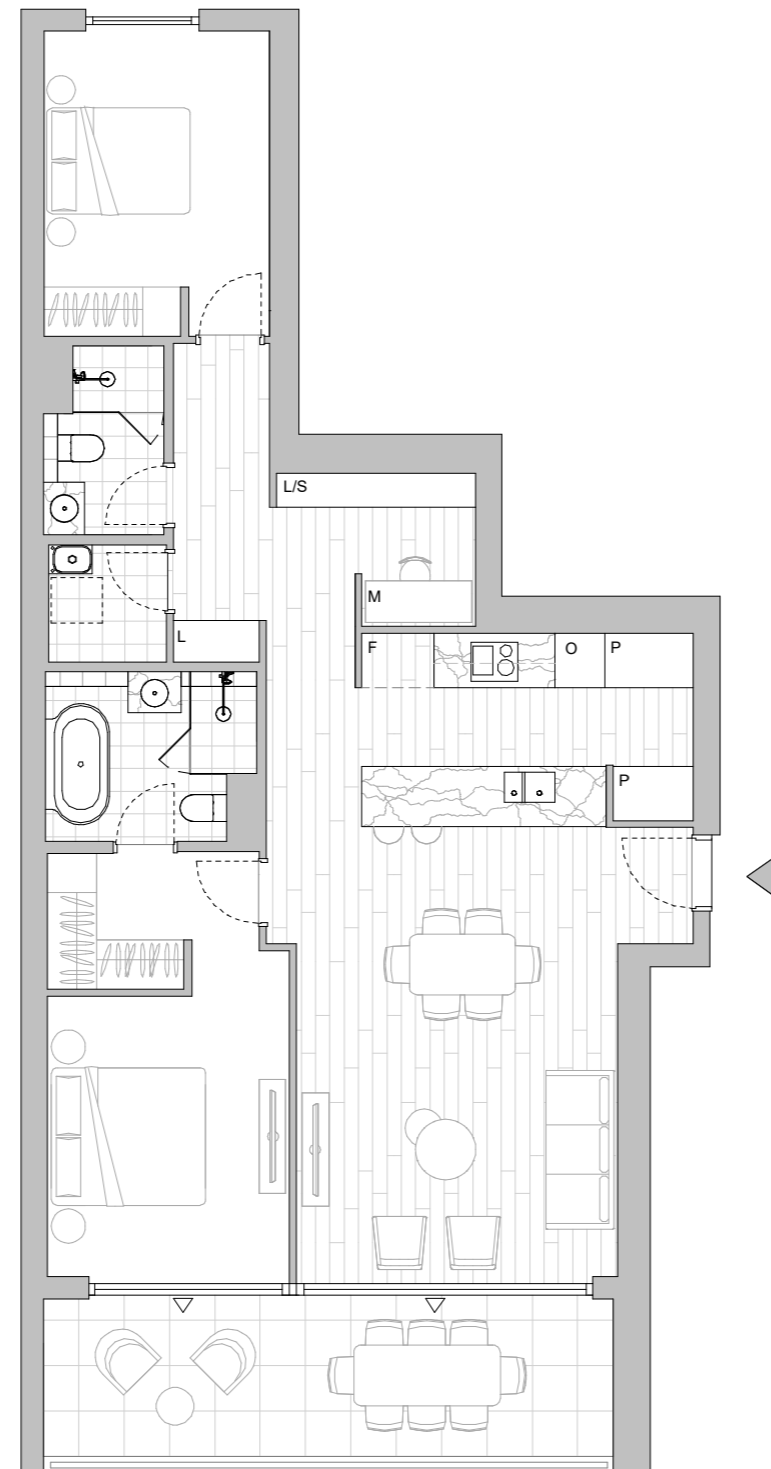


LEGEND - As Applicable

Access	Balcony Access	** Vertical Screen
F Fridge Space	IF Integrated Fridge	SL Skylight
P Pantry	S Storage	SY Study
O Oven Stack	L Linen	
M Media	K King Bed	



This floor plan was produced prior to construction and while the information contained herein is believed to be correct it is not guaranteed. Changes will undoubtedly be made in accordance with the contract for sale. The plan does not show additional features such as hot water systems, services or bulkheads necessary for services. Dimensions, areas and scale of floor plans are approximate only. Dimensions are measured, and areas are calculated, in accordance with the Australian Property Institute Method of Measurement effective at the date of preparation of the Floor Plan. The furniture and furnishings depicted are not included with any sale. Purchasers must refer to the contract for sale for the list of inclusions. Furnishings should not be taken to indicate the final position of power points, TV connection points and the like. Bed sizes shown are indicative only and not guaranteed. All graphics, including design and extent of tile/paver/carpet areas, landscaping, balustrades, louvres, sun shading, fencing, privacy screens, services equipment and wintergardens are for illustrative purposes only and are not to be relied on as a representative of the final product. All level changes in the courtyards may not be shown.



LEVEL 6

HIGH FOREST

APARTMENTS

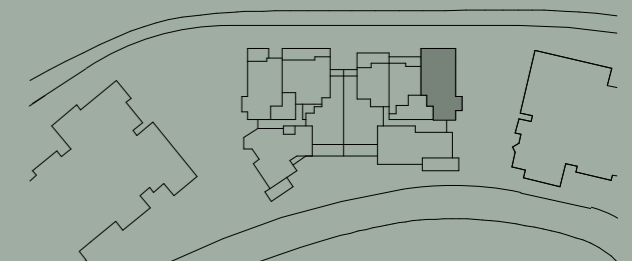
Apartment No. 622 Building BLUEGUM Lot No. 48

Colour Scheme
AUTUMN - Kitchen
SUMMER - Bathroom

2 BEDROOM + STUDY APARTMENT

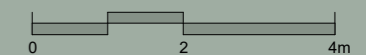
Internal Area 94 m²
Balcony Area 17 m²
Total Area 111 m²

Areas subject to change in accordance with the provisions of the contract. Area includes balcony and/or terrace where applicable. It excludes associated parking and external storage areas.

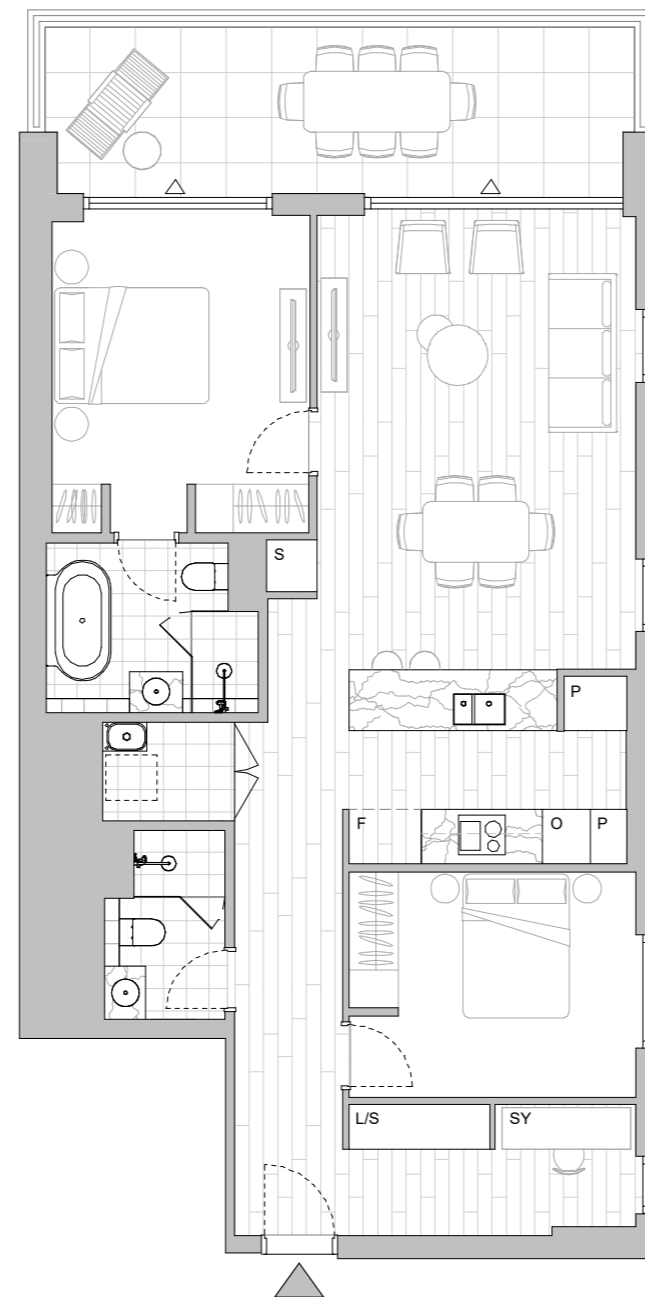


LEGEND - As Applicable

- | | | |
|----------------|----------------------|--------------------|
| ▲ Access | △ Balcony Access | ** Vertical Screen |
| F Fridge Space | IF Integrated Fridge | SL Skylight |
| P Pantry | S Storage | SY Study |
| O Oven Stack | L Linen | |
| M Media | K King Bed | |



This floor plan was produced prior to construction and while the information contained herein is believed to be correct it is not guaranteed. Changes will undoubtedly be made in accordance with the contract for sale. The plan does not show additional features such as hot water systems, services or bulkheads necessary for services. Dimensions, areas and scale of floor plans are approximate only. Dimensions are measured, and areas are calculated, in accordance with the Australian Property Institute Method of Measurement effective at the date of preparation of the Floor Plan. The furniture and furnishings depicted are not included with any sale. Purchasers must refer to the contract for sale for the list of inclusions. Furnishings should not be taken to indicate the final position of power points, TV connection points and the like. Bed sizes shown are indicative only and not guaranteed. All graphics, including design and extent of tile/paver/carpet areas, landscaping, balustrades, louvres, sun shading, fencing, privacy screens, services equipment and wintergardens are for illustrative purposes only and are not to be relied on as a representative of the final product. All level changes in the courtyards may not be shown.



LEVEL 6

HIGH FOREST

APARTMENTS

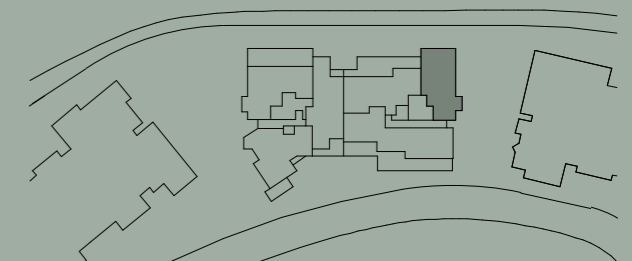
Apartment No. 718 Building BLUEGUM Lot No. 54

Colour Scheme
SUMMER

2 BEDROOM + STUDY APARTMENT

Internal Area 94 m²
Balcony Area 17 m²
Total Area 111 m²

Areas subject to change in accordance with the provisions of the contract. Area includes balcony and/or terrace where applicable. It excludes associated parking and external storage areas.

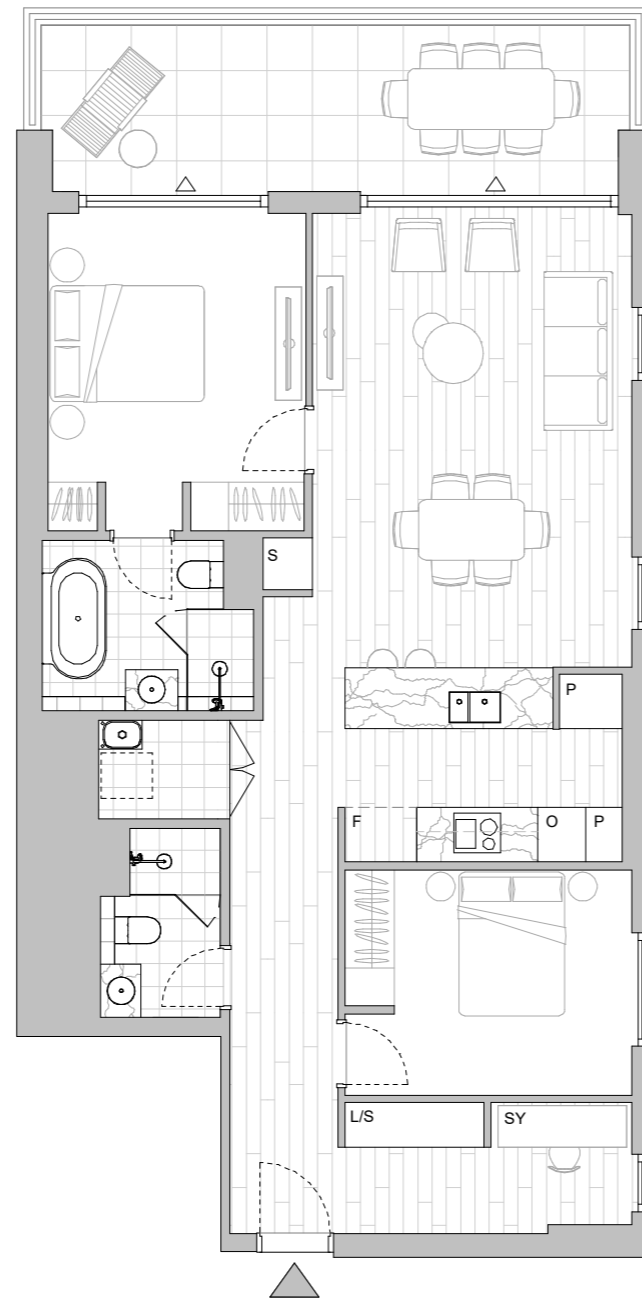


LEGEND - As Applicable

- | | | |
|----------------|----------------------|--------------------|
| Access | Balcony Access | ** Vertical Screen |
| F Fridge Space | IF Integrated Fridge | SL Skylight |
| P Pantry | S Storage | SY Study |
| O Oven Stack | L Linen | |
| M Media | K King Bed | |



This floor plan was produced prior to construction and while the information contained herein is believed to be correct it is not guaranteed. Changes will undoubtedly be made in accordance with the contract for sale. The plan does not show additional features such as hot water systems, services or bulkheads necessary for services. Dimensions, areas and scale of floor plans are approximate only. Dimensions are measured, and areas are calculated, in accordance with the Australian Property Institute Method of Measurement effective at the date of preparation of the Floor Plan. The furniture and furnishings depicted are not included with any sale. Purchasers must refer to the contract for sale for the list of inclusions. Furnishings should not be taken to indicate the final position of power points, TV connection points and the like. Bed sizes shown are indicative only and not guaranteed. All graphics, including design and extent of tile/paver/carpet areas, landscaping, balustrades, louvres, sun shading, fencing, privacy screens, services equipment and wintergardens are for illustrative purposes only and are not to be relied on as a representative of the final product. All level changes in the courtyards may not be shown.



LEVEL 7