

# HIGH FOREST

## APARTMENTS

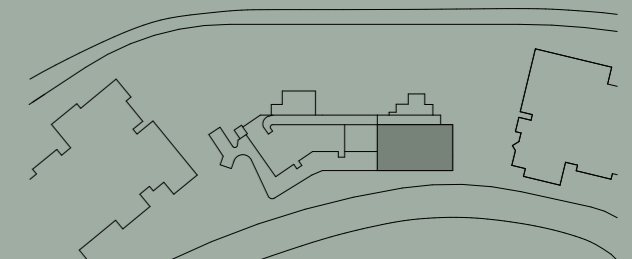
Apartment No. G08 Building BLUEGUM Lot No. 01

Colour Scheme  
SUMMER

### 3 BEDROOM + MEDIA APARTMENT

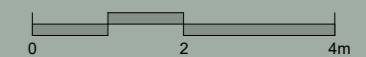
Internal Area 123 m<sup>2</sup>  
Balcony Area 40 m<sup>2</sup>  
Total Area 163 m<sup>2</sup>

Areas subject to change in accordance with the provisions of the contract. Area includes balcony and/or terrace where applicable. It excludes associated parking and external storage areas.



#### LEGEND - As Applicable

▲ Access	△ Balcony Access	** Vertical Screen
F Fridge Space	IF Integrated Fridge	SL Skylight
P Pantry	S Storage	SY Study
O Oven Stack	L Linen	
M Media	K King Bed	



This floor plan was produced prior to construction and while the information contained herein is believed to be correct it is not guaranteed. Changes will undoubtedly be made in accordance with the contract for sale. The plan does not show additional features such as hot water systems, services or bulkheads necessary for services. Dimensions, areas and scale of floor plans are approximate only. Dimensions are measured, and areas are calculated, in accordance with the Australian Property Institute Method of Measurement effective at the date of preparation of the Floor Plan. The furniture and furnishings depicted are not included with any sale. Purchasers must refer to the contract for sale for the list of inclusions. Furnishings should not be taken to indicate the final position of power points, TV connection points and the like. Bed sizes shown are indicative only and not guaranteed. All graphics, including design and extent of tile/paver/carpet areas, landscaping, balustrades, louvres, sun shading, fencing, privacy screens, services equipment and wintergardens are for illustrative purposes only and are not to be relied on as a representative of the final product. All level changes in the courtyards may not be shown.



GROUND LEVEL



LEVEL 1

Apartment No. 116 Building BLUEGUM Lot No. 02

Colour Scheme SUMMER

### 3 BEDROOM + STUDY APARTMENT

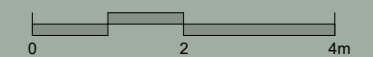
Internal Area 122 m<sup>2</sup>  
Balcony Area 17 m<sup>2</sup>  
Total Area 139 m<sup>2</sup>

Areas subject to change in accordance with the provisions of the contract. Area includes balcony and/or terrace where applicable. It excludes associated parking and external storage areas.



#### LEGEND - As Applicable

- |                |                      |                    |
|----------------|----------------------|--------------------|
| ▲ Access       | △ Balcony Access     | ** Vertical Screen |
| F Fridge Space | IF Integrated Fridge | SL Skylight        |
| P Pantry       | S Storage            | SY Study           |
| O Oven Stack   | L Linen              |                    |
| M Media        | K King Bed           |                    |



This floor plan was produced prior to construction and while the information contained herein is believed to be correct it is not guaranteed. Changes will undoubtedly be made in accordance with the contract for sale. The plan does not show additional features such as hot water systems, services or bulkheads necessary for services. Dimensions, areas and scale of floor plans are approximate only. Dimensions are measured, and areas are calculated, in accordance with the Australian Property Institute Method of Measurement effective at the date of preparation of the Floor Plan. The furniture and furnishings depicted are not included with any sale. Purchasers must refer to the contract for sale for the list of inclusions. Furnishings should not be taken to indicate the final position of power points, TV connection points and the like. Bed sizes shown are indicative only and not guaranteed. All graphics, including design and extent of tile/paver/carpet areas, landscaping, balustrades, louvres, sun shading, fencing, privacy screens, services equipment and wintergardens are for illustrative purposes only and are not to be relied on as a representative of the final product. All level changes in the courtyards may not be shown.

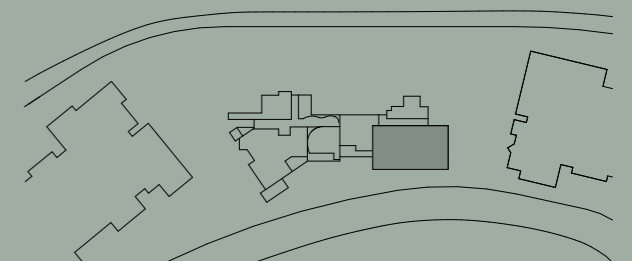
Apartment No. Building Lot No.  
118 BLUEGUM 04

Colour Scheme  
AUTUMN - Kitchen  
SUMMER - Bathroom

### 3 BEDROOM + MEDIA APARTMENT

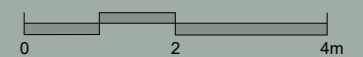
Internal Area 123 m<sup>2</sup>  
Balcony Area 26 m<sup>2</sup>  
Total Area 149 m<sup>2</sup>

Areas subject to change in accordance with the provisions of the contract. Area includes balcony and/or terrace where applicable. It excludes associated parking and external storage areas.



#### LEGEND - As Applicable

Access	Balcony Access	** Vertical Screen
F Fridge Space	IF Integrated Fridge	SL Skylight
P Pantry	S Storage	SY Study
O Oven Stack	L Linen	
M Media	K King Bed	



This floor plan was produced prior to construction and while the information contained herein is believed to be correct it is not guaranteed. Changes will undoubtedly be made in accordance with the contract for sale. The plan does not show additional features such as hot water systems, services or bulkheads necessary for services. Dimensions, areas and scale of floor plans are approximate only. Dimensions are measured, and areas are calculated, in accordance with the Australian Property Institute Method of Measurement effective at the date of preparation of the Floor Plan. The furniture and furnishings depicted are not included with any sale. Purchasers must refer to the contract for sale for the list of inclusions. Furnishings should not be taken to indicate the final position of power points, TV connection points and the like. Bed sizes shown are indicative only and not guaranteed. All graphics, including design and extent of tile/paver/carpet areas, landscaping, balustrades, louvres, sun shading, fencing, privacy screens, services equipment and wintergardens are for illustrative purposes only and are not to be relied on as a representative of the final product. All level changes in the courtyards may not be shown.



LEVEL 1



LEVEL 2

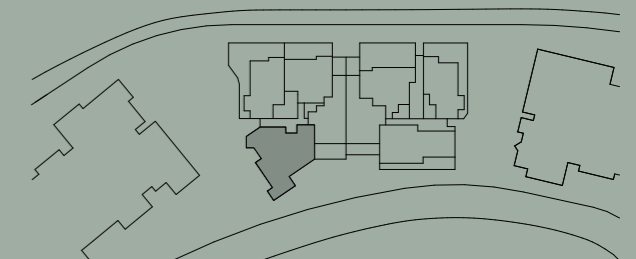
Apartment No.	Building	Lot No.
221	BLUEGUM	05

Colour Scheme  
 AUTUMN - Kitchen  
 SUMMER - Bathroom

### 3 BEDROOM + STUDY APARTMENT

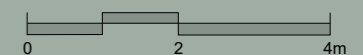
Internal Area	122 m <sup>2</sup>
Balcony Area	24 m <sup>2</sup>
Total Area	146 m <sup>2</sup>

Areas subject to change in accordance with the provisions of the contract. Area includes balcony and/or terrace where applicable. It excludes associated parking and external storage areas.



#### LEGEND - As Applicable

- |                |                      |                    |
|----------------|----------------------|--------------------|
| Access         | Balcony Access       | ** Vertical Screen |
| F Fridge Space | IF Integrated Fridge | SL Skylight        |
| P Pantry       | S Storage            | SY Study           |
| O Oven Stack   | L Linen              |                    |
| M Media        | K King Bed           |                    |



This floor plan was produced prior to construction and while the information contained herein is believed to be correct it is not guaranteed. Changes will undoubtedly be made in accordance with the contract for sale. The plan does not show additional features such as hot water systems, services or bulkheads necessary for services. Dimensions, areas and scale of floor plans are approximate only. Dimensions are measured, and areas are calculated, in accordance with the Australian Property Institute Method of Measurement effective at the date of preparation of the Floor Plan. The furniture and furnishings depicted are not included with any sale. Purchasers must refer to the contract for sale for the list of inclusions. Furnishings should not be taken to indicate the final position of power points, TV connection points and the like. Bed sizes shown are indicative only and not guaranteed. All graphics, including design and extent of tile/paver/carpet areas, landscaping, balustrades, louvres, sun shading, fencing, privacy screens, services equipment and wintergardens are for illustrative purposes only and are not to be relied on as a representative of the final product. All level changes in the courtyards may not be shown.

# HIGH FOREST

## APARTMENTS

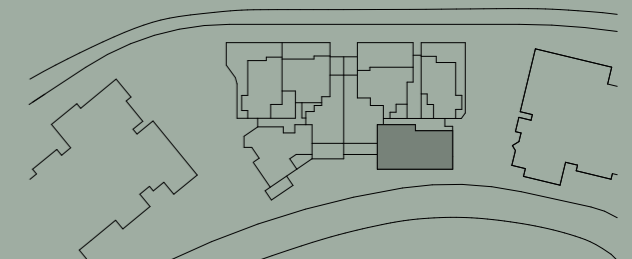
Apartment No. 225 Building BLUEGUM Lot No. 09

Colour Scheme  
SUMMER

### 3 BEDROOM + MEDIA APARTMENT

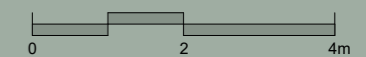
Internal Area 123 m<sup>2</sup>  
Balcony Area 28 m<sup>2</sup>  
Total Area 151 m<sup>2</sup>

Areas subject to change in accordance with the provisions of the contract. Area includes balcony and/or terrace where applicable. It excludes associated parking and external storage areas.



#### LEGEND - As Applicable

▲ Access	△ Balcony Access	** Vertical Screen
F Fridge Space	IF Integrated Fridge	SL Skylight
P Pantry	S Storage	SY Study
O Oven Stack	L Linen	
M Media	K King Bed	



This floor plan was produced prior to construction and while the information contained herein is believed to be correct it is not guaranteed. Changes will undoubtedly be made in accordance with the contract for sale. The plan does not show additional features such as hot water systems, services or bulkheads necessary for services. Dimensions, areas and scale of floor plans are approximate only. Dimensions are measured, and areas are calculated, in accordance with the Australian Property Institute Method of Measurement effective at the date of preparation of the Floor Plan. The furniture and furnishings depicted are not included with any sale. Purchasers must refer to the contract for sale for the list of inclusions. Furnishings should not be taken to indicate the final position of power points, TV connection points and the like. Bed sizes shown are indicative only and not guaranteed. All graphics, including design and extent of tile/paver/carpet areas, landscaping, balustrades, louvres, sun shading, fencing, privacy screens, services equipment and wintergardens are for illustrative purposes only and are not to be relied on as a representative of the final product. All level changes in the courtyards may not be shown.



LEVEL 2

# HIGH FOREST

## APARTMENTS



LEVEL 3

Apartment No. 321 Building BLUEGUM Lot No. 13

Colour Scheme SUMMER

### 3 BEDROOM + STUDY APARTMENT

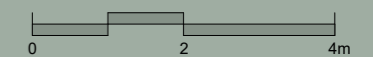
Internal Area 122 m<sup>2</sup>  
Balcony Area 16 m<sup>2</sup>  
Total Area 138 m<sup>2</sup>

Areas subject to change in accordance with the provisions of the contract. Area includes balcony and/or terrace where applicable. It excludes associated parking and external storage areas.



#### LEGEND - As Applicable

- |                |                      |                    |
|----------------|----------------------|--------------------|
| ▲ Access       | △ Balcony Access     | ** Vertical Screen |
| F Fridge Space | IF Integrated Fridge | SL Skylight        |
| P Pantry       | S Storage            | SY Study           |
| O Oven Stack   | L Linen              |                    |
| M Media        | K King Bed           |                    |



This floor plan was produced prior to construction and while the information contained herein is believed to be correct it is not guaranteed. Changes will undoubtedly be made in accordance with the contract for sale. The plan does not show additional features such as hot water systems, services or bulkheads necessary for services. Dimensions, areas and scale of floor plans are approximate only. Dimensions are measured, and areas are calculated, in accordance with the Australian Property Institute Method of Measurement effective at the date of preparation of the Floor Plan. The furniture and furnishings depicted are not included with any sale. Purchasers must refer to the contract for sale for the list of inclusions. Furnishings should not be taken to indicate the final position of power points, TV connection points and the like. Bed sizes shown are indicative only and not guaranteed. All graphics, including design and extent of tile/paver/carpet areas, landscaping, balustrades, louvres, sun shading, fencing, privacy screens, services equipment and wintergardens are for illustrative purposes only and are not to be relied on as a representative of the final product. All level changes in the courtyards may not be shown.

Apartment No. Building Lot No.  
325 BLUEGUM 17

Colour Scheme  
AUTUMN - Kitchen  
SUMMER - Bathroom

### 3 BEDROOM + MEDIA APARTMENT

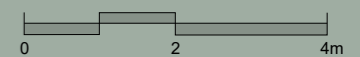
Internal Area 123 m<sup>2</sup>  
Balcony Area 16 m<sup>2</sup>  
Total Area 139 m<sup>2</sup>

Areas subject to change in accordance with the provisions of the contract. Area includes balcony and/or terrace where applicable. It excludes associated parking and external storage areas.



#### LEGEND - As Applicable

Access	Balcony Access	** Vertical Screen
F Fridge Space	IF Integrated Fridge	SL Skylight
P Pantry	S Storage	SY Study
O Oven Stack	L Linen	
M Media	K King Bed	



This floor plan was produced prior to construction and while the information contained herein is believed to be correct it is not guaranteed. Changes will undoubtedly be made in accordance with the contract for sale. The plan does not show additional features such as hot water systems, services or bulkheads necessary for services. Dimensions, areas and scale of floor plans are approximate only. Dimensions are measured, and areas are calculated, in accordance with the Australian Property Institute Method of Measurement effective at the date of preparation of the Floor Plan. The furniture and furnishings depicted are not included with any sale. Purchasers must refer to the contract for sale for the list of inclusions. Furnishings should not be taken to indicate the final position of power points, TV connection points and the like. Bed sizes shown are indicative only and not guaranteed. All graphics, including design and extent of tile/paver/carpet areas, landscaping, balustrades, louvres, sun shading, fencing, privacy screens, services equipment and wintergardens are for illustrative purposes only and are not to be relied on as a representative of the final product. All level changes in the courtyards may not be shown.



LEVEL 3



LEVEL 4

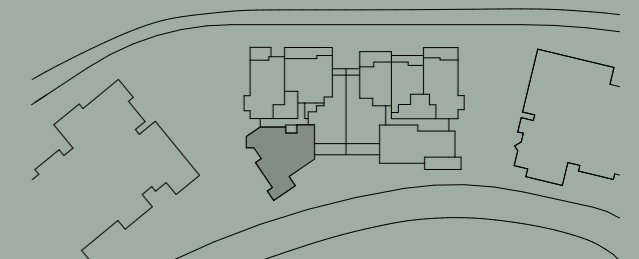
Apartment No.	Building	Lot No.
421	BLUEGUM	22

Colour Scheme  
 AUTUMN - Kitchen  
 SUMMER - Bathroom

### 3 BEDROOM + STUDY APARTMENT

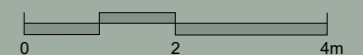
Internal Area	122 m <sup>2</sup>
Balcony Area	15 m <sup>2</sup>
Total Area	137 m <sup>2</sup>

Areas subject to change in accordance with the provisions of the contract. Area includes balcony and/or terrace where applicable. It excludes associated parking and external storage areas.



#### LEGEND - As Applicable

△ Access	△ Balcony Access	** Vertical Screen
F Fridge Space	IF Integrated Fridge	SL Skylight
P Pantry	S Storage	SY Study
O Oven Stack	L Linen	
M Media	K King Bed	



This floor plan was produced prior to construction and while the information contained herein is believed to be correct it is not guaranteed. Changes will undoubtedly be made in accordance with the contract for sale. The plan does not show additional features such as hot water systems, services or bulkheads necessary for services. Dimensions, areas and scale of floor plans are approximate only. Dimensions are measured, and areas are calculated, in accordance with the Australian Property Institute Method of Measurement effective at the date of preparation of the Floor Plan. The furniture and furnishings depicted are not included with any sale. Purchasers must refer to the contract for sale for the list of inclusions. Furnishings should not be taken to indicate the final position of power points, TV connection points and the like. Bed sizes shown are indicative only and not guaranteed. All graphics, including design and extent of tile/paver/carpet areas, landscaping, balustrades, louvres, sun shading, fencing, privacy screens, services equipment and wintergardens are for illustrative purposes only and are not to be relied on as a representative of the final product. All level changes in the courtyards may not be shown.

# HIGHFOREST

## APARTMENTS

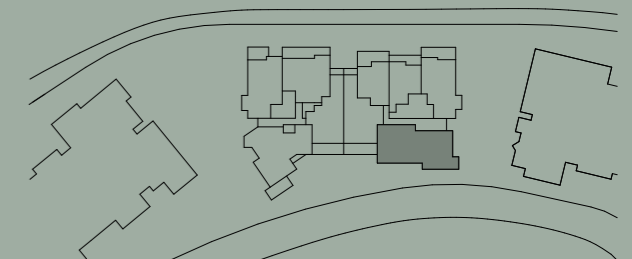
Apartment No. 425    Building BLUEGUM    Lot No. 26

Colour Scheme  
SUMMER

### 3 BEDROOM + MEDIA APARTMENT

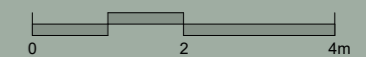
Internal Area 123 m<sup>2</sup>  
Balcony Area 16 m<sup>2</sup>  
Total Area 139 m<sup>2</sup>

Areas subject to change in accordance with the provisions of the contract. Area includes balcony and/or terrace where applicable. It excludes associated parking and external storage areas.



#### LEGEND - As Applicable

Access	Balcony Access	** Vertical Screen
F Fridge Space	IF Integrated Fridge	SL Skylight
P Pantry	S Storage	SY Study
O Oven Stack	L Linen	
M Media	K King Bed	



This floor plan was produced prior to construction and while the information contained herein is believed to be correct it is not guaranteed. Changes will undoubtedly be made in accordance with the contract for sale. The plan does not show additional features such as hot water systems, services or bulkheads necessary for services. Dimensions, areas and scale of floor plans are approximate only. Dimensions are measured, and areas are calculated, in accordance with the Australian Property Institute Method of Measurement effective at the date of preparation of the Floor Plan. The furniture and furnishings depicted are not included with any sale. Purchasers must refer to the contract for sale for the list of inclusions. Furnishings should not be taken to indicate the final position of power points, TV connection points and the like. Bed sizes shown are indicative only and not guaranteed. All graphics, including design and extent of tile/paver/carpet areas, landscaping, balustrades, louvres, sun shading, fencing, privacy screens, services equipment and wintergardens are for illustrative purposes only and are not to be relied on as a representative of the final product. All level changes in the courtyards may not be shown.



LEVEL 4

# HIGH FOREST

## APARTMENTS

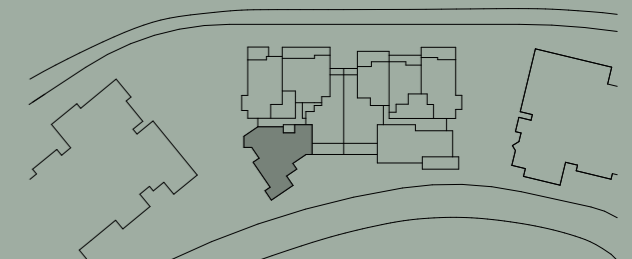
Apartment No. 521 Building BLUEGUM Lot No. 31

Colour Scheme  
SUMMER

### 3 BEDROOM + STUDY APARTMENT

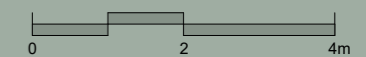
Internal Area 122 m<sup>2</sup>  
Balcony Area 17 m<sup>2</sup>  
Total Area 139 m<sup>2</sup>

Areas subject to change in accordance with the provisions of the contract. Area includes balcony and/or terrace where applicable. It excludes associated parking and external storage areas.



#### LEGEND - As Applicable

Access	Balcony Access	Vertical Screen
F Fridge Space	IF Integrated Fridge	SL Skylight
P Pantry	S Storage	SY Study
O Oven Stack	L Linen	
M Media	K King Bed	



This floor plan was produced prior to construction and while the information contained herein is believed to be correct it is not guaranteed. Changes will undoubtedly be made in accordance with the contract for sale. The plan does not show additional features such as hot water systems, services or bulkheads necessary for services. Dimensions, areas and scale of floor plans are approximate only. Dimensions are measured, and areas are calculated, in accordance with the Australian Property Institute Method of Measurement effective at the date of preparation of the Floor Plan. The furniture and furnishings depicted are not included with any sale. Purchasers must refer to the contract for sale for the list of inclusions. Furnishings should not be taken to indicate the final position of power points, TV connection points and the like. Bed sizes shown are indicative only and not guaranteed. All graphics, including design and extent of tile/paver/carpet areas, landscaping, balustrades, louvres, sun shading, fencing, privacy screens, services equipment and wintergardens are for illustrative purposes only and are not to be relied on as a representative of the final product. All level changes in the courtyards may not be shown.



LEVEL 5

Apartment No. Building Lot No.  
525 BLUEGUM 35

Colour Scheme  
AUTUMN - Kitchen  
SUMMER - Bathroom

### 3 BEDROOM + MEDIA APARTMENT

Internal Area 123 m<sup>2</sup>  
Balcony Area 16 m<sup>2</sup>  
Total Area 139 m<sup>2</sup>

Areas subject to change in accordance with the provisions of the contract. Area includes balcony and/or terrace where applicable. It excludes associated parking and external storage areas.



#### LEGEND - As Applicable

Access	Balcony Access	Vertical Screen
F Fridge Space	IF Integrated Fridge	SL Skylight
P Pantry	S Storage	SY Study
O Oven Stack	L Linen	
M Media	K King Bed	



This floor plan was produced prior to construction and while the information contained herein is believed to be correct it is not guaranteed. Changes will undoubtedly be made in accordance with the contract for sale. The plan does not show additional features such as hot water systems, services or bulkheads necessary for services. Dimensions, areas and scale of floor plans are approximate only. Dimensions are measured, and areas are calculated, in accordance with the Australian Property Institute Method of Measurement effective at the date of preparation of the Floor Plan. The furniture and furnishings depicted are not included with any sale. Purchasers must refer to the contract for sale for the list of inclusions. Furnishings should not be taken to indicate the final position of power points, TV connection points and the like. Bed sizes shown are indicative only and not guaranteed. All graphics, including design and extent of tile/paver/carpet areas, landscaping, balustrades, louvres, sun shading, fencing, privacy screens, services equipment and wintergardens are for illustrative purposes only and are not to be relied on as a representative of the final product. All level changes in the courtyards may not be shown.



LEVEL 5

# HIGH FOREST

## APARTMENTS

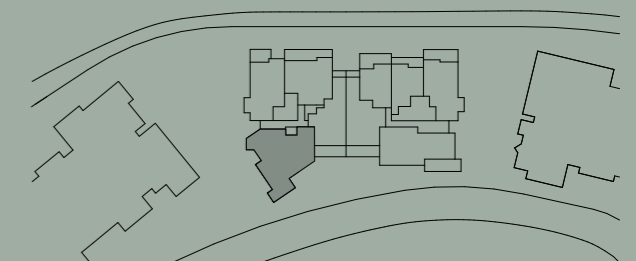
Apartment No. Building Lot No.  
614 BLUEGUM 40

Colour Scheme  
AUTUMN - Kitchen  
SUMMER - Bathroom

### 3 BEDROOM + STUDY APARTMENT

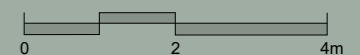
Internal Area 122 m<sup>2</sup>  
Balcony Area 17 m<sup>2</sup>  
Total Area 139 m<sup>2</sup>

Areas subject to change in accordance with the provisions of the contract. Area includes balcony and/or terrace where applicable. It excludes associated parking and external storage areas.



#### LEGEND - As Applicable

Access	Balcony Access	Vertical Screen
F Fridge Space	IF Integrated Fridge	SL Skylight
P Pantry	S Storage	SY Study
O Oven Stack	L Linen	
M Media	K King Bed	



This floor plan was produced prior to construction and while the information contained herein is believed to be correct it is not guaranteed. Changes will undoubtedly be made in accordance with the contract for sale. The plan does not show additional features such as hot water systems, services or bulkheads necessary for services. Dimensions, areas and scale of floor plans are approximate only. Dimensions are measured, and areas are calculated, in accordance with the Australian Property Institute Method of Measurement effective at the date of preparation of the Floor Plan. The furniture and furnishings depicted are not included with any sale. Purchasers must refer to the contract for sale for the list of inclusions. Furnishings should not be taken to indicate the final position of power points, TV connection points and the like. Bed sizes shown are indicative only and not guaranteed. All graphics, including design and extent of tile/paver/carpet areas, landscaping, balustrades, louvres, sun shading, fencing, privacy screens, services equipment and wintergardens are for illustrative purposes only and are not to be relied on as a representative of the final product. All level changes in the courtyards may not be shown.



LEVEL 6

# HIGH FOREST

## APARTMENTS

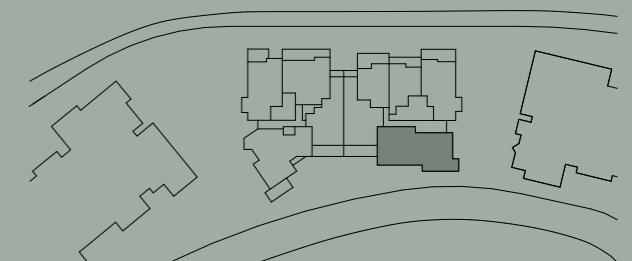
Apartment No. 618 Building BLUEGUM Lot No. 44

Colour Scheme  
SUMMER

### 3 BEDROOM + MEDIA APARTMENT

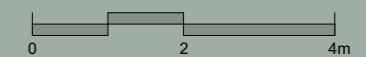
Internal Area 123 m<sup>2</sup>  
Balcony Area 16 m<sup>2</sup>  
Total Area 139 m<sup>2</sup>

Areas subject to change in accordance with the provisions of the contract. Area includes balcony and/or terrace where applicable. It excludes associated parking and external storage areas.



#### LEGEND - As Applicable

Access	Balcony Access	Vertical Screen
F Fridge Space	IF Integrated Fridge	SL Skylight
P Pantry	S Storage	SY Study
O Oven Stack	L Linen	
M Media	K King Bed	



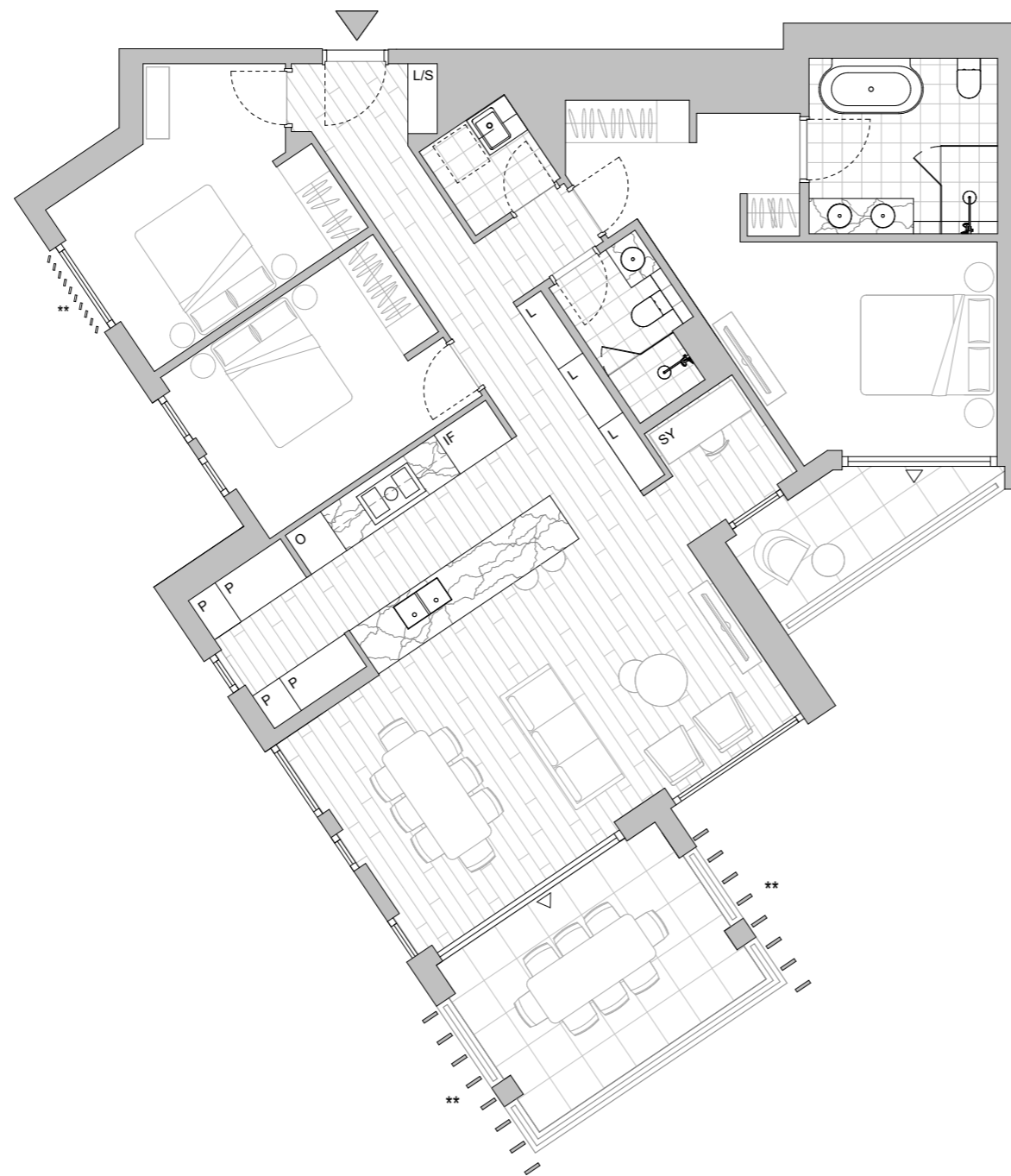
This floor plan was produced prior to construction and while the information contained herein is believed to be correct it is not guaranteed. Changes will undoubtedly be made in accordance with the contract for sale. The plan does not show additional features such as hot water systems, services or bulkheads necessary for services. Dimensions, areas and scale of floor plans are approximate only. Dimensions are measured, and areas are calculated, in accordance with the Australian Property Institute Method of Measurement effective at the date of preparation of the Floor Plan. The furniture and furnishings depicted are not included with any sale. Purchasers must refer to the contract for sale for the list of inclusions. Furnishings should not be taken to indicate the final position of power points, TV connection points and the like. Bed sizes shown are indicative only and not guaranteed. All graphics, including design and extent of tile/paver/carpet areas, landscaping, balustrades, louvres, sun shading, fencing, privacy screens, services equipment and wintergardens are for illustrative purposes only and are not to be relied on as a representative of the final product. All level changes in the courtyards may not be shown.



LEVEL 6

# HIGH FOREST

## APARTMENTS



LEVEL 7

Apartment No. 713 Building BLUEGUM Lot No. 49

Colour Scheme  
SUMMER

### 3 BEDROOM + STUDY APARTMENT

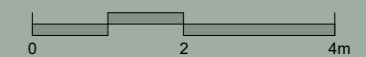
Internal Area 122 m<sup>2</sup>  
Balcony Area 17 m<sup>2</sup>  
Total Area 139 m<sup>2</sup>

Areas subject to change in accordance with the provisions of the contract. Area includes balcony and/or terrace where applicable. It excludes associated parking and external storage areas.



#### LEGEND - As Applicable

- |                |                      |                    |
|----------------|----------------------|--------------------|
| ▲ Access       | △ Balcony Access     | ** Vertical Screen |
| F Fridge Space | IF Integrated Fridge | SL Skylight        |
| P Pantry       | S Storage            | SY Study           |
| O Oven Stack   | L Linen              |                    |
| M Media        | K King Bed           |                    |



This floor plan was produced prior to construction and while the information contained herein is believed to be correct it is not guaranteed. Changes will undoubtedly be made in accordance with the contract for sale. The plan does not show additional features such as hot water systems, services or bulkheads necessary for services. Dimensions, areas and scale of floor plans are approximate only. Dimensions are measured, and areas are calculated, in accordance with the Australian Property Institute Method of Measurement effective at the date of preparation of the Floor Plan. The furniture and furnishings depicted are not included with any sale. Purchasers must refer to the contract for sale for the list of inclusions. Furnishings should not be taken to indicate the final position of power points, TV connection points and the like. Bed sizes shown are indicative only and not guaranteed. All graphics, including design and extent of tile/paver/carpet areas, landscaping, balustrades, louvres, sun shading, fencing, privacy screens, services equipment and wintergardens are for illustrative purposes only and are not to be relied on as a representative of the final product. All level changes in the courtyards may not be shown.

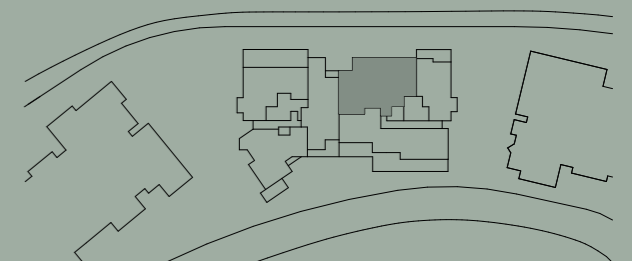
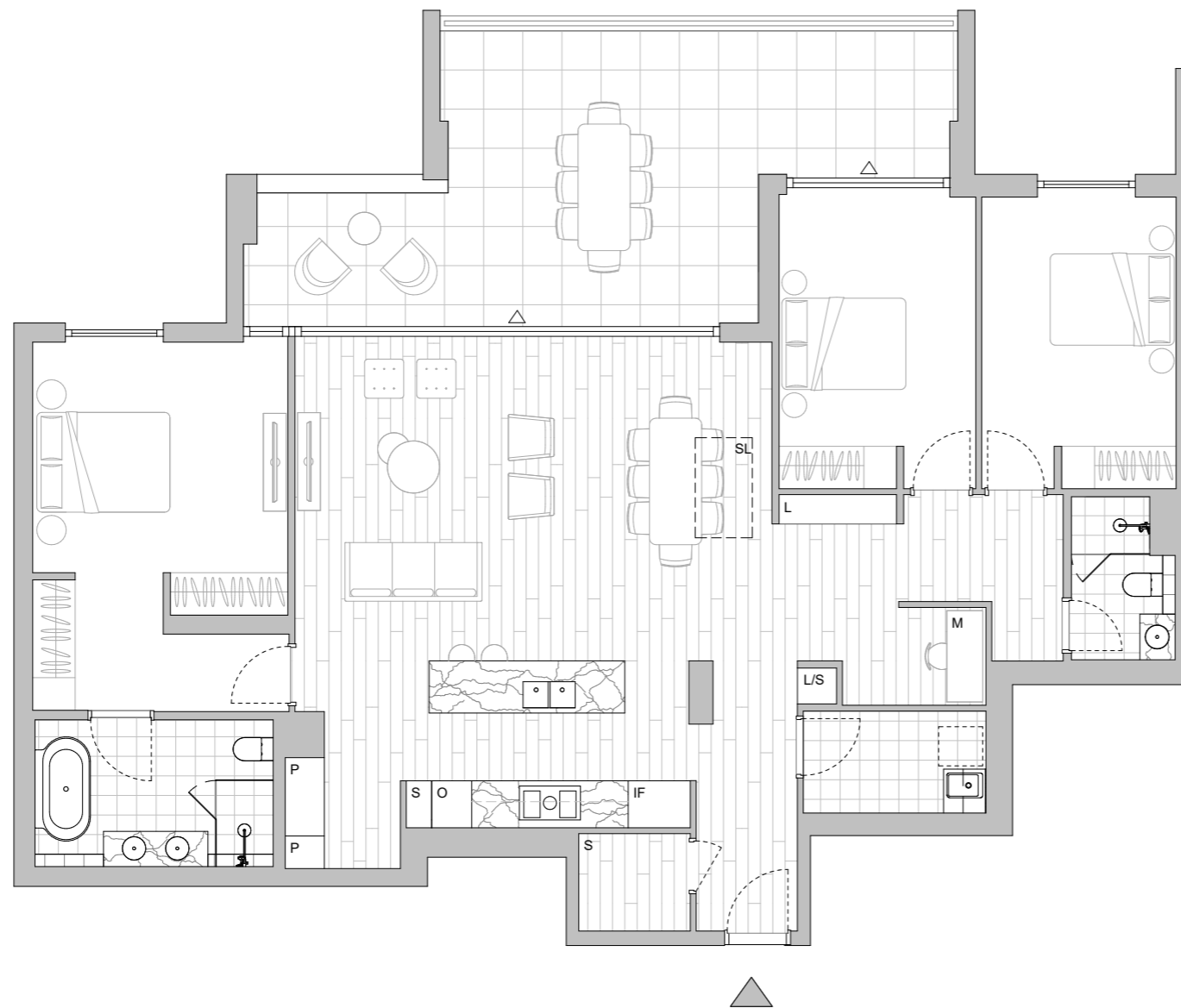
Apartment No. Building Lot No.  
717 BLUEGUM 53

Colour Scheme  
AUTUMN - Kitchen  
SUMMER - Bathroom

### 3 BEDROOM + MEDIA APARTMENT

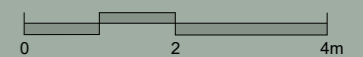
Internal Area 144 m<sup>2</sup>  
Balcony Area 34 m<sup>2</sup>  
Total Area 178 m<sup>2</sup>

Areas subject to change in accordance with the provisions of the contract. Area includes balcony and/or terrace where applicable. It excludes associated parking and external storage areas.



#### LEGEND - As Applicable

△ Access	△ Balcony Access	** Vertical Screen
F Fridge Space	IF Integrated Fridge	SL Skylight
P Pantry	S Storage	SY Study
O Oven Stack	L Linen	
M Media	K King Bed	



LEVEL 7

This floor plan was produced prior to construction and while the information contained herein is believed to be correct it is not guaranteed. Changes will undoubtedly be made in accordance with the contract for sale. The plan does not show additional features such as hot water systems, services or bulkheads necessary for services. Dimensions, areas and scale of floor plans are approximate only. Dimensions are measured, and areas are calculated, in accordance with the Australian Property Institute Method of Measurement effective at the date of preparation of the Floor Plan. The furniture and furnishings depicted are not included with any sale. Purchasers must refer to the contract for sale for the list of inclusions. Furnishings should not be taken to indicate the final position of power points, TV connection points and the like. Bed sizes shown are indicative only and not guaranteed. All graphics, including design and extent of tile/paver/carpet areas, landscaping, balustrades, louvres, sun shading, fencing, privacy screens, services equipment and wintergardens are for illustrative purposes only and are not to be relied on as a representative of the final product. All level changes in the courtyards may not be shown.