

HIGH FOREST

APARTMENTS

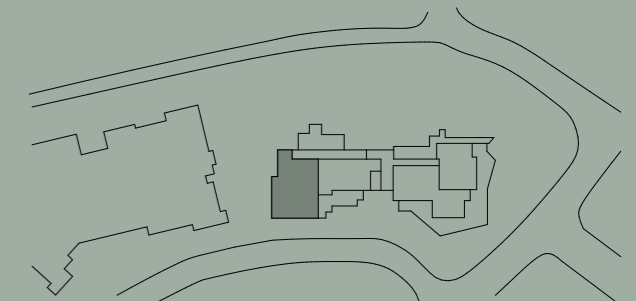
Apartment No. G09 Building EUCALYPT Lot No. 01

Colour Scheme
SUMMER

2 BEDROOM APARTMENT

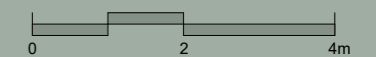
Internal Area 93 m²
Balcony Area 50 m²
Total Area 143 m²

Areas subject to change in accordance with the provisions of the contract. Area includes balcony and/or terrace where applicable. It excludes associated parking and external storage areas.

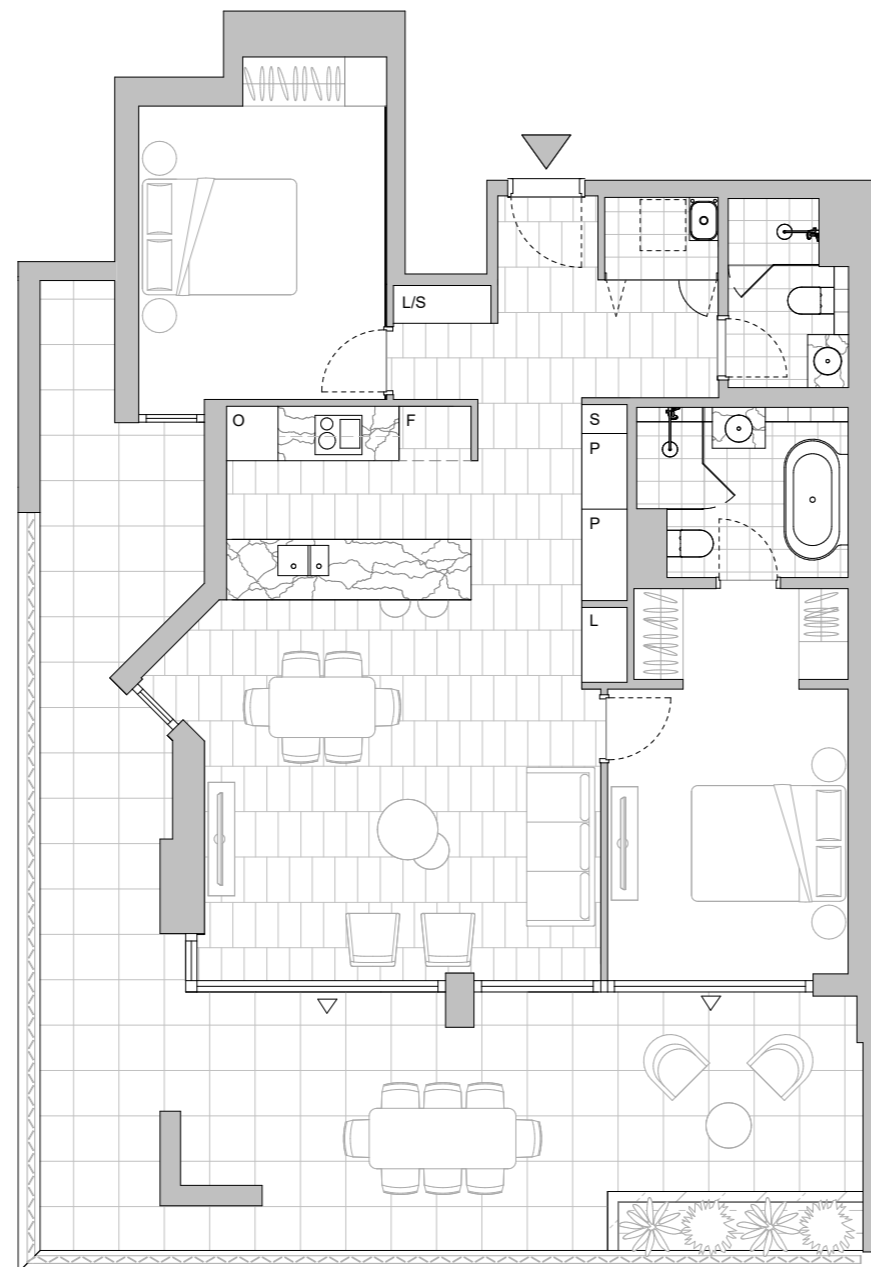


LEGEND - As Applicable

▲ Access	△ Balcony Access	** Vertical Screen
F Fridge Space	IF Integrated Fridge	SL Skylight
P Pantry	S Storage	SY Study
O Oven Stack	L Linen	
M Media	K King Bed	



This floor plan was produced prior to construction and while the information contained herein is believed to be correct it is not guaranteed. Changes will undoubtedly be made in accordance with the contract for sale. The plan does not show additional features such as hot water systems, services or bulkheads necessary for services. Dimensions, areas and scale of floor plans are approximate only. Dimensions are measured, and areas are calculated, in accordance with the Australian Property Institute Method of Measurement effective at the date of preparation of the Floor Plan. The furniture and furnishings depicted are not included with any sale. Purchasers must refer to the contract for sale for the list of inclusions. Furnishings should not be taken to indicate the final position of power points, TV connection points and the like. Bed sizes shown are indicative only and not guaranteed. All graphics, including design and extent of tile/paver/carpet areas, landscaping, balustrades, louvres, sun shading, fencing, privacy screens, services equipment and wintergardens are for illustrative purposes only and are not to be relied on as a representative of the final product. All level changes in the courtyards may not be shown.



GROUND LEVEL

HIGH FOREST

APARTMENTS

Apartment No. G10 Building EUCALYPT Lot No. 02

Colour Scheme
AUTUMN

2 BEDROOM APARTMENT

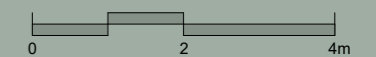
Internal Area 95 m²
Balcony Area 48 m²
Total Area 143 m²

Areas subject to change in accordance with the provisions of the contract. Area includes balcony and/or terrace where applicable. It excludes associated parking and external storage areas.

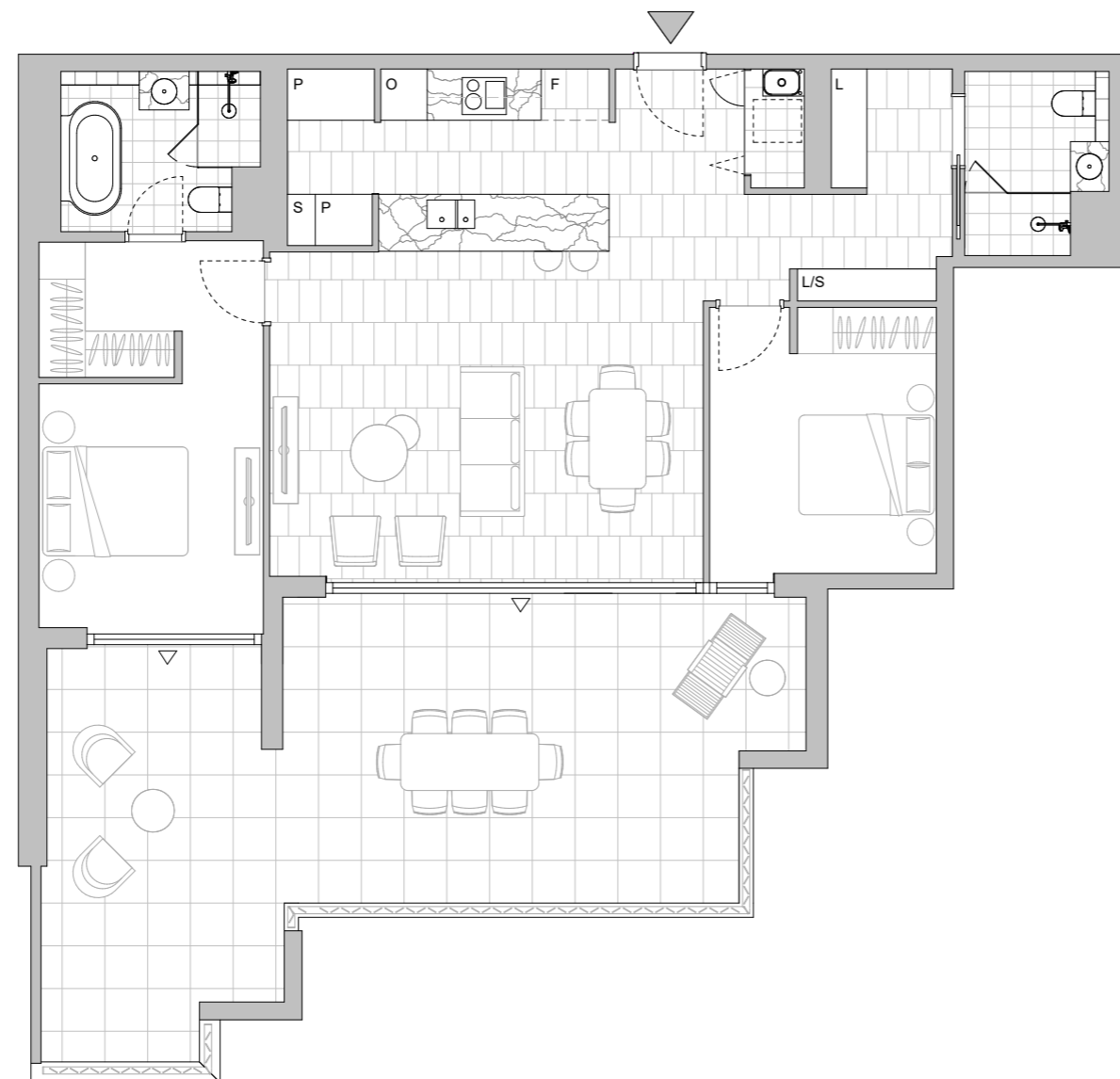


LEGEND - As Applicable

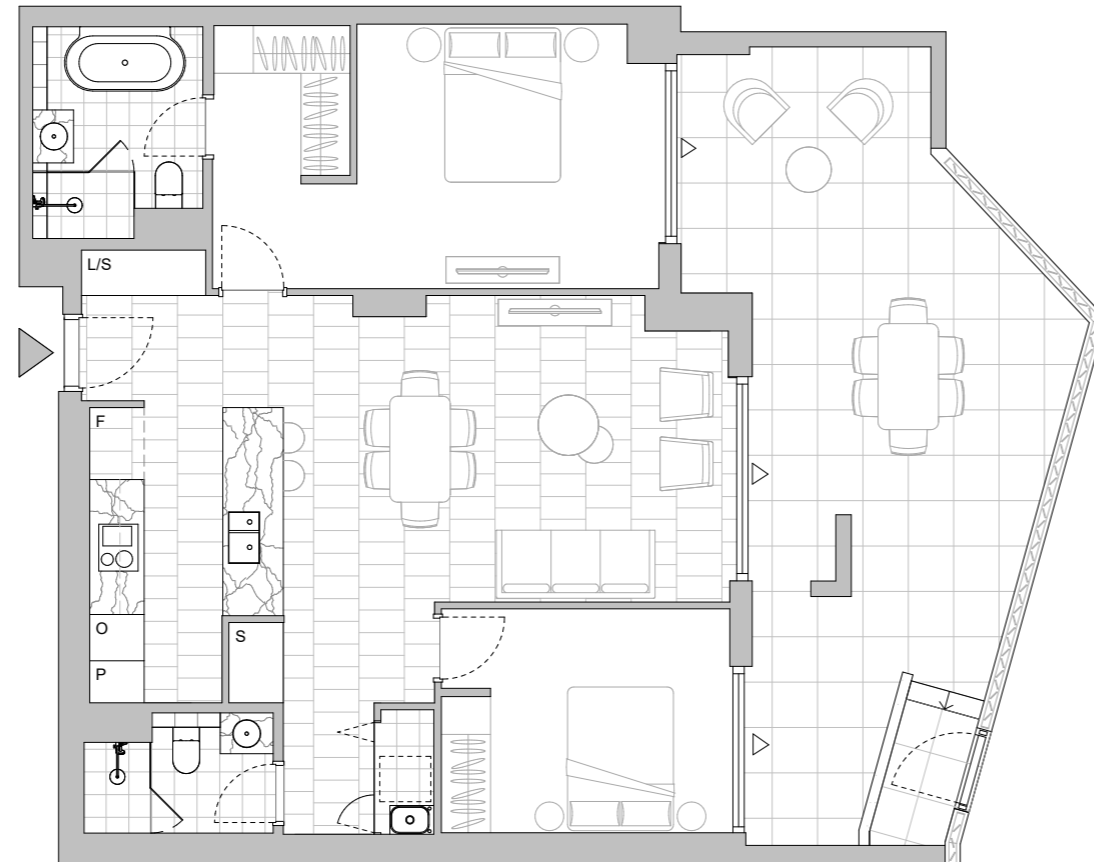
- | | | |
|----------------|----------------------|--------------------|
| ▲ Access | △ Balcony Access | ** Vertical Screen |
| F Fridge Space | IF Integrated Fridge | SL Skylight |
| P Pantry | S Storage | SY Study |
| O Oven Stack | L Linen | |
| M Media | K King Bed | |



This floor plan was produced prior to construction and while the information contained herein is believed to be correct it is not guaranteed. Changes will undoubtedly be made in accordance with the contract for sale. The plan does not show additional features such as hot water systems, services or bulkheads necessary for services. Dimensions, areas and scale of floor plans are approximate only. Dimensions are measured, and areas are calculated, in accordance with the Australian Property Institute Method of Measurement effective at the date of preparation of the Floor Plan. The furniture and furnishings depicted are not included with any sale. Purchasers must refer to the contract for sale for the list of inclusions. Furnishings should not be taken to indicate the final position of power points, TV connection points and the like. Bed sizes shown are indicative only and not guaranteed. All graphics, including design and extent of tile/paver/carpet areas, landscaping, balustrades, louvres, sun shading, fencing, privacy screens, services equipment and wintergardens are for illustrative purposes only and are not to be relied on as a representative of the final product. All level changes in the courtyards may not be shown.



GROUND LEVEL



GROUND LEVEL

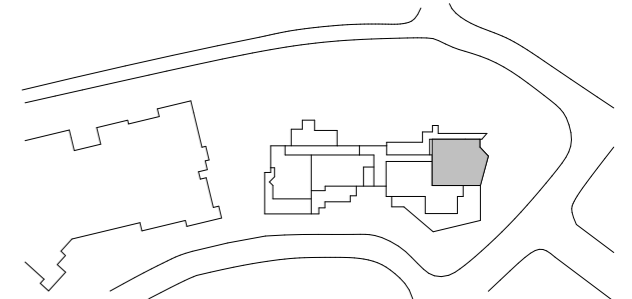
Apartment No. Building Lot No.
G12 EUCALYPT 04

Colour Scheme
AUTUMN

2 BEDROOM APARTMENT

Internal Area 88 m²
Balcony Area 38 m²
Total Area 126 m²

Areas subject to change in accordance with the provisions of the contract. Area includes balcony and/or terrace where applicable. It excludes associated parking and external storage areas.



LEGEND - As Applicable

- | | | |
|----------------|----------------------|--------------------|
| ▲ Access | △ Balcony Access | ** Vertical Screen |
| F Fridge Space | IF Integrated Fridge | SL Skylight |
| P Pantry | S Storage | SY Study |
| O Oven Stack | L Linen | |
| M Media | K King Bed | |



This floor plan was produced prior to construction and while the information contained herein is believed to be correct it is not guaranteed. Changes will undoubtedly be made in accordance with the contract for sale. The plan does not show additional features such as hot water systems, services or bulkheads necessary for services. Dimensions, areas and scale of floor plans are approximate only. Dimensions are measured, and areas are calculated, in accordance with the Australian Property Institute Method of Measurement effective at the date of preparation of the Floor Plan. The furniture and furnishings depicted are not included with any sale. Purchasers must refer to the contract for sale for the list of inclusions. Furnishings should not be taken to indicate the final position of power points, TV connection points and the like. Bed sizes shown are indicative only and not guaranteed. All graphics, including design and extent of tile/paver/carpet areas, landscaping, balustrades, louvres, sun shading, fencing, privacy screens, services equipment and wintergardens are for illustrative purposes only and are not to be relied on as a representative of the final product. All level changes in the courtyards may not be shown.

HIGH FOREST

APARTMENTS

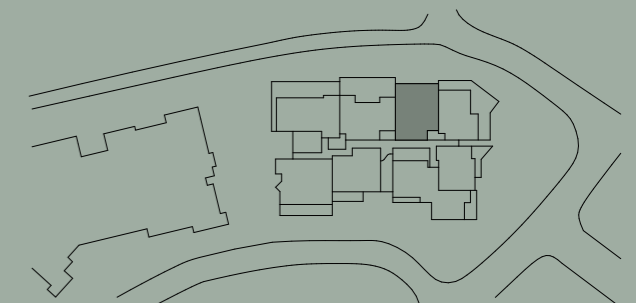
Apartment No. 122 Building EUCALYPT Lot No. 08

Colour Scheme
AUTUMN

2 BEDROOM APARTMENT

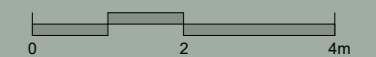
Internal Area 94 m²
Balcony Area 31 m²
Total Area 125 m²

Areas subject to change in accordance with the provisions of the contract. Area includes balcony and/or terrace where applicable. It excludes associated parking and external storage areas.

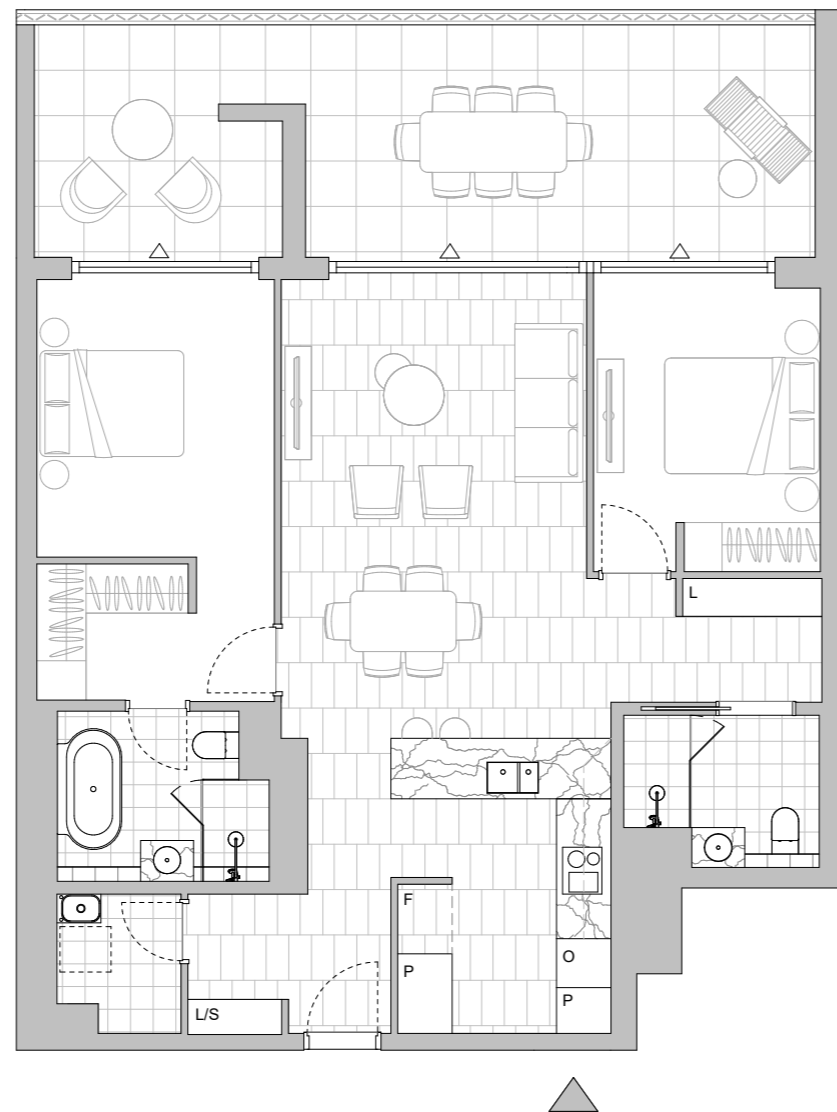


LEGEND - As Applicable

- | | | |
|----------------|----------------------|--------------------|
| ▲ Access | △ Balcony Access | ** Vertical Screen |
| F Fridge Space | IF Integrated Fridge | SL Skylight |
| P Pantry | S Storage | SY Study |
| O Oven Stack | L Linen | |
| M Media | K King Bed | |



This floor plan was produced prior to construction and while the information contained herein is believed to be correct it is not guaranteed. Changes will undoubtedly be made in accordance with the contract for sale. The plan does not show additional features such as hot water systems, services or bulkheads necessary for services. Dimensions, areas and scale of floor plans are approximate only. Dimensions are measured, and areas are calculated, in accordance with the Australian Property Institute Method of Measurement effective at the date of preparation of the Floor Plan. The furniture and furnishings depicted are not included with any sale. Purchasers must refer to the contract for sale for the list of inclusions. Furnishings should not be taken to indicate the final position of power points, TV connection points and the like. Bed sizes shown are indicative only and not guaranteed. All graphics, including design and extent of tile/paver/carpet areas, landscaping, balustrades, louvres, sun shading, fencing, privacy screens, services equipment and wintergardens are for illustrative purposes only and are not to be relied on as a representative of the final product. All level changes in the courtyards may not be shown.



LEVEL 1

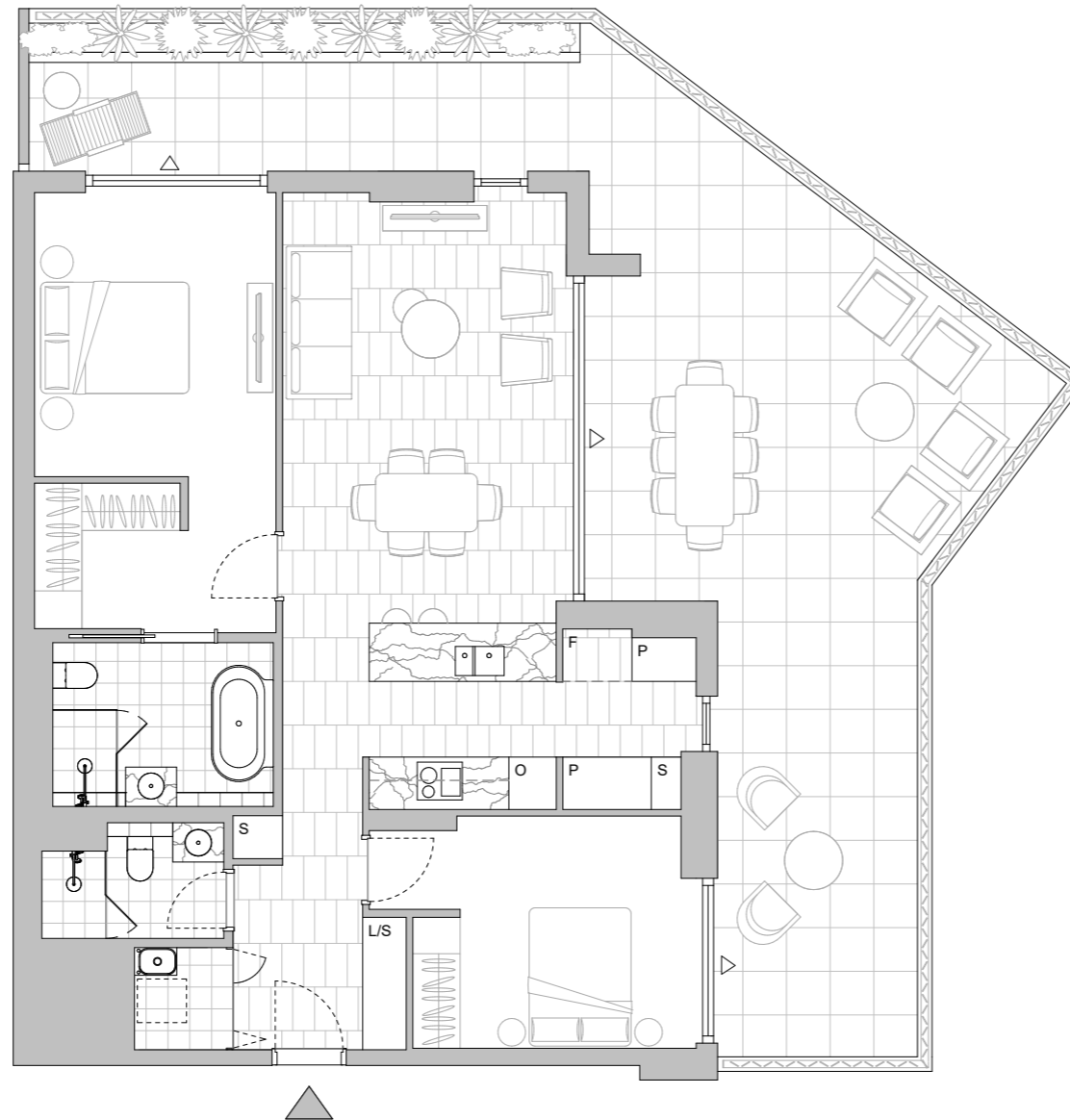
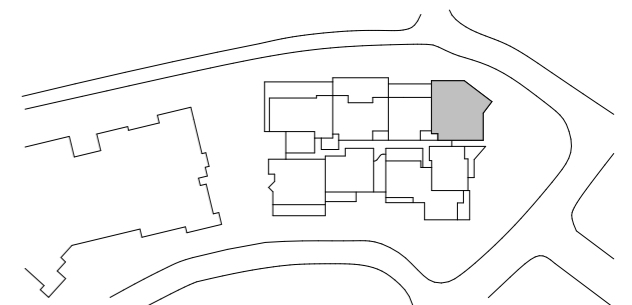
Apartment No. 123 Building EUCALYPT Lot No. 09

Colour Scheme AUTUMN

2 BEDROOM APARTMENT

Internal Area 92 m²
 Balcony Area 64 m²
 Total Area 156 m²

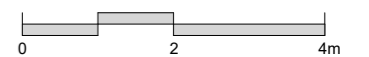
Areas subject to change in accordance with the provisions of the contract. Area includes balcony and/or terrace where applicable. It excludes associated parking and external storage areas.



LEVEL 1

LEGEND - As Applicable

- | | | |
|----------------|----------------------|--------------------|
| ▲ Access | △ Balcony Access | ** Vertical Screen |
| F Fridge Space | IF Integrated Fridge | SL Skylight |
| P Pantry | S Storage | SY Study |
| O Oven Stack | L Linen | |
| M Media | K King Bed | |



This floor plan was produced prior to construction and while the information contained herein is believed to be correct it is not guaranteed. Changes will undoubtedly be made in accordance with the contract for sale. The plan does not show additional features such as hot water systems, services or bulkheads necessary for services. Dimensions, areas and scale of floor plans are approximate only. Dimensions are measured, and areas are calculated, in accordance with the Australian Property Institute Method of Measurement effective at the date of preparation of the Floor Plan. The furniture and furnishings depicted are not included with any sale. Purchasers must refer to the contract for sale for the list of inclusions. Furnishings should not be taken to indicate the final position of power points, TV connection points and the like. Bed sizes shown are indicative only and not guaranteed. All graphics, including design and extent of tile/paver/carpet areas, landscaping, balustrades, louvres, sun shading, fencing, privacy screens, services equipment and wintergardens are for illustrative purposes only and are not to be relied on as a representative of the final product. All level changes in the courtyards may not be shown.

HIGH FOREST

APARTMENTS

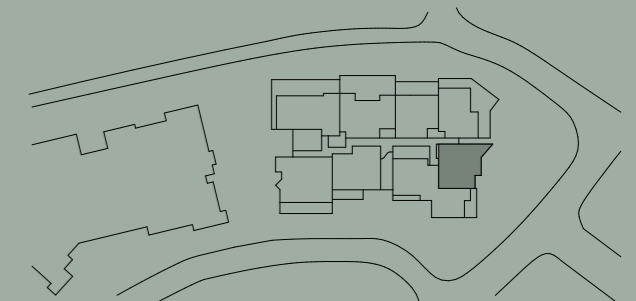
Apartment No. 124 Building EUCALYPT Lot No. 10

Colour Scheme
SUMMER

2 BEDROOM APARTMENT

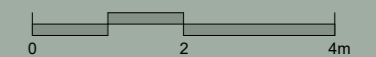
Internal Area 84 m²
Balcony Area 16 m²
Total Area 100 m²

Areas subject to change in accordance with the provisions of the contract. Area includes balcony and/or terrace where applicable. It excludes associated parking and external storage areas.

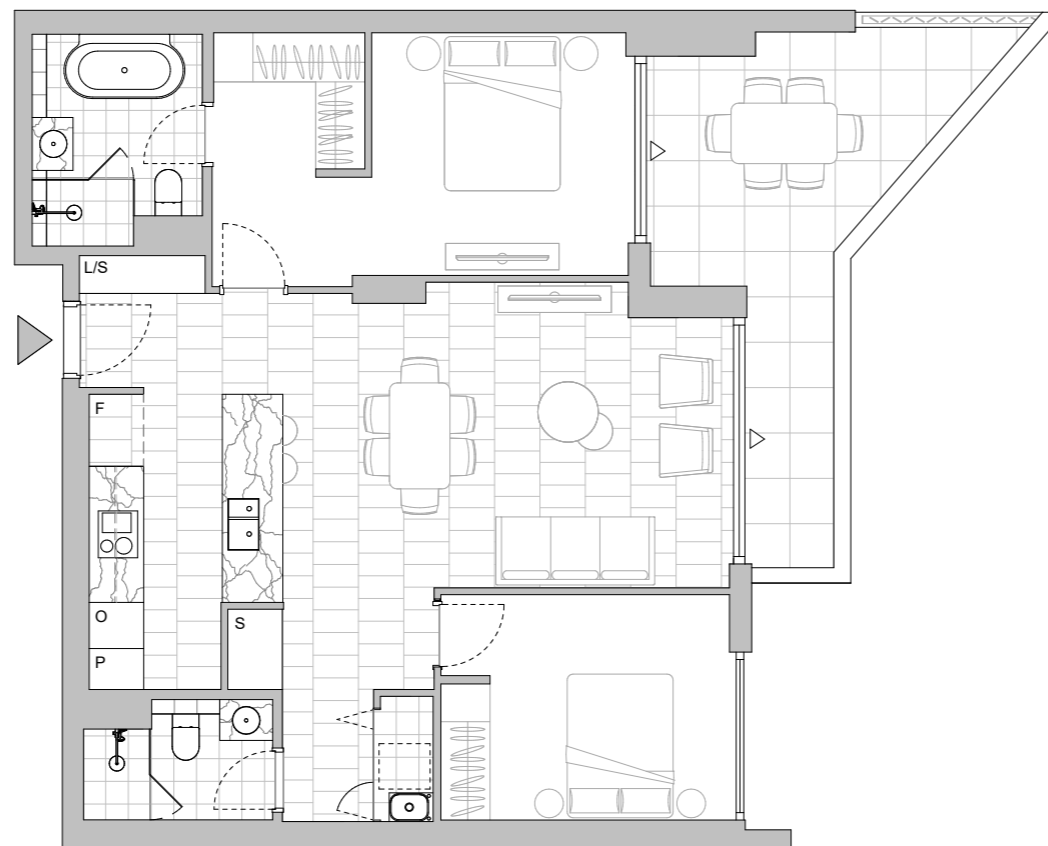


LEGEND - As Applicable

- | | | |
|----------------|----------------------|-----------------|
| Access | Balcony Access | Vertical Screen |
| F Fridge Space | IF Integrated Fridge | SL Skylight |
| P Pantry | S Storage | SY Study |
| O Oven Stack | L Linen | |
| M Media | K King Bed | |



This floor plan was produced prior to construction and while the information contained herein is believed to be correct it is not guaranteed. Changes will undoubtedly be made in accordance with the contract for sale. The plan does not show additional features such as hot water systems, services or bulkheads necessary for services. Dimensions, areas and scale of floor plans are approximate only. Dimensions are measured, and areas are calculated, in accordance with the Australian Property Institute Method of Measurement effective at the date of preparation of the Floor Plan. The furniture and furnishings depicted are not included with any sale. Purchasers must refer to the contract for sale for the list of inclusions. Furnishings should not be taken to indicate the final position of power points, TV connection points and the like. Bed sizes shown are indicative only and not guaranteed. All graphics, including design and extent of tile/paver/carpet areas, landscaping, balustrades, louvres, sun shading, fencing, privacy screens, services equipment and wintergardens are for illustrative purposes only and are not to be relied on as a representative of the final product. All level changes in the courtyards may not be shown.



LEVEL 1

HIGH FOREST

APARTMENTS

Apartment No. 126 Building EUCALYPT Lot No. 12

Colour Scheme
SUMMER

2 BEDROOM + MEDIA APARTMENT

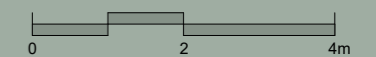
Internal Area 108 m²
Balcony Area 14 m²
Total Area 122 m²

Areas subject to change in accordance with the provisions of the contract. Area includes balcony and/or terrace where applicable. It excludes associated parking and external storage areas.

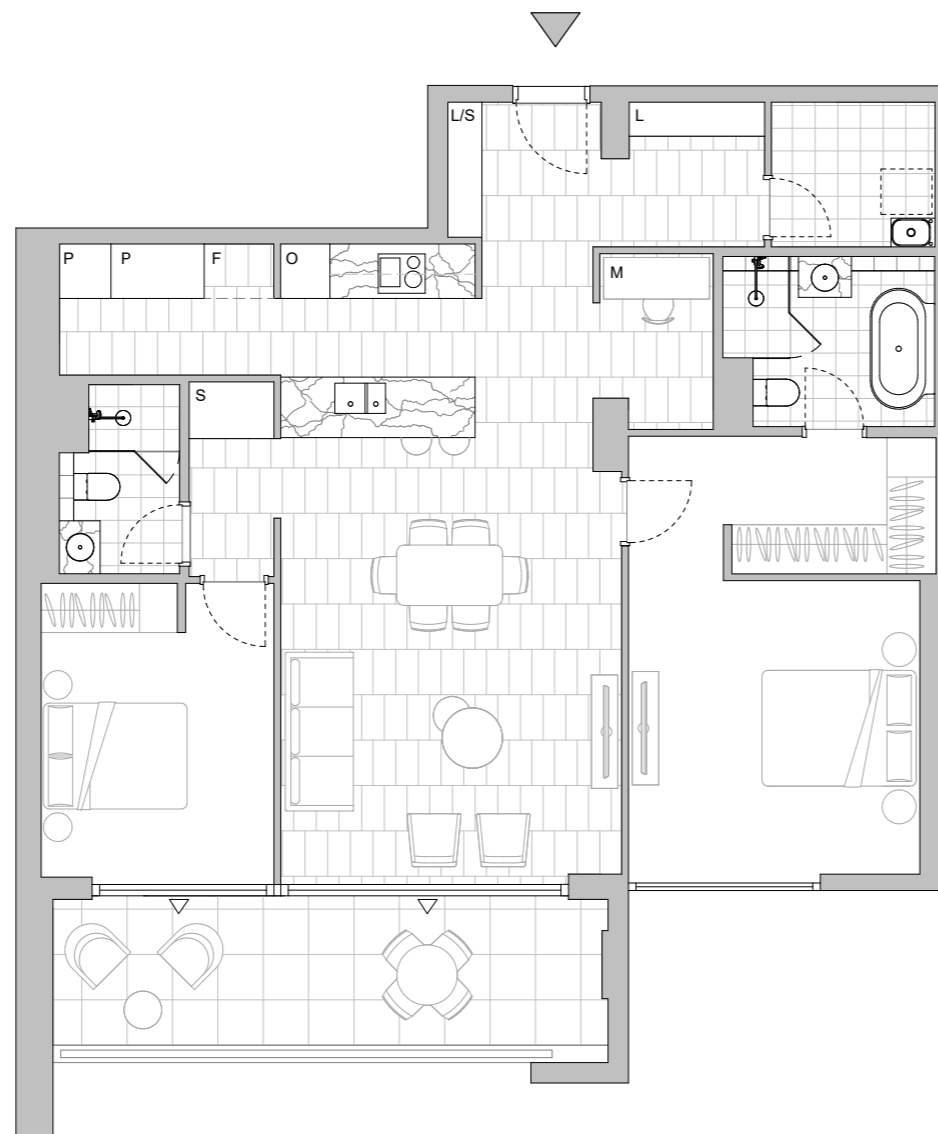


LEGEND - As Applicable

Access	Balcony Access	** Vertical Screen
F Fridge Space	IF Integrated Fridge	SL Skylight
P Pantry	S Storage	SY Study
O Oven Stack	L Linen	
M Media	K King Bed	



This floor plan was produced prior to construction and while the information contained herein is believed to be correct it is not guaranteed. Changes will undoubtedly be made in accordance with the contract for sale. The plan does not show additional features such as hot water systems, services or bulkheads necessary for services. Dimensions, areas and scale of floor plans are approximate only. Dimensions are measured, and areas are calculated, in accordance with the Australian Property Institute Method of Measurement effective at the date of preparation of the Floor Plan. The furniture and furnishings depicted are not included with any sale. Purchasers must refer to the contract for sale for the list of inclusions. Furnishings should not be taken to indicate the final position of power points, TV connection points and the like. Bed sizes shown are indicative only and not guaranteed. All graphics, including design and extent of tile/paver/carpet areas, landscaping, balustrades, louvres, sun shading, fencing, privacy screens, services equipment and wintergardens are for illustrative purposes only and are not to be relied on as a representative of the final product. All level changes in the courtyards may not be shown.



LEVEL 1

HIGH FOREST

APARTMENTS

Apartment No. 230 Building EUCALYPT Lot No. 14

Colour Scheme
SUMMER

2 BEDROOM APARTMENT

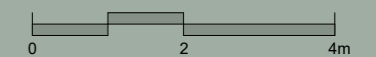
Internal Area 89 m²
Balcony Area 13 m²
Total Area 102 m²

Areas subject to change in accordance with the provisions of the contract. Area includes balcony and/or terrace where applicable. It excludes associated parking and external storage areas.

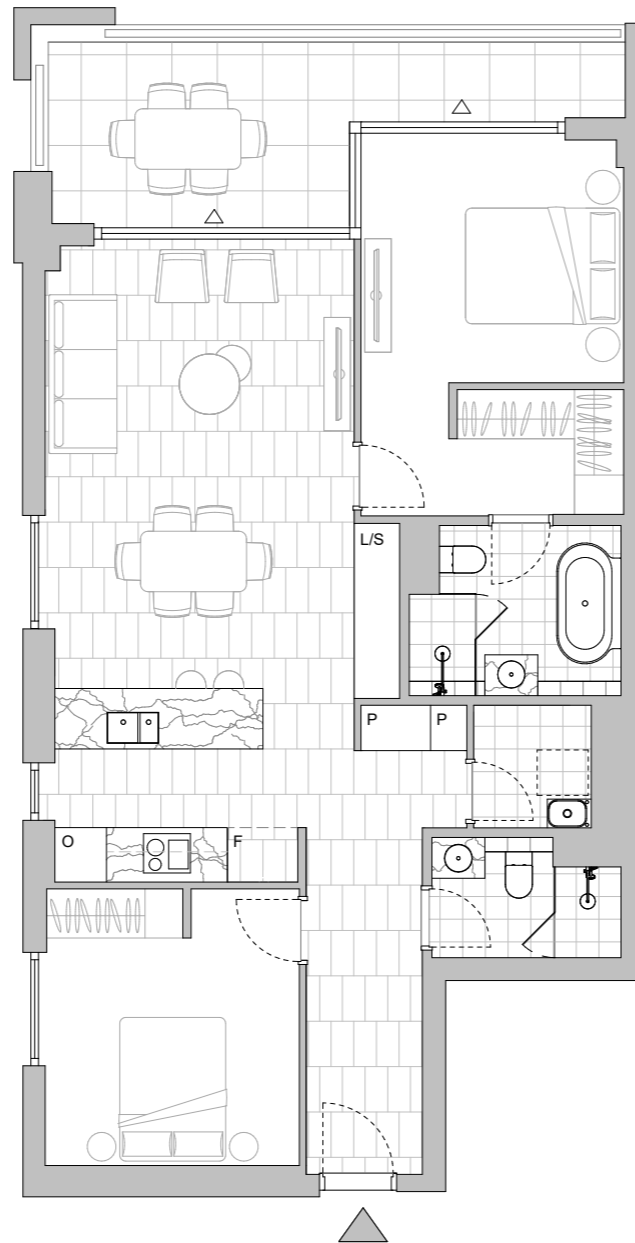


LEGEND - As Applicable

- | | | |
|----------------|----------------------|--------------------|
| ▲ Access | △ Balcony Access | ** Vertical Screen |
| F Fridge Space | IF Integrated Fridge | SL Skylight |
| P Pantry | S Storage | SY Study |
| O Oven Stack | L Linen | |
| M Media | K King Bed | |



This floor plan was produced prior to construction and while the information contained herein is believed to be correct it is not guaranteed. Changes will undoubtedly be made in accordance with the contract for sale. The plan does not show additional features such as hot water systems, services or bulkheads necessary for services. Dimensions, areas and scale of floor plans are approximate only. Dimensions are measured, and areas are calculated, in accordance with the Australian Property Institute Method of Measurement effective at the date of preparation of the Floor Plan. The furniture and furnishings depicted are not included with any sale. Purchasers must refer to the contract for sale for the list of inclusions. Furnishings should not be taken to indicate the final position of power points, TV connection points and the like. Bed sizes shown are indicative only and not guaranteed. All graphics, including design and extent of tile/paver/carpet areas, landscaping, balustrades, louvres, sun shading, fencing, privacy screens, services equipment and wintergardens are for illustrative purposes only and are not to be relied on as a representative of the final product. All level changes in the courtyards may not be shown.



LEVEL 2

HIGH FOREST

APARTMENTS

Apartment No. 231 Building EUCALYPT Lot No. 15

Colour Scheme
AUTUMN

2 BEDROOM APARTMENT

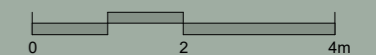
Internal Area 87 m²
Balcony Area 15 m²
Total Area 102 m²

Areas subject to change in accordance with the provisions of the contract. Area includes balcony and/or terrace where applicable. It excludes associated parking and external storage areas.

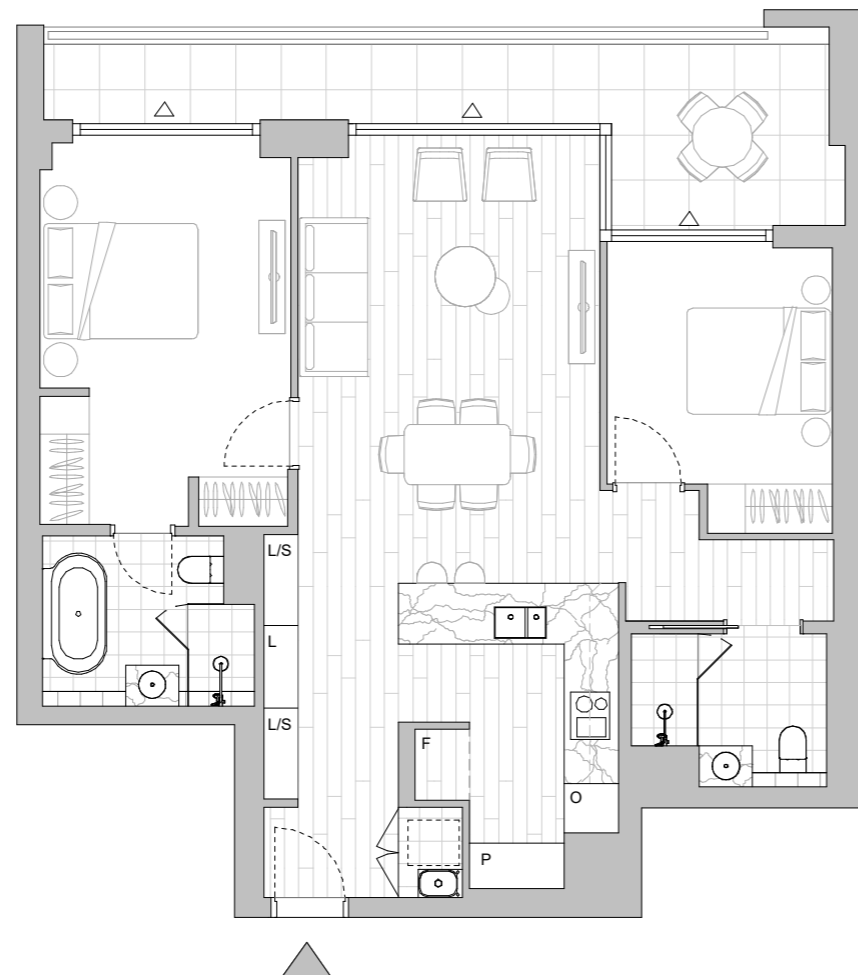


LEGEND - As Applicable

- | | | |
|----------------|----------------------|--------------------|
| Access | Balcony Access | ** Vertical Screen |
| F Fridge Space | IF Integrated Fridge | SL Skylight |
| P Pantry | S Storage | SY Study |
| O Oven Stack | L Linen | |
| M Media | K King Bed | |



This floor plan was produced prior to construction and while the information contained herein is believed to be correct it is not guaranteed. Changes will undoubtedly be made in accordance with the contract for sale. The plan does not show additional features such as hot water systems, services or bulkheads necessary for services. Dimensions, areas and scale of floor plans are approximate only. Dimensions are measured, and areas are calculated, in accordance with the Australian Property Institute Method of Measurement effective at the date of preparation of the Floor Plan. The furniture and furnishings depicted are not included with any sale. Purchasers must refer to the contract for sale for the list of inclusions. Furnishings should not be taken to indicate the final position of power points, TV connection points and the like. Bed sizes shown are indicative only and not guaranteed. All graphics, including design and extent of tile/paver/carpet areas, landscaping, balustrades, louvres, sun shading, fencing, privacy screens, services equipment and wintergardens are for illustrative purposes only and are not to be relied on as a representative of the final product. All level changes in the courtyards may not be shown.



LEVEL 2

HIGH FOREST

APARTMENTS

Apartment No. 232 Building EUCALYPT Lot No. 16

Colour Scheme
SUMMER

2 BEDROOM + MEDIA APARTMENT

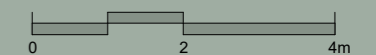
Internal Area 99 m²
Balcony Area 34 m²
Total Area 133 m²

Areas subject to change in accordance with the provisions of the contract. Area includes balcony and/or terrace where applicable. It excludes associated parking and external storage areas.

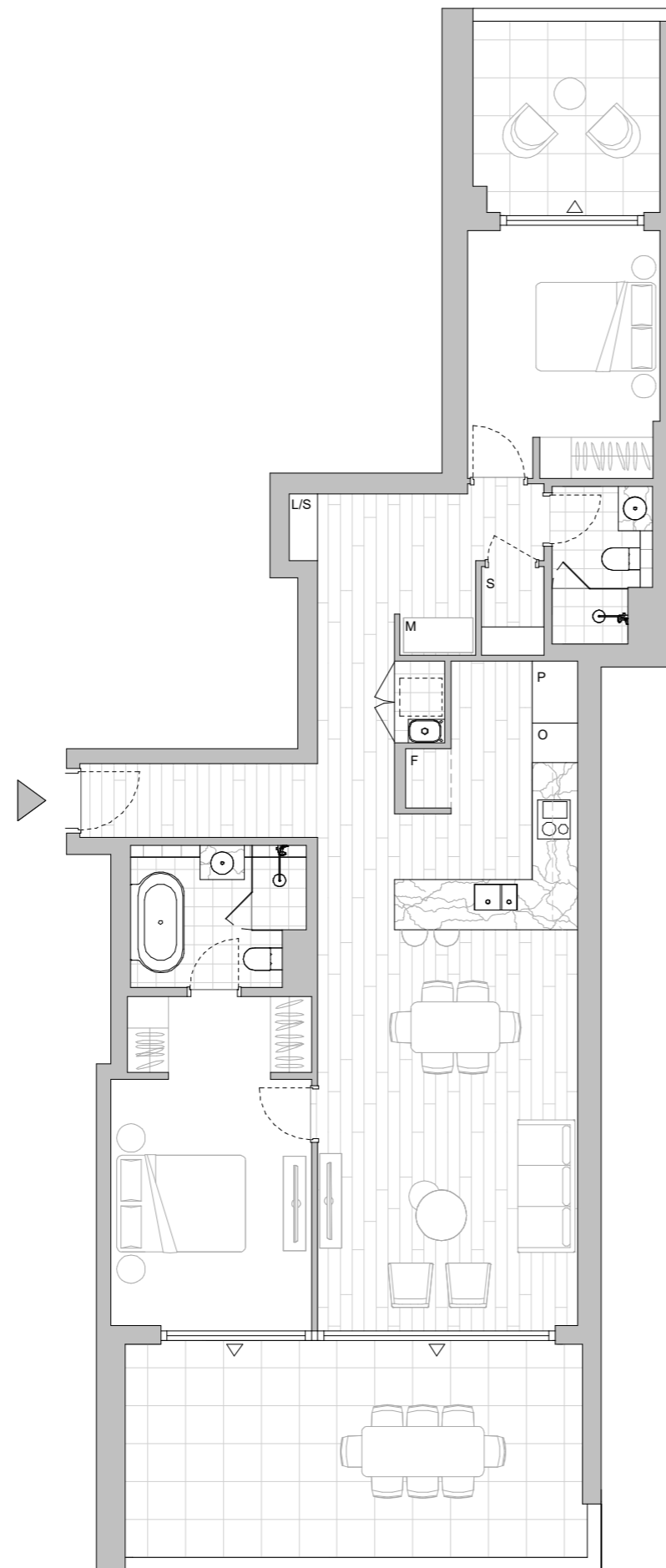


LEGEND - As Applicable

Access	Balcony Access	Vertical Screen
F Fridge Space	IF Integrated Fridge	SL Skylight
P Pantry	S Storage	SY Study
O Oven Stack	L Linen	
M Media	K King Bed	



This floor plan was produced prior to construction and while the information contained herein is believed to be correct it is not guaranteed. Changes will undoubtedly be made in accordance with the contract for sale. The plan does not show additional features such as hot water systems, services or bulkheads necessary for services. Dimensions, areas and scale of floor plans are approximate only. Dimensions are measured, and areas are calculated, in accordance with the Australian Property Institute Method of Measurement effective at the date of preparation of the Floor Plan. The furniture and furnishings depicted are not included with any sale. Purchasers must refer to the contract for sale for the list of inclusions. Furnishings should not be taken to indicate the final position of power points, TV connection points and the like. Bed sizes shown are indicative only and not guaranteed. All graphics, including design and extent of tile/paver/carpet areas, landscaping, balustrades, louvres, sun shading, fencing, privacy screens, services equipment and wintergardens are for illustrative purposes only and are not to be relied on as a representative of the final product. All level changes in the courtyards may not be shown.



LEVEL 2

HIGH FOREST

APARTMENTS

Apartment No. 234 Building EUCALYPT Lot No. 18

Colour Scheme
AUTUMN

2 BEDROOM APARTMENT

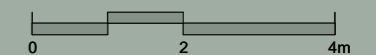
Internal Area 94 m²
Balcony Area 26 m²
Total Area 120 m²

Areas subject to change in accordance with the provisions of the contract. Area includes balcony and/or terrace where applicable. It excludes associated parking and external storage areas.

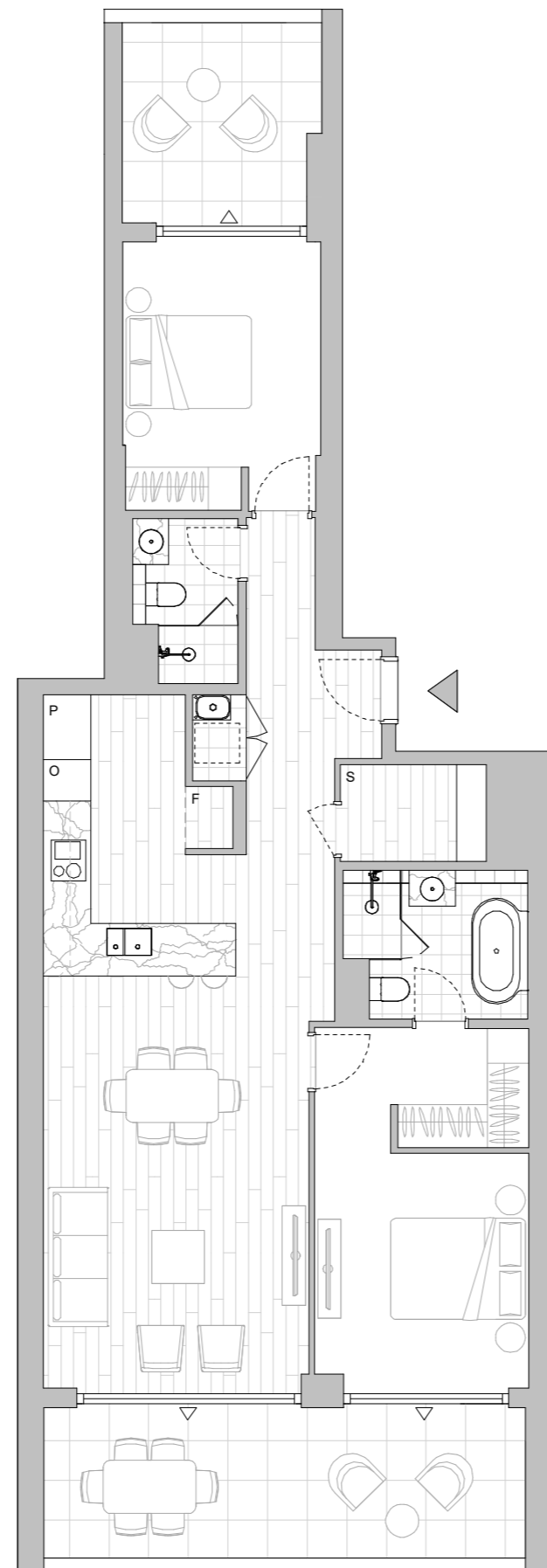


LEGEND - As Applicable

- | | | |
|----------------|----------------------|--------------------|
| Access | Balcony Access | ** Vertical Screen |
| F Fridge Space | IF Integrated Fridge | SL Skylight |
| P Pantry | S Storage | SY Study |
| O Oven Stack | L Linen | |
| M Media | K King Bed | |



This floor plan was produced prior to construction and while the information contained herein is believed to be correct it is not guaranteed. Changes will undoubtedly be made in accordance with the contract for sale. The plan does not show additional features such as hot water systems, services or bulkheads necessary for services. Dimensions, areas and scale of floor plans are approximate only. Dimensions are measured, and areas are calculated, in accordance with the Australian Property Institute Method of Measurement effective at the date of preparation of the Floor Plan. The furniture and furnishings depicted are not included with any sale. Purchasers must refer to the contract for sale for the list of inclusions. Furnishings should not be taken to indicate the final position of power points, TV connection points and the like. Bed sizes shown are indicative only and not guaranteed. All graphics, including design and extent of tile/paver/carpet areas, landscaping, balustrades, louvres, sun shading, fencing, privacy screens, services equipment and wintergardens are for illustrative purposes only and are not to be relied on as a representative of the final product. All level changes in the courtyards may not be shown.



LEVEL 2

HIGH FOREST

APARTMENTS

Apartment No. 237 Building EUCALYPT Lot No. 21

Colour Scheme
SUMMER

2 BEDROOM APARTMENT

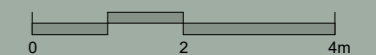
Internal Area 92 m²
Balcony Area 12 m²
Total Area 104 m²

Areas subject to change in accordance with the provisions of the contract. Area includes balcony and/or terrace where applicable. It excludes associated parking and external storage areas.

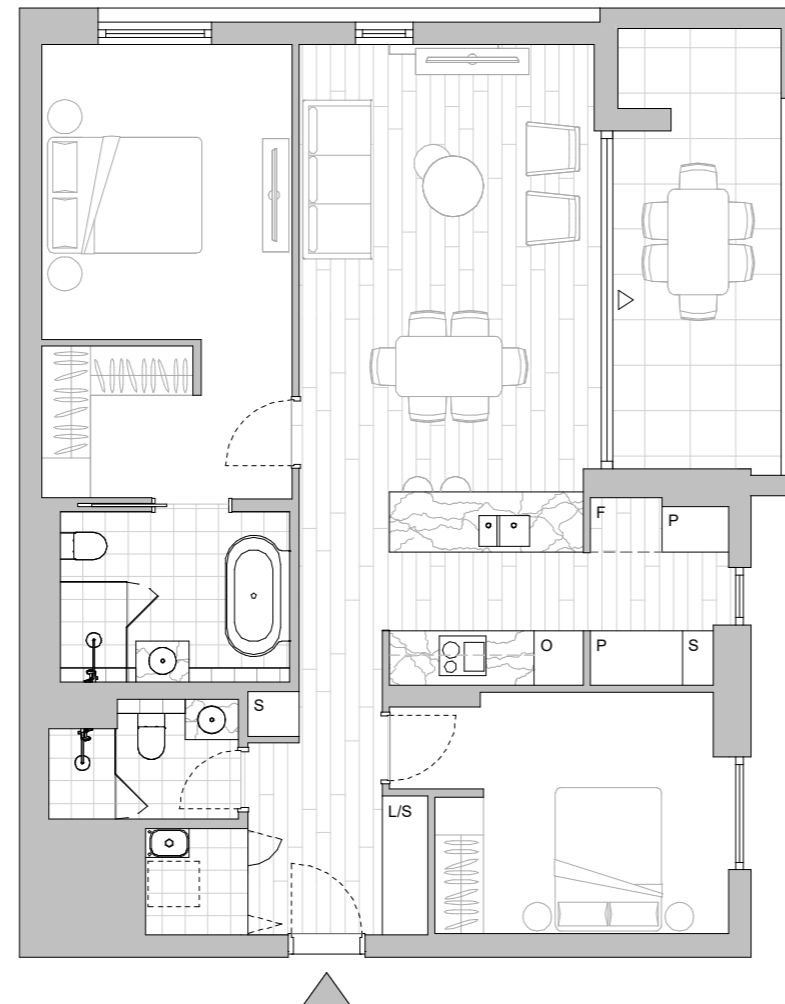


LEGEND - As Applicable

- | | | |
|----------------|----------------------|--------------------|
| ▲ Access | △ Balcony Access | ** Vertical Screen |
| F Fridge Space | IF Integrated Fridge | SL Skylight |
| P Pantry | S Storage | SY Study |
| O Oven Stack | L Linen | |
| M Media | K King Bed | |



This floor plan was produced prior to construction and while the information contained herein is believed to be correct it is not guaranteed. Changes will undoubtedly be made in accordance with the contract for sale. The plan does not show additional features such as hot water systems, services or bulkheads necessary for services. Dimensions, areas and scale of floor plans are approximate only. Dimensions are measured, and areas are calculated, in accordance with the Australian Property Institute Method of Measurement effective at the date of preparation of the Floor Plan. The furniture and furnishings depicted are not included with any sale. Purchasers must refer to the contract for sale for the list of inclusions. Furnishings should not be taken to indicate the final position of power points, TV connection points and the like. Bed sizes shown are indicative only and not guaranteed. All graphics, including design and extent of tile/paver/carpet areas, landscaping, balustrades, louvres, sun shading, fencing, privacy screens, services equipment and wintergardens are for illustrative purposes only and are not to be relied on as a representative of the final product. All level changes in the courtyards may not be shown.



LEVEL 2

HIGHFOREST

APARTMENTS

Apartment No. 238 Building EUCALYPT Lot No. 22

Colour Scheme
AUTUMN

2 BEDROOM APARTMENT

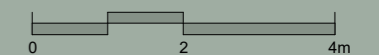
Internal Area 84 m²
Balcony Area 12 m²
Total Area 96 m²

Areas subject to change in accordance with the provisions of the contract. Area includes balcony and/or terrace where applicable. It excludes associated parking and external storage areas.

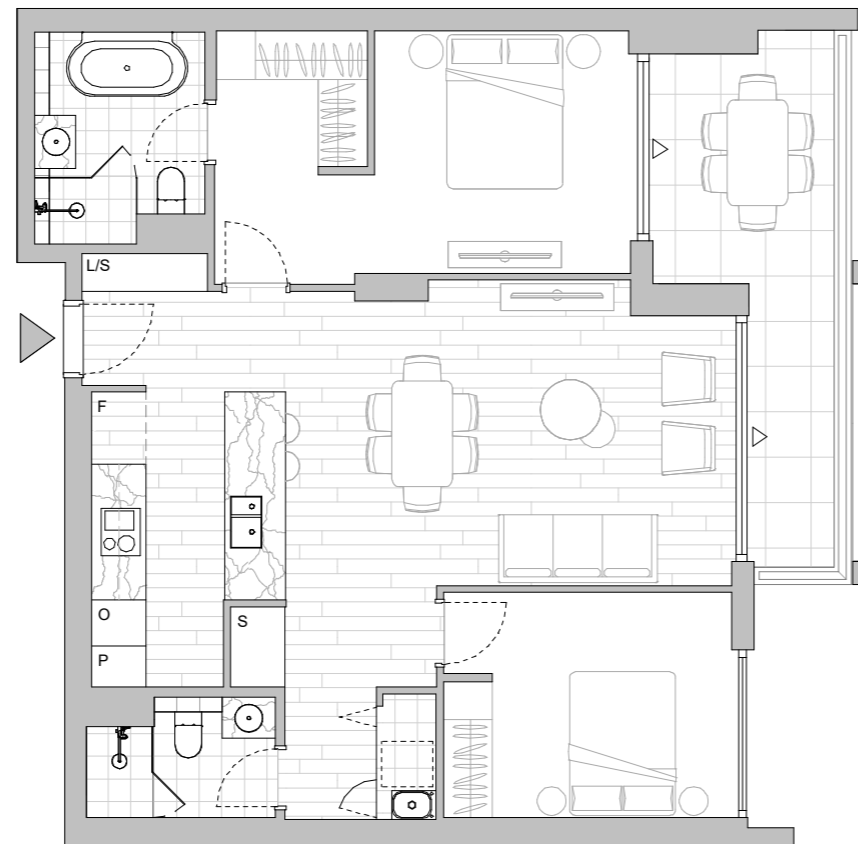


LEGEND - As Applicable

Access	Balcony Access	** Vertical Screen
F Fridge Space	IF Integrated Fridge	SL Skylight
P Pantry	S Storage	SY Study
O Oven Stack	L Linen	
M Media	K King Bed	



This floor plan was produced prior to construction and while the information contained herein is believed to be correct it is not guaranteed. Changes will undoubtedly be made in accordance with the contract for sale. The plan does not show additional features such as hot water systems, services or bulkheads necessary for services. Dimensions, areas and scale of floor plans are approximate only. Dimensions are measured, and areas are calculated, in accordance with the Australian Property Institute Method of Measurement effective at the date of preparation of the Floor Plan. The furniture and furnishings depicted are not included with any sale. Purchasers must refer to the contract for sale for the list of inclusions. Furnishings should not be taken to indicate the final position of power points, TV connection points and the like. Bed sizes shown are indicative only and not guaranteed. All graphics, including design and extent of tile/paver/carpet areas, landscaping, balustrades, louvres, sun shading, fencing, privacy screens, services equipment and wintergardens are for illustrative purposes only and are not to be relied on as a representative of the final product. All level changes in the courtyards may not be shown.



LEVEL 2

HIGH FOREST

APARTMENTS

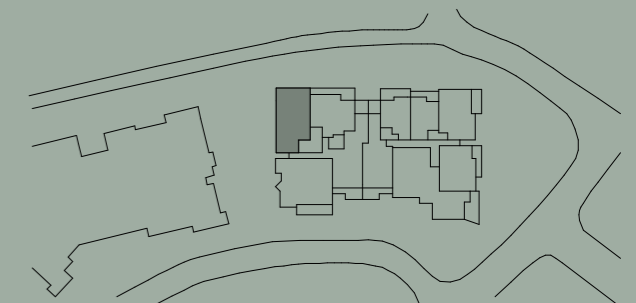
Apartment No. 331 Building EUCALYPT Lot No. 24

Colour Scheme
AUTUMN

2 BEDROOM APARTMENT

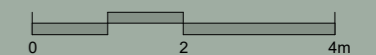
Internal Area 89 m²
Balcony Area 15 m²
Total Area 104 m²

Areas subject to change in accordance with the provisions of the contract. Area includes balcony and/or terrace where applicable. It excludes associated parking and external storage areas.

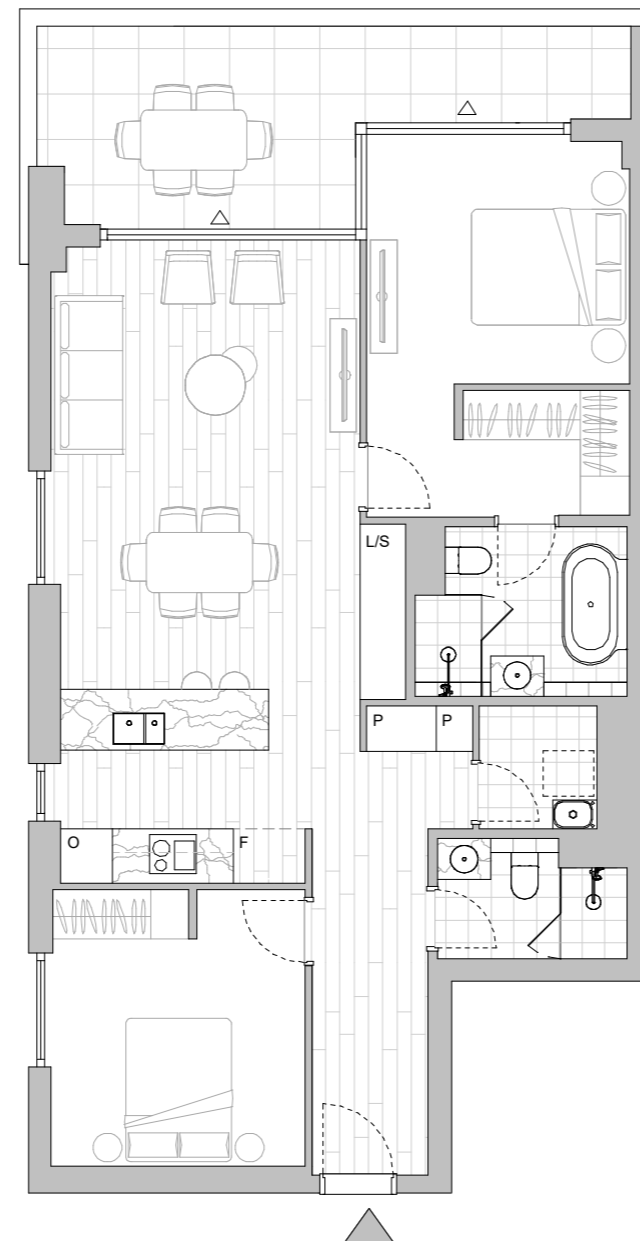


LEGEND - As Applicable

▲ Access	△ Balcony Access	** Vertical Screen
F Fridge Space	IF Integrated Fridge	SL Skylight
P Pantry	S Storage	SY Study
O Oven Stack	L Linen	
M Media	K King Bed	



This floor plan was produced prior to construction and while the information contained herein is believed to be correct it is not guaranteed. Changes will undoubtedly be made in accordance with the contract for sale. The plan does not show additional features such as hot water systems, services or bulkheads necessary for services. Dimensions, areas and scale of floor plans are approximate only. Dimensions are measured, and areas are calculated, in accordance with the Australian Property Institute Method of Measurement effective at the date of preparation of the Floor Plan. The furniture and furnishings depicted are not included with any sale. Purchasers must refer to the contract for sale for the list of inclusions. Furnishings should not be taken to indicate the final position of power points, TV connection points and the like. Bed sizes shown are indicative only and not guaranteed. All graphics, including design and extent of tile/paver/carpet areas, landscaping, balustrades, louvres, sun shading, fencing, privacy screens, services equipment and wintergardens are for illustrative purposes only and are not to be relied on as a representative of the final product. All level changes in the courtyards may not be shown.



LEVEL 3

HIGH FOREST

APARTMENTS

Apartment No. 332 Building EUCALYPT Lot No. 25

Colour Scheme
SUMMER

2 BEDROOM APARTMENT

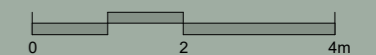
Internal Area 87 m²
Balcony Area 17 m²
Total Area 104 m²

Areas subject to change in accordance with the provisions of the contract. Area includes balcony and/or terrace where applicable. It excludes associated parking and external storage areas.

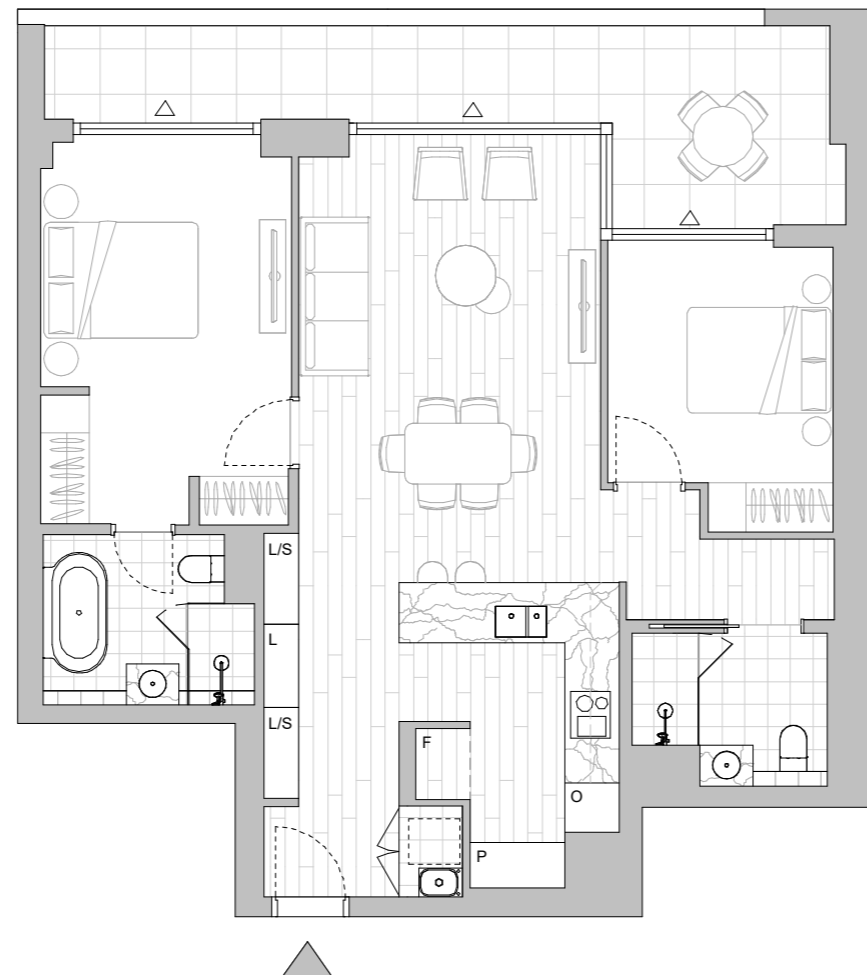


LEGEND - As Applicable

Access	Balcony Access	** Vertical Screen
F Fridge Space	IF Integrated Fridge	SL Skylight
P Pantry	S Storage	SY Study
O Oven Stack	L Linen	
M Media	K King Bed	



This floor plan was produced prior to construction and while the information contained herein is believed to be correct it is not guaranteed. Changes will undoubtedly be made in accordance with the contract for sale. The plan does not show additional features such as hot water systems, services or bulkheads necessary for services. Dimensions, areas and scale of floor plans are approximate only. Dimensions are measured, and areas are calculated, in accordance with the Australian Property Institute Method of Measurement effective at the date of preparation of the Floor Plan. The furniture and furnishings depicted are not included with any sale. Purchasers must refer to the contract for sale for the list of inclusions. Furnishings should not be taken to indicate the final position of power points, TV connection points and the like. Bed sizes shown are indicative only and not guaranteed. All graphics, including design and extent of tile/paver/carpet areas, landscaping, balustrades, louvres, sun shading, fencing, privacy screens, services equipment and wintergardens are for illustrative purposes only and are not to be relied on as a representative of the final product. All level changes in the courtyards may not be shown.



LEVEL 3

HIGH FOREST

APARTMENTS

Apartment No. 333 Building EUCALYPT Lot No. 26

Colour Scheme
AUTUMN

2 BEDROOM + MEDIA APARTMENT

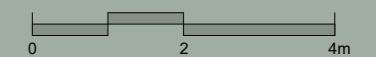
Internal Area 99 m²
Balcony Area 21 m²
Total Area 120 m²

Areas subject to change in accordance with the provisions of the contract. Area includes balcony and/or terrace where applicable. It excludes associated parking and external storage areas.

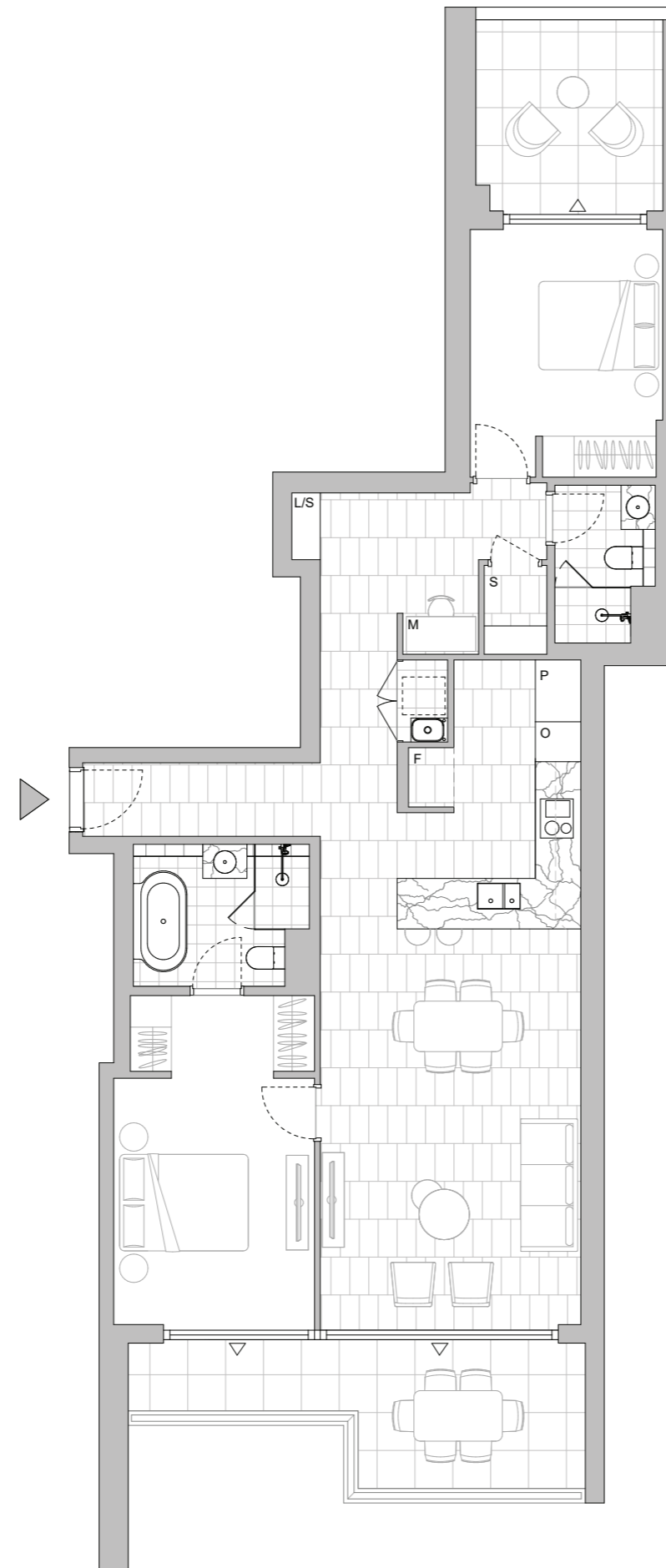


LEGEND - As Applicable

Access	Balcony Access	Vertical Screen
F Fridge Space	IF Integrated Fridge	SL Skylight
P Pantry	S Storage	SY Study
O Oven Stack	L Linen	
M Media	K King Bed	



This floor plan was produced prior to construction and while the information contained herein is believed to be correct it is not guaranteed. Changes will undoubtedly be made in accordance with the contract for sale. The plan does not show additional features such as hot water systems, services or bulkheads necessary for services. Dimensions, areas and scale of floor plans are approximate only. Dimensions are measured, and areas are calculated, in accordance with the Australian Property Institute Method of Measurement effective at the date of preparation of the Floor Plan. The furniture and furnishings depicted are not included with any sale. Purchasers must refer to the contract for sale for the list of inclusions. Furnishings should not be taken to indicate the final position of power points, TV connection points and the like. Bed sizes shown are indicative only and not guaranteed. All graphics, including design and extent of tile/paver/carpet areas, landscaping, balustrades, louvres, sun shading, fencing, privacy screens, services equipment and wintergardens are for illustrative purposes only and are not to be relied on as a representative of the final product. All level changes in the courtyards may not be shown.



LEVEL 3

HIGH FOREST

APARTMENTS

Apartment No. 335 Building EUCALYPT Lot No. 28

Colour Scheme
SUMMER

2 BEDROOM APARTMENT

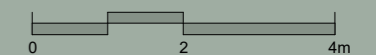
Internal Area 94 m²
Balcony Area 21 m²
Total Area 115 m²

Areas subject to change in accordance with the provisions of the contract. Area includes balcony and/or terrace where applicable. It excludes associated parking and external storage areas.

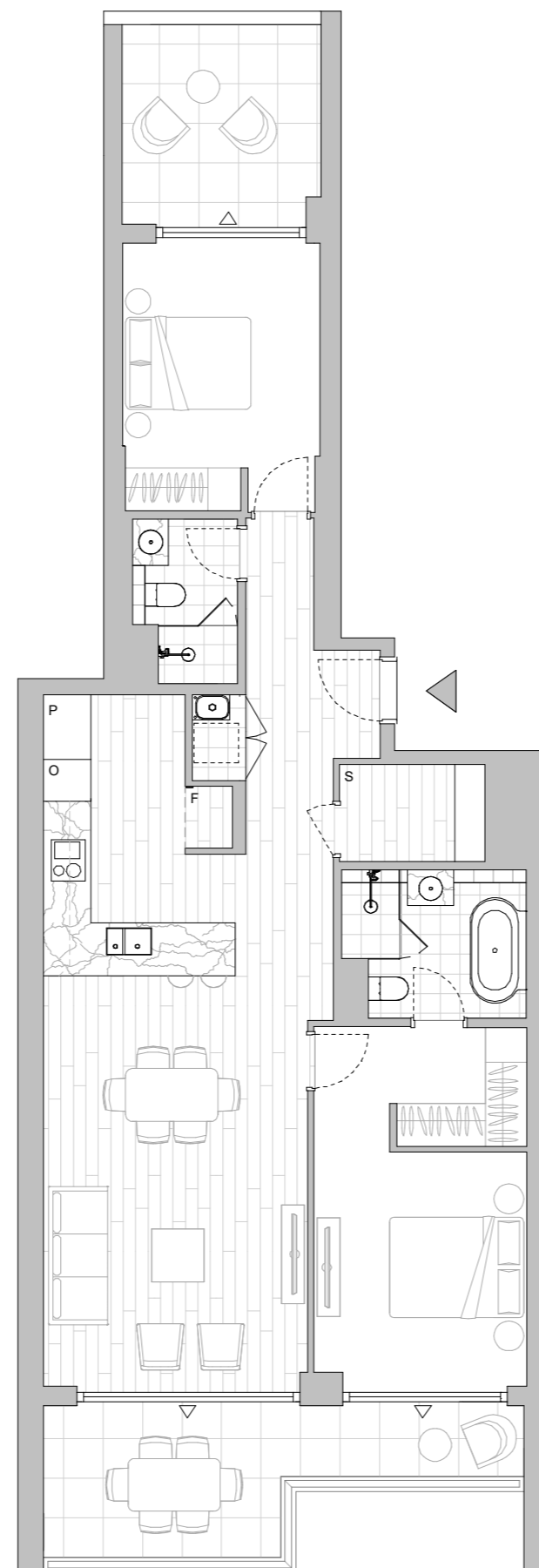


LEGEND - As Applicable

- | | | |
|----------------|----------------------|--------------------|
| Access | Balcony Access | ** Vertical Screen |
| F Fridge Space | IF Integrated Fridge | SL Skylight |
| P Pantry | S Storage | SY Study |
| O Oven Stack | L Linen | |
| M Media | K King Bed | |



This floor plan was produced prior to construction and while the information contained herein is believed to be correct it is not guaranteed. Changes will undoubtedly be made in accordance with the contract for sale. The plan does not show additional features such as hot water systems, services or bulkheads necessary for services. Dimensions, areas and scale of floor plans are approximate only. Dimensions are measured, and areas are calculated, in accordance with the Australian Property Institute Method of Measurement effective at the date of preparation of the Floor Plan. The furniture and furnishings depicted are not included with any sale. Purchasers must refer to the contract for sale for the list of inclusions. Furnishings should not be taken to indicate the final position of power points, TV connection points and the like. Bed sizes shown are indicative only and not guaranteed. All graphics, including design and extent of tile/paver/carpet areas, landscaping, balustrades, louvres, sun shading, fencing, privacy screens, services equipment and wintergardens are for illustrative purposes only and are not to be relied on as a representative of the final product. All level changes in the courtyards may not be shown.



LEVEL 3

HIGH FOREST

APARTMENTS

Apartment No. 338 Building EUCALYPT Lot No. 31

Colour Scheme
AUTUMN

2 BEDROOM APARTMENT

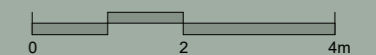
Internal Area 92 m²
Balcony Area 12 m²
Total Area 104 m²

Areas subject to change in accordance with the provisions of the contract. Area includes balcony and/or terrace where applicable. It excludes associated parking and external storage areas.

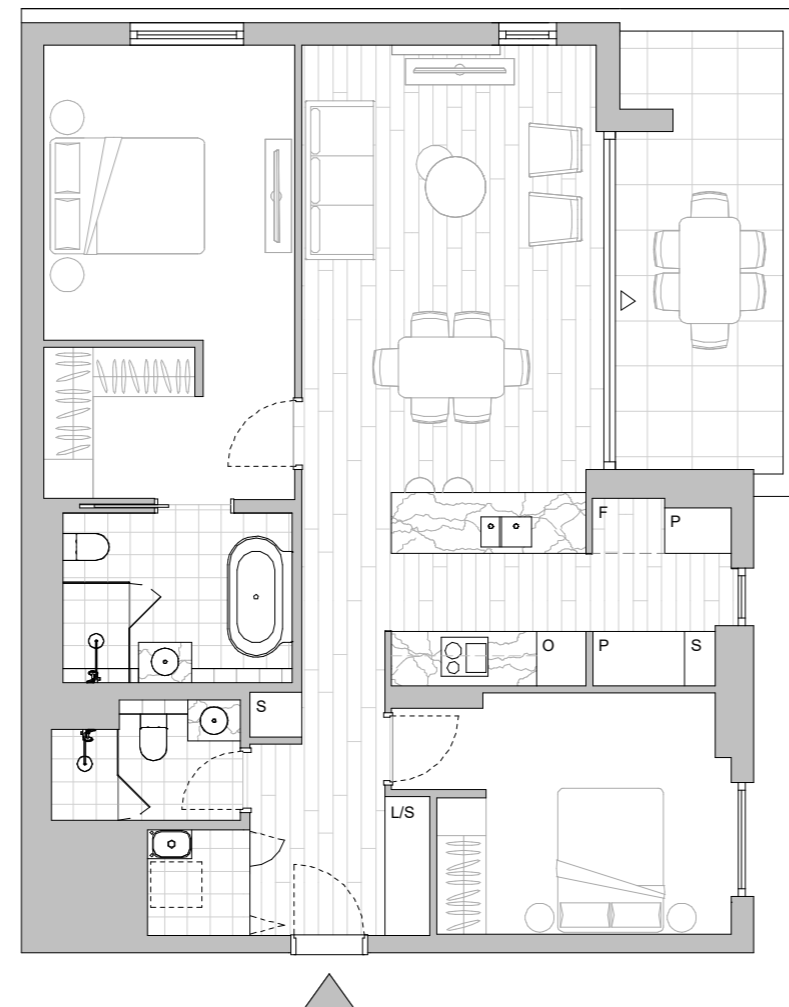


LEGEND - As Applicable

- | | | |
|----------------|----------------------|--------------------|
| ▲ Access | △ Balcony Access | ** Vertical Screen |
| F Fridge Space | IF Integrated Fridge | SL Skylight |
| P Pantry | S Storage | SY Study |
| O Oven Stack | L Linen | |
| M Media | K King Bed | |



This floor plan was produced prior to construction and while the information contained herein is believed to be correct it is not guaranteed. Changes will undoubtedly be made in accordance with the contract for sale. The plan does not show additional features such as hot water systems, services or bulkheads necessary for services. Dimensions, areas and scale of floor plans are approximate only. Dimensions are measured, and areas are calculated, in accordance with the Australian Property Institute Method of Measurement effective at the date of preparation of the Floor Plan. The furniture and furnishings depicted are not included with any sale. Purchasers must refer to the contract for sale for the list of inclusions. Furnishings should not be taken to indicate the final position of power points, TV connection points and the like. Bed sizes shown are indicative only and not guaranteed. All graphics, including design and extent of tile/paver/carpet areas, landscaping, balustrades, louvres, sun shading, fencing, privacy screens, services equipment and wintergardens are for illustrative purposes only and are not to be relied on as a representative of the final product. All level changes in the courtyards may not be shown.



LEVEL 3

HIGH FOREST

APARTMENTS

Apartment No. 339 Building EUCALYPT Lot No. 32

Colour Scheme
SUMMER

2 BEDROOM APARTMENT

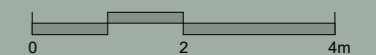
Internal Area 84 m²
Balcony Area 12 m²
Total Area 96 m²

Areas subject to change in accordance with the provisions of the contract. Area includes balcony and/or terrace where applicable. It excludes associated parking and external storage areas.

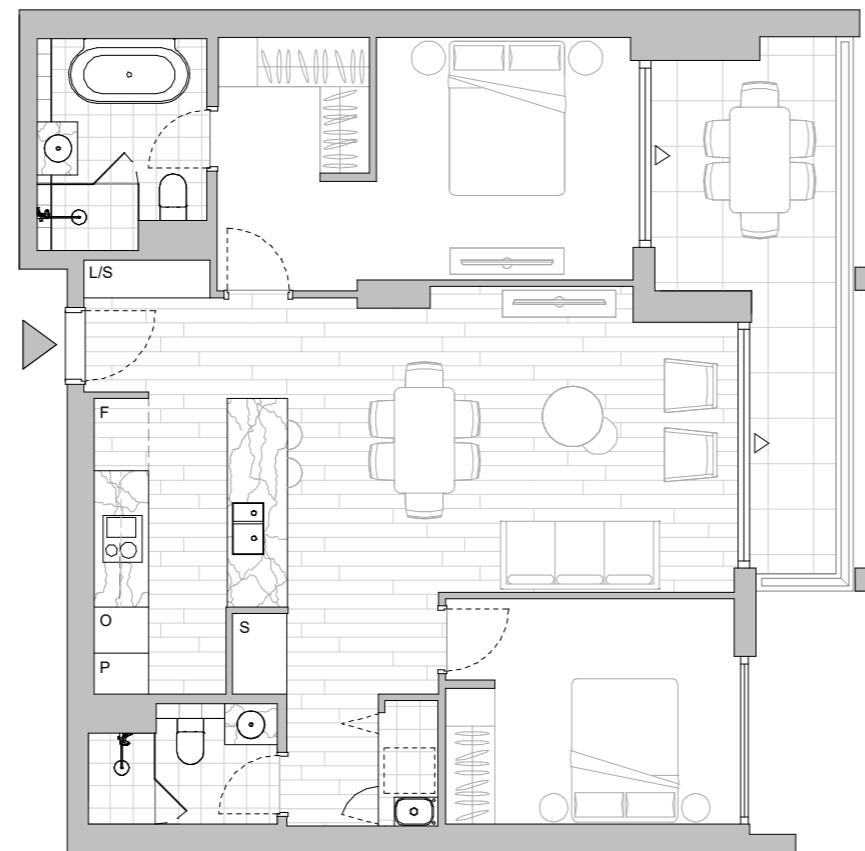


LEGEND - As Applicable

- | | | |
|----------------|----------------------|--------------------|
| Access | Balcony Access | ** Vertical Screen |
| F Fridge Space | IF Integrated Fridge | SL Skylight |
| P Pantry | S Storage | SY Study |
| O Oven Stack | L Linen | |
| M Media | K King Bed | |



This floor plan was produced prior to construction and while the information contained herein is believed to be correct it is not guaranteed. Changes will undoubtedly be made in accordance with the contract for sale. The plan does not show additional features such as hot water systems, services or bulkheads necessary for services. Dimensions, areas and scale of floor plans are approximate only. Dimensions are measured, and areas are calculated, in accordance with the Australian Property Institute Method of Measurement effective at the date of preparation of the Floor Plan. The furniture and furnishings depicted are not included with any sale. Purchasers must refer to the contract for sale for the list of inclusions. Furnishings should not be taken to indicate the final position of power points, TV connection points and the like. Bed sizes shown are indicative only and not guaranteed. All graphics, including design and extent of tile/paver/carpet areas, landscaping, balustrades, louvres, sun shading, fencing, privacy screens, services equipment and wintergardens are for illustrative purposes only and are not to be relied on as a representative of the final product. All level changes in the courtyards may not be shown.



LEVEL 3

Apartment No. 431 Building EUCALYPT Lot No. 34

Colour Scheme
SUMMER

2 BEDROOM APARTMENT

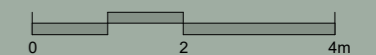
Internal Area 89 m²
Balcony Area 13 m²
Total Area 102 m²

Areas subject to change in accordance with the provisions of the contract. Area includes balcony and/or terrace where applicable. It excludes associated parking and external storage areas.

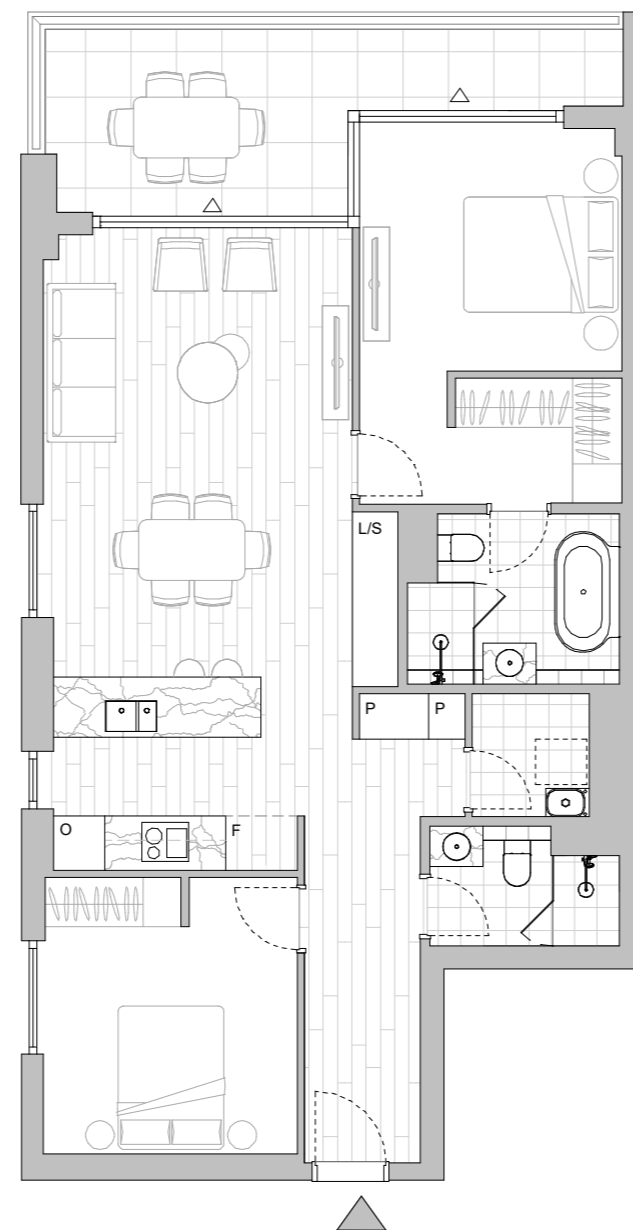


LEGEND - As Applicable

▲ Access	△ Balcony Access	** Vertical Screen
F Fridge Space	IF Integrated Fridge	SL Skylight
P Pantry	S Storage	SY Study
O Oven Stack	L Linen	
M Media	K King Bed	



This floor plan was produced prior to construction and while the information contained herein is believed to be correct it is not guaranteed. Changes will undoubtedly be made in accordance with the contract for sale. The plan does not show additional features such as hot water systems, services or bulkheads necessary for services. Dimensions, areas and scale of floor plans are approximate only. Dimensions are measured, and areas are calculated, in accordance with the Australian Property Institute Method of Measurement effective at the date of preparation of the Floor Plan. The furniture and furnishings depicted are not included with any sale. Purchasers must refer to the contract for sale for the list of inclusions. Furnishings should not be taken to indicate the final position of power points, TV connection points and the like. Bed sizes shown are indicative only and not guaranteed. All graphics, including design and extent of tile/paver/carpet areas, landscaping, balustrades, louvres, sun shading, fencing, privacy screens, services equipment and wintergardens are for illustrative purposes only and are not to be relied on as a representative of the final product. All level changes in the courtyards may not be shown.



LEVEL 4

HIGH FOREST

APARTMENTS

Apartment No. 432 Building EUCALYPT Lot No. 35

Colour Scheme
AUTUMN

2 BEDROOM APARTMENT

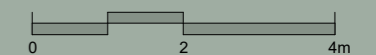
Internal Area 87 m²
Balcony Area 11 m²
Total Area 98 m²

Areas subject to change in accordance with the provisions of the contract. Area includes balcony and/or terrace where applicable. It excludes associated parking and external storage areas.

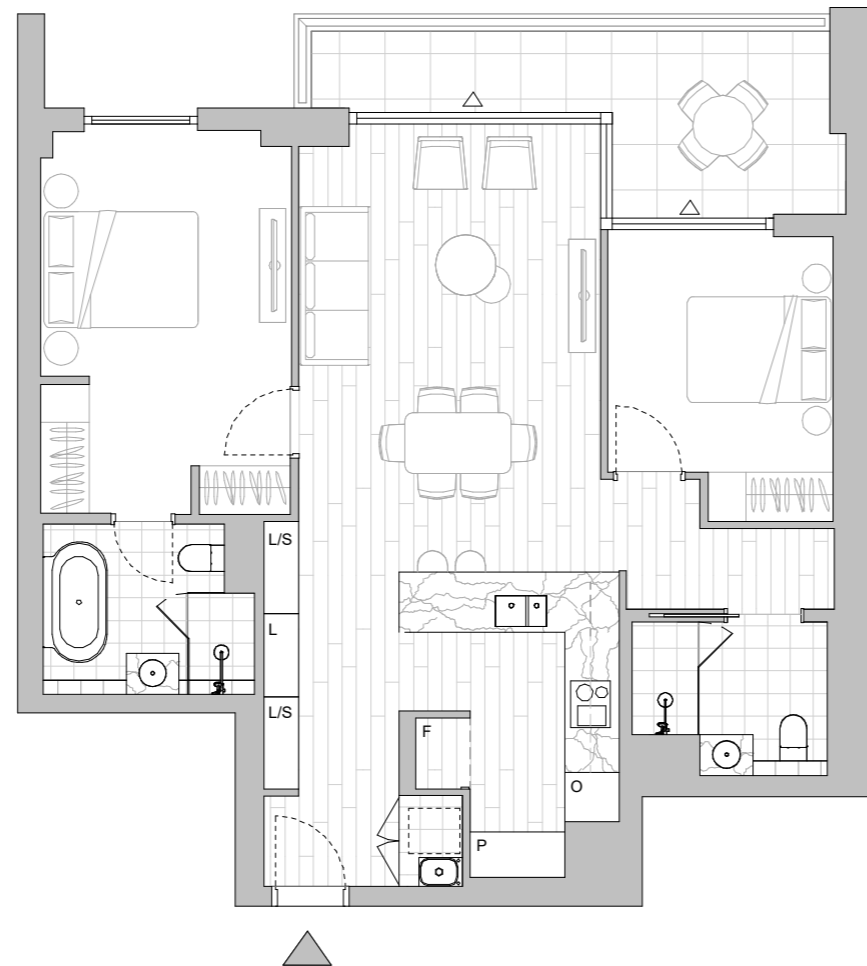


LEGEND - As Applicable

- | | | |
|----------------|----------------------|--------------------|
| ▲ Access | △ Balcony Access | ** Vertical Screen |
| F Fridge Space | IF Integrated Fridge | SL Skylight |
| P Pantry | S Storage | SY Study |
| O Oven Stack | L Linen | |
| M Media | K King Bed | |



This floor plan was produced prior to construction and while the information contained herein is believed to be correct it is not guaranteed. Changes will undoubtedly be made in accordance with the contract for sale. The plan does not show additional features such as hot water systems, services or bulkheads necessary for services. Dimensions, areas and scale of floor plans are approximate only. Dimensions are measured, and areas are calculated, in accordance with the Australian Property Institute Method of Measurement effective at the date of preparation of the Floor Plan. The furniture and furnishings depicted are not included with any sale. Purchasers must refer to the contract for sale for the list of inclusions. Furnishings should not be taken to indicate the final position of power points, TV connection points and the like. Bed sizes shown are indicative only and not guaranteed. All graphics, including design and extent of tile/paver/carpet areas, landscaping, balustrades, louvres, sun shading, fencing, privacy screens, services equipment and wintergardens are for illustrative purposes only and are not to be relied on as a representative of the final product. All level changes in the courtyards may not be shown.



LEVEL 4

HIGH FOREST

APARTMENTS

Apartment No. 433 Building EUCALYPT Lot No. 36

Colour Scheme
SUMMER

2 BEDROOM + MEDIA APARTMENT

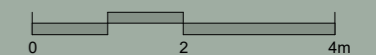
Internal Area 99 m²
Balcony Area 15 m²
Total Area 114 m²

Areas subject to change in accordance with the provisions of the contract. Area includes balcony and/or terrace where applicable. It excludes associated parking and external storage areas.

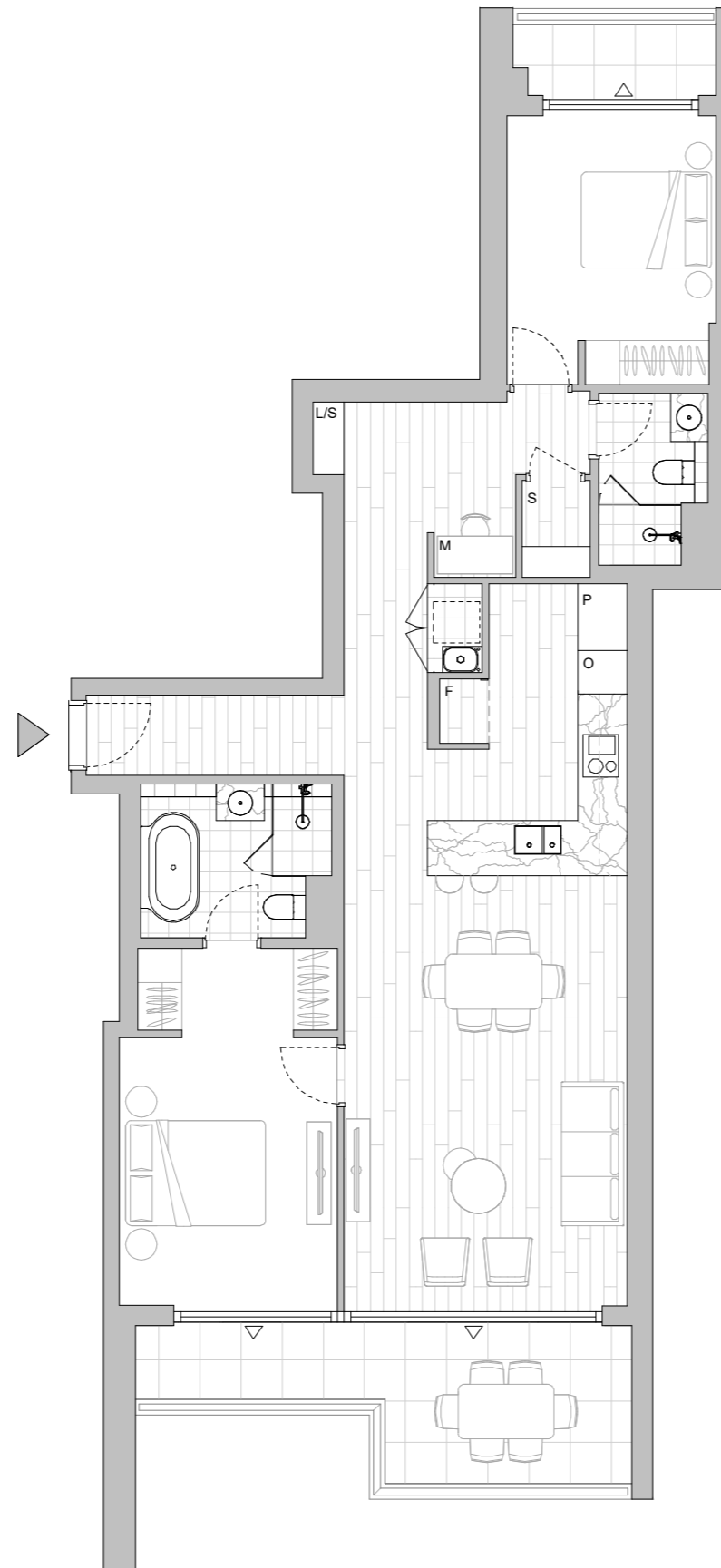


LEGEND - As Applicable

Access	Balcony Access	** Vertical Screen
F Fridge Space	IF Integrated Fridge	SL Skylight
P Pantry	S Storage	SY Study
O Oven Stack	L Linen	
M Media	K King Bed	



This floor plan was produced prior to construction and while the information contained herein is believed to be correct it is not guaranteed. Changes will undoubtedly be made in accordance with the contract for sale. The plan does not show additional features such as hot water systems, services or bulkheads necessary for services. Dimensions, areas and scale of floor plans are approximate only. Dimensions are measured, and areas are calculated, in accordance with the Australian Property Institute Method of Measurement effective at the date of preparation of the Floor Plan. The furniture and furnishings depicted are not included with any sale. Purchasers must refer to the contract for sale for the list of inclusions. Furnishings should not be taken to indicate the final position of power points, TV connection points and the like. Bed sizes shown are indicative only and not guaranteed. All graphics, including design and extent of tile/paver/carpet areas, landscaping, balustrades, louvres, sun shading, fencing, privacy screens, services equipment and wintergardens are for illustrative purposes only and are not to be relied on as a representative of the final product. All level changes in the courtyards may not be shown.



LEVEL 4

HIGH FOREST

APARTMENTS

Apartment No. 435 Building EUCALYPT Lot No. 38

Colour Scheme
AUTUMN

2 BEDROOM APARTMENT

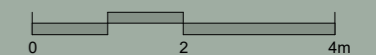
Internal Area 94 m²
Balcony Area 15 m²
Total Area 109 m²

Areas subject to change in accordance with the provisions of the contract. Area includes balcony and/or terrace where applicable. It excludes associated parking and external storage areas.

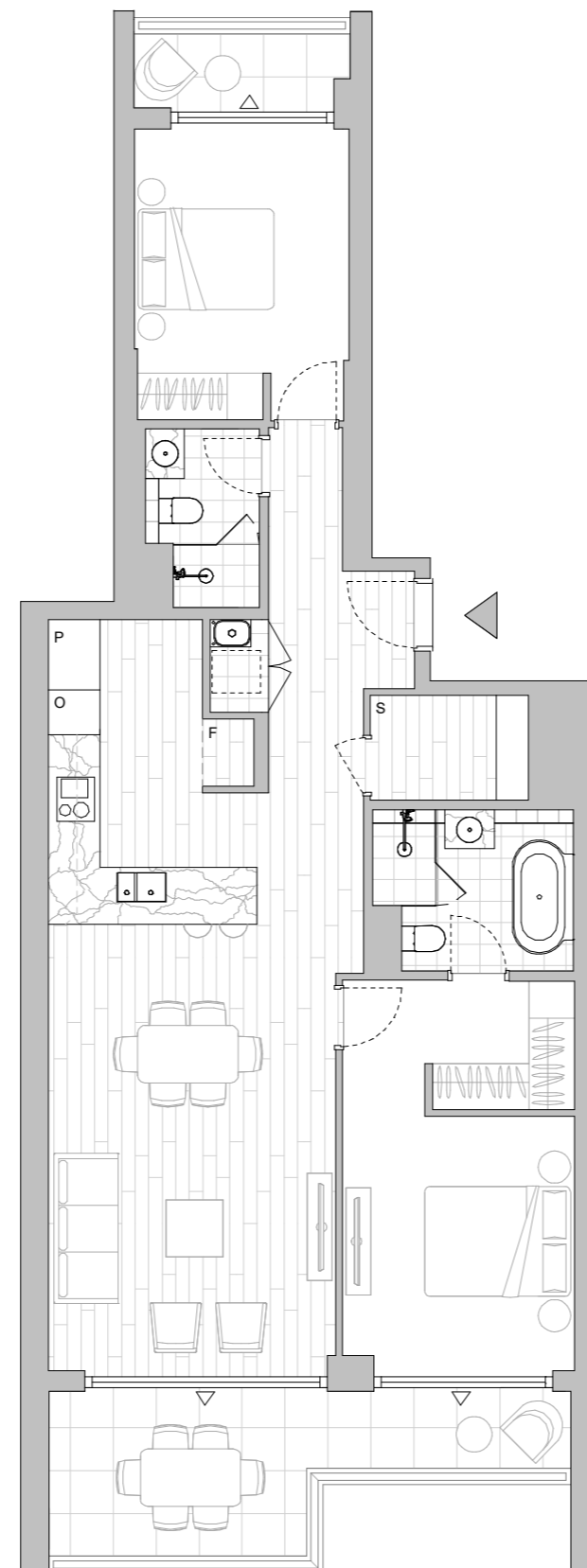


LEGEND - As Applicable

- | | | |
|----------------|----------------------|--------------------|
| Access | Balcony Access | ** Vertical Screen |
| F Fridge Space | IF Integrated Fridge | SL Skylight |
| P Pantry | S Storage | SY Study |
| O Oven Stack | L Linen | |
| M Media | K King Bed | |



This floor plan was produced prior to construction and while the information contained herein is believed to be correct it is not guaranteed. Changes will undoubtedly be made in accordance with the contract for sale. The plan does not show additional features such as hot water systems, services or bulkheads necessary for services. Dimensions, areas and scale of floor plans are approximate only. Dimensions are measured, and areas are calculated, in accordance with the Australian Property Institute Method of Measurement effective at the date of preparation of the Floor Plan. The furniture and furnishings depicted are not included with any sale. Purchasers must refer to the contract for sale for the list of inclusions. Furnishings should not be taken to indicate the final position of power points, TV connection points and the like. Bed sizes shown are indicative only and not guaranteed. All graphics, including design and extent of tile/paver/carpet areas, landscaping, balustrades, louvres, sun shading, fencing, privacy screens, services equipment and wintergardens are for illustrative purposes only and are not to be relied on as a representative of the final product. All level changes in the courtyards may not be shown.



LEVEL 4

Apartment No. 438 Building EUCALYPT Lot No. 41

Colour Scheme
SUMMER

2 BEDROOM APARTMENT

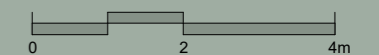
Internal Area 92 m²
Balcony Area 10 m²
Total Area 102 m²

Areas subject to change in accordance with the provisions of the contract. Area includes balcony and/or terrace where applicable. It excludes associated parking and external storage areas.

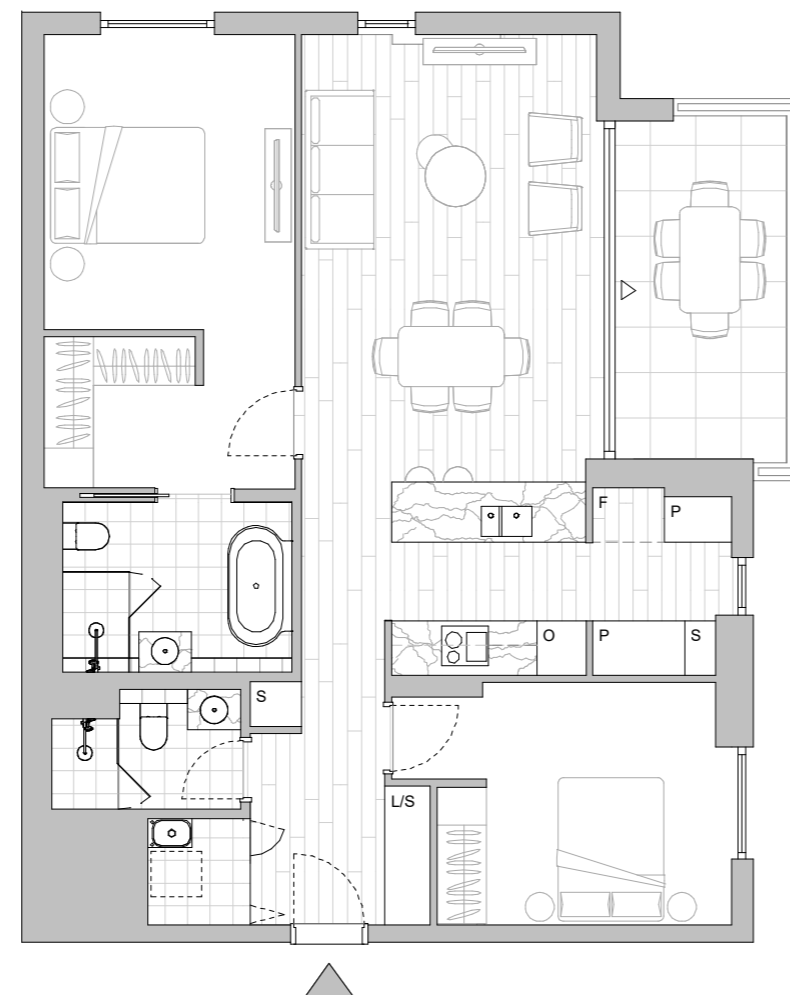


LEGEND - As Applicable

- | | | |
|----------------|----------------------|--------------------|
| ▲ Access | △ Balcony Access | ** Vertical Screen |
| F Fridge Space | IF Integrated Fridge | SL Skylight |
| P Pantry | S Storage | SY Study |
| O Oven Stack | L Linen | |
| M Media | K King Bed | |



This floor plan was produced prior to construction and while the information contained herein is believed to be correct it is not guaranteed. Changes will undoubtedly be made in accordance with the contract for sale. The plan does not show additional features such as hot water systems, services or bulkheads necessary for services. Dimensions, areas and scale of floor plans are approximate only. Dimensions are measured, and areas are calculated, in accordance with the Australian Property Institute Method of Measurement effective at the date of preparation of the Floor Plan. The furniture and furnishings depicted are not included with any sale. Purchasers must refer to the contract for sale for the list of inclusions. Furnishings should not be taken to indicate the final position of power points, TV connection points and the like. Bed sizes shown are indicative only and not guaranteed. All graphics, including design and extent of tile/paver/carpet areas, landscaping, balustrades, louvres, sun shading, fencing, privacy screens, services equipment and wintergardens are for illustrative purposes only and are not to be relied on as a representative of the final product. All level changes in the courtyards may not be shown.



LEVEL 4

HIGH FOREST

APARTMENTS

Apartment No. 439 Building EUCALYPT Lot No. 42

Colour Scheme
AUTUMN

2 BEDROOM APARTMENT

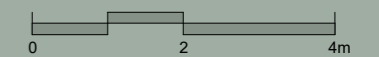
Internal Area 84 m²
Balcony Area 12 m²
Total Area 96 m²

Areas subject to change in accordance with the provisions of the contract. Area includes balcony and/or terrace where applicable. It excludes associated parking and external storage areas.

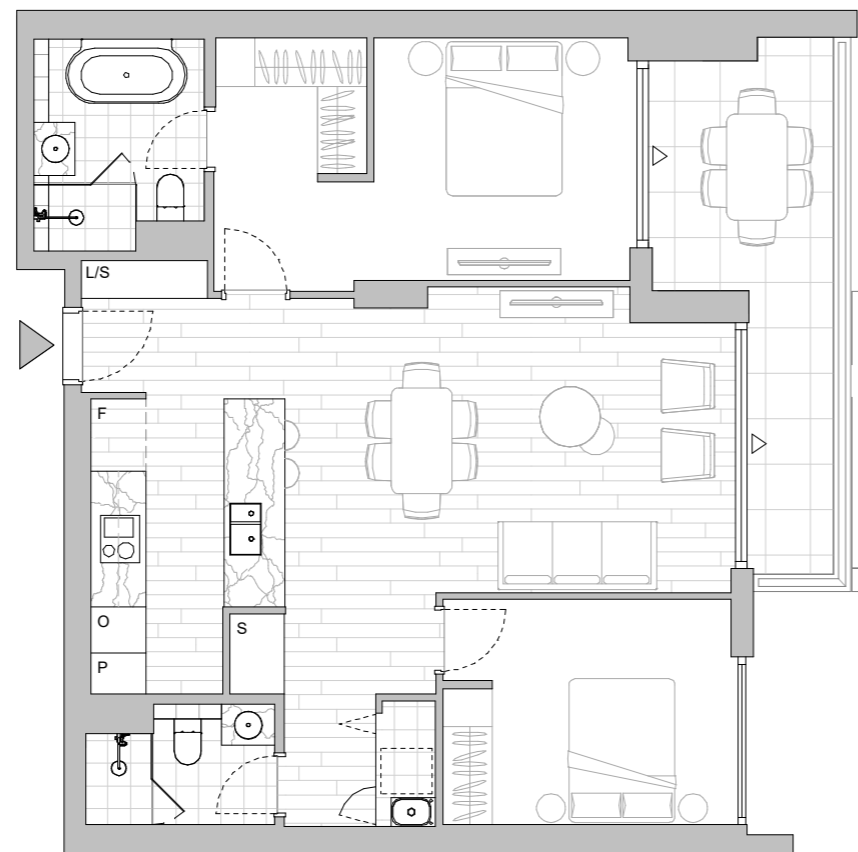


LEGEND - As Applicable

- | | | |
|----------------|----------------------|--------------------|
| ▲ Access | △ Balcony Access | ** Vertical Screen |
| F Fridge Space | IF Integrated Fridge | SL Skylight |
| P Pantry | S Storage | SY Study |
| O Oven Stack | L Linen | |
| M Media | K King Bed | |



This floor plan was produced prior to construction and while the information contained herein is believed to be correct it is not guaranteed. Changes will undoubtedly be made in accordance with the contract for sale. The plan does not show additional features such as hot water systems, services or bulkheads necessary for services. Dimensions, areas and scale of floor plans are approximate only. Dimensions are measured, and areas are calculated, in accordance with the Australian Property Institute Method of Measurement effective at the date of preparation of the Floor Plan. The furniture and furnishings depicted are not included with any sale. Purchasers must refer to the contract for sale for the list of inclusions. Furnishings should not be taken to indicate the final position of power points, TV connection points and the like. Bed sizes shown are indicative only and not guaranteed. All graphics, including design and extent of tile/paver/carpet areas, landscaping, balustrades, louvres, sun shading, fencing, privacy screens, services equipment and wintergardens are for illustrative purposes only and are not to be relied on as a representative of the final product. All level changes in the courtyards may not be shown.



LEVEL 4

HIGH FOREST

APARTMENTS

Apartment No. 531 Building EUCALYPT Lot No. 44

Colour Scheme
AUTUMN

2 BEDROOM APARTMENT

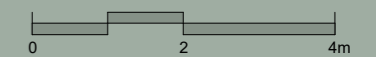
Internal Area 89 m²
Balcony Area 13 m²
Total Area 102 m²

Areas subject to change in accordance with the provisions of the contract. Area includes balcony and/or terrace where applicable. It excludes associated parking and external storage areas.

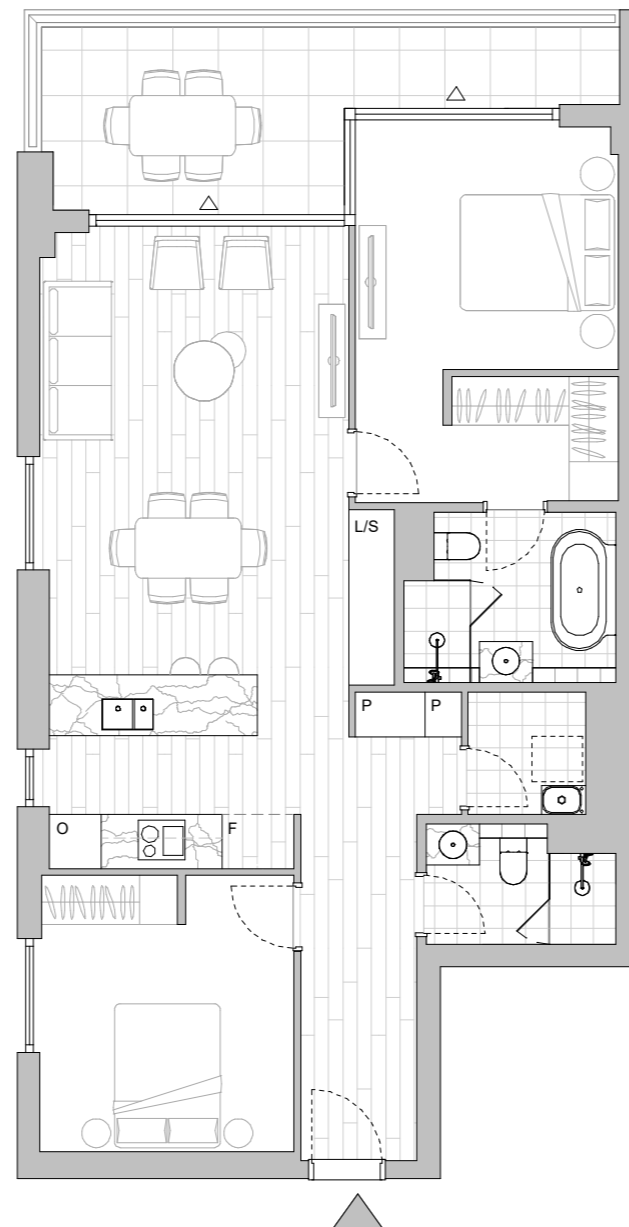


LEGEND - As Applicable

▲ Access	△ Balcony Access	** Vertical Screen
F Fridge Space	IF Integrated Fridge	SL Skylight
P Pantry	S Storage	SY Study
O Oven Stack	L Linen	
M Media	K King Bed	



This floor plan was produced prior to construction and while the information contained herein is believed to be correct it is not guaranteed. Changes will undoubtedly be made in accordance with the contract for sale. The plan does not show additional features such as hot water systems, services or bulkheads necessary for services. Dimensions, areas and scale of floor plans are approximate only. Dimensions are measured, and areas are calculated, in accordance with the Australian Property Institute Method of Measurement effective at the date of preparation of the Floor Plan. The furniture and furnishings depicted are not included with any sale. Purchasers must refer to the contract for sale for the list of inclusions. Furnishings should not be taken to indicate the final position of power points, TV connection points and the like. Bed sizes shown are indicative only and not guaranteed. All graphics, including design and extent of tile/paver/carpet areas, landscaping, balustrades, louvres, sun shading, fencing, privacy screens, services equipment and wintergardens are for illustrative purposes only and are not to be relied on as a representative of the final product. All level changes in the courtyards may not be shown.



LEVEL 5

HIGH FOREST

APARTMENTS

Apartment No. 532 Building EUCALYPT Lot No. 45

Colour Scheme
SUMMER

2 BEDROOM APARTMENT

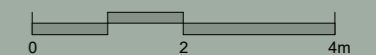
Internal Area 87 m²
Balcony Area 11 m²
Total Area 98 m²

Areas subject to change in accordance with the provisions of the contract. Area includes balcony and/or terrace where applicable. It excludes associated parking and external storage areas.

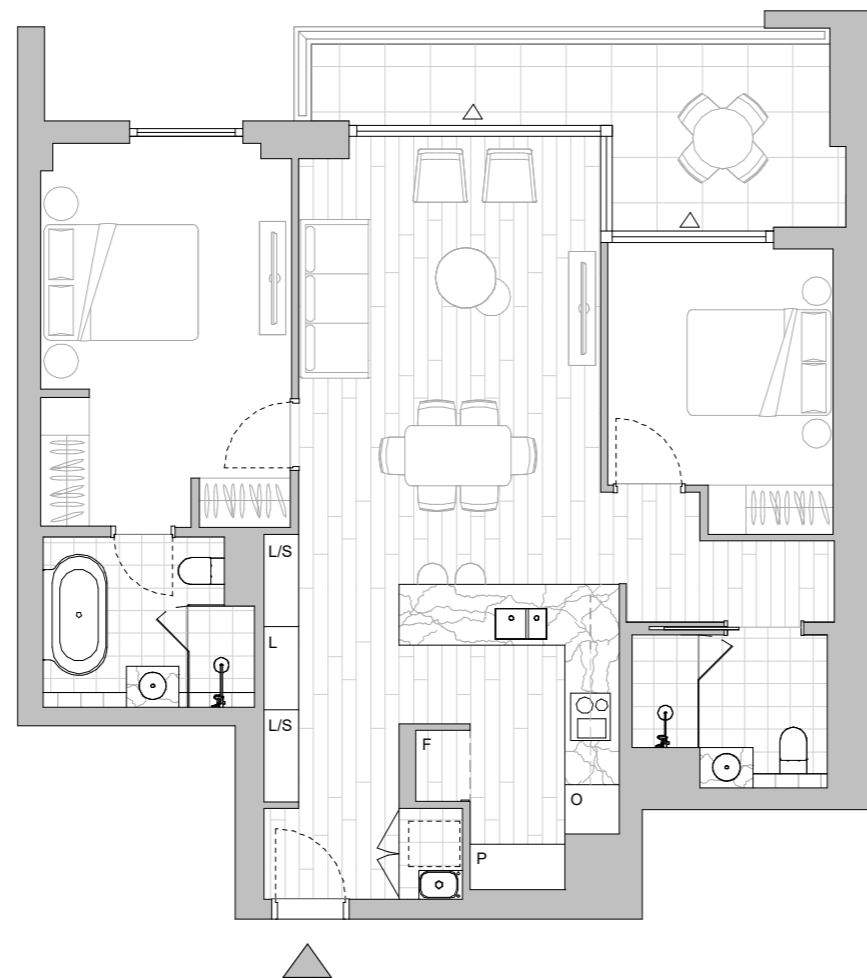


LEGEND - As Applicable

▲ Access	△ Balcony Access	** Vertical Screen
F Fridge Space	IF Integrated Fridge	SL Skylight
P Pantry	S Storage	SY Study
O Oven Stack	L Linen	
M Media	K King Bed	



This floor plan was produced prior to construction and while the information contained herein is believed to be correct it is not guaranteed. Changes will undoubtedly be made in accordance with the contract for sale. The plan does not show additional features such as hot water systems, services or bulkheads necessary for services. Dimensions, areas and scale of floor plans are approximate only. Dimensions are measured, and areas are calculated, in accordance with the Australian Property Institute Method of Measurement effective at the date of preparation of the Floor Plan. The furniture and furnishings depicted are not included with any sale. Purchasers must refer to the contract for sale for the list of inclusions. Furnishings should not be taken to indicate the final position of power points, TV connection points and the like. Bed sizes shown are indicative only and not guaranteed. All graphics, including design and extent of tile/paver/carpet areas, landscaping, balustrades, louvres, sun shading, fencing, privacy screens, services equipment and wintergardens are for illustrative purposes only and are not to be relied on as a representative of the final product. All level changes in the courtyards may not be shown.



LEVEL 5

HIGH FOREST

APARTMENTS

Apartment No. 533 Building EUCALYPT Lot No. 46

Colour Scheme
AUTUMN

2 BEDROOM + MEDIA APARTMENT

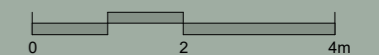
Internal Area 99 m²
Balcony Area 15 m²
Total Area 114 m²

Areas subject to change in accordance with the provisions of the contract. Area includes balcony and/or terrace where applicable. It excludes associated parking and external storage areas.

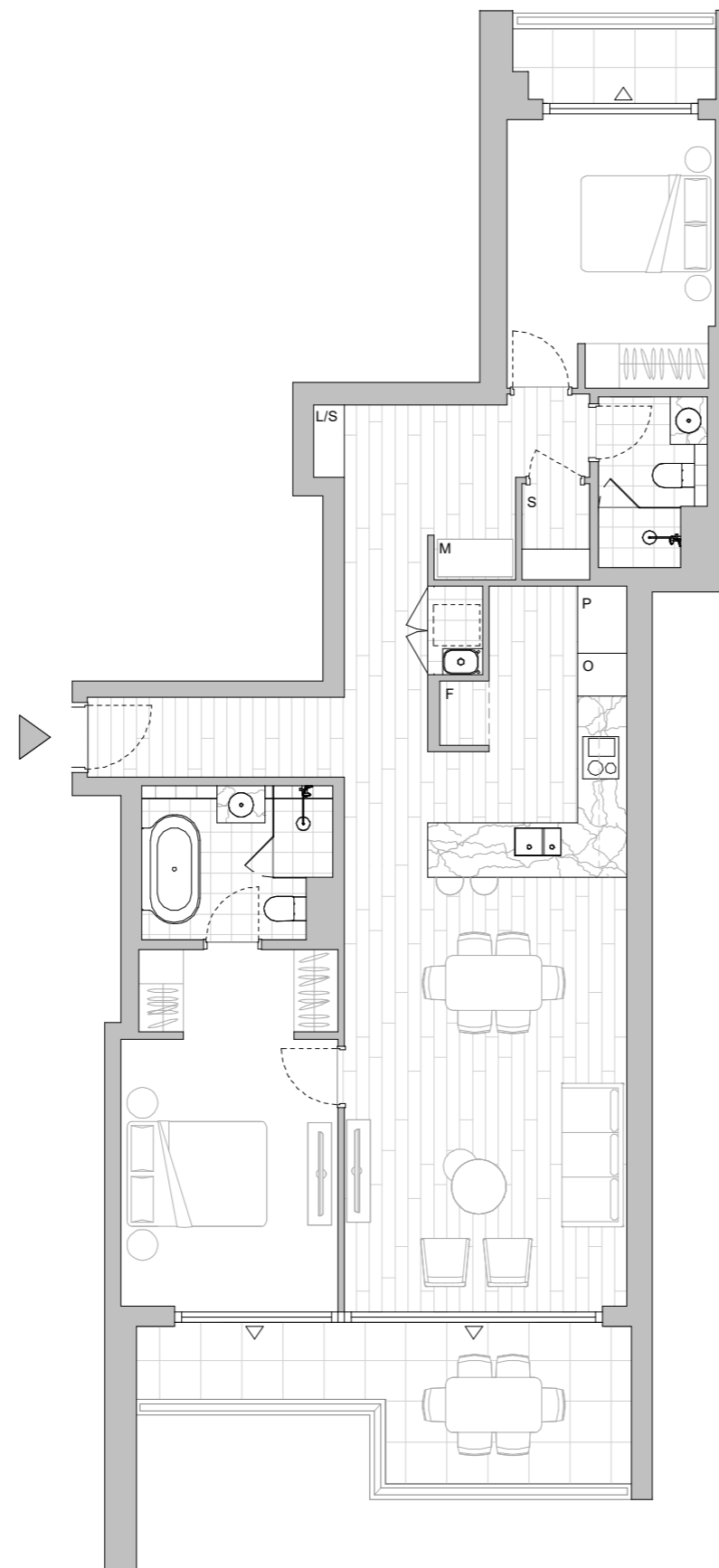


LEGEND - As Applicable

Access	Balcony Access	** Vertical Screen
F Fridge Space	IF Integrated Fridge	SL Skylight
P Pantry	S Storage	SY Study
O Oven Stack	L Linen	
M Media	K King Bed	



This floor plan was produced prior to construction and while the information contained herein is believed to be correct it is not guaranteed. Changes will undoubtedly be made in accordance with the contract for sale. The plan does not show additional features such as hot water systems, services or bulkheads necessary for services. Dimensions, areas and scale of floor plans are approximate only. Dimensions are measured, and areas are calculated, in accordance with the Australian Property Institute Method of Measurement effective at the date of preparation of the Floor Plan. The furniture and furnishings depicted are not included with any sale. Purchasers must refer to the contract for sale for the list of inclusions. Furnishings should not be taken to indicate the final position of power points, TV connection points and the like. Bed sizes shown are indicative only and not guaranteed. All graphics, including design and extent of tile/paver/carpet areas, landscaping, balustrades, louvres, sun shading, fencing, privacy screens, services equipment and wintergardens are for illustrative purposes only and are not to be relied on as a representative of the final product. All level changes in the courtyards may not be shown.



LEVEL 5

HIGH FOREST

APARTMENTS

Apartment No. 535 Building EUCALYPT Lot No. 48

Colour Scheme
SUMMER

2 BEDROOM APARTMENT

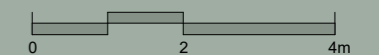
Internal Area 94 m²
Balcony Area 15 m²
Total Area 109 m²

Areas subject to change in accordance with the provisions of the contract. Area includes balcony and/or terrace where applicable. It excludes associated parking and external storage areas.

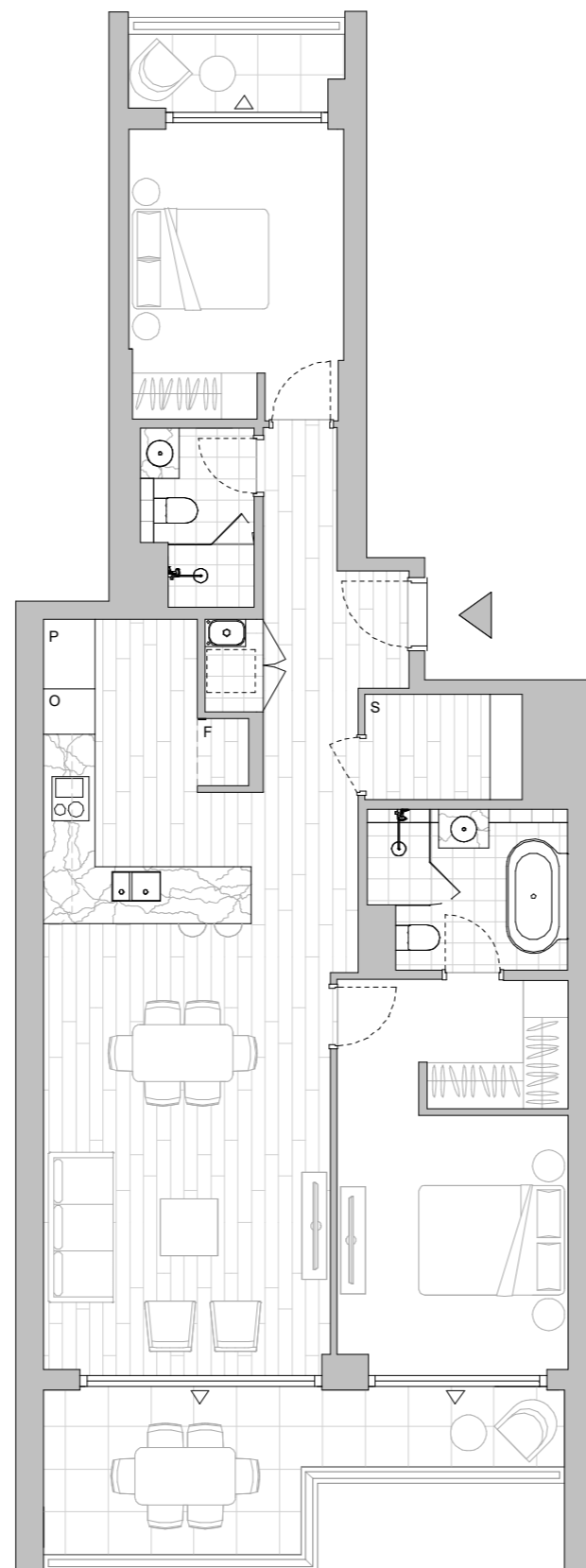


LEGEND - As Applicable

- | | | |
|----------------|----------------------|--------------------|
| Access | Balcony Access | ** Vertical Screen |
| F Fridge Space | IF Integrated Fridge | SL Skylight |
| P Pantry | S Storage | SY Study |
| O Oven Stack | L Linen | |
| M Media | K King Bed | |



This floor plan was produced prior to construction and while the information contained herein is believed to be correct it is not guaranteed. Changes will undoubtedly be made in accordance with the contract for sale. The plan does not show additional features such as hot water systems, services or bulkheads necessary for services. Dimensions, areas and scale of floor plans are approximate only. Dimensions are measured, and areas are calculated, in accordance with the Australian Property Institute Method of Measurement effective at the date of preparation of the Floor Plan. The furniture and furnishings depicted are not included with any sale. Purchasers must refer to the contract for sale for the list of inclusions. Furnishings should not be taken to indicate the final position of power points, TV connection points and the like. Bed sizes shown are indicative only and not guaranteed. All graphics, including design and extent of tile/paver/carpet areas, landscaping, balustrades, louvres, sun shading, fencing, privacy screens, services equipment and wintergardens are for illustrative purposes only and are not to be relied on as a representative of the final product. All level changes in the courtyards may not be shown.



LEVEL 5

HIGH FOREST

APARTMENTS

Apartment No. 538 Building EUCALYPT Lot No. 51

Colour Scheme
AUTUMN

2 BEDROOM APARTMENT

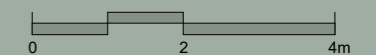
Internal Area 92 m²
Balcony Area 10 m²
Total Area 102 m²

Areas subject to change in accordance with the provisions of the contract. Area includes balcony and/or terrace where applicable. It excludes associated parking and external storage areas.

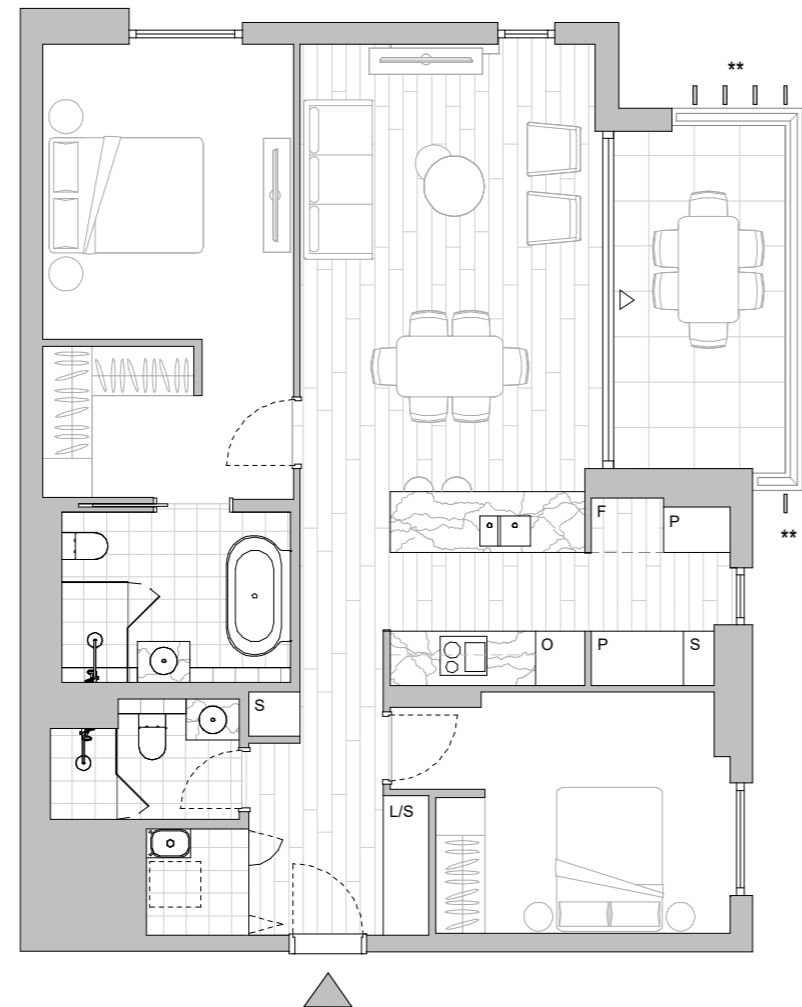


LEGEND - As Applicable

Access	Balcony Access	Vertical Screen
F Fridge Space	IF Integrated Fridge	SL Skylight
P Pantry	S Storage	SY Study
O Oven Stack	L Linen	
M Media	K King Bed	



This floor plan was produced prior to construction and while the information contained herein is believed to be correct it is not guaranteed. Changes will undoubtedly be made in accordance with the contract for sale. The plan does not show additional features such as hot water systems, services or bulkheads necessary for services. Dimensions, areas and scale of floor plans are approximate only. Dimensions are measured, and areas are calculated, in accordance with the Australian Property Institute Method of Measurement effective at the date of preparation of the Floor Plan. The furniture and furnishings depicted are not included with any sale. Purchasers must refer to the contract for sale for the list of inclusions. Furnishings should not be taken to indicate the final position of power points, TV connection points and the like. Bed sizes shown are indicative only and not guaranteed. All graphics, including design and extent of tile/paver/carpet areas, landscaping, balustrades, louvres, sun shading, fencing, privacy screens, services equipment and wintergardens are for illustrative purposes only and are not to be relied on as a representative of the final product. All level changes in the courtyards may not be shown.



LEVEL 5

HIGH FOREST

APARTMENTS

Apartment No. 539 Building EUCALYPT Lot No. 52

Colour Scheme
SUMMER

2 BEDROOM APARTMENT

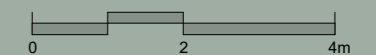
Internal Area 84 m²
Balcony Area 12 m²
Total Area 96 m²

Areas subject to change in accordance with the provisions of the contract. Area includes balcony and/or terrace where applicable. It excludes associated parking and external storage areas.

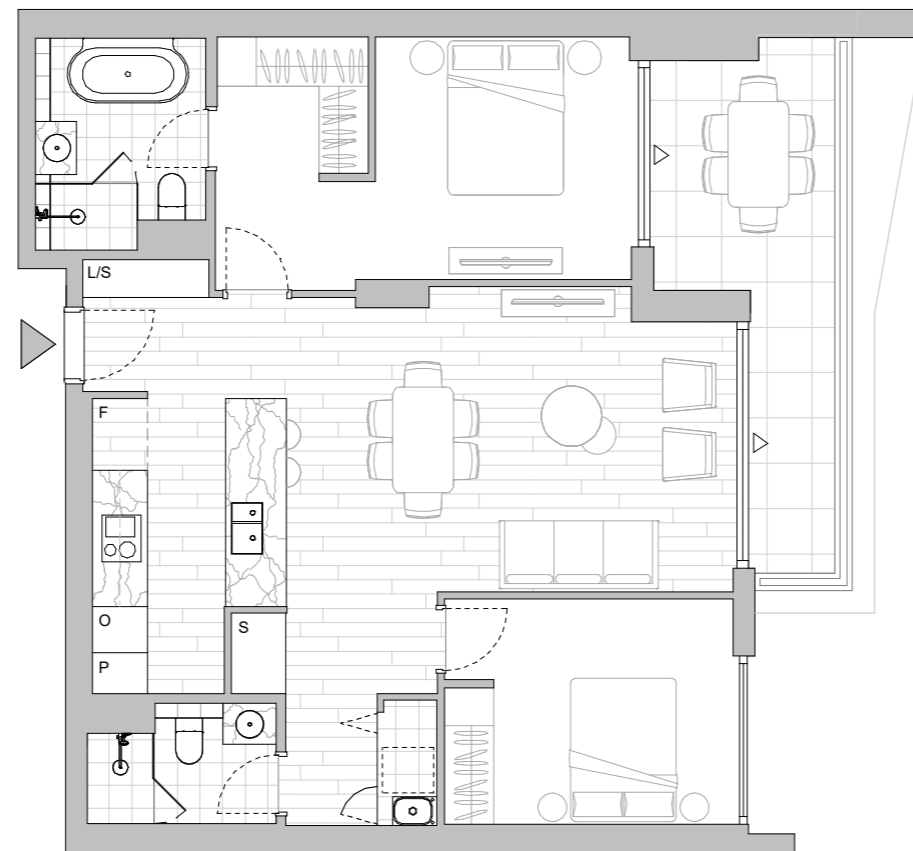


LEGEND - As Applicable

Access	Balcony Access	Vertical Screen
F Fridge Space	IF Integrated Fridge	SL Skylight
P Pantry	S Storage	SY Study
O Oven Stack	L Linen	
M Media	K King Bed	



This floor plan was produced prior to construction and while the information contained herein is believed to be correct it is not guaranteed. Changes will undoubtedly be made in accordance with the contract for sale. The plan does not show additional features such as hot water systems, services or bulkheads necessary for services. Dimensions, areas and scale of floor plans are approximate only. Dimensions are measured, and areas are calculated, in accordance with the Australian Property Institute Method of Measurement effective at the date of preparation of the Floor Plan. The furniture and furnishings depicted are not included with any sale. Purchasers must refer to the contract for sale for the list of inclusions. Furnishings should not be taken to indicate the final position of power points, TV connection points and the like. Bed sizes shown are indicative only and not guaranteed. All graphics, including design and extent of tile/paver/carpet areas, landscaping, balustrades, louvres, sun shading, fencing, privacy screens, services equipment and wintergardens are for illustrative purposes only and are not to be relied on as a representative of the final product. All level changes in the courtyards may not be shown.



LEVEL 5

HIGH FOREST

APARTMENTS

Apartment No. 624 Building EUCALYPT Lot No. 54

Colour Scheme
SUMMER

2 BEDROOM APARTMENT

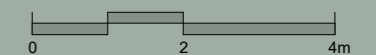
Internal Area 89 m²
Balcony Area 13 m²
Total Area 102 m²

Areas subject to change in accordance with the provisions of the contract. Area includes balcony and/or terrace where applicable. It excludes associated parking and external storage areas.

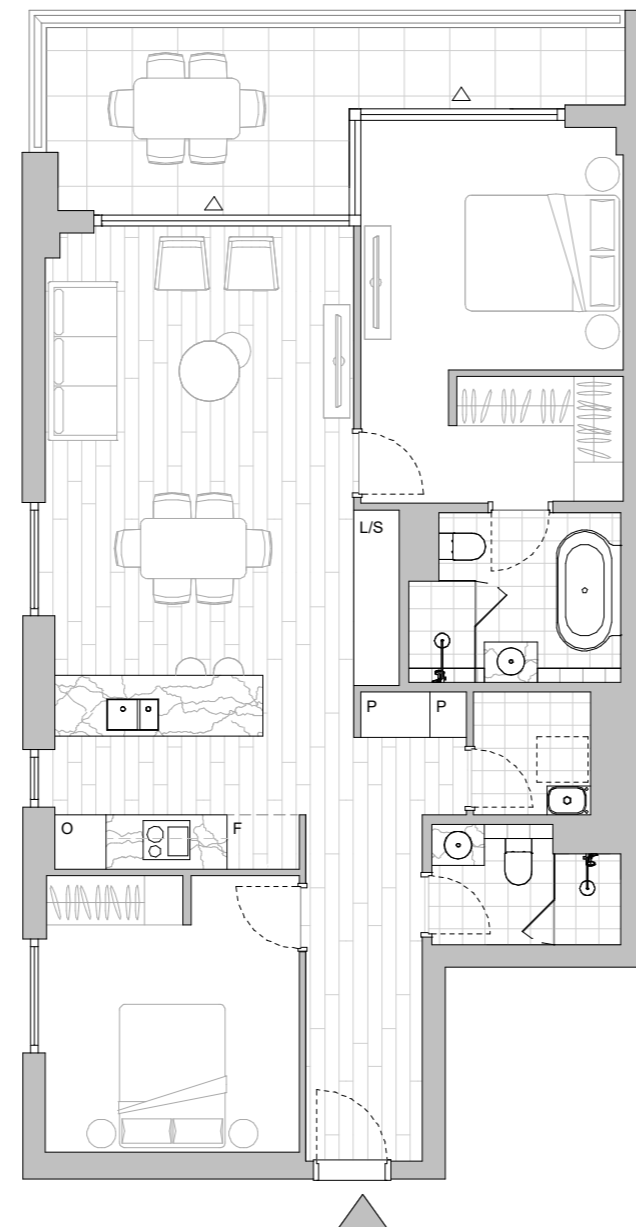


LEGEND - As Applicable

▲ Access	△ Balcony Access	** Vertical Screen
F Fridge Space	IF Integrated Fridge	SL Skylight
P Pantry	S Storage	SY Study
O Oven Stack	L Linen	
M Media	K King Bed	



This floor plan was produced prior to construction and while the information contained herein is believed to be correct it is not guaranteed. Changes will undoubtedly be made in accordance with the contract for sale. The plan does not show additional features such as hot water systems, services or bulkheads necessary for services. Dimensions, areas and scale of floor plans are approximate only. Dimensions are measured, and areas are calculated, in accordance with the Australian Property Institute Method of Measurement effective at the date of preparation of the Floor Plan. The furniture and furnishings depicted are not included with any sale. Purchasers must refer to the contract for sale for the list of inclusions. Furnishings should not be taken to indicate the final position of power points, TV connection points and the like. Bed sizes shown are indicative only and not guaranteed. All graphics, including design and extent of tile/paver/carpet areas, landscaping, balustrades, louvres, sun shading, fencing, privacy screens, services equipment and wintergardens are for illustrative purposes only and are not to be relied on as a representative of the final product. All level changes in the courtyards may not be shown.



LEVEL 6

HIGH FOREST

APARTMENTS

Apartment No. 625 Building EUCALYPT Lot No. 55

Colour Scheme
AUTUMN

2 BEDROOM APARTMENT

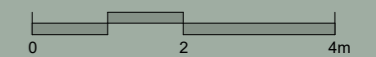
Internal Area 87 m²
Balcony Area 11 m²
Total Area 98 m²

Areas subject to change in accordance with the provisions of the contract. Area includes balcony and/or terrace where applicable. It excludes associated parking and external storage areas.

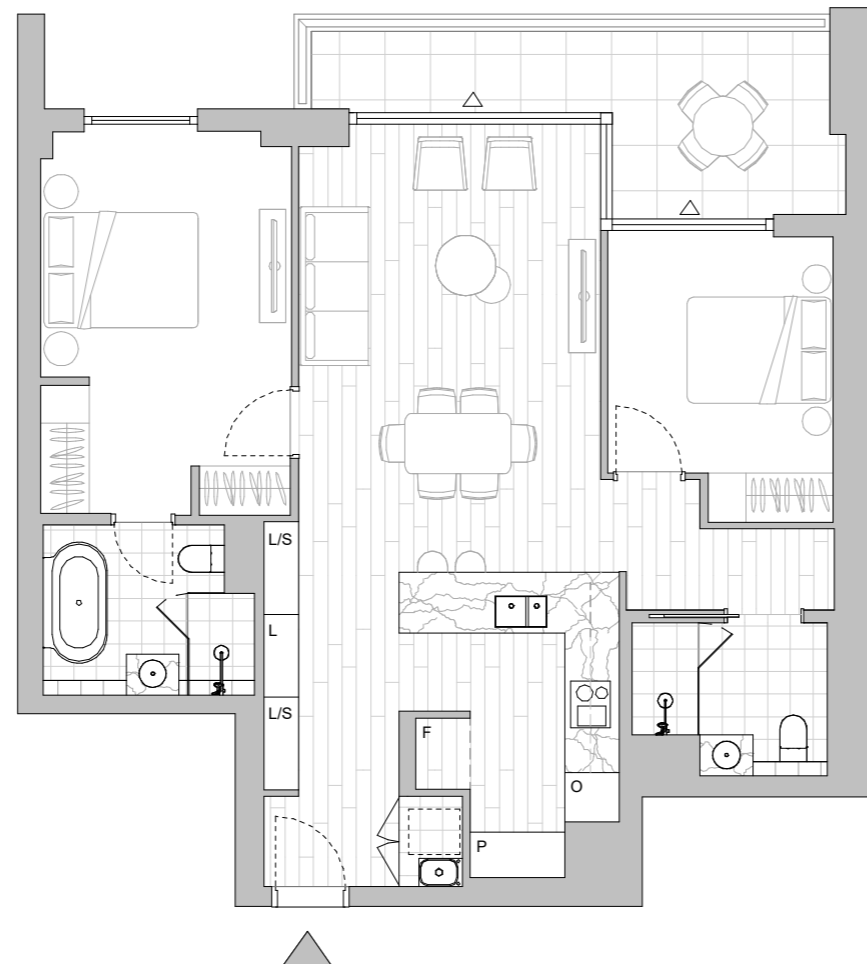


LEGEND - As Applicable

- | | | |
|----------------|----------------------|--------------------|
| ▲ Access | △ Balcony Access | ** Vertical Screen |
| F Fridge Space | IF Integrated Fridge | SL Skylight |
| P Pantry | S Storage | SY Study |
| O Oven Stack | L Linen | |
| M Media | K King Bed | |



This floor plan was produced prior to construction and while the information contained herein is believed to be correct it is not guaranteed. Changes will undoubtedly be made in accordance with the contract for sale. The plan does not show additional features such as hot water systems, services or bulkheads necessary for services. Dimensions, areas and scale of floor plans are approximate only. Dimensions are measured, and areas are calculated, in accordance with the Australian Property Institute Method of Measurement effective at the date of preparation of the Floor Plan. The furniture and furnishings depicted are not included with any sale. Purchasers must refer to the contract for sale for the list of inclusions. Furnishings should not be taken to indicate the final position of power points, TV connection points and the like. Bed sizes shown are indicative only and not guaranteed. All graphics, including design and extent of tile/paver/carpet areas, landscaping, balustrades, louvres, sun shading, fencing, privacy screens, services equipment and wintergardens are for illustrative purposes only and are not to be relied on as a representative of the final product. All level changes in the courtyards may not be shown.



LEVEL 6

HIGH FOREST

APARTMENTS

Apartment No. 626 Building EUCALYPT Lot No. 56

Colour Scheme
SUMMER

2 BEDROOM + MEDIA APARTMENT

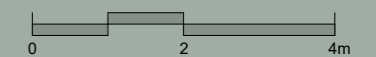
Internal Area 99 m²
Balcony Area 15 m²
Total Area 114 m²

Areas subject to change in accordance with the provisions of the contract. Area includes balcony and/or terrace where applicable. It excludes associated parking and external storage areas.

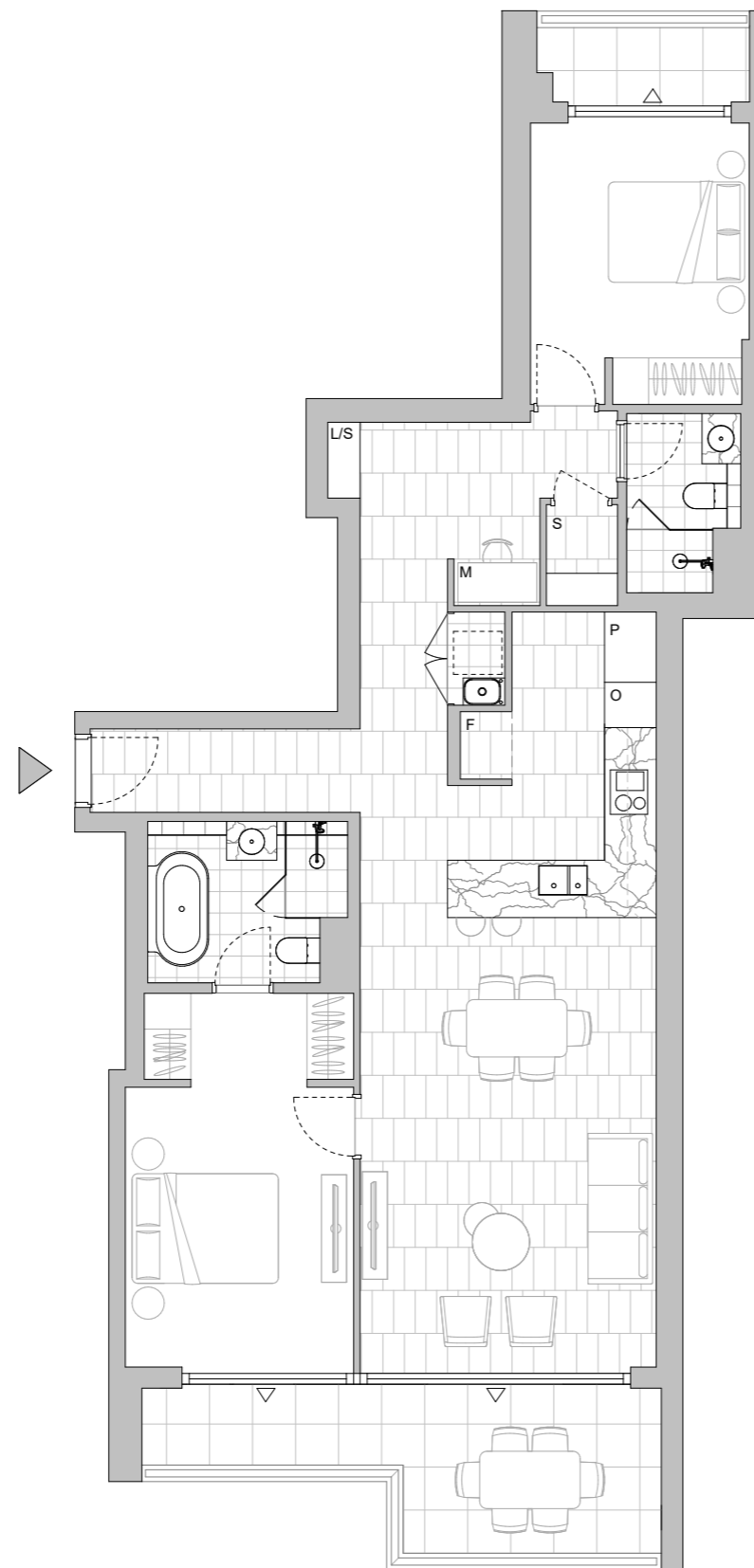


LEGEND - As Applicable

Access	Balcony Access	Vertical Screen
F Fridge Space	IF Integrated Fridge	SL Skylight
P Pantry	S Storage	SY Study
O Oven Stack	L Linen	
M Media	K King Bed	



This floor plan was produced prior to construction and while the information contained herein is believed to be correct it is not guaranteed. Changes will undoubtedly be made in accordance with the contract for sale. The plan does not show additional features such as hot water systems, services or bulkheads necessary for services. Dimensions, areas and scale of floor plans are approximate only. Dimensions are measured, and areas are calculated, in accordance with the Australian Property Institute Method of Measurement effective at the date of preparation of the Floor Plan. The furniture and furnishings depicted are not included with any sale. Purchasers must refer to the contract for sale for the list of inclusions. Furnishings should not be taken to indicate the final position of power points, TV connection points and the like. Bed sizes shown are indicative only and not guaranteed. All graphics, including design and extent of tile/paver/carpet areas, landscaping, balustrades, louvres, sun shading, fencing, privacy screens, services equipment and wintergardens are for illustrative purposes only and are not to be relied on as a representative of the final product. All level changes in the courtyards may not be shown.



LEVEL 6

HIGH FOREST

APARTMENTS

Apartment No. 628 Building EUCALYPT Lot No. 58

Colour Scheme
AUTUMN

2 BEDROOM APARTMENT

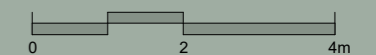
Internal Area 94 m²
Balcony Area 15 m²
Total Area 109 m²

Areas subject to change in accordance with the provisions of the contract. Area includes balcony and/or terrace where applicable. It excludes associated parking and external storage areas.

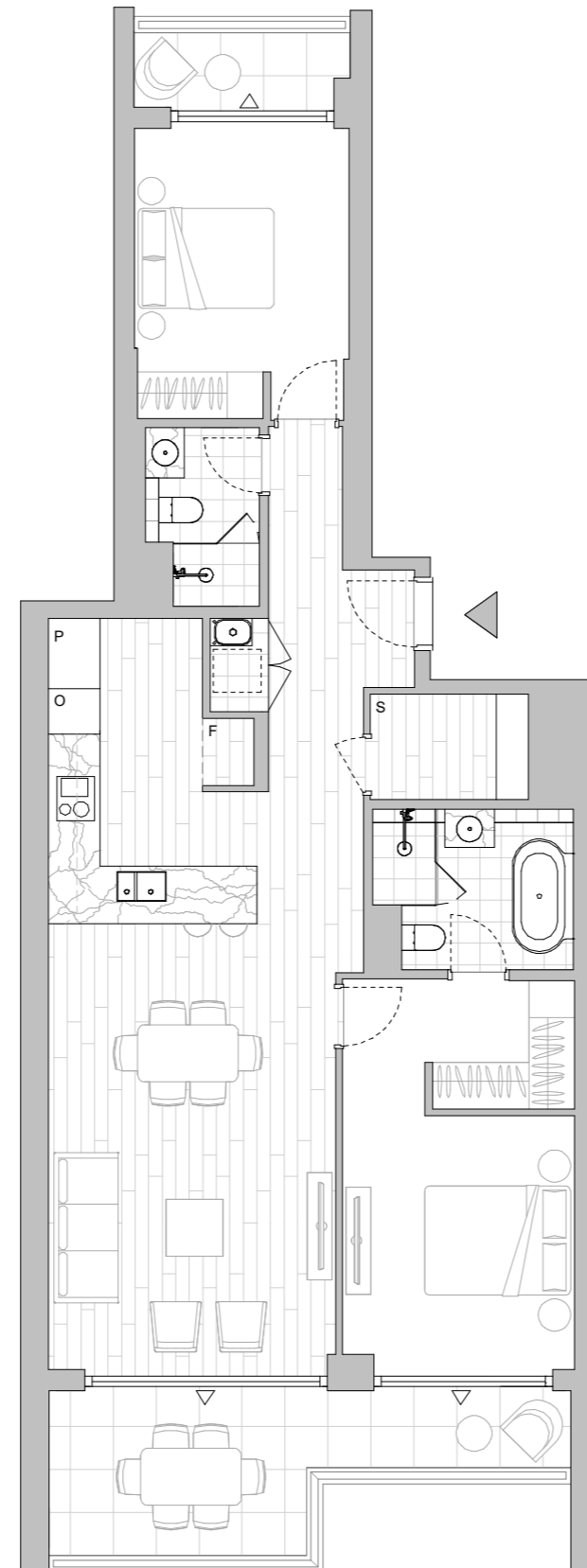


LEGEND - As Applicable

- | | | |
|----------------|----------------------|--------------------|
| Access | Balcony Access | ** Vertical Screen |
| F Fridge Space | IF Integrated Fridge | SL Skylight |
| P Pantry | S Storage | SY Study |
| O Oven Stack | L Linen | |
| M Media | K King Bed | |



This floor plan was produced prior to construction and while the information contained herein is believed to be correct it is not guaranteed. Changes will undoubtedly be made in accordance with the contract for sale. The plan does not show additional features such as hot water systems, services or bulkheads necessary for services. Dimensions, areas and scale of floor plans are approximate only. Dimensions are measured, and areas are calculated, in accordance with the Australian Property Institute Method of Measurement effective at the date of preparation of the Floor Plan. The furniture and furnishings depicted are not included with any sale. Purchasers must refer to the contract for sale for the list of inclusions. Furnishings should not be taken to indicate the final position of power points, TV connection points and the like. Bed sizes shown are indicative only and not guaranteed. All graphics, including design and extent of tile/paver/carpet areas, landscaping, balustrades, louvres, sun shading, fencing, privacy screens, services equipment and wintergardens are for illustrative purposes only and are not to be relied on as a representative of the final product. All level changes in the courtyards may not be shown.



LEVEL 6

HIGH FOREST

APARTMENTS

Apartment No. 631 Building EUCALYPT Lot No. 61

Colour Scheme
SUMMER

2 BEDROOM APARTMENT

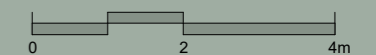
Internal Area 93 m²
Balcony Area 10 m²
Total Area 103 m²

Areas subject to change in accordance with the provisions of the contract. Area includes balcony and/or terrace where applicable. It excludes associated parking and external storage areas.

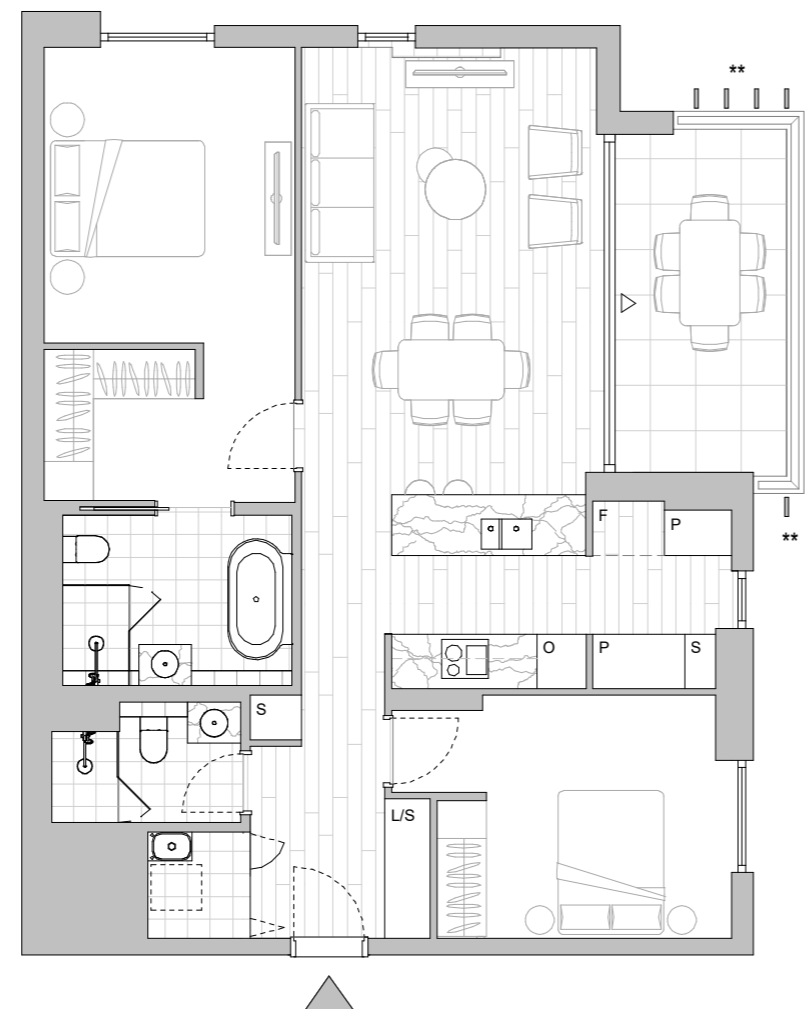


LEGEND - As Applicable

- | | | |
|----------------|----------------------|-----------------|
| Access | Balcony Access | Vertical Screen |
| F Fridge Space | IF Integrated Fridge | SL Skylight |
| P Pantry | S Storage | SY Study |
| O Oven Stack | L Linen | |
| M Media | K King Bed | |



This floor plan was produced prior to construction and while the information contained herein is believed to be correct it is not guaranteed. Changes will undoubtedly be made in accordance with the contract for sale. The plan does not show additional features such as hot water systems, services or bulkheads necessary for services. Dimensions, areas and scale of floor plans are approximate only. Dimensions are measured, and areas are calculated, in accordance with the Australian Property Institute Method of Measurement effective at the date of preparation of the Floor Plan. The furniture and furnishings depicted are not included with any sale. Purchasers must refer to the contract for sale for the list of inclusions. Furnishings should not be taken to indicate the final position of power points, TV connection points and the like. Bed sizes shown are indicative only and not guaranteed. All graphics, including design and extent of tile/paver/carpet areas, landscaping, balustrades, louvres, sun shading, fencing, privacy screens, services equipment and wintergardens are for illustrative purposes only and are not to be relied on as a representative of the final product. All level changes in the courtyards may not be shown.



LEVEL 6

HIGHFOREST

APARTMENTS

Apartment No. 632 Building EUCALYPT Lot No. 62

Colour Scheme
AUTUMN

2 BEDROOM APARTMENT

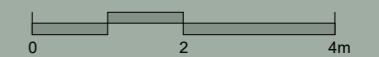
Internal Area 84 m²
Balcony Area 12 m²
Total Area 96 m²

Areas subject to change in accordance with the provisions of the contract. Area includes balcony and/or terrace where applicable. It excludes associated parking and external storage areas.



LEGEND - As Applicable

Access	Balcony Access	Vertical Screen
F Fridge Space	IF Integrated Fridge	SL Skylight
P Pantry	S Storage	SY Study
O Oven Stack	L Linen	
M Media	K King Bed	



This floor plan was produced prior to construction and while the information contained herein is believed to be correct it is not guaranteed. Changes will undoubtedly be made in accordance with the contract for sale. The plan does not show additional features such as hot water systems, services or bulkheads necessary for services. Dimensions, areas and scale of floor plans are approximate only. Dimensions are measured, and areas are calculated, in accordance with the Australian Property Institute Method of Measurement effective at the date of preparation of the Floor Plan. The furniture and furnishings depicted are not included with any sale. Purchasers must refer to the contract for sale for the list of inclusions. Furnishings should not be taken to indicate the final position of power points, TV connection points and the like. Bed sizes shown are indicative only and not guaranteed. All graphics, including design and extent of tile/paver/carpet areas, landscaping, balustrades, louvres, sun shading, fencing, privacy screens, services equipment and wintergardens are for illustrative purposes only and are not to be relied on as a representative of the final product. All level changes in the courtyards may not be shown.



LEVEL 6

HIGH FOREST

APARTMENTS

Apartment No. 721 Building EUCALYPT Lot No. 65

Colour Scheme
AUTUMN

2 BEDROOM + MEDIA APARTMENT

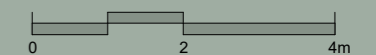
Internal Area 98 m²
Balcony Area 15 m²
Total Area 113 m²

Areas subject to change in accordance with the provisions of the contract. Area includes balcony and/or terrace where applicable. It excludes associated parking and external storage areas.

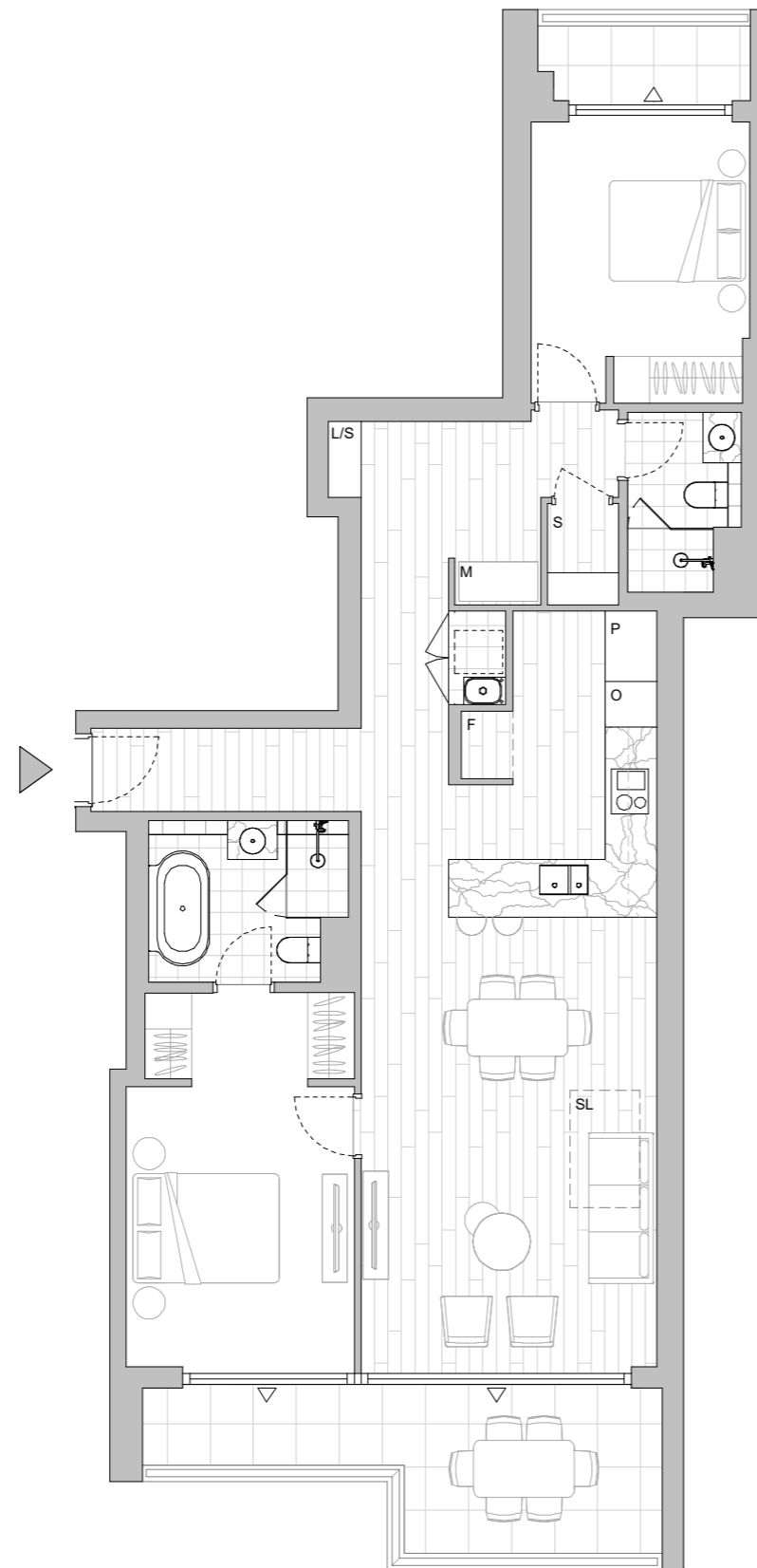


LEGEND - As Applicable

Access	Balcony Access	** Vertical Screen
F Fridge Space	IF Integrated Fridge	SL Skylight
P Pantry	S Storage	SY Study
O Oven Stack	L Linen	
M Media	K King Bed	



This floor plan was produced prior to construction and while the information contained herein is believed to be correct it is not guaranteed. Changes will undoubtedly be made in accordance with the contract for sale. The plan does not show additional features such as hot water systems, services or bulkheads necessary for services. Dimensions, areas and scale of floor plans are approximate only. Dimensions are measured, and areas are calculated, in accordance with the Australian Property Institute Method of Measurement effective at the date of preparation of the Floor Plan. The furniture and furnishings depicted are not included with any sale. Purchasers must refer to the contract for sale for the list of inclusions. Furnishings should not be taken to indicate the final position of power points, TV connection points and the like. Bed sizes shown are indicative only and not guaranteed. All graphics, including design and extent of tile/paver/carpet areas, landscaping, balustrades, louvres, sun shading, fencing, privacy screens, services equipment and wintergardens are for illustrative purposes only and are not to be relied on as a representative of the final product. All level changes in the courtyards may not be shown.



LEVEL 7