

# HIGH FOREST

## APARTMENTS

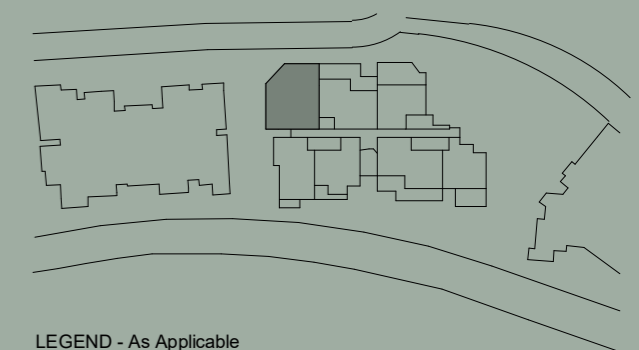
Apartment No. 110 Building GRANDIS Lot No. 06

Colour Scheme  
SUMMER

### 2 BEDROOM APARTMENT

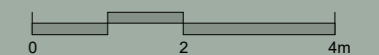
Internal Area 90 m<sup>2</sup>  
Balcony Area 74 m<sup>2</sup>  
Total Area 164 m<sup>2</sup>

Areas subject to change in accordance with the provisions of the contract. Area includes balcony and/or terrace where applicable. It excludes associated parking and external storage areas.

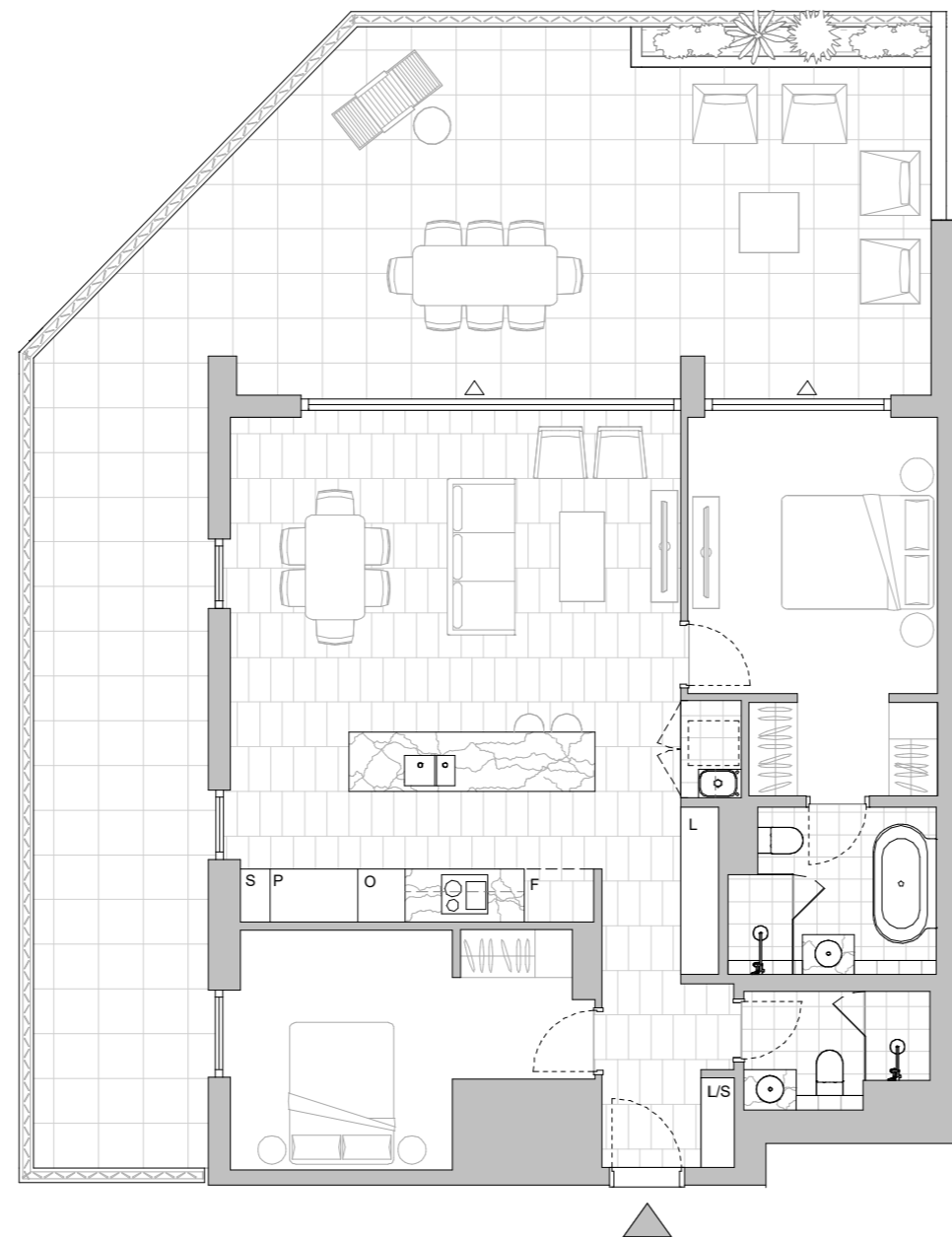


#### LEGEND - As Applicable

|                |                      |                    |
|----------------|----------------------|--------------------|
| ▲ Access       | △ Balcony Access     | ** Vertical Screen |
| F Fridge Space | IF Integrated Fridge | SL Skylight        |
| P Pantry       | S Storage            | SY Study           |
| O Oven Stack   | L Linen              |                    |
| M Media        | K King Bed           |                    |



This floor plan was produced prior to construction and while the information contained herein is believed to be correct it is not guaranteed. Changes will undoubtedly be made in accordance with the contract for sale. The plan does not show additional features such as hot water systems, services or bulkheads necessary for services. Dimensions, areas and scale of floor plans are approximate only. Dimensions are measured, and areas are calculated, in accordance with the Australian Property Institute Method of Measurement effective at the date of preparation of the Floor Plan. The furniture and furnishings depicted are not included with any sale. Purchasers must refer to the contract for sale for the list of inclusions. Furnishings should not be taken to indicate the final position of power points, TV connection points and the like. Bed sizes shown are indicative only and not guaranteed. All graphics, including design and extent of tile/paver/carpet areas, landscaping, balustrades, louvres, sun shading, fencing, privacy screens, services equipment and wintergardens are for illustrative purposes only and are not to be relied on as a representative of the final product. All level changes in the courtyards may not be shown.



LEVEL 1

# HIGH FOREST

## APARTMENTS

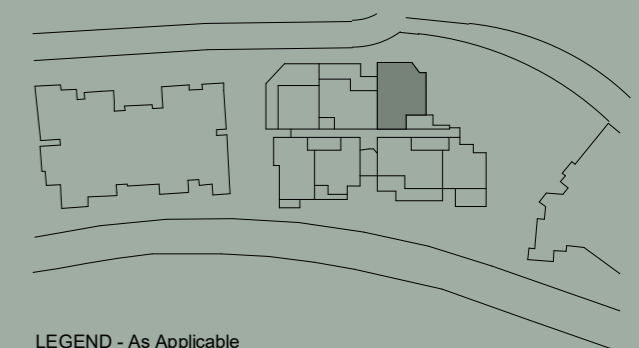
Apartment No. 112 Building GRANDIS Lot No. 08

Colour Scheme  
SUMMER

### 2 BEDROOM + MEDIA APARTMENT

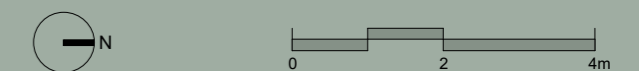
Internal Area 95 m<sup>2</sup>  
Balcony Area 42 m<sup>2</sup>  
Total Area 137 m<sup>2</sup>

Areas subject to change in accordance with the provisions of the contract. Area includes balcony and/or terrace where applicable. It excludes associated parking and external storage areas.

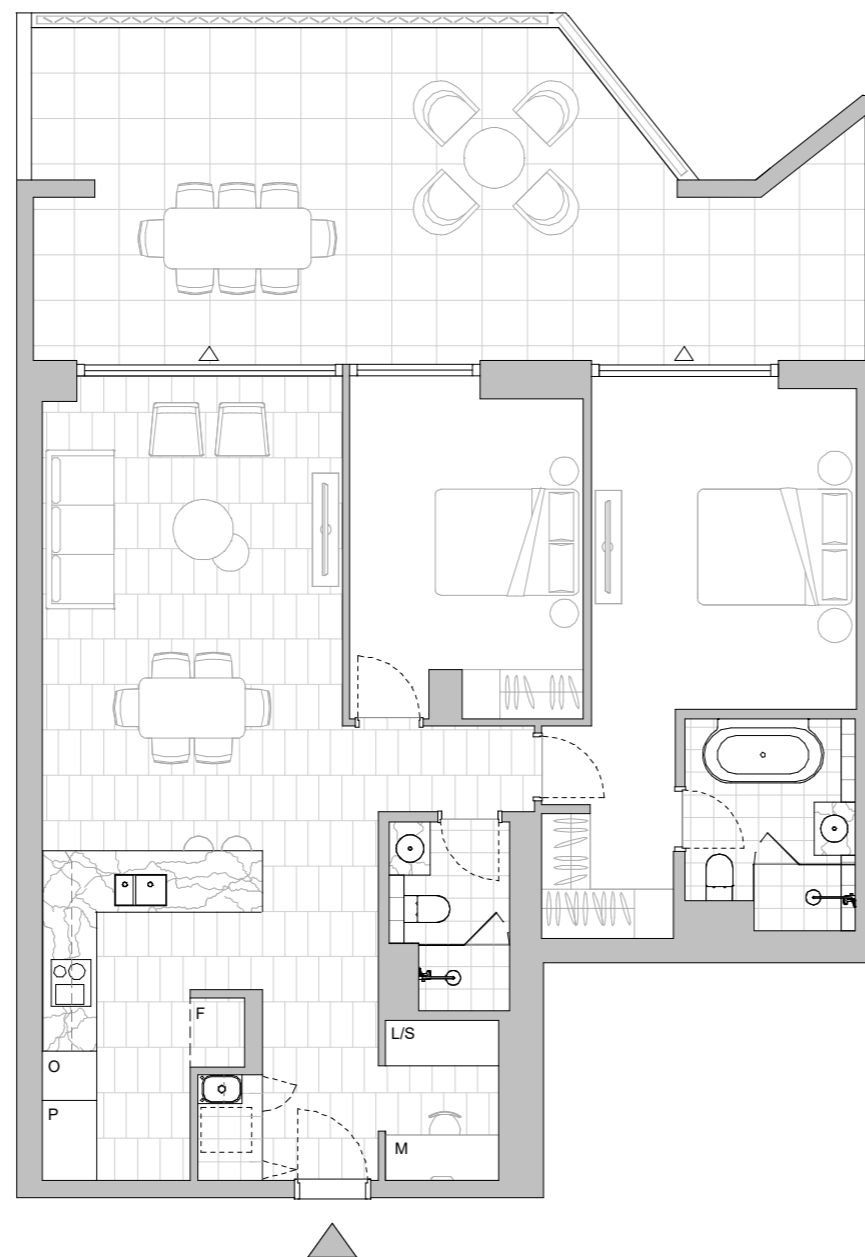


#### LEGEND - As Applicable

- |                |                      |                    |
|----------------|----------------------|--------------------|
| ▲ Access       | △ Balcony Access     | ** Vertical Screen |
| F Fridge Space | IF Integrated Fridge | SL Skylight        |
| P Pantry       | S Storage            | SY Study           |
| O Oven Stack   | L Linen              |                    |
| M Media        | K King Bed           |                    |



This floor plan was produced prior to construction and while the information contained herein is believed to be correct it is not guaranteed. Changes will undoubtedly be made in accordance with the contract for sale. The plan does not show additional features such as hot water systems, services or bulkheads necessary for services. Dimensions, areas and scale of floor plans are approximate only. Dimensions are measured, and areas are calculated, in accordance with the Australian Property Institute Method of Measurement effective at the date of preparation of the Floor Plan. The furniture and furnishings depicted are not included with any sale. Purchasers must refer to the contract for sale for the list of inclusions. Furnishings should not be taken to indicate the final position of power points, TV connection points and the like. Bed sizes shown are indicative only and not guaranteed. All graphics, including design and extent of tile/paver/carpet areas, landscaping, balustrades, louvres, sun shading, fencing, privacy screens, services equipment and wintergardens are for illustrative purposes only and are not to be relied on as a representative of the final product. All level changes in the courtyards may not be shown.



LEVEL 1

# HIGH FOREST

## APARTMENTS

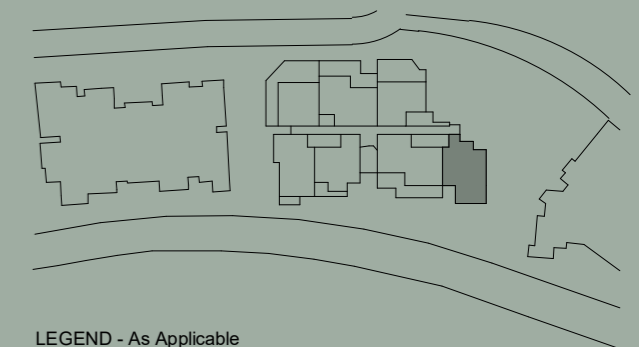
Apartment No. 113 Building GRANDIS Lot No. 09

Colour Scheme  
AUTUMN

### 2 BEDROOM + MEDIA APARTMENT

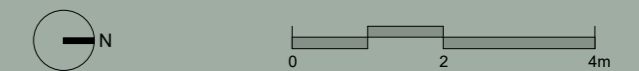
Internal Area 98 m<sup>2</sup>  
Balcony Area 24 m<sup>2</sup>  
Total Area 122 m<sup>2</sup>

Areas subject to change in accordance with the provisions of the contract. Area includes balcony and/or terrace where applicable. It excludes associated parking and external storage areas.

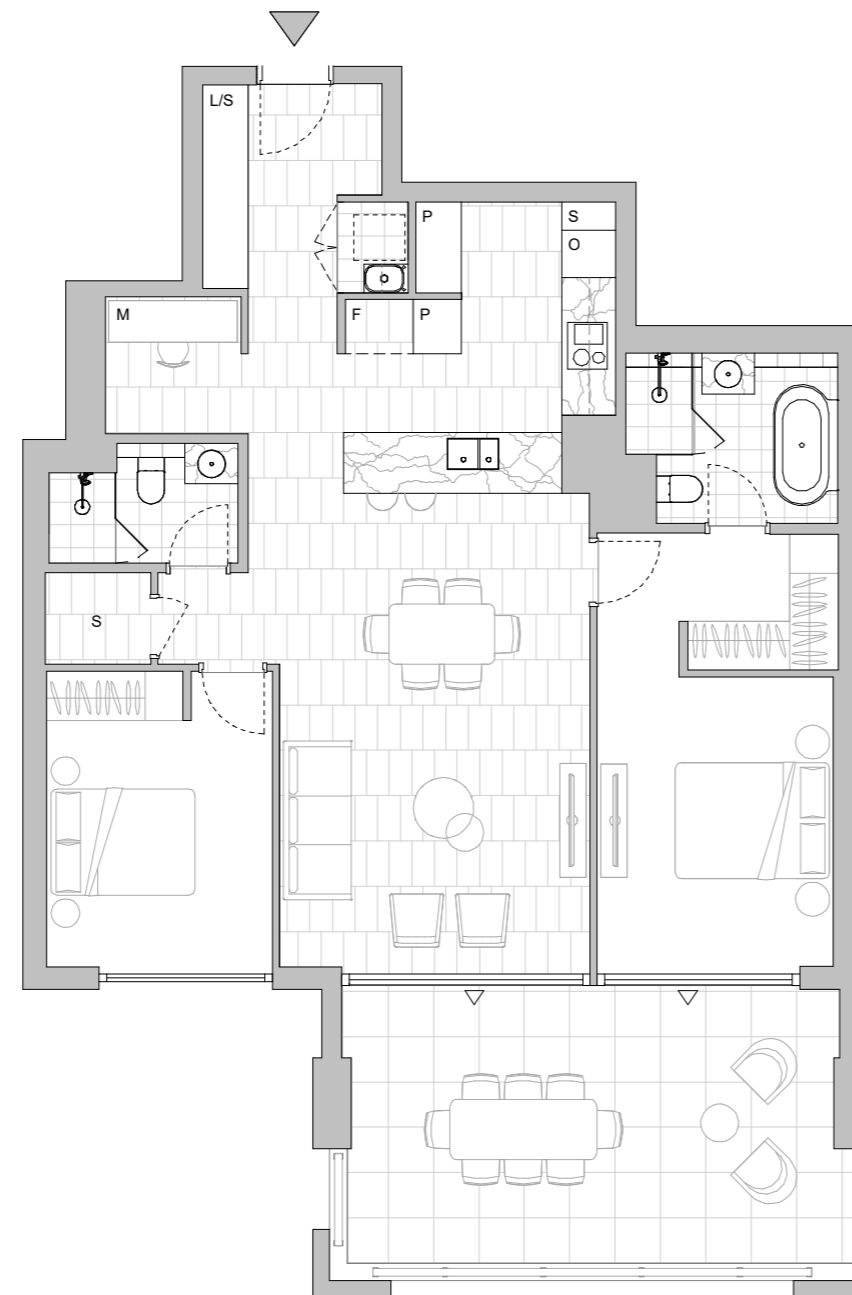


#### LEGEND - As Applicable

|                |                      |                    |
|----------------|----------------------|--------------------|
| ▲ Access       | △ Balcony Access     | ** Vertical Screen |
| F Fridge Space | IF Integrated Fridge | SL Skylight        |
| P Pantry       | S Storage            | SY Study           |
| O Oven Stack   | L Linen              |                    |
| M Media        | K King Bed           |                    |



This floor plan was produced prior to construction and while the information contained herein is believed to be correct it is not guaranteed. Changes will undoubtedly be made in accordance with the contract for sale. The plan does not show additional features such as hot water systems, services or bulkheads necessary for services. Dimensions, areas and scale of floor plans are approximate only. Dimensions are measured, and areas are calculated, in accordance with the Australian Property Institute Method of Measurement effective at the date of preparation of the Floor Plan. The furniture and furnishings depicted are not included with any sale. Purchasers must refer to the contract for sale for the list of inclusions. Furnishings should not be taken to indicate the final position of power points, TV connection points and the like. Bed sizes shown are indicative only and not guaranteed. All graphics, including design and extent of tile/paver/carpet areas, landscaping, balustrades, louvres, sun shading, fencing, privacy screens, services equipment and wintergardens are for illustrative purposes only and are not to be relied on as a representative of the final product. All level changes in the courtyards may not be shown.



LEVEL 1

# HIGH FOREST

## APARTMENTS

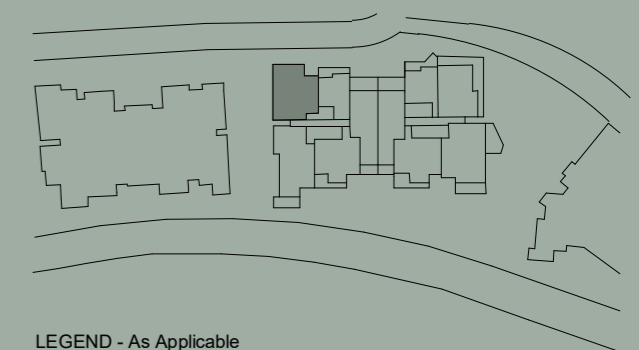
Apartment No. 212 Building GRANDIS Lot No. 13

Colour Scheme AUTUMN

### 2 BEDROOM APARTMENT

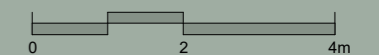
Internal Area 90 m<sup>2</sup>  
Balcony Area 12 m<sup>2</sup>  
Total Area 102 m<sup>2</sup>

Areas subject to change in accordance with the provisions of the contract. Area includes balcony and/or terrace where applicable. It excludes associated parking and external storage areas.

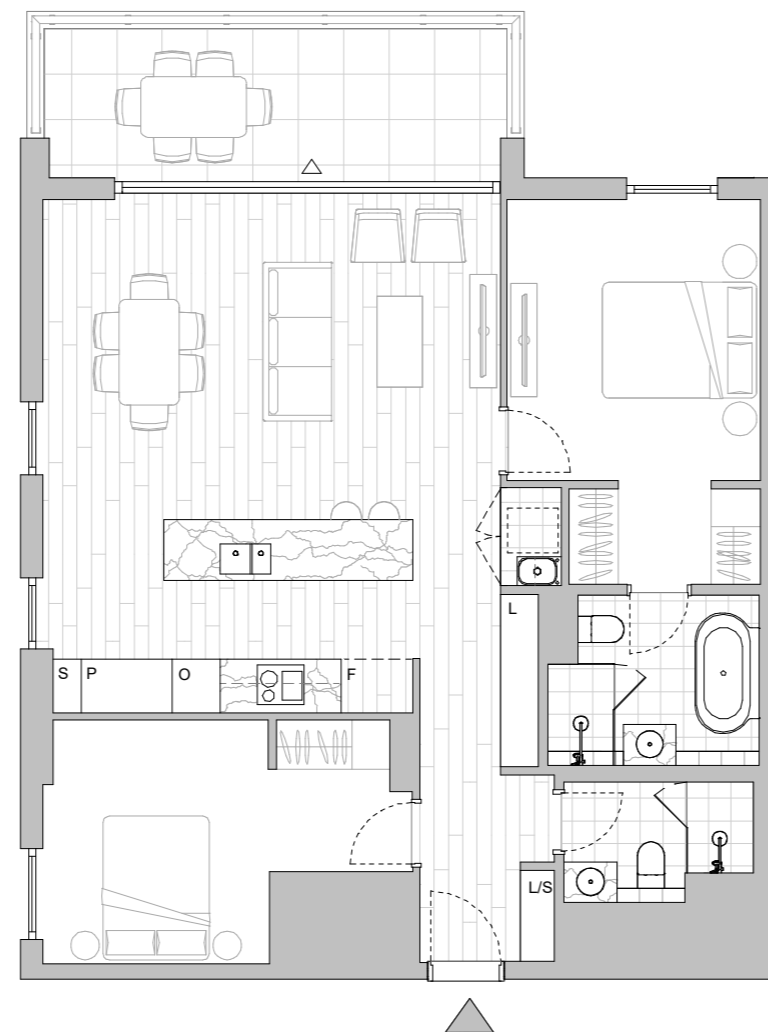


#### LEGEND - As Applicable

- |                |                      |                    |
|----------------|----------------------|--------------------|
| ▲ Access       | △ Balcony Access     | ** Vertical Screen |
| F Fridge Space | IF Integrated Fridge | SL Skylight        |
| P Pantry       | S Storage            | SY Study           |
| O Oven Stack   | L Linen              |                    |
| M Media        | K King Bed           |                    |



This floor plan was produced prior to construction and while the information contained herein is believed to be correct it is not guaranteed. Changes will undoubtedly be made in accordance with the contract for sale. The plan does not show additional features such as hot water systems, services or bulkheads necessary for services. Dimensions, areas and scale of floor plans are approximate only. Dimensions are measured, and areas are calculated, in accordance with the Australian Property Institute Method of Measurement effective at the date of preparation of the Floor Plan. The furniture and furnishings depicted are not included with any sale. Purchasers must refer to the contract for sale for the list of inclusions. Furnishings should not be taken to indicate the final position of power points, TV connection points and the like. Bed sizes shown are indicative only and not guaranteed. All graphics, including design and extent of tile/paver/carpet areas, landscaping, balustrades, louvres, sun shading, fencing, privacy screens, services equipment and wintergardens are for illustrative purposes only and are not to be relied on as a representative of the final product. All level changes in the courtyards may not be shown.



LEVEL 2

# HIGHFOREST

## APARTMENTS

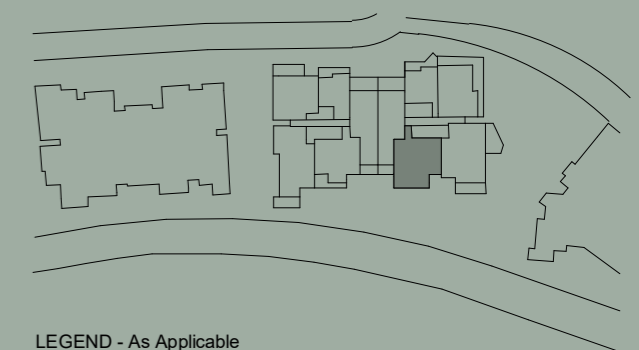
Apartment No. 216 Building GRANDIS Lot No. 17

Colour Scheme  
AUTUMN

### 2 BEDROOM APARTMENT

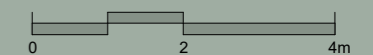
Internal Area 98 m<sup>2</sup>  
Balcony Area 13 m<sup>2</sup>  
Total Area 111 m<sup>2</sup>

Areas subject to change in accordance with the provisions of the contract. Area includes balcony and/or terrace where applicable. It excludes associated parking and external storage areas.

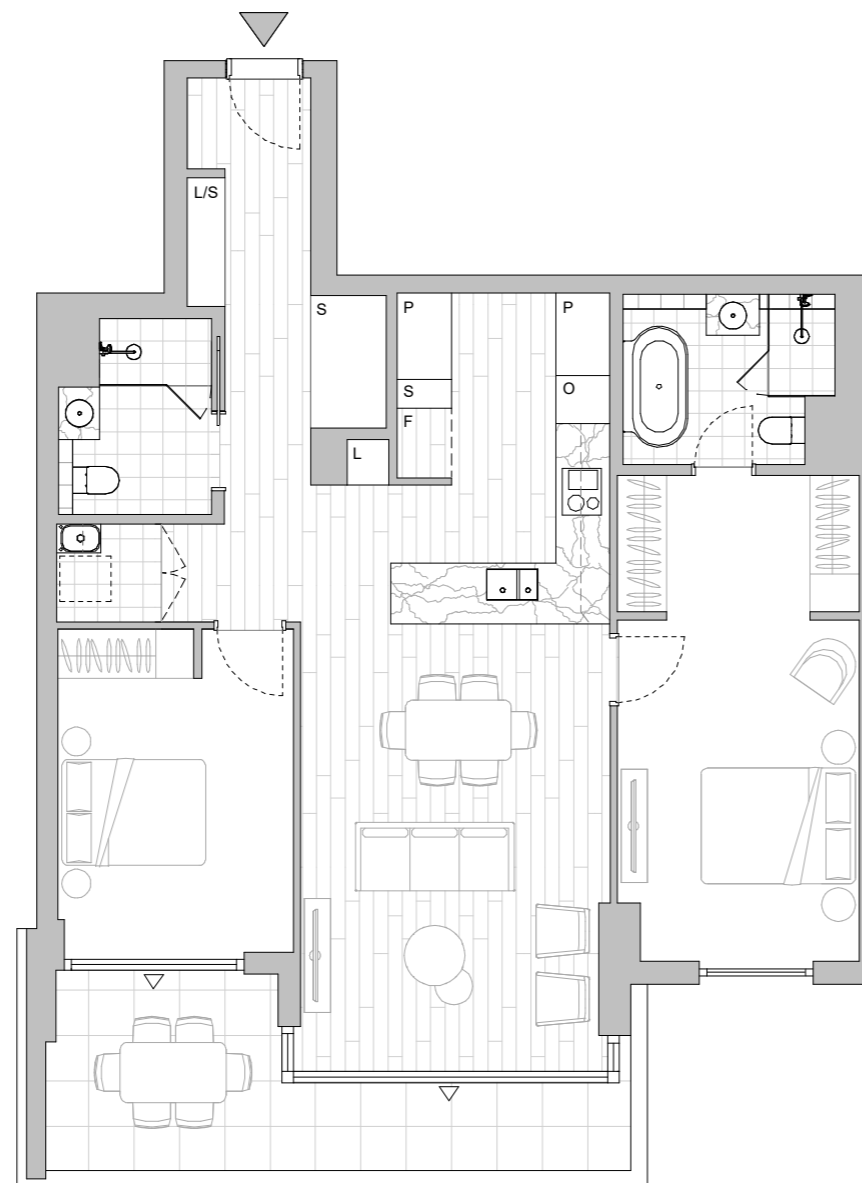


#### LEGEND - As Applicable

|                |                      |                    |
|----------------|----------------------|--------------------|
| Access         | Balcony Access       | ** Vertical Screen |
| F Fridge Space | IF Integrated Fridge | SL Skylight        |
| P Pantry       | S Storage            | SY Study           |
| O Oven Stack   | L Linen              |                    |
| M Media        | K King Bed           |                    |



This floor plan was produced prior to construction and while the information contained herein is believed to be correct it is not guaranteed. Changes will undoubtedly be made in accordance with the contract for sale. The plan does not show additional features such as hot water systems, services or bulkheads necessary for services. Dimensions, areas and scale of floor plans are approximate only. Dimensions are measured, and areas are calculated, in accordance with the Australian Property Institute Method of Measurement effective at the date of preparation of the Floor Plan. The furniture and furnishings depicted are not included with any sale. Purchasers must refer to the contract for sale for the list of inclusions. Furnishings should not be taken to indicate the final position of power points, TV connection points and the like. Bed sizes shown are indicative only and not guaranteed. All graphics, including design and extent of tile/paver/carpet areas, landscaping, balustrades, louvres, sun shading, fencing, privacy screens, services equipment and wintergardens are for illustrative purposes only and are not to be relied on as a representative of the final product. All level changes in the courtyards may not be shown.



LEVEL 2

# HIGH FOREST

## APARTMENTS

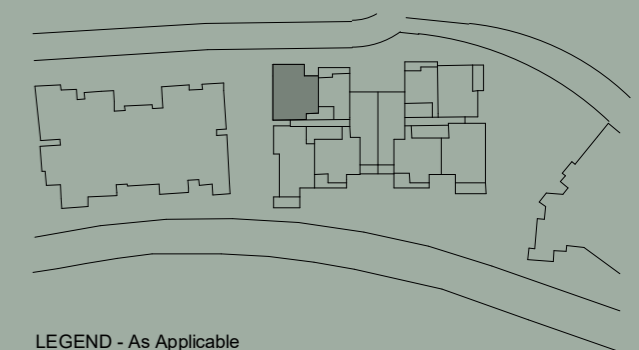
Apartment No. 312 Building GRANDIS Lot No. 23

Colour Scheme  
SUMMER

### 2 BEDROOM APARTMENT

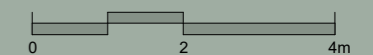
Internal Area 90 m<sup>2</sup>  
Balcony Area 12 m<sup>2</sup>  
Total Area 102 m<sup>2</sup>

Areas subject to change in accordance with the provisions of the contract. Area includes balcony and/or terrace where applicable. It excludes associated parking and external storage areas.

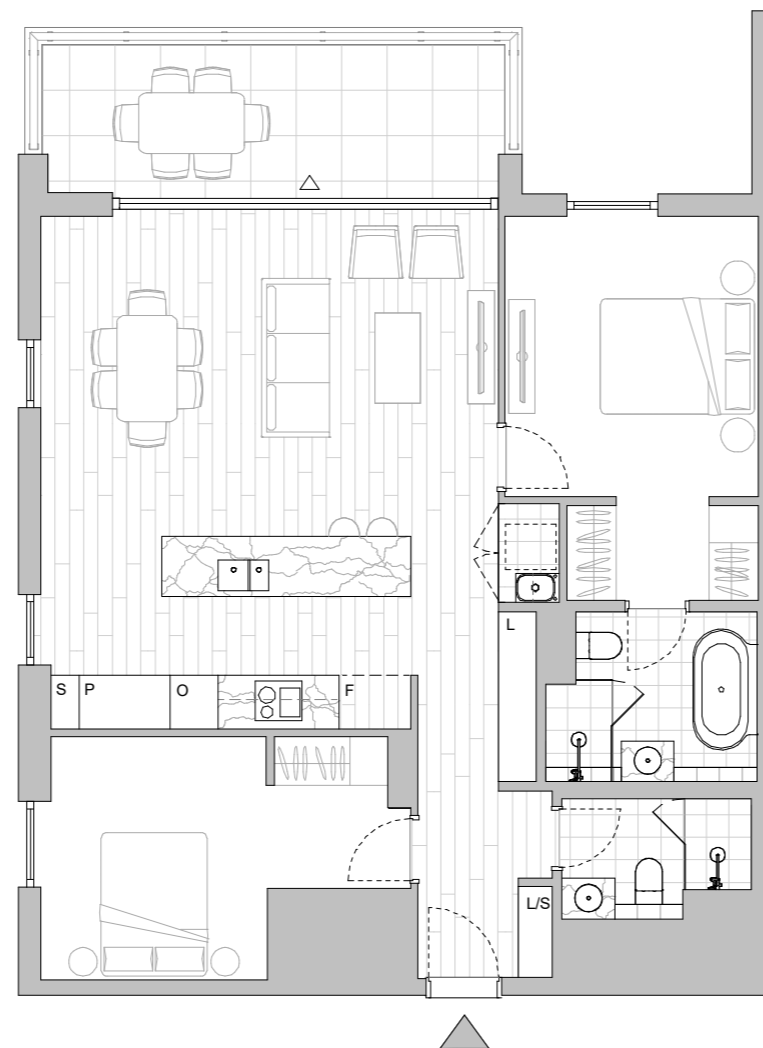


#### LEGEND - As Applicable

|                |                      |                    |
|----------------|----------------------|--------------------|
| ▲ Access       | △ Balcony Access     | ** Vertical Screen |
| F Fridge Space | IF Integrated Fridge | SL Skylight        |
| P Pantry       | S Storage            | SY Study           |
| O Oven Stack   | L Linen              |                    |
| M Media        | K King Bed           |                    |



This floor plan was produced prior to construction and while the information contained herein is believed to be correct it is not guaranteed. Changes will undoubtedly be made in accordance with the contract for sale. The plan does not show additional features such as hot water systems, services or bulkheads necessary for services. Dimensions, areas and scale of floor plans are approximate only. Dimensions are measured, and areas are calculated, in accordance with the Australian Property Institute Method of Measurement effective at the date of preparation of the Floor Plan. The furniture and furnishings depicted are not included with any sale. Purchasers must refer to the contract for sale for the list of inclusions. Furnishings should not be taken to indicate the final position of power points, TV connection points and the like. Bed sizes shown are indicative only and not guaranteed. All graphics, including design and extent of tile/paver/carpet areas, landscaping, balustrades, louvres, sun shading, fencing, privacy screens, services equipment and wintergardens are for illustrative purposes only and are not to be relied on as a representative of the final product. All level changes in the courtyards may not be shown.



LEVEL 3

# HIGHFOREST

## APARTMENTS

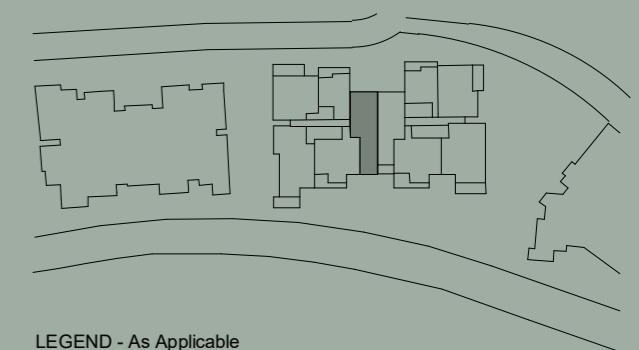
Apartment No. 314 Building GRANDIS Lot No. 25

Colour Scheme  
SUMMER

### 2 BEDROOM APARTMENT

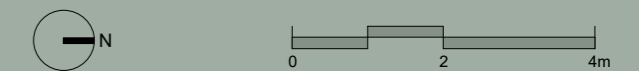
Internal Area 92 m<sup>2</sup>  
Balcony Area 10 m<sup>2</sup>  
Total Area 102 m<sup>2</sup>

Areas subject to change in accordance with the provisions of the contract. Area includes balcony and/or terrace where applicable. It excludes associated parking and external storage areas.

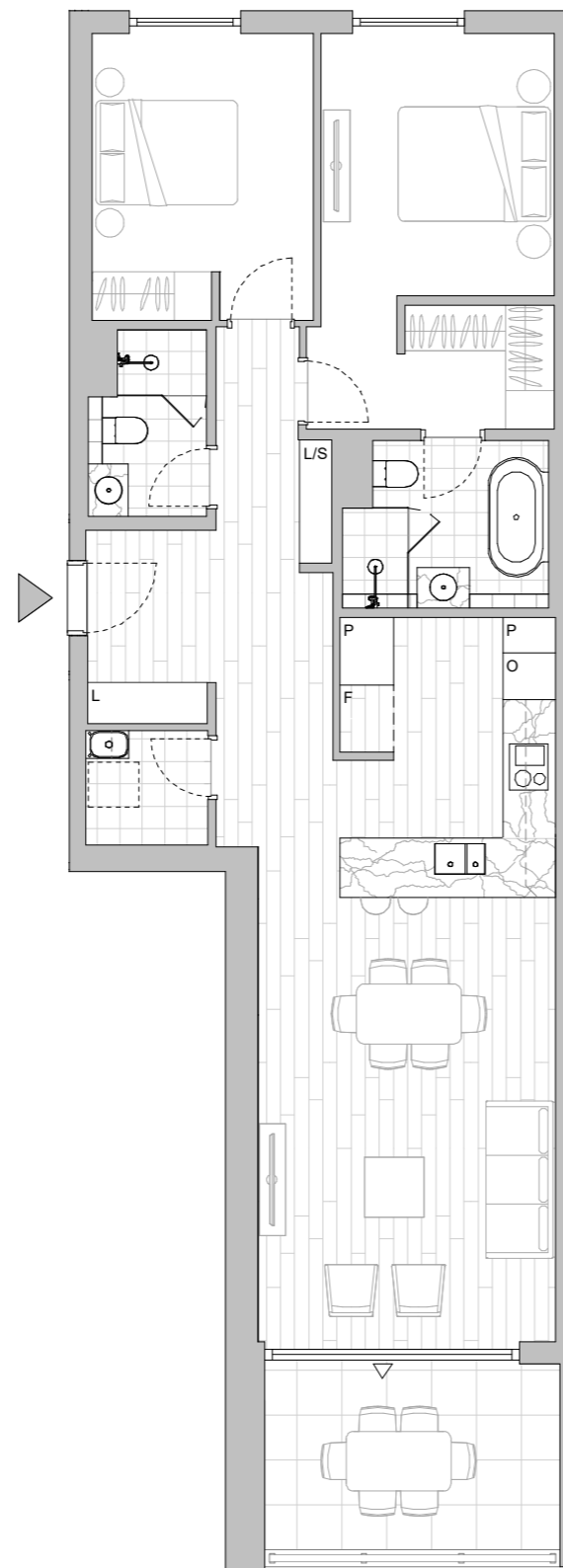


#### LEGEND - As Applicable

|                |                      |                    |
|----------------|----------------------|--------------------|
| Access         | Balcony Access       | ** Vertical Screen |
| F Fridge Space | IF Integrated Fridge | SL Skylight        |
| P Pantry       | S Storage            | SY Study           |
| O Oven Stack   | L Linen              |                    |
| M Media        | K King Bed           |                    |



This floor plan was produced prior to construction and while the information contained herein is believed to be correct it is not guaranteed. Changes will undoubtedly be made in accordance with the contract for sale. The plan does not show additional features such as hot water systems, services or bulkheads necessary for services. Dimensions, areas and scale of floor plans are approximate only. Dimensions are measured, and areas are calculated, in accordance with the Australian Property Institute Method of Measurement effective at the date of preparation of the Floor Plan. The furniture and furnishings depicted are not included with any sale. Purchasers must refer to the contract for sale for the list of inclusions. Furnishings should not be taken to indicate the final position of power points, TV connection points and the like. Bed sizes shown are indicative only and not guaranteed. All graphics, including design and extent of tile/paver/carpet areas, landscaping, balustrades, louvres, sun shading, fencing, privacy screens, services equipment and wintergardens are for illustrative purposes only and are not to be relied on as a representative of the final product. All level changes in the courtyards may not be shown.



LEVEL 3

# HIGHFOREST

## APARTMENTS

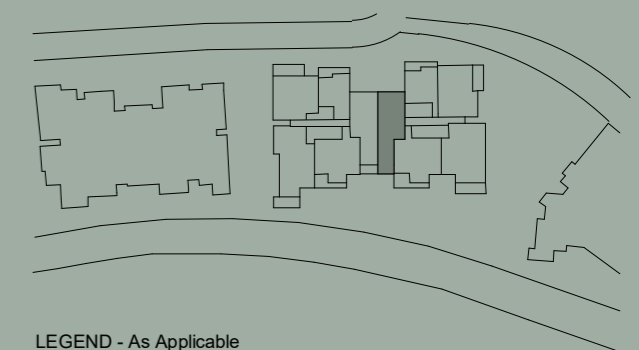
Apartment No. 317 Building GRANDIS Lot No. 28

Colour Scheme  
AUTUMN

### 2 BEDROOM APARTMENT

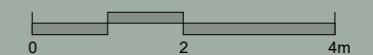
Internal Area 92 m<sup>2</sup>  
Balcony Area 10 m<sup>2</sup>  
Total Area 102 m<sup>2</sup>

Areas subject to change in accordance with the provisions of the contract. Area includes balcony and/or terrace where applicable. It excludes associated parking and external storage areas.

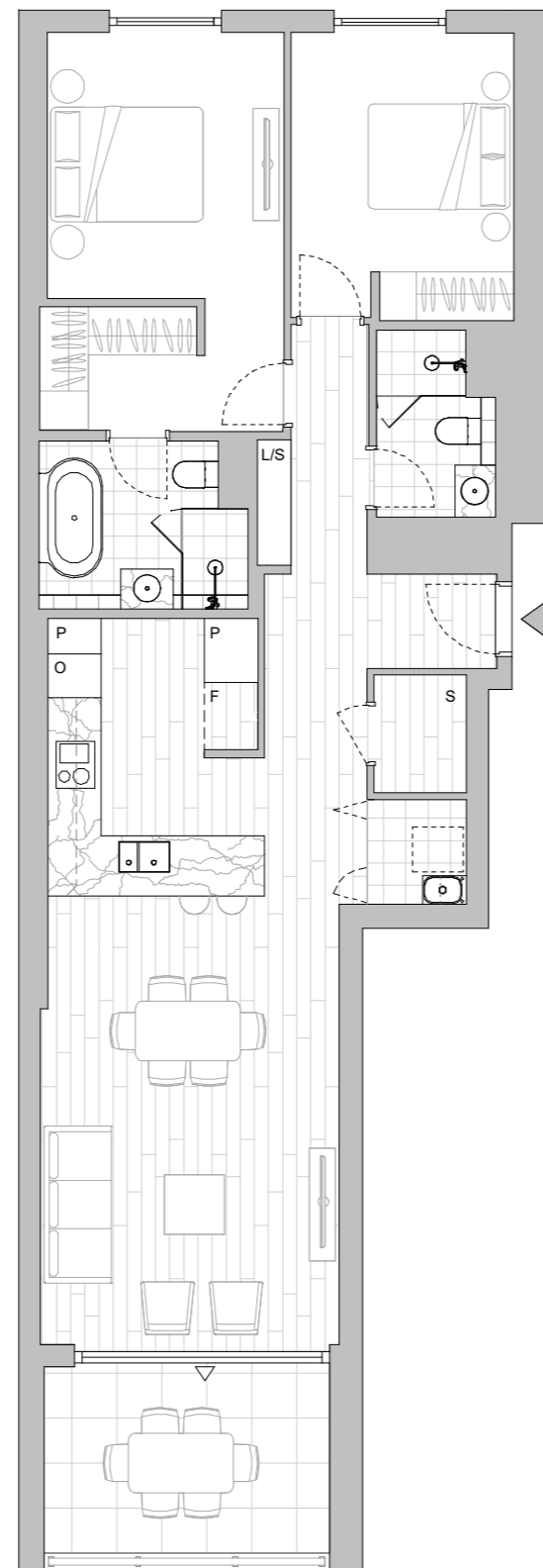


#### LEGEND - As Applicable

|                |                      |                    |
|----------------|----------------------|--------------------|
| Access         | Balcony Access       | ** Vertical Screen |
| F Fridge Space | IF Integrated Fridge | SL Skylight        |
| P Pantry       | S Storage            | SY Study           |
| O Oven Stack   | L Linen              |                    |
| M Media        | K King Bed           |                    |



This floor plan was produced prior to construction and while the information contained herein is believed to be correct it is not guaranteed. Changes will undoubtedly be made in accordance with the contract for sale. The plan does not show additional features such as hot water systems, services or bulkheads necessary for services. Dimensions, areas and scale of floor plans are approximate only. Dimensions are measured, and areas are calculated, in accordance with the Australian Property Institute Method of Measurement effective at the date of preparation of the Floor Plan. The furniture and furnishings depicted are not included with any sale. Purchasers must refer to the contract for sale for the list of inclusions. Furnishings should not be taken to indicate the final position of power points, TV connection points and the like. Bed sizes shown are indicative only and not guaranteed. All graphics, including design and extent of tile/paver/carpet areas, landscaping, balustrades, louvres, sun shading, fencing, privacy screens, services equipment and wintergardens are for illustrative purposes only and are not to be relied on as a representative of the final product. All level changes in the courtyards may not be shown.



LEVEL 3

# HIGH FOREST

## APARTMENTS

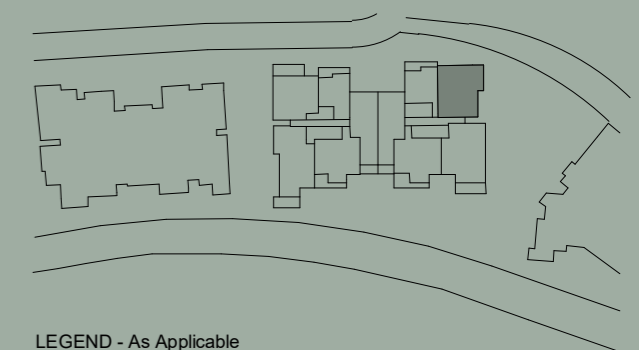
Apartment No. 319 Building GRANDIS Lot No. 30

Colour Scheme  
SUMMER

### 2 BEDROOM APARTMENT

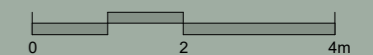
Internal Area 90 m<sup>2</sup>  
Balcony Area 12 m<sup>2</sup>  
Total Area 102 m<sup>2</sup>

Areas subject to change in accordance with the provisions of the contract. Area includes balcony and/or terrace where applicable. It excludes associated parking and external storage areas.

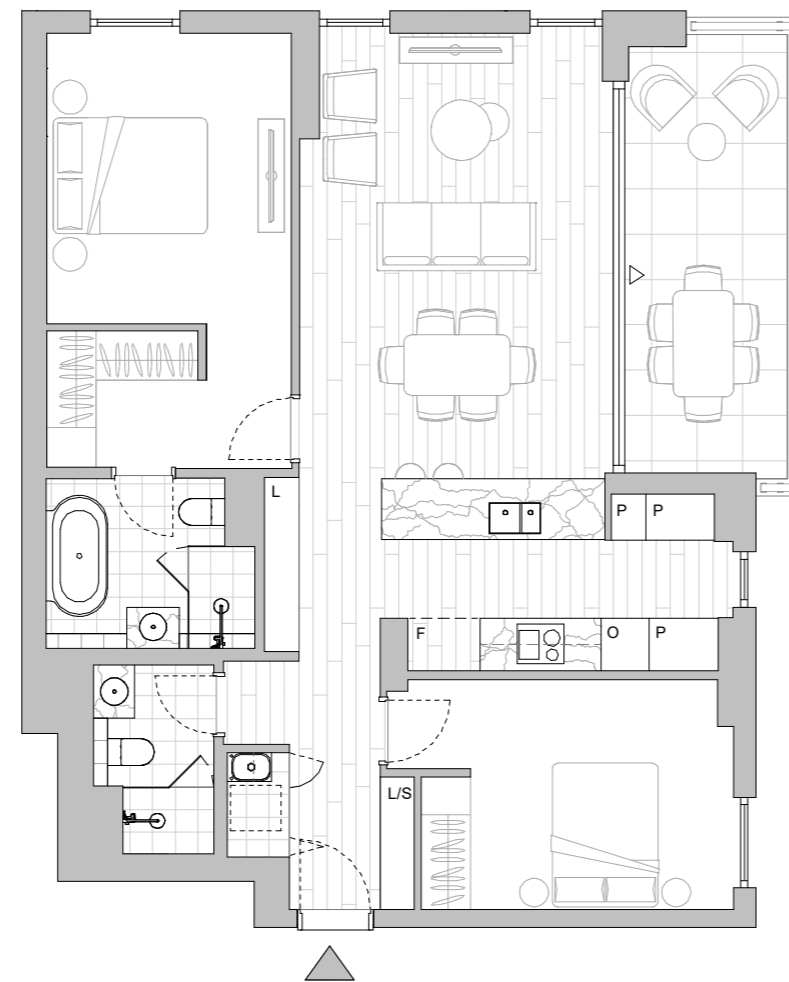


#### LEGEND - As Applicable

- |                |                      |                    |
|----------------|----------------------|--------------------|
| ▲ Access       | △ Balcony Access     | ** Vertical Screen |
| F Fridge Space | IF Integrated Fridge | SL Skylight        |
| P Pantry       | S Storage            | SY Study           |
| O Oven Stack   | L Linen              |                    |
| M Media        | K King Bed           |                    |



This floor plan was produced prior to construction and while the information contained herein is believed to be correct it is not guaranteed. Changes will undoubtedly be made in accordance with the contract for sale. The plan does not show additional features such as hot water systems, services or bulkheads necessary for services. Dimensions, areas and scale of floor plans are approximate only. Dimensions are measured, and areas are calculated, in accordance with the Australian Property Institute Method of Measurement effective at the date of preparation of the Floor Plan. The furniture and furnishings depicted are not included with any sale. Purchasers must refer to the contract for sale for the list of inclusions. Furnishings should not be taken to indicate the final position of power points, TV connection points and the like. Bed sizes shown are indicative only and not guaranteed. All graphics, including design and extent of tile/paver/carpet areas, landscaping, balustrades, louvres, sun shading, fencing, privacy screens, services equipment and wintergardens are for illustrative purposes only and are not to be relied on as a representative of the final product. All level changes in the courtyards may not be shown.



LEVEL 3

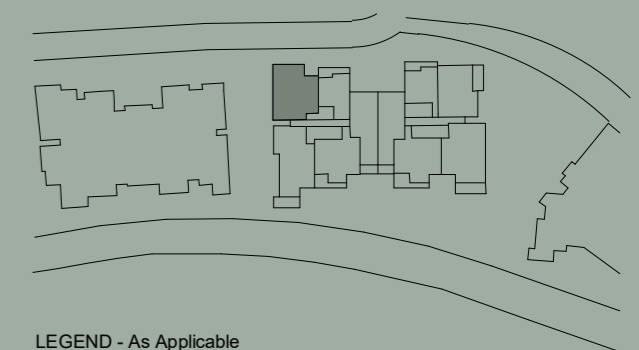
Apartment No. 412    Building GRANDIS    Lot No. 33

Colour Scheme  
AUTUMN

### 2 BEDROOM APARTMENT

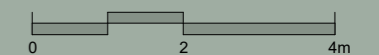
Internal Area 90 m<sup>2</sup>  
Balcony Area 12 m<sup>2</sup>  
Total Area 102 m<sup>2</sup>

Areas subject to change in accordance with the provisions of the contract. Area includes balcony and/or terrace where applicable. It excludes associated parking and external storage areas.

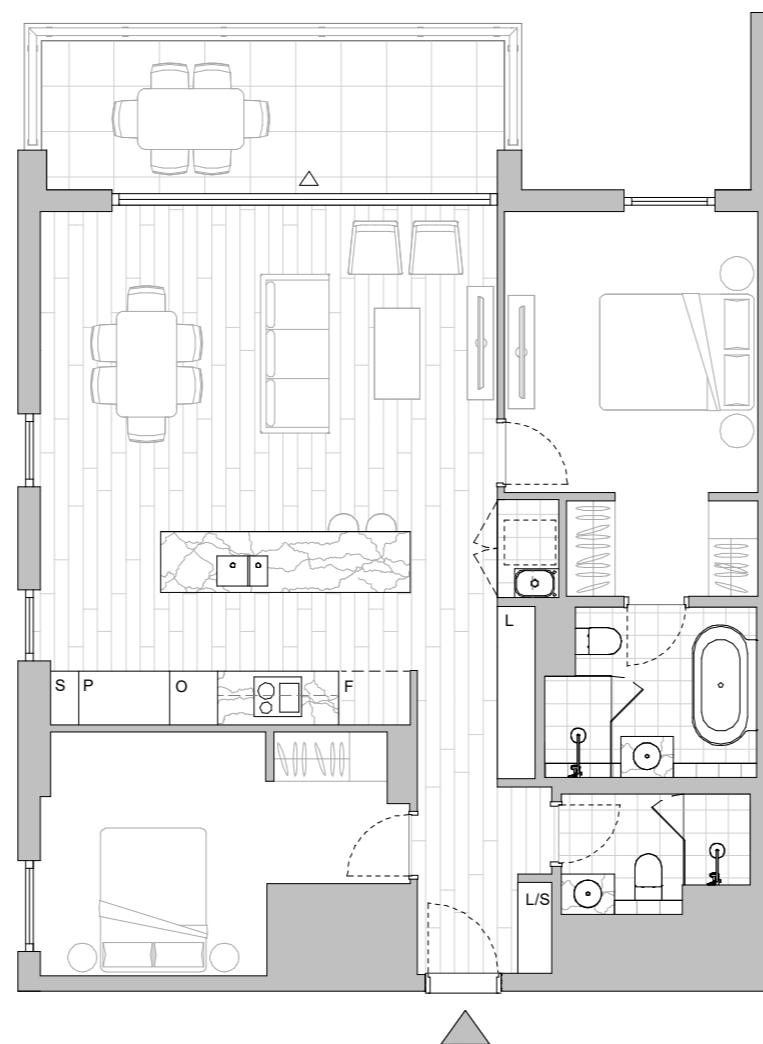


#### LEGEND - As Applicable

- |                |                      |                    |
|----------------|----------------------|--------------------|
| ▲ Access       | △ Balcony Access     | ** Vertical Screen |
| F Fridge Space | IF Integrated Fridge | SL Skylight        |
| P Pantry       | S Storage            | SY Study           |
| O Oven Stack   | L Linen              |                    |
| M Media        | K King Bed           |                    |



This floor plan was produced prior to construction and while the information contained herein is believed to be correct it is not guaranteed. Changes will undoubtedly be made in accordance with the contract for sale. The plan does not show additional features such as hot water systems, services or bulkheads necessary for services. Dimensions, areas and scale of floor plans are approximate only. Dimensions are measured, and areas are calculated, in accordance with the Australian Property Institute Method of Measurement effective at the date of preparation of the Floor Plan. The furniture and furnishings depicted are not included with any sale. Purchasers must refer to the contract for sale for the list of inclusions. Furnishings should not be taken to indicate the final position of power points, TV connection points and the like. Bed sizes shown are indicative only and not guaranteed. All graphics, including design and extent of tile/paver/carpet areas, landscaping, balustrades, louvres, sun shading, fencing, privacy screens, services equipment and wintergardens are for illustrative purposes only and are not to be relied on as a representative of the final product. All level changes in the courtyards may not be shown.



LEVEL 4

# HIGHFOREST

## APARTMENTS

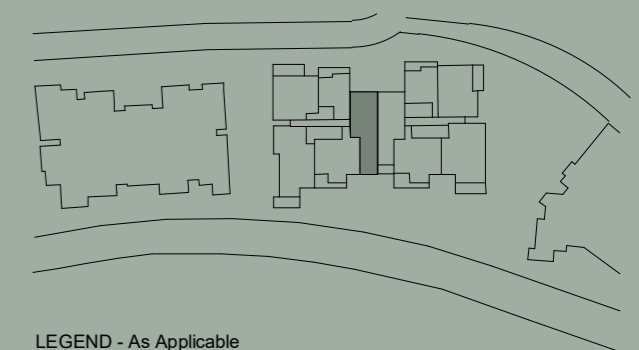
Apartment No. 414 Building GRANDIS Lot No. 35

Colour Scheme  
AUTUMN

### 2 BEDROOM APARTMENT

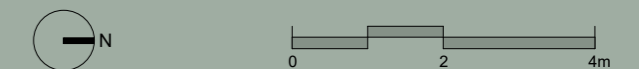
Internal Area 92 m<sup>2</sup>  
Balcony Area 10 m<sup>2</sup>  
Total Area 102 m<sup>2</sup>

Areas subject to change in accordance with the provisions of the contract. Area includes balcony and/or terrace where applicable. It excludes associated parking and external storage areas.

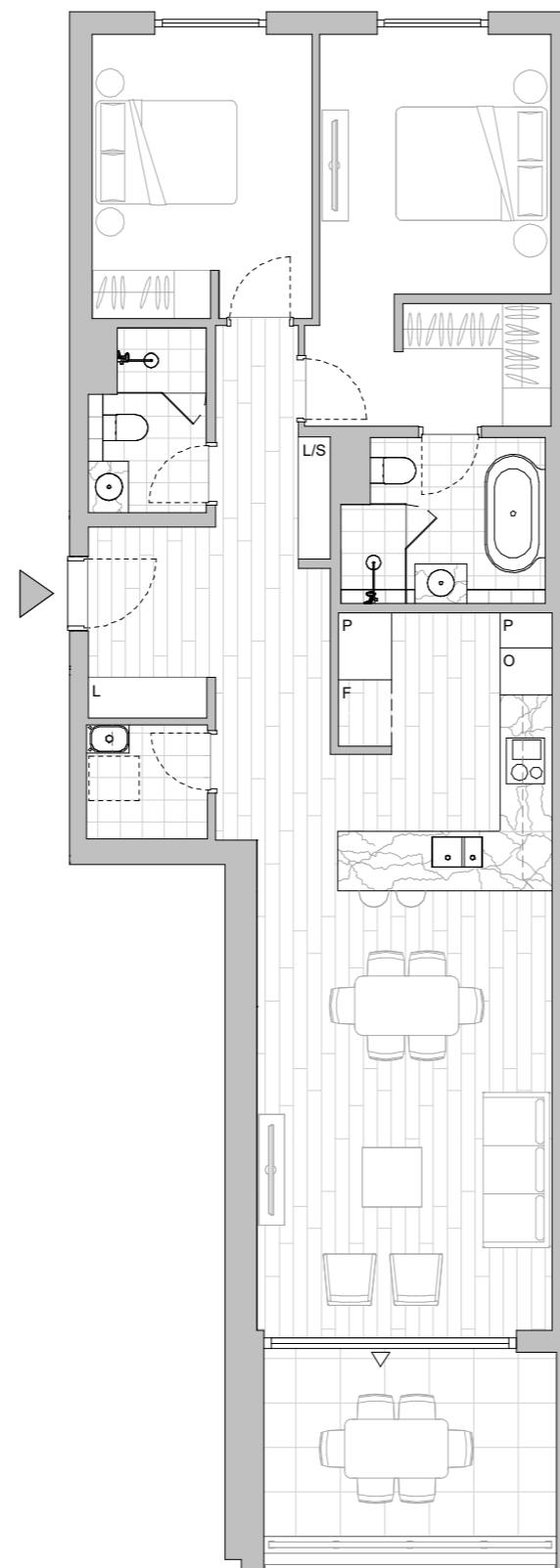


#### LEGEND - As Applicable

- |                |                      |                    |
|----------------|----------------------|--------------------|
| ▲ Access       | △ Balcony Access     | ** Vertical Screen |
| F Fridge Space | IF Integrated Fridge | SL Skylight        |
| P Pantry       | S Storage            | SY Study           |
| O Oven Stack   | L Linen              |                    |
| M Media        | K King Bed           |                    |



This floor plan was produced prior to construction and while the information contained herein is believed to be correct it is not guaranteed. Changes will undoubtedly be made in accordance with the contract for sale. The plan does not show additional features such as hot water systems, services or bulkheads necessary for services. Dimensions, areas and scale of floor plans are approximate only. Dimensions are measured, and areas are calculated, in accordance with the Australian Property Institute Method of Measurement effective at the date of preparation of the Floor Plan. The furniture and furnishings depicted are not included with any sale. Purchasers must refer to the contract for sale for the list of inclusions. Furnishings should not be taken to indicate the final position of power points, TV connection points and the like. Bed sizes shown are indicative only and not guaranteed. All graphics, including design and extent of tile/paver/carpet areas, landscaping, balustrades, louvres, sun shading, fencing, privacy screens, services equipment and wintergardens are for illustrative purposes only and are not to be relied on as a representative of the final product. All level changes in the courtyards may not be shown.



LEVEL 4

# HIGHFOREST

## APARTMENTS

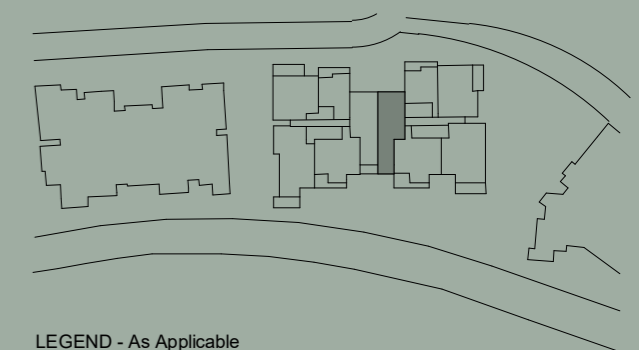
Apartment No. 417 Building GRANDIS Lot No. 38

Colour Scheme  
SUMMER

### 2 BEDROOM APARTMENT

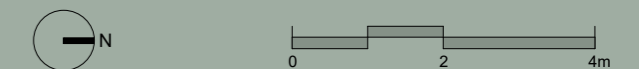
Internal Area 92 m<sup>2</sup>  
Balcony Area 10 m<sup>2</sup>  
Total Area 102 m<sup>2</sup>

Areas subject to change in accordance with the provisions of the contract. Area includes balcony and/or terrace where applicable. It excludes associated parking and external storage areas.

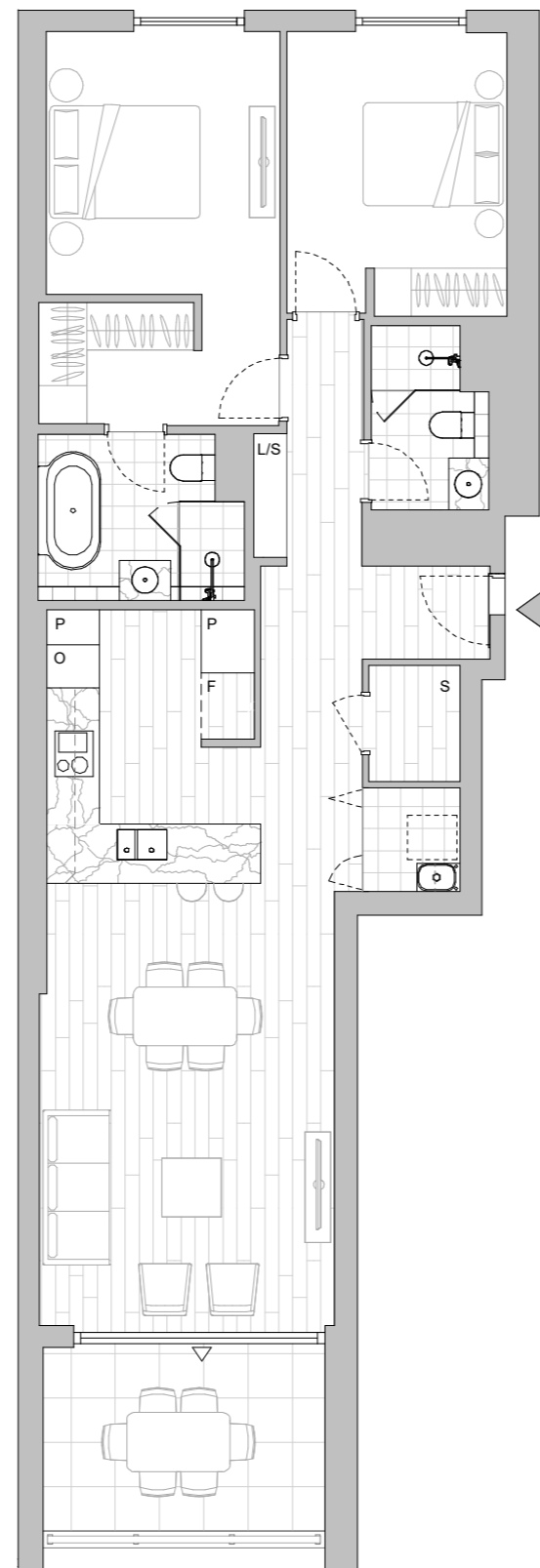


#### LEGEND - As Applicable

|                |                      |                    |
|----------------|----------------------|--------------------|
| Access         | Balcony Access       | ** Vertical Screen |
| F Fridge Space | IF Integrated Fridge | SL Skylight        |
| P Pantry       | S Storage            | SY Study           |
| O Oven Stack   | L Linen              |                    |
| M Media        | K King Bed           |                    |



This floor plan was produced prior to construction and while the information contained herein is believed to be correct it is not guaranteed. Changes will undoubtedly be made in accordance with the contract for sale. The plan does not show additional features such as hot water systems, services or bulkheads necessary for services. Dimensions, areas and scale of floor plans are approximate only. Dimensions are measured, and areas are calculated, in accordance with the Australian Property Institute Method of Measurement effective at the date of preparation of the Floor Plan. The furniture and furnishings depicted are not included with any sale. Purchasers must refer to the contract for sale for the list of inclusions. Furnishings should not be taken to indicate the final position of power points, TV connection points and the like. Bed sizes shown are indicative only and not guaranteed. All graphics, including design and extent of tile/paver/carpet areas, landscaping, balustrades, louvres, sun shading, fencing, privacy screens, services equipment and wintergardens are for illustrative purposes only and are not to be relied on as a representative of the final product. All level changes in the courtyards may not be shown.



LEVEL 4

# HIGHFOREST

## APARTMENTS

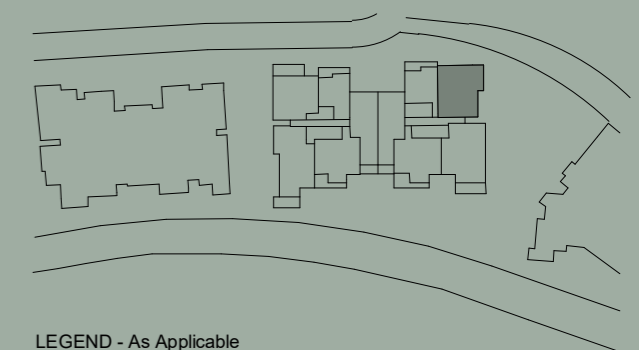
Apartment No. 419 Building GRANDIS Lot No. 40

Colour Scheme  
AUTUMN

### 2 BEDROOM APARTMENT

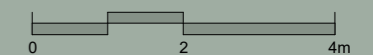
Internal Area 90 m<sup>2</sup>  
Balcony Area 12 m<sup>2</sup>  
Total Area 102 m<sup>2</sup>

Areas subject to change in accordance with the provisions of the contract. Area includes balcony and/or terrace where applicable. It excludes associated parking and external storage areas.

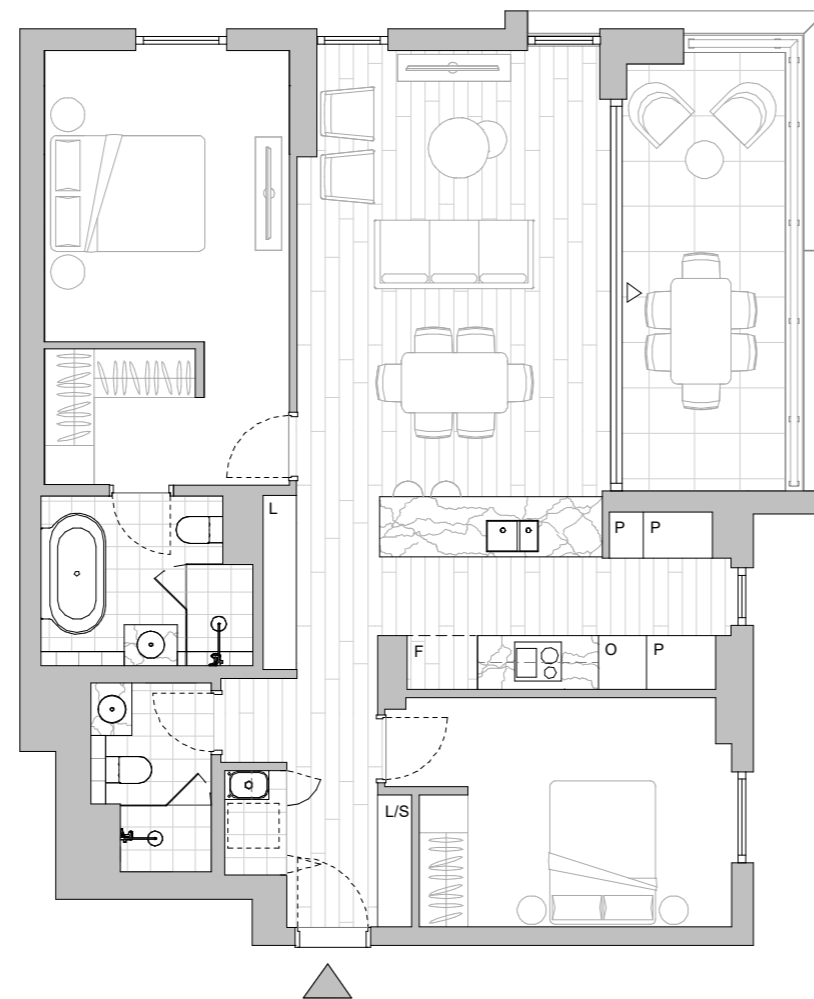


#### LEGEND - As Applicable

|                |                      |                    |
|----------------|----------------------|--------------------|
| ▲ Access       | △ Balcony Access     | ** Vertical Screen |
| F Fridge Space | IF Integrated Fridge | SL Skylight        |
| P Pantry       | S Storage            | SY Study           |
| O Oven Stack   | L Linen              |                    |
| M Media        | K King Bed           |                    |



This floor plan was produced prior to construction and while the information contained herein is believed to be correct it is not guaranteed. Changes will undoubtedly be made in accordance with the contract for sale. The plan does not show additional features such as hot water systems, services or bulkheads necessary for services. Dimensions, areas and scale of floor plans are approximate only. Dimensions are measured, and areas are calculated, in accordance with the Australian Property Institute Method of Measurement effective at the date of preparation of the Floor Plan. The furniture and furnishings depicted are not included with any sale. Purchasers must refer to the contract for sale for the list of inclusions. Furnishings should not be taken to indicate the final position of power points, TV connection points and the like. Bed sizes shown are indicative only and not guaranteed. All graphics, including design and extent of tile/paver/carpet areas, landscaping, balustrades, louvres, sun shading, fencing, privacy screens, services equipment and wintergardens are for illustrative purposes only and are not to be relied on as a representative of the final product. All level changes in the courtyards may not be shown.



LEVEL 4

# HIGHFOREST

## APARTMENTS

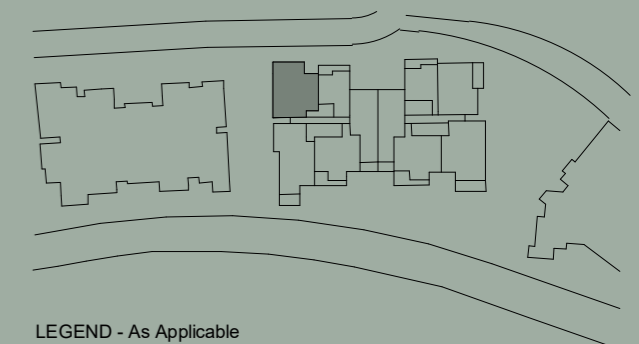
Apartment No. 512    Building GRANDIS    Lot No. 43

Colour Scheme  
SUMMER

### 2 BEDROOM APARTMENT

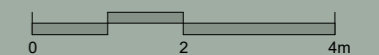
Internal Area 90 m<sup>2</sup>  
Balcony Area 12 m<sup>2</sup>  
Total Area 102 m<sup>2</sup>

Areas subject to change in accordance with the provisions of the contract. Area includes balcony and/or terrace where applicable. It excludes associated parking and external storage areas.

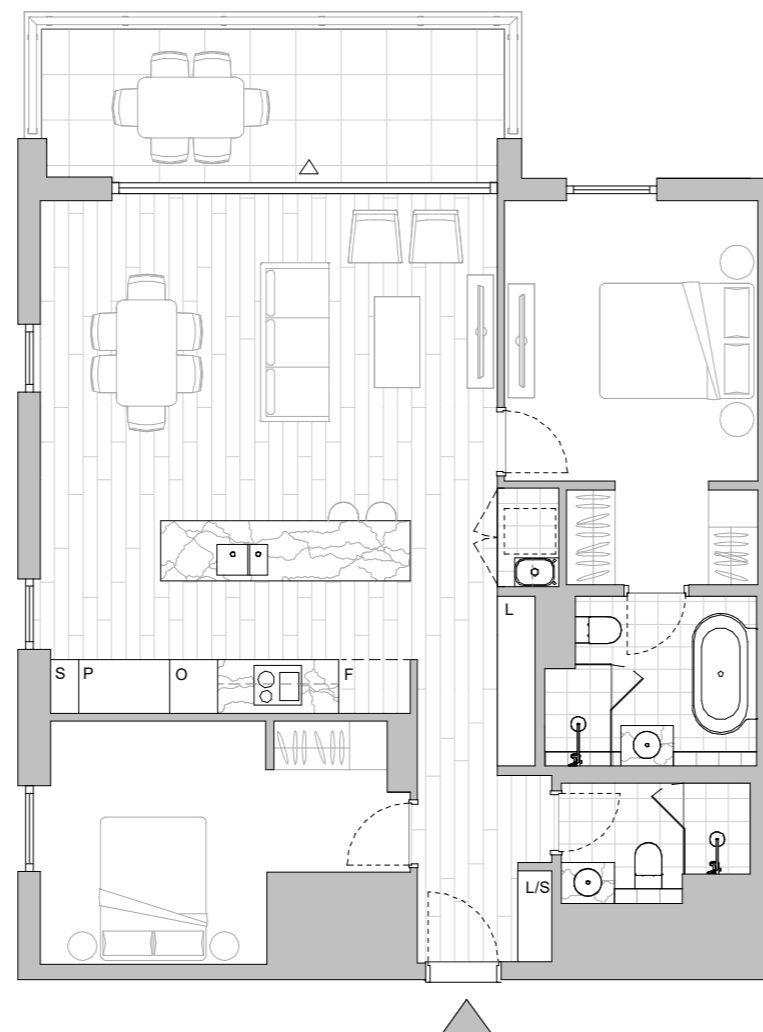


#### LEGEND - As Applicable

- |                |                      |                    |
|----------------|----------------------|--------------------|
| ▲ Access       | △ Balcony Access     | ** Vertical Screen |
| F Fridge Space | IF Integrated Fridge | SL Skylight        |
| P Pantry       | S Storage            | SY Study           |
| O Oven Stack   | L Linen              |                    |
| M Media        | K King Bed           |                    |



This floor plan was produced prior to construction and while the information contained herein is believed to be correct it is not guaranteed. Changes will undoubtedly be made in accordance with the contract for sale. The plan does not show additional features such as hot water systems, services or bulkheads necessary for services. Dimensions, areas and scale of floor plans are approximate only. Dimensions are measured, and areas are calculated, in accordance with the Australian Property Institute Method of Measurement effective at the date of preparation of the Floor Plan. The furniture and furnishings depicted are not included with any sale. Purchasers must refer to the contract for sale for the list of inclusions. Furnishings should not be taken to indicate the final position of power points, TV connection points and the like. Bed sizes shown are indicative only and not guaranteed. All graphics, including design and extent of tile/paver/carpet areas, landscaping, balustrades, louvres, sun shading, fencing, privacy screens, services equipment and wintergardens are for illustrative purposes only and are not to be relied on as a representative of the final product. All level changes in the courtyards may not be shown.



LEVEL 5