

# HIGHFOREST

## APARTMENTS

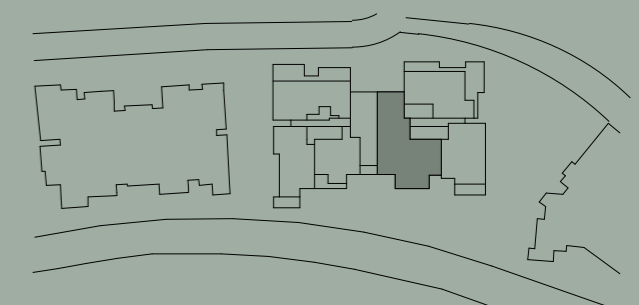
Apartment No. 611 Building GRANDIS Lot No. 56

Colour Scheme  
AUTUMN

### 4 BEDROOM + MEDIA APARTMENT

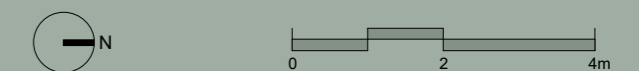
Internal Area 169 m<sup>2</sup>  
Balcony Area 48 m<sup>2</sup>  
Total Area 217 m<sup>2</sup>

Areas subject to change in accordance with the provisions of the contract. Area includes balcony and/or terrace where applicable. It excludes associated parking and external storage areas.

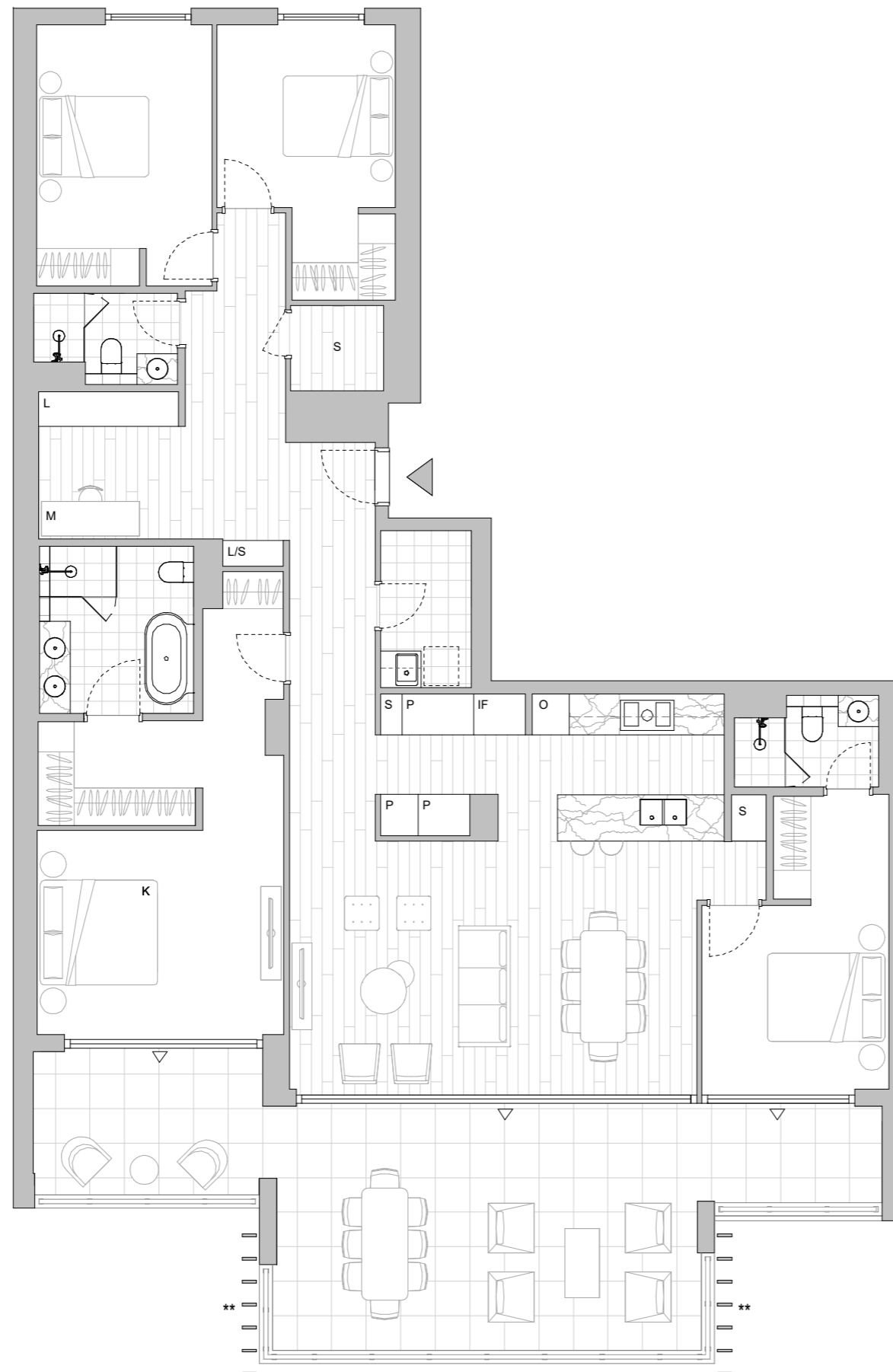


#### LEGEND - As Applicable

Access	Balcony Access	** Vertical Screen
F Fridge Space	IF Integrated Fridge	SL Skylight
P Pantry	S Storage	SY Study
O Oven Stack	L Linen	K King Bed
M Media		



This floor plan was produced prior to construction and while the information contained herein is believed to be correct it is not guaranteed. Changes will undoubtedly be made in accordance with the contract for sale. The plan does not show additional features such as hot water systems, services or bulkheads necessary for services. Dimensions, areas and scale of floor plans are approximate only. Dimensions are measured, and areas are calculated, in accordance with the Australian Property Institute Method of Measurement effective at the date of preparation of the Floor Plan. The furniture and furnishings depicted are not included with any sale. Purchasers must refer to the contract for sale for the list of inclusions. Furnishings should not be taken to indicate the final position of power points, TV connection points and the like. Bed sizes shown are indicative only and not guaranteed. All graphics, including design and extent of tile/paver/carpet areas, landscaping, balustrades, louvres, sun shading, fencing, privacy screens, services equipment and wintergardens are for illustrative purposes only and are not to be relied on as a representative of the final product. All level changes in the courtyards may not be shown.



LEVEL 6

# HIGHFOREST

## APARTMENTS

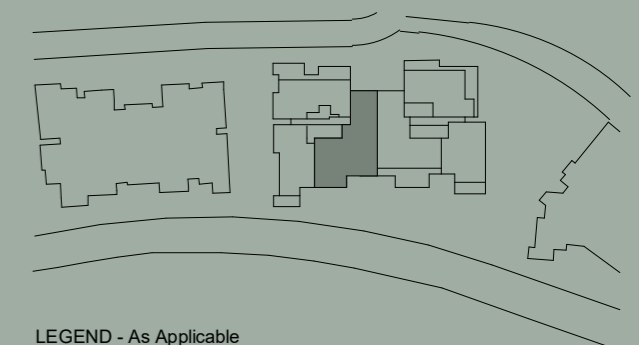
Apartment No. 709 Building GRANDIS Lot No. 61

Colour Scheme  
AUTUMN

### 4 BEDROOM + MEDIA APARTMENT

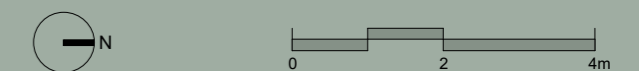
Internal Area 185 m<sup>2</sup>  
Balcony Area 33 m<sup>2</sup>  
Total Area 218 m<sup>2</sup>

Areas subject to change in accordance with the provisions of the contract. Area includes balcony and/or terrace where applicable. It excludes associated parking and external storage areas.

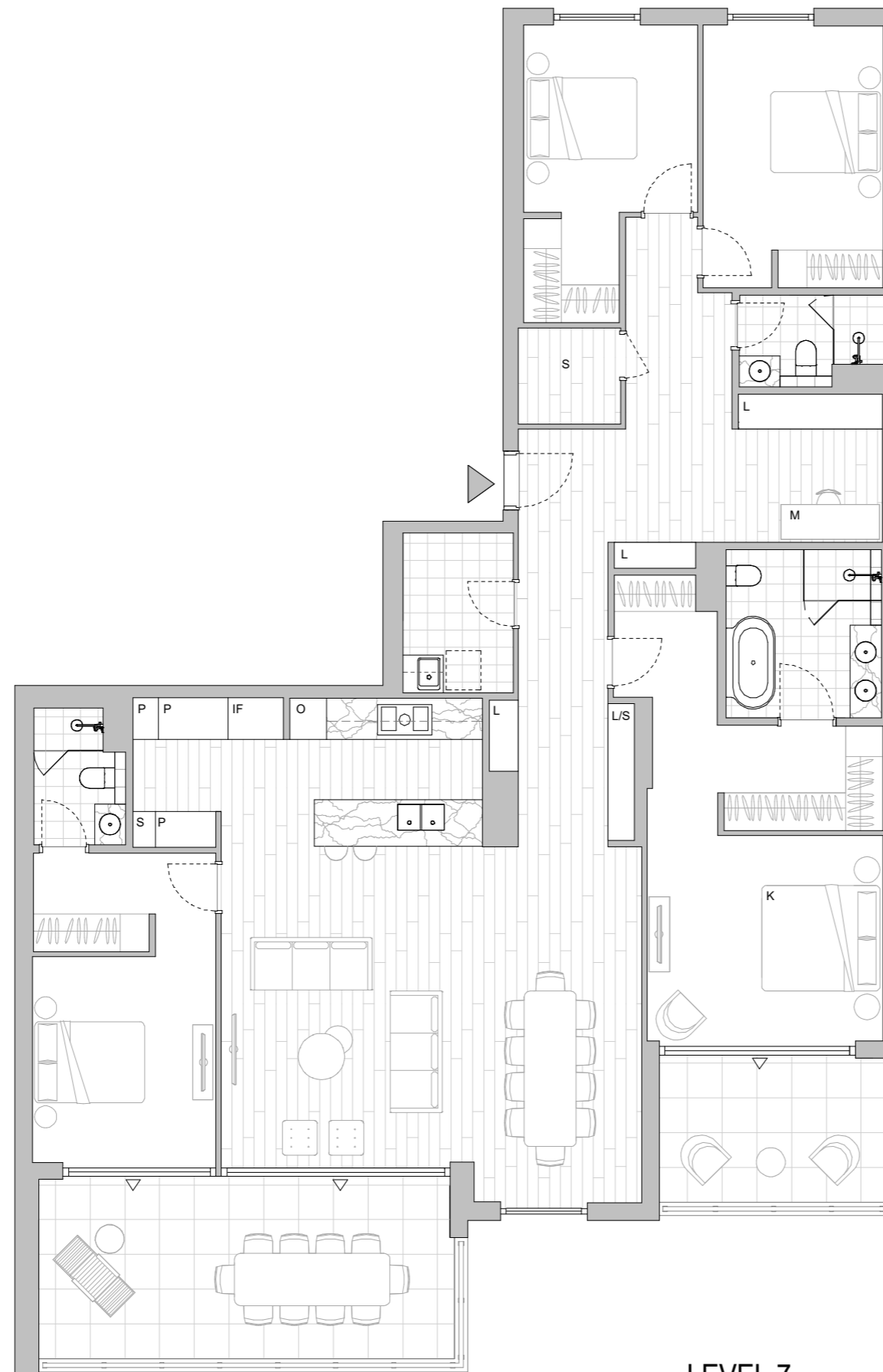


#### LEGEND - As Applicable

Access	Balcony Access	** Vertical Screen
F Fridge Space	IF Integrated Fridge	SL Skylight
P Pantry	S Storage	SY Study
O Oven Stack	L Linen	
M Media	K King Bed	



This floor plan was produced prior to construction and while the information contained herein is believed to be correct it is not guaranteed. Changes will undoubtedly be made in accordance with the contract for sale. The plan does not show additional features such as hot water systems, services or bulkheads necessary for services. Dimensions, areas and scale of floor plans are approximate only. Dimensions are measured, and areas are calculated, in accordance with the Australian Property Institute Method of Measurement effective at the date of preparation of the Floor Plan. The furniture and furnishings depicted are not included with any sale. Purchasers must refer to the contract for sale for the list of inclusions. Furnishings should not be taken to indicate the final position of power points, TV connection points and the like. Bed sizes shown are indicative only and not guaranteed. All graphics, including design and extent of tile/paver/carpet areas, landscaping, balustrades, louvres, sun shading, fencing, privacy screens, services equipment and wintergardens are for illustrative purposes only and are not to be relied on as a representative of the final product. All level changes in the courtyards may not be shown.



LEVEL 7