

# HIGH FOREST

## APARTMENTS

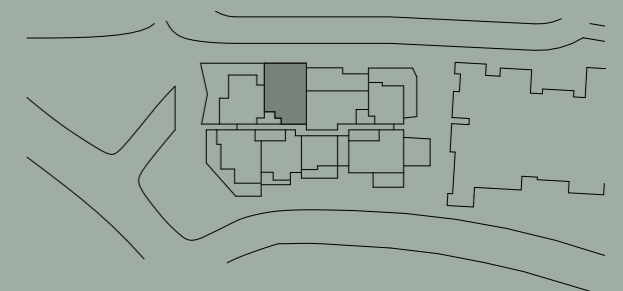
Apartment No. 103    Building IRONBARK    Lot No. 06

Colour Scheme  
SUMMER

### 2 BEDROOM + MEDIA APARTMENT

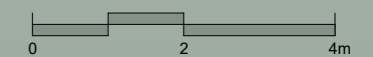
Internal Area 95 m<sup>2</sup>  
Balcony Area 51 m<sup>2</sup>  
Total Area 146 m<sup>2</sup>

Areas subject to change in accordance with the provisions of the contract. Area includes balcony and/or terrace where applicable. It excludes associated parking and external storage areas.

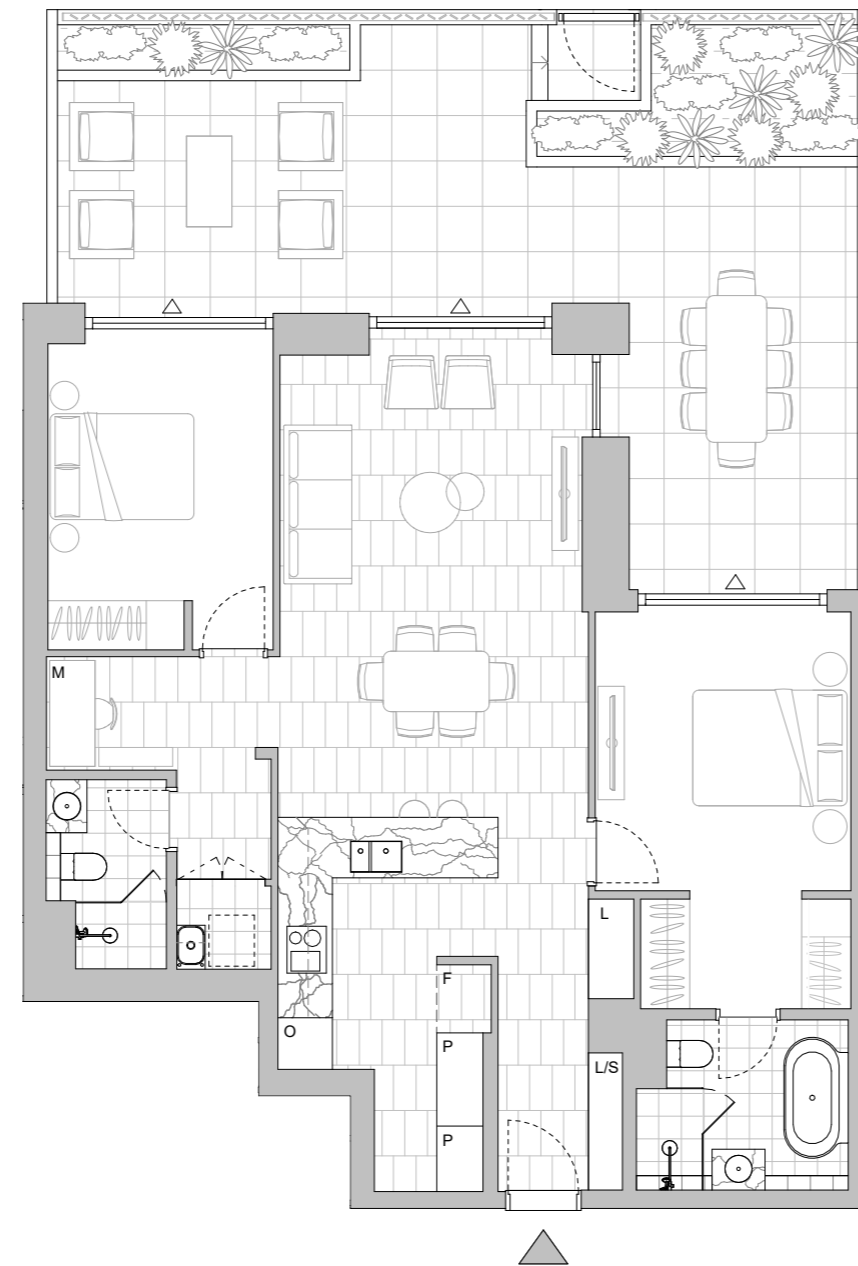


#### LEGEND - As Applicable

- |                |                      |                    |
|----------------|----------------------|--------------------|
| Access         | Balcony Access       | ** Vertical Screen |
| F Fridge Space | IF Integrated Fridge | SL Skylight        |
| P Pantry       | S Storage            | SY Study           |
| O Oven Stack   | L Linen              |                    |
| M Media        | K King Bed           |                    |



This floor plan was produced prior to construction and while the information contained herein is believed to be correct it is not guaranteed. Changes will undoubtedly be made in accordance with the contract for sale. The plan does not show additional features such as hot water systems, services or bulkheads necessary for services. Dimensions, areas and scale of floor plans are approximate only. Dimensions are measured, and areas are calculated, in accordance with the Australian Property Institute Method of Measurement effective at the date of preparation of the Floor Plan. The furniture and furnishings depicted are not included with any sale. Purchasers must refer to the contract for sale for the list of inclusions. Furnishings should not be taken to indicate the final position of power points, TV connection points and the like. Bed sizes shown are indicative only and not guaranteed. All graphics, including design and extent of tile/paver/carpet areas, landscaping, balustrades, louvres, sun shading, fencing, privacy screens, services equipment and wintergardens are for illustrative purposes only and are not to be relied on as a representative of the final product. All level changes in the courtyards may not be shown.



LEVEL 1

# HIGH FOREST

by mirvac

## APARTMENTS

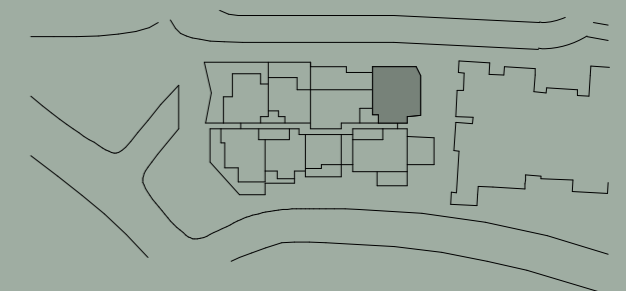
Apartment No. 105  
 Building IRONBARK  
 Lot No. 08

Colour Scheme  
 SUMMER

### 2 BEDROOM APARTMENT

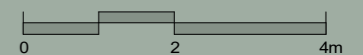
Internal Area 83 m<sup>2</sup>  
 Balcony Area 83 m<sup>2</sup>  
 Total Area 166 m<sup>2</sup>

Areas subject to change in accordance with the provisions of the contract. Area includes balcony and/or terrace where applicable. It excludes associated parking and external storage areas.

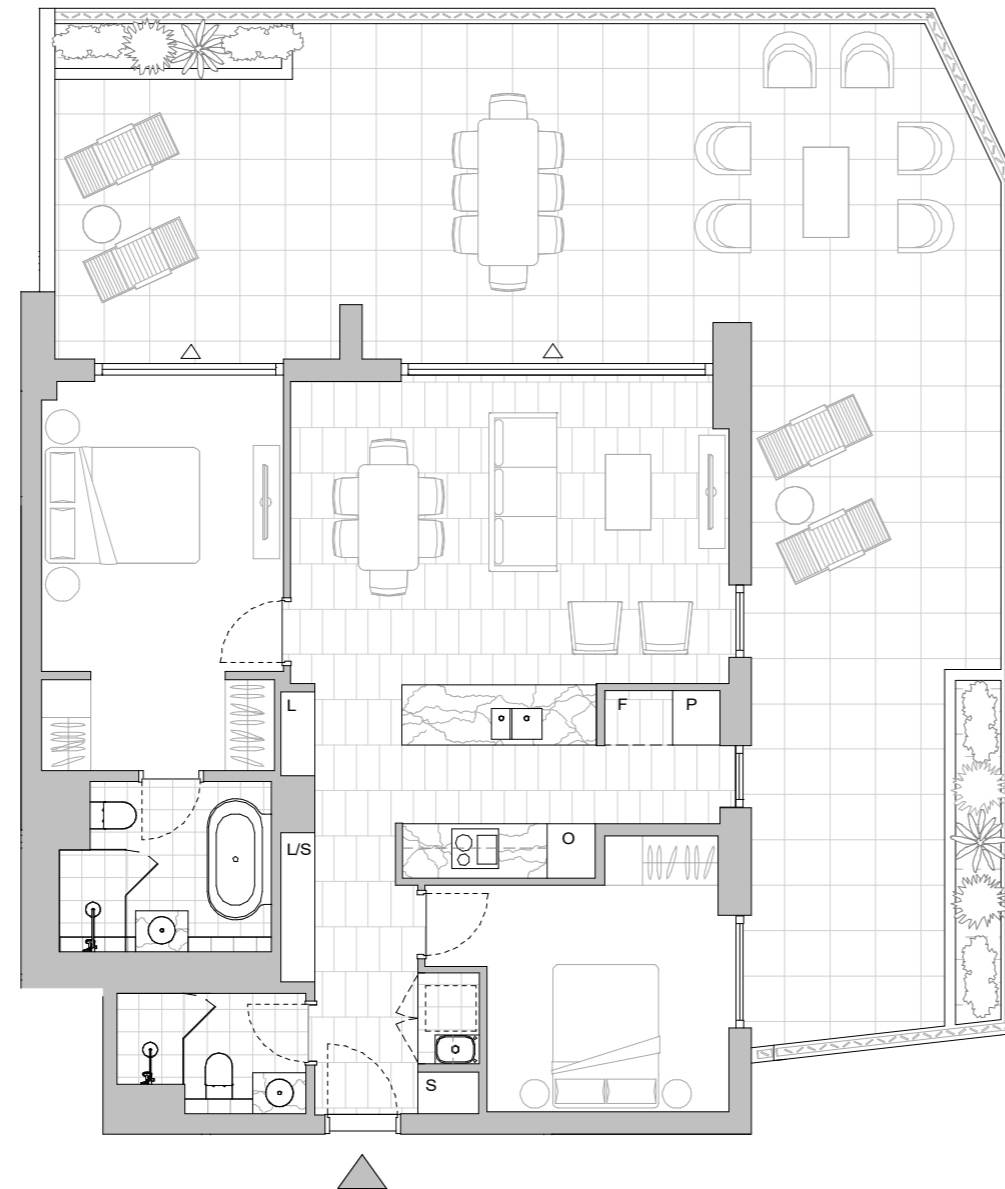


#### LEGEND - As Applicable

▲ Access	△ Balcony Access	** Vertical Screen
F Fridge Space	IF Integrated Fridge	SL Skylight
P Pantry	S Storage	SY Study
O Oven Stack	L Linen	
M Media	K King Bed	



This floor plan was produced prior to construction and while the information contained herein is believed to be correct it is not guaranteed. Changes will undoubtedly be made in accordance with the contract for sale. The plan does not show additional features such as hot water systems, services or bulkheads necessary for services. Dimensions, areas and scale of floor plans are approximate only. Dimensions are measured, and areas are calculated, in accordance with the Australian Property Institute Method of Measurement effective at the date of preparation of the Floor Plan. The furniture and furnishings depicted are not included with any sale. Purchasers must refer to the contract for sale for the list of inclusions. Furnishings should not be taken to indicate the final position of power points, TV connection points and the like. Bed sizes shown are indicative only and not guaranteed. All graphics, including design and extent of tile/paver/carpet areas, landscaping, balustrades, louvres, sun shading, fencing, privacy screens, services equipment and wintergardens are for illustrative purposes only and are not to be relied on as a representative of the final product. All level changes in the courtyards may not be shown.



LEVEL 1

# HIGH FOREST

by mirvac

## APARTMENTS

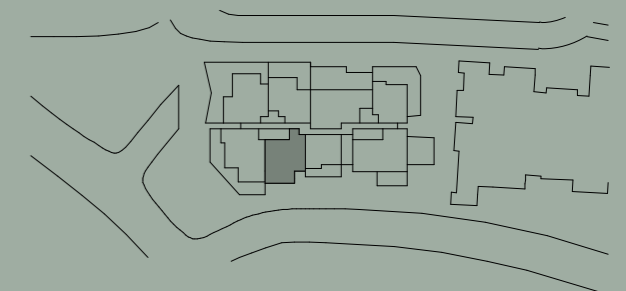
Apartment No. 108  
 Building IRONBARK  
 Lot No. 11

Colour Scheme  
 AUTUMN

### 2 BEDROOM + MEDIA APARTMENT

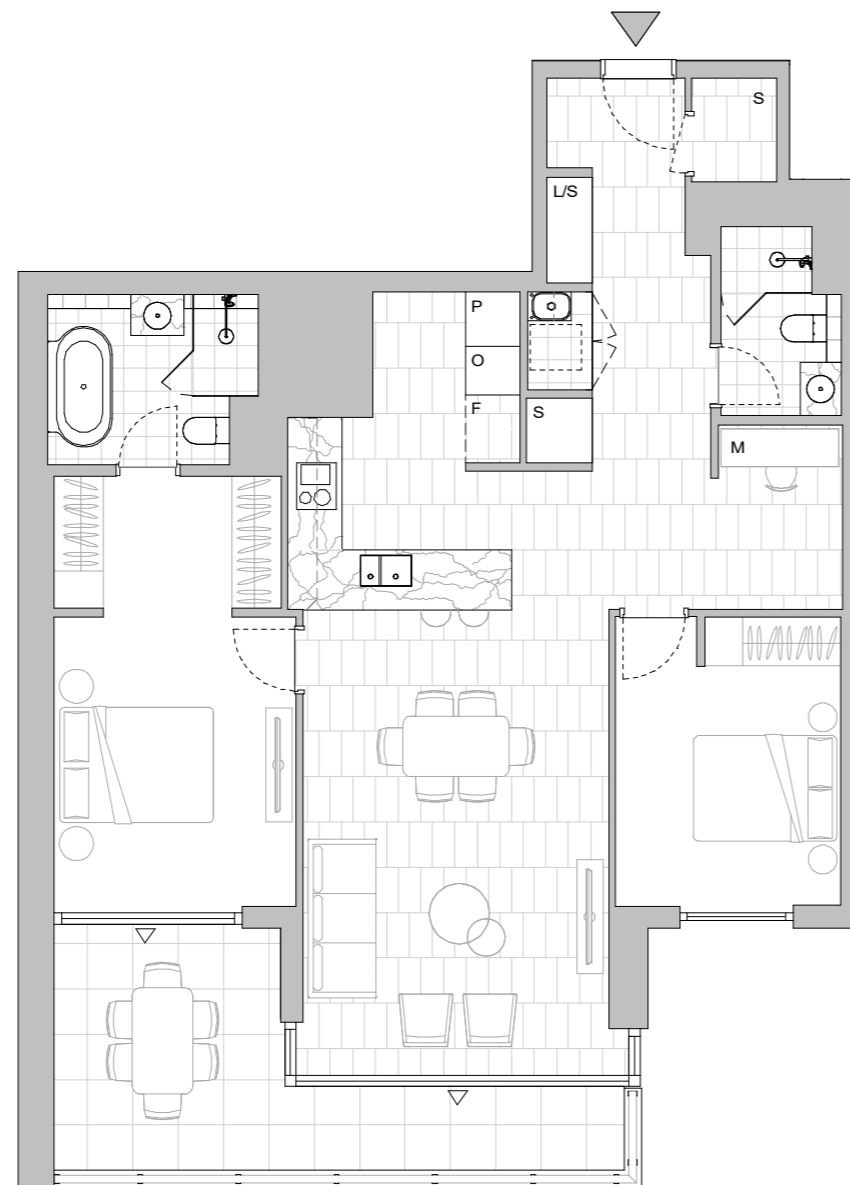
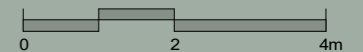
Internal Area 98 m<sup>2</sup>  
 Balcony Area 15 m<sup>2</sup>  
 Total Area 113 m<sup>2</sup>

Areas subject to change in accordance with the provisions of the contract. Area includes balcony and/or terrace where applicable. It excludes associated parking and external storage areas.



#### LEGEND - As Applicable

- |                |                      |                    |
|----------------|----------------------|--------------------|
| ▲ Access       | △ Balcony Access     | ** Vertical Screen |
| F Fridge Space | IF Integrated Fridge | SL Skylight        |
| P Pantry       | S Storage            | SY Study           |
| O Oven Stack   | L Linen              |                    |
| M Media        | K King Bed           |                    |



LEVEL 1

This floor plan was produced prior to construction and while the information contained herein is believed to be correct it is not guaranteed. Changes will undoubtedly be made in accordance with the contract for sale. The plan does not show additional features such as hot water systems, services or bulkheads necessary for services. Dimensions, areas and scale of floor plans are approximate only. Dimensions are measured, and areas are calculated, in accordance with the Australian Property Institute Method of Measurement effective at the date of preparation of the Floor Plan. The furniture and furnishings depicted are not included with any sale. Purchasers must refer to the contract for sale for the list of inclusions. Furnishings should not be taken to indicate the final position of power points, TV connection points and the like. Bed sizes shown are indicative only and not guaranteed. All graphics, including design and extent of tile/paver/carpet areas, landscaping, balustrades, louvres, sun shading, fencing, privacy screens, services equipment and wintergardens are for illustrative purposes only and are not to be relied on as a representative of the final product. All level changes in the courtyards may not be shown.

# HIGH FOREST

## APARTMENTS

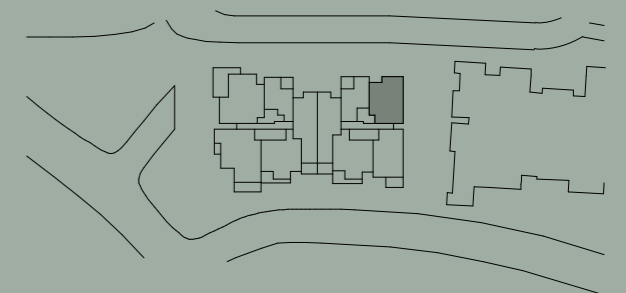
Apartment No. 309 Building IRONBARK Lot No. 30

Colour Scheme AUTUMN

### 2 BEDROOM APARTMENT

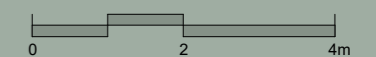
Internal Area 83 m<sup>2</sup>  
Balcony Area 10 m<sup>2</sup>  
Total Area 93 m<sup>2</sup>

Areas subject to change in accordance with the provisions of the contract. Area includes balcony and/or terrace where applicable. It excludes associated parking and external storage areas.

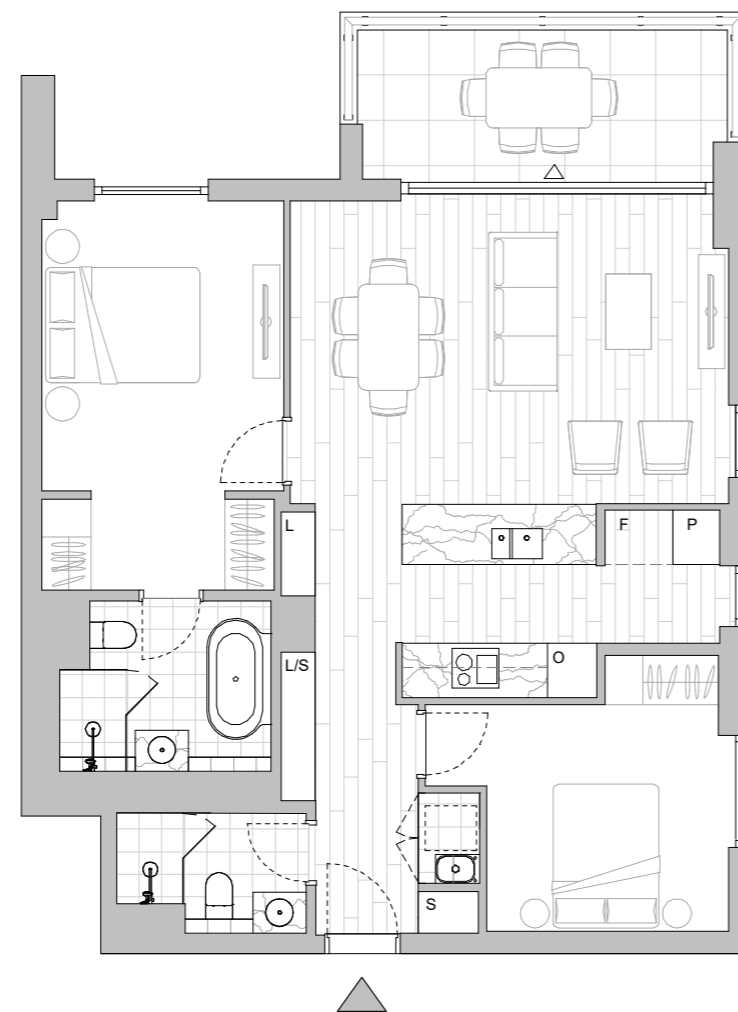


#### LEGEND - As Applicable

- |                |                      |                    |
|----------------|----------------------|--------------------|
| Access         | Balcony Access       | ** Vertical Screen |
| F Fridge Space | IF Integrated Fridge | SL Skylight        |
| P Pantry       | S Storage            | SY Study           |
| O Oven Stack   | L Linen              |                    |
| M Media        | K King Bed           |                    |



This floor plan was produced prior to construction and while the information contained herein is believed to be correct it is not guaranteed. Changes will undoubtedly be made in accordance with the contract for sale. The plan does not show additional features such as hot water systems, services or bulkheads necessary for services. Dimensions, areas and scale of floor plans are approximate only. Dimensions are measured, and areas are calculated, in accordance with the Australian Property Institute Method of Measurement effective at the date of preparation of the Floor Plan. The furniture and furnishings depicted are not included with any sale. Purchasers must refer to the contract for sale for the list of inclusions. Furnishings should not be taken to indicate the final position of power points, TV connection points and the like. Bed sizes shown are indicative only and not guaranteed. All graphics, including design and extent of tile/paver/carpet areas, landscaping, balustrades, louvres, sun shading, fencing, privacy screens, services equipment and wintergardens are for illustrative purposes only and are not to be relied on as a representative of the final product. All level changes in the courtyards may not be shown.



LEVEL 3

# HIGHFOREST

## APARTMENTS

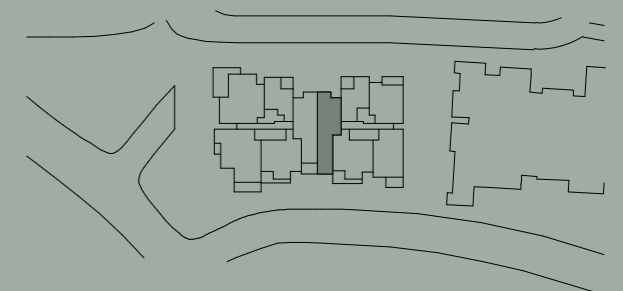
Apartment No. 407 Building IRONBARK Lot No. 38

Colour Scheme  
AUTUMN

### 2 BEDROOM APARTMENT

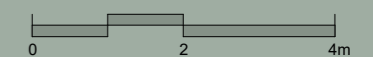
Internal Area 93 m<sup>2</sup>  
Balcony Area 10 m<sup>2</sup>  
Total Area 103 m<sup>2</sup>

Areas subject to change in accordance with the provisions of the contract. Area includes balcony and/or terrace where applicable. It excludes associated parking and external storage areas.

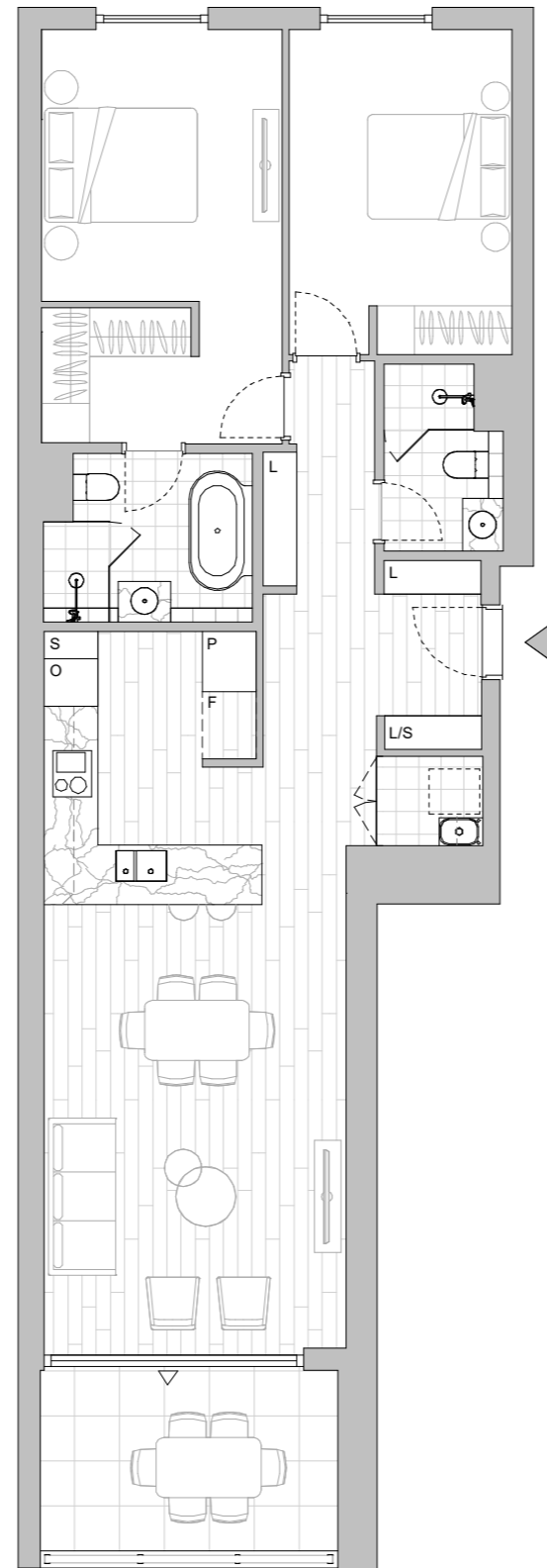


#### LEGEND - As Applicable

- |                |                      |                    |
|----------------|----------------------|--------------------|
| Access         | Balcony Access       | ** Vertical Screen |
| F Fridge Space | IF Integrated Fridge | SL Skylight        |
| P Pantry       | S Storage            | SY Study           |
| O Oven Stack   | L Linen              |                    |
| M Media        | K King Bed           |                    |



This floor plan was produced prior to construction and while the information contained herein is believed to be correct it is not guaranteed. Changes will undoubtedly be made in accordance with the contract for sale. The plan does not show additional features such as hot water systems, services or bulkheads necessary for services. Dimensions, areas and scale of floor plans are approximate only. Dimensions are measured, and areas are calculated, in accordance with the Australian Property Institute Method of Measurement effective at the date of preparation of the Floor Plan. The furniture and furnishings depicted are not included with any sale. Purchasers must refer to the contract for sale for the list of inclusions. Furnishings should not be taken to indicate the final position of power points, TV connection points and the like. Bed sizes shown are indicative only and not guaranteed. All graphics, including design and extent of tile/paver/carpet areas, landscaping, balustrades, louvres, sun shading, fencing, privacy screens, services equipment and wintergardens are for illustrative purposes only and are not to be relied on as a representative of the final product. All level changes in the courtyards may not be shown.



LEVEL 4