

OLIVINE

LANDSCAPE
PACKAGES



To welcome our residents in style, each home purchased includes a complimentary front garden package.



Four wonderful garden palettes and four design layouts are yours for choosing, ranging from:

1. RESILIENT
2. NATIVE
3. KITCHEN
4. CONTEMPORARY

Select the front garden package that best suits you, and help create a visually consistent streetscape you can be proud of.



Booking your landscaping

Follow these 3 simple steps to book in your landscaping.

1. COMPLETE THE REQUIRED FORMS

Fill out your Covenant & Landscape Request Checklist and locate a copy of your Occupancy Permit.

2. TAKE REQUIRED PHOTOS

Provide clear photos of the front facade showing the driveway crossover, external lights, letterbox, side gate, fences, clothesline, front door, front porch flooring and irrigation pre-works.

See the examples below for reference on how to capture the required images.



3. SUBMIT YOUR DOCUMENTS

Email the completed checklist, photos, and occupancy permit to viccustomer@mirvac.com. Once we confirm everything meets the design guidelines, we'll schedule in your landscaping work!



Covenant & Landscape Request Checklist

LOT NO. _____ **LOT ADDRESS** _____

OWNER'S NAME _____

CONTACT NO. _____

SETTLEMENT DATE / / 20

CONSTRUCTION COMMENCEMENT DATE / / 20

CONSTRUCTION COMPLETION DATE / / 20

CERTIFICATE OF OCCUPANCY DATE / / 20

I ACKNOWLEDGE THE FOLLOWING:

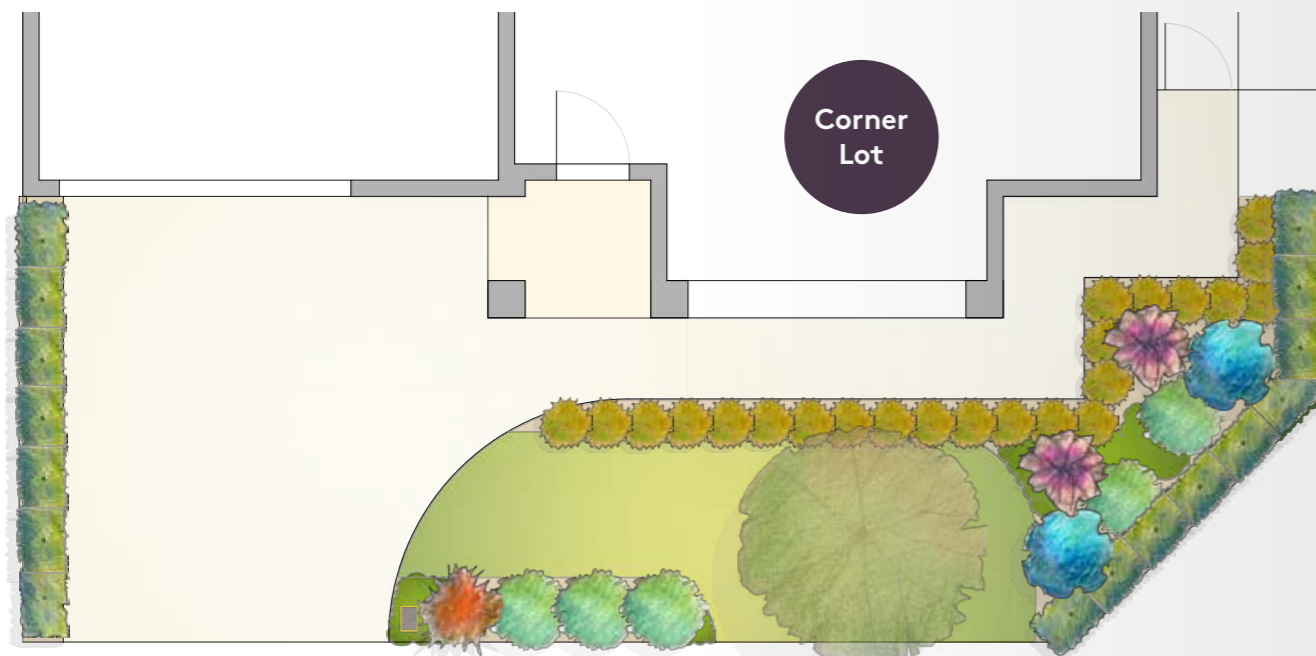
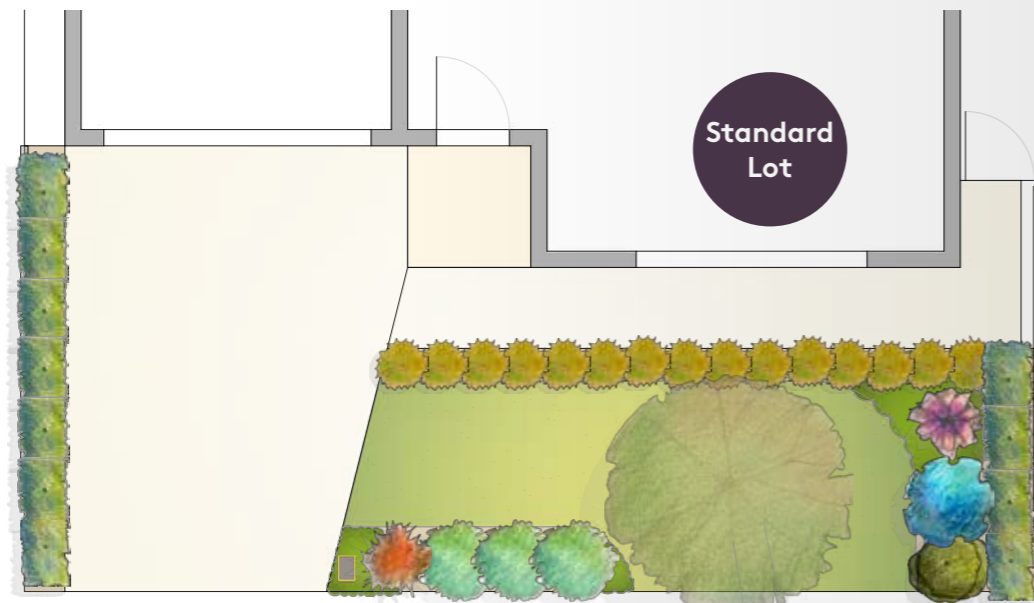
- All pre works are my responsibility and will be completed prior to handing over the front yard for Mirvac to install landscaping.
- Dwelling complies with the Olivine Design and Siting Guidelines and has been constructed in accordance with a Design Assessment approved by the Mirvac Design Review Panel.
- Any future changes/alterations to the installed front Landscaping by Mirvac is subject to approval by Mirvac in accordance with the Olivine Guidelines.
- Any retaining walls that may be required are not included in the landscaping package and are to be installed by the owner prior to works starting.
- I understand that while contractors are completing works on my lot, the site may present hazards, and I will ensure that all persons and pets remain clear of the works to avoid any risk of harm.

SIGNED (OWNER) _____ **SIGNED (OWNER)** _____

FULL NAME _____ **FULL NAME** _____

DATE / / 20 **DATE** / / 20

Design 1

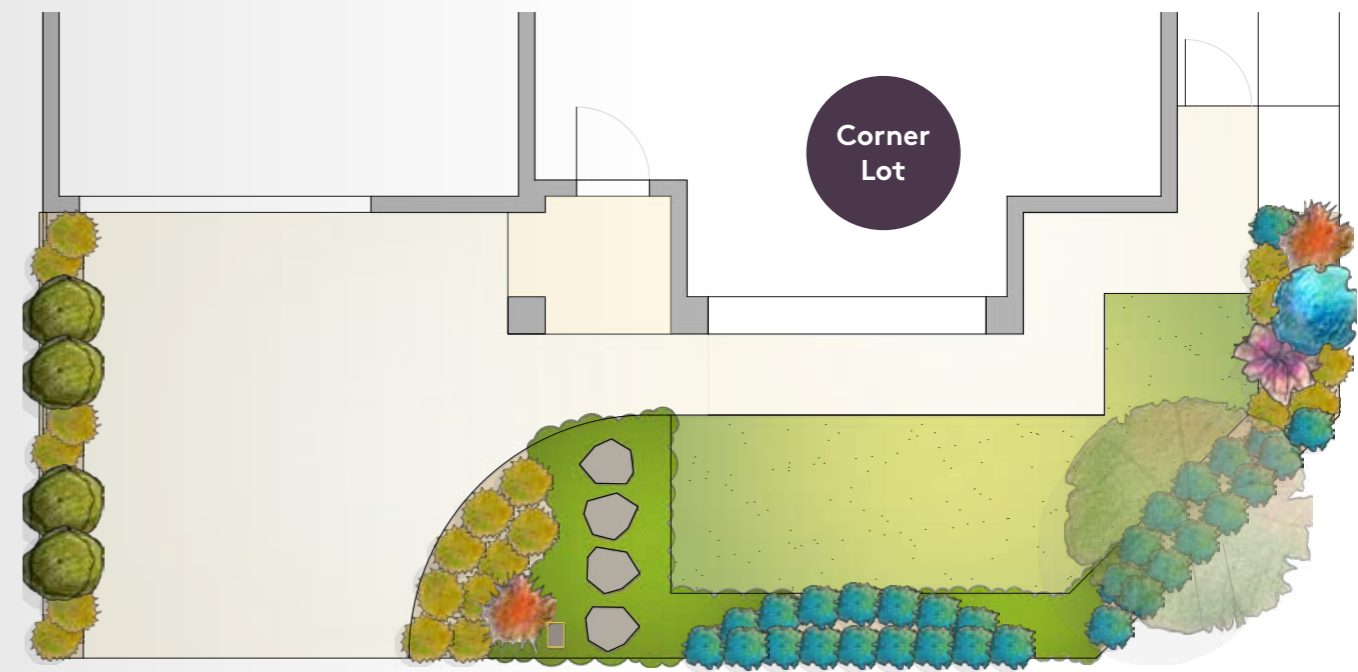
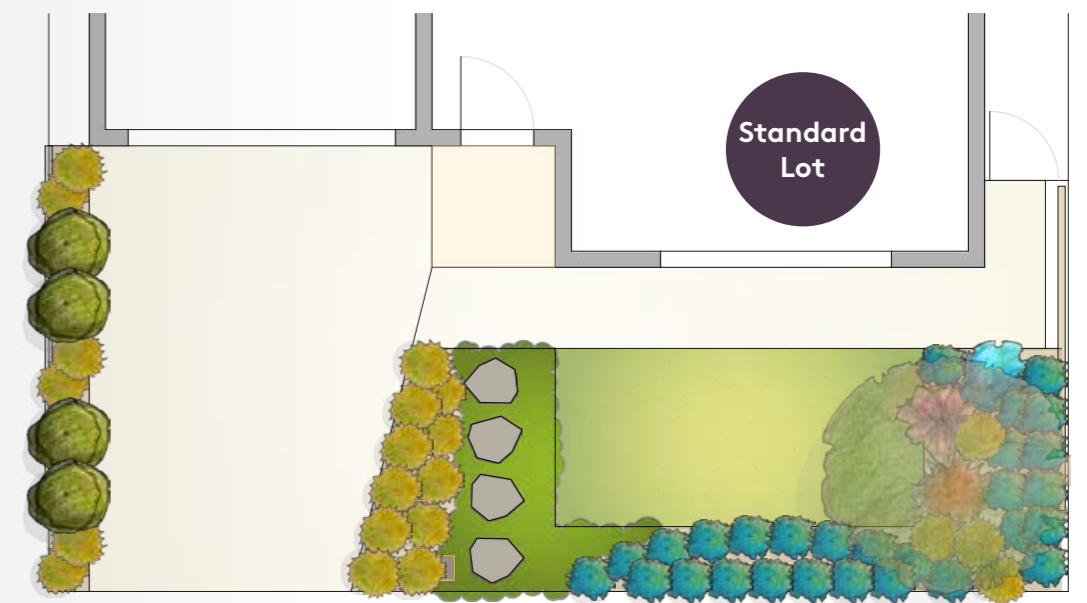


TURF (AS SHOWN)

ADDITIONAL GARDEN BED

This landscape design offers a harmonious blend of greenery and color for frontages from 12.5m to over 16m. It features layered plantings, mature trees, and vibrant shrubs that create an inviting, balanced outdoor space. The layout maximises curb appeal while providing functional lawn areas and privacy, tailored to different frontage sizes.

Design 2

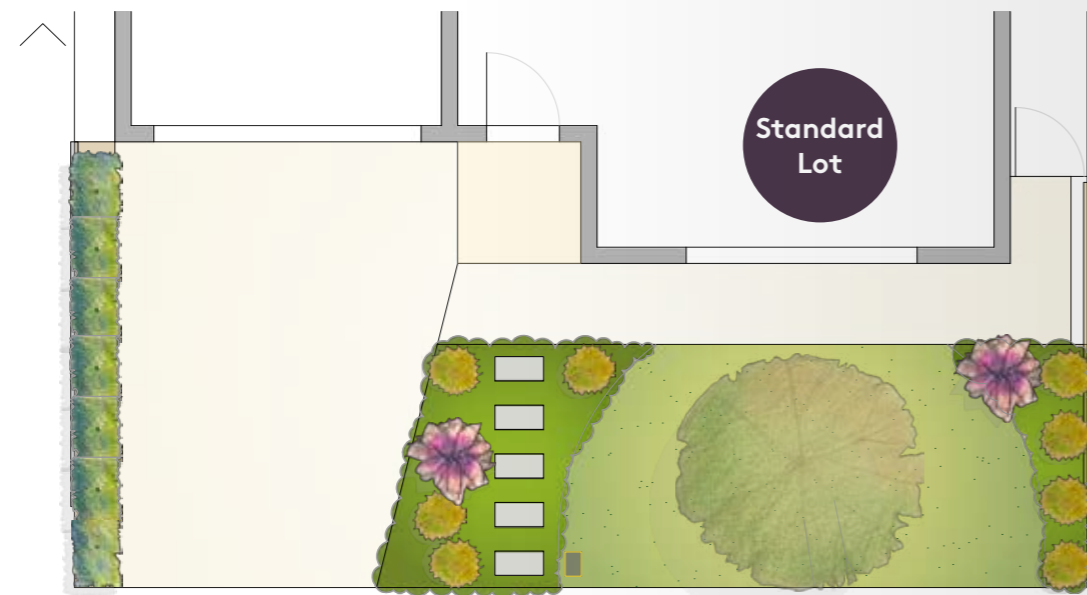


TURF (AS SHOWN)

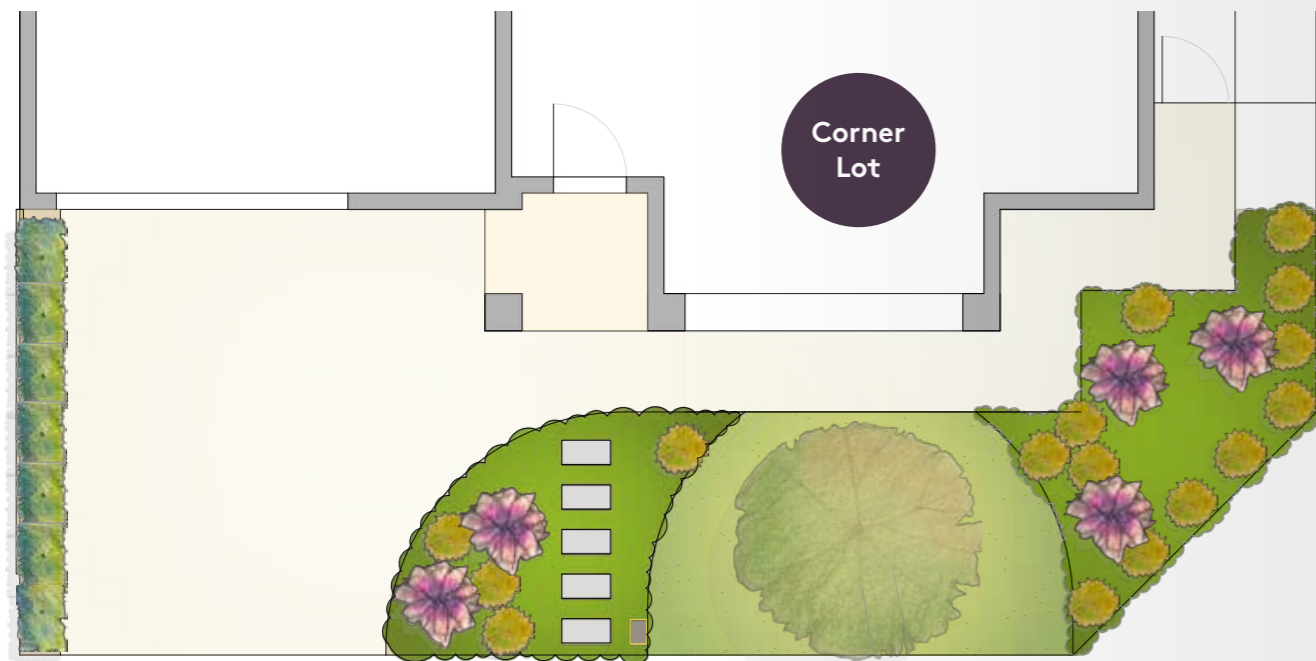
ADDITIONAL GARDEN BED

This landscape design offers a harmonious blend of greenery and color for frontages from 12.5m to over 16m. It features layered plantings, mature trees, and vibrant shrubs that create an inviting, balanced outdoor space. The layout maximises curb appeal while providing functional lawn areas and privacy, tailored to different frontage sizes.

Design 3



Standard Lot



Corner Lot

TURF (AS SHOWN)

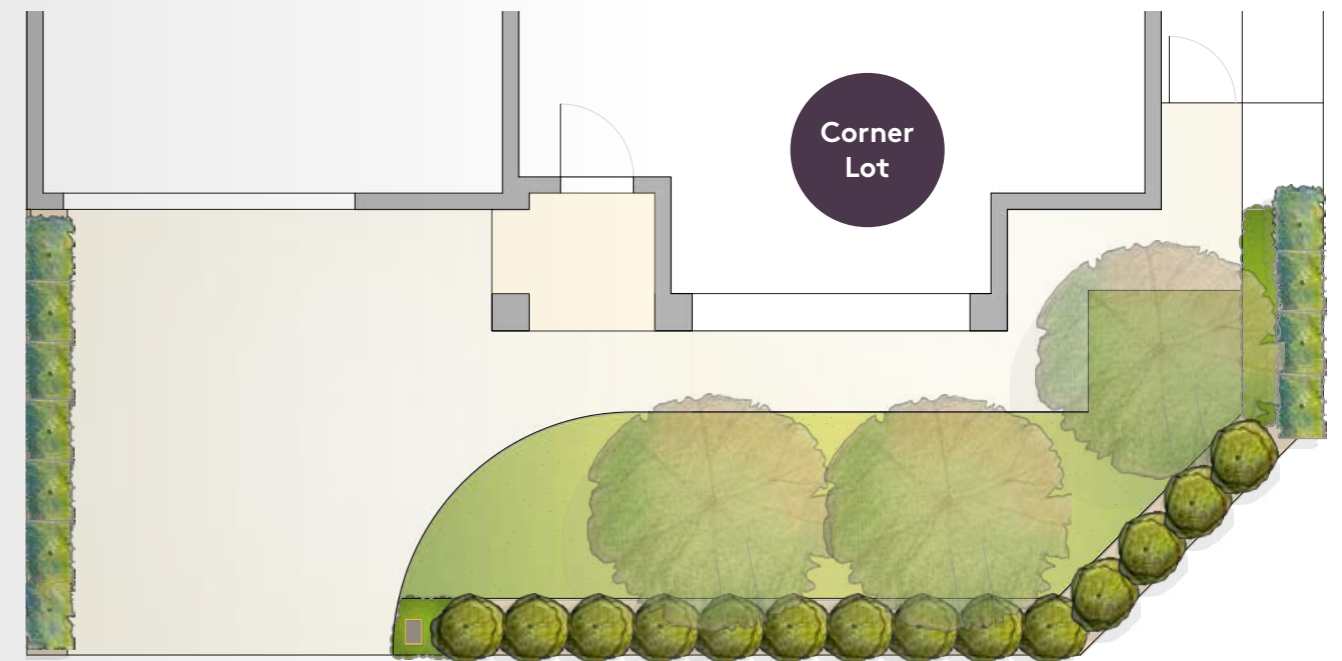
ADDITIONAL GARDEN BED

This design features clean, rectangular stepping stones integrated through lush groundcover, creating a structured yet inviting pathway. Suitable for frontages from 12.5m to over 16m, it balances formal geometry with vibrant plantings and open lawn space for a neat, contemporary garden feel.

Design 4



Standard Lot



Corner Lot

TURF (AS SHOWN)

ADDITIONAL GARDEN BED

This design emphasises simplicity and greenery with evenly spaced shrubs and mature trees, creating a clean and tranquil front garden. Suitable for frontages from 12.5m to over 16m, it offers open lawn areas framed by structured plantings for a balanced, peaceful outdoor space.

Which planting palette?

Please choose one of the four planting palettes below for your landscaping. Selecting a landscaping palette will help guide the style and plant choices for your garden.

RESILIENT GARDEN Best for: Low maintenance lifestyles, full sun sites, and homes where durability is key



Blue Chalkstick



Munstead Lavender



Coral Jade



Dwarf Bottlebrush



Bird of Paradise



New Zealand Flax



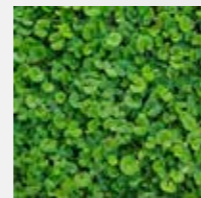
Emerald Arch Flax Lily



Stone Crop



Outback Orange Aloe



Kidney Weed

NATIVE GARDEN Best for: A relaxed, natural look and supporting local ecology



Dwarf Hardenbergia



Low Coastal Rosemary



Mini Snow in Summer



Red Rocket Bottlebrush



Swamp Foxtail Grass



Fluro Burst Bottlebrush



Spear Lily



Tanika Lomandra



Purple Fan Flower



Silver Falls Kidney Weed

KITCHEN GARDEN Best for: Gardeners who enjoy practical planting and edible produce



Sprawling Rosemary



Chilli



Dwarf Pomegranate



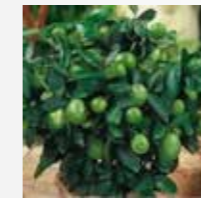
Pineapple Sage



Purple Sage



Buzz Mini Butterfly Bush



Dwarf Patio Lime



Ornamental Onion



Golden Oregano



White Creeping Thyme

CONTEMPORARY GARDEN Best for: Clean architecture, modern façades and structured streetscapes



Wormwood



White Hebe



Indian Hawthorn



Japanese Bamboo



Silver Plectranthus



Mexican Sage



Graceful Maiden Grass



Big Blue Turf Lily



Native Violet



Creeping Boobialla

The information contained on this flyer is believed to be correct but is not guaranteed. Landscaping packages stated are as intended at the date of the publication of this list and are subject to change or substitution in accordance with the contract for sale. Note: the species shown here are indicative only of the plants that will be provided. Mirvac reserves the right to substitute species that will fulfil the same functional design. Layouts will be amended to suit individual lot widths and may be amended to accommodate existing services.

Tree selection

Each of the front garden packages includes a feature tree. You may select your own preferred tree to complement your home and garden package.

DECIDUOUS TREES



Eastern Red Bud



White Crepe Myrtle



Weeping Mulberry



Crab Apple

EVERGREEN TREES



Imperial Mandarin



Dwarf Evergreen Magnolia



Tolly's Olive Tree



'Luscious' Kanooka

The information contained on this flyer is believed to be correct but is not guaranteed. Landscaping packages stated are as intended at the date of the publication of this list and are subject to change or substitution in accordance with the contract for sale. Note: the species shown here are indicative only of the plants that will be provided. Mirvac reserves the right to substitute species that will fulfil the same functional design. Layouts will be amended to suit individual lot widths and may be amended to accommodate existing services.

Next steps

NOW WHAT?

Once we've received your photos and confirmed everything meets the attached Olivine Design Guidelines, we'll schedule the landscaping work.

HERE'S WHAT TO EXPECT

- Landscaping installation typically takes 10-12 weeks once your property is booked.
- The front garden package doesn't include a path, so if you'd like one, be sure to have it installed before hand.
- Any retaining walls or steps required must be completed in line with the Design Guidelines before we begin. These are the homeowner's responsibility.

PREPARING YOUR FRONT YARD

- Ensure the yard is clean and tidy, with no debris, weeds, or vegetation.
- Rear side and return fencing as well as driveway and letterbox must be completed prior to landscaping being installed.
- The ground should be level and 100mm below adjacent surfaces (like the driveway, footpath, or porch) to allow for topsoil.
- Front gardens must also be graded to avoid water runoff onto neighbouring properties.
- A 90mm PVC pipe or similar is required to be installed under the driveway setback at a minimum of one (1) metre from the boundary.
- Ensure there is clear access to areas in which works will be undertaken.

If you have any questions or need assistance, we're here to help.
Please don't hesitate to contact us via +61 9695 9480 or viccustomer@mirvac.com

We can't wait to see your new front yard!

Turf vs Additional garden bed

WHAT'S THE DIFFERENCE?

Sequis nullores culparu pidebitis es re, sim int eostiume dolorepernam voluptatibus dolorer ferio-oreped maio doluptam que ni od ullorae num fugit ipsam et molorum custemporia natio diores

OPT FOR TURF IF:

- You'd like a simple, open green space at the front of your home.
- Low visual clutter and ease of use are priorities.
- You prefer a traditional front yard feel with minimal planting detail.
- Turf provides immediate greenery and a clean, open appearance, while remaining simple to maintain with regular mowing.

OPT FOR NO (ADDITIONAL GARDEN BED) TURF IF:

- You prefer a more landscaped, garden-focused frontage.
- You want reduced mowing and watering over time.

You enjoy layered planting and a more textured streetscape.

Choosing additional garden beds increases planting density, enhances biodiversity and often reduces long-term maintenance by minimising lawn areas.

Tip: No-turf options are particularly well suited to contemporary or resilient palettes and homes with strong architectural forms.

Landscape FAQs

AM I ELIGIBLE FOR THE LANDSCAPE PACKAGE?

All purchasers at Olivine are eligible to claim their Front Lot Landscaping Package, provided they meet their contractual obligations and comply with the Olivine Design Guidelines.

WHEN DO I APPLY FOR THE LANDSCAPE PACKAGE?

You will need to complete the Landscape Request Form when you submit your Design Assessment Application Form. The application form can be found in the latest Olivine Design Guidelines at olivine.mirvac.com or the Olivine Design Portal at portal.olivine.mirvac.com

DO WE NEED TO PROVIDE OUR CERTIFICATE OF OCCUPANCY?

Yes, a copy of your certificate of occupancy will need to be supplied prior to landscape works commencing. Mirvac Design Review Panel will undertake an external inspection of your home to ensure your home has been built to the approved plans prior to landscape works commencing. In the event your dwelling has not been approved, rectification of non-compliance items will need to be completed prior to commencing landscape works.

CAN WE VARY OR CHANGE OUR LANDSCAPE PACKAGE?

No, the packages cannot be varied. However our new residents are most welcome to add their own touch to their front garden after landscape works have been completed.

WHEN WILL MIRVAC DELIVER MY FRONT GARDEN?

Once Mirvac have confirmed your eligibility, it is anticipated front gardens will commence works within 3 months. Timeframes will be subject to prevailing seasonal conditions and contractor availability.

DO I NEED A RETAINING WALL?

Depending on the difference between the floor level of your home and the adjacent street a retaining wall may be required to create a level platform around your lot. If this is the case the location, height and materiality will need to be submitted to Olivine DRP for approval prior to installation and to be in accordance with the Design Guidelines.

Front gardens must be level at the time of compliance assessment ensuring there is no water runoff/dischage from the property onto your neighbours. If the grade/level is too steep then you will be required to prepare the site level prior to the front garden installation.

A path from your front door to the residential footpath must be level prior to the front garden installation. The path must be level (in a condition where there are no slip or trip hazards) for the team to install the front garden.

Please note that the Olivine Front Garden Package does not include the construction of a retaining wall and steps (if applicable, where the path from your front door to the residential footpath isn't leveled). If it is not installed, a best fit scenario will be achieved or works will have to be delayed until any level issues are resolved.

CAN I CHOOSE TO DELIVER MY OWN FRONT GARDEN?

Yes, you can choose to deliver your own front landscaping when you submit your Design Assessment Application Form. Your builder/architect will need to provide Landscape Plans as part of your Design Assessment application. Landscape works must be completed within 3 months of issue of a Certificate of Occupancy. Note that Mirvac will not provide a rebate if you decide to deliver your own front landscaping.

CAN I EXTEND MY DRIVEWAY?

No, the driveway width must match the existing crossover width at the front allotment boundary

AM I ALLOWED SYNTHETIC TURF?

No, fake, artificial turf is not compliant with estate design guidelines.

DOES THIS APPLY TO ALL VISIBLE AREAS?

Yes. Artificial turf is not permitted in front gardens or any areas visible from the street or public realm, including corner frontages.

WHY ISN'T ARTIFICIAL TURF SUPPORTED?

While artificial turf can seem appealing at first, it isn't a sustainable choice in the long term and doesn't align with Olivine's vision for a healthy, green and livable community.

Artificial turf is made from synthetic materials and does not support natural soil, plant growth or biodiversity. Unlike living landscapes, it doesn't absorb water effectively, can contribute to increased surface heat, and provides no environmental benefit to the surrounding streetscape. Once installed, it also has a limited lifespan and typically needs to be replaced entirely when it deteriorates, creating additional waste over time.

For these reasons, artificial turf is not supported under the Olivine Design Guidelines, and natural landscaping remains the preferred and compliant option for front gardens and publicly visible areas.

BUT ISN'T ARTIFICIAL TURF LOWER MAINTENANCE?

While artificial turf is often marketed as "low maintenance", it still requires regular care, including cleaning, weed control along edges, and eventual replacement once the surface degrades.

Well-designed natural landscaping including turf or planted garden beds can offer a visually softer, cooler and more durable outcome, with maintenance that is often comparable over the long term.

CAN I CHOOSE GARDEN BEDS INSTEAD OF TURF?

Yes. Opting for additional garden beds instead of turf is a great option if you prefer a more landscaped look or want to reduce mowing. Planted gardens also add texture, seasonal interest and variety to the street.

Sales Office

995 Donnybrook Rd, Donnybrook, VIC, 3064

Travelling from Hume Freeway (heading east): Turn Left at Olivine Boulevard

Travelling from Epping Rd (heading west): Turn Right at Patterson Drive

Open Monday 1pm – 5pm
Tuesday to Sunday 11am – 5pm

Sales Team

Preeti Singh – 0447 386 098
Shae Meagher – 0448 091 833

